

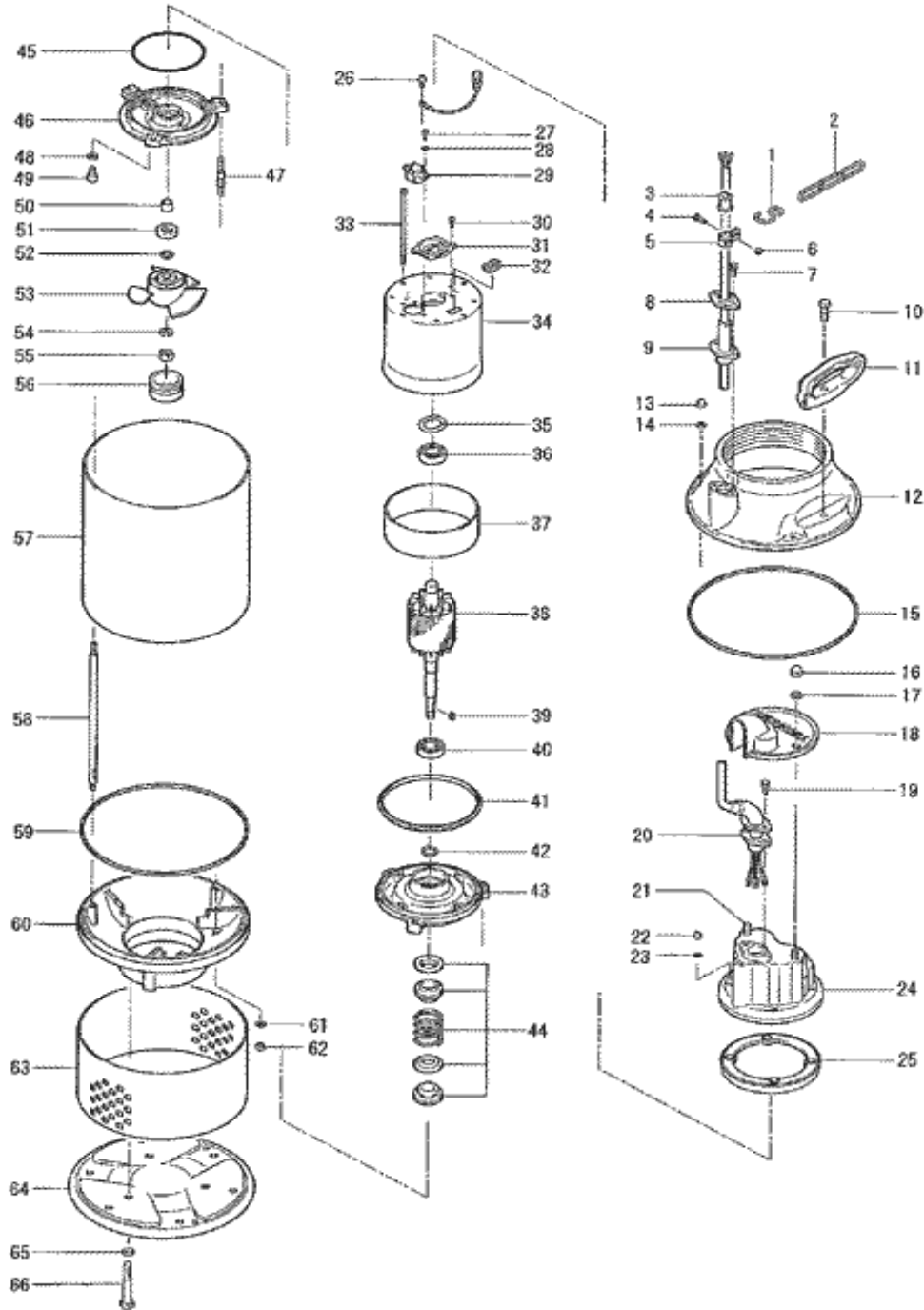
PARTS LIST		CONTRACTOR PUMPS			12/5/2012	
ITEM	PART No.	DESCRIPTION	QTY	SIZE	MATERIAL	NOTES
1	011-100-18	Shackle	1	S-8	SS	
2	095-133-10	Chain	1	d4(4-Link)	SS	
3	010-126-17	Cable Clip Rubber	1	HS2	NBR	
4	140-018-37	Hex.Bolt	1	M5x15	SWRM	
5	010-105-10	Cable Clip	1	SB	SPC	
6	141-026-15	Square Nut	1	M5	S20C	
7	140-427-17	Hex.Bolt (w/Plain Washer)	2	M5x15	SUS304	
8	003-190-10	Gland	1		SUS316	
9	002-002-11	Cable Protection Tube	1	d12.4	NR	
10	140-055-10	Hex.Bolt	2	M8x25	SUS304	
11	068-177-12	Handle	2	AB-4(SUS)	FC	
12	051-169-19	Pump Head Cover	1		FC	100AB2.75
12	051-172-15	Pump Head Cover	1		FC	125AB2.75
13	141-029-18	Hex.Cap Nut	3	M6	SUS304	
14	142-225-19	Seal Washer	3	W-6	SPC+NBR	
15	121-194-13	Packing	1	d220x3t	NBR	
16	141-030-12	Hex.Cap Nut	2	M8	SUS304	
17	142-163-18	Spring Washer	2	M8	SUS304	
18	065-162-15	Motor Head Protect. Cover	1	AB-4	FC	
19	140-427-17	Hex.Bolt (w/Plain Washer)	2	M5x15	SUS304	
20	001-004-15	Cabtyre Cable Set (10m)220V-60Hz(USA)	1	VCT4Cx1.25mm2	ABT	
21	144-308-26	Stud Bolt	2	M8x25	SUS304	
22	141-028-17	Hex.Cap Nut	4	M5	SUS304	
23	142-125-18	Plain Washer	4	M5	SUS304	
24	051-133-14	Motor Head Cover	1		ADC	
25	121-249-14	Packing	1	LB-400(E)	NBR	
26	143-085-34	Pan Screw (w/Spring Washer)	1	M4x6	C3604	
27	143-114-17	Truss Screw	2	M4x16	SWRM	
28	071-174-19	Spacer	2	d6x6lx0.5t	SPC	
30	053-272-12	Motor Protector 220V-60Hz(USA)	1	KA311-DAXL78	(T)	
30	143-124-10	Pan Screw (w/Spring Washer/Plain Washer)	2	M4x6	SWRM	
31	062-185-15	Bearing Fixing Plate	1	LB	SECC	
32	016-110-16	Lead Wire Protection Bush	1	LB-400(E)	NBR	
33	143-119-12	Pan Screw	4	M5x127	SWRM	
34		Stator	1Set			
35	142-192-16	Wave Washer	1	6201(D=32,t=0.4)	SK5	
36	052-100-15	Bearing	1	6201ZZC3		
37	071-173-18	Collar	1	32l	SECC	
38	055-674-14	Rotor	1Set	w/Bearing		
39	147-016-10	Impeller Key	1	4x4x10l	SUS403	
40	052-152-12	Bearing	1	6302ZZC3		
41	121-244-19	Packing	1	LB-400(E)	NBR	
42	061-157-15	Bearing Collar	1	d15.1xd21x1.6t	SPCC	
43	060-372-15	Bearing Housing	1		FC	



PARTS LIST		CONTRACTOR PUMPS				12/5/2012
ITEM	PART No.	DESCRIPTION	QTY	SIZE	MATERIAL	NOTES

## EXPLODED VIEW

125AB2.75-51/61 (125AB2.75-50/60)



C-00220-2