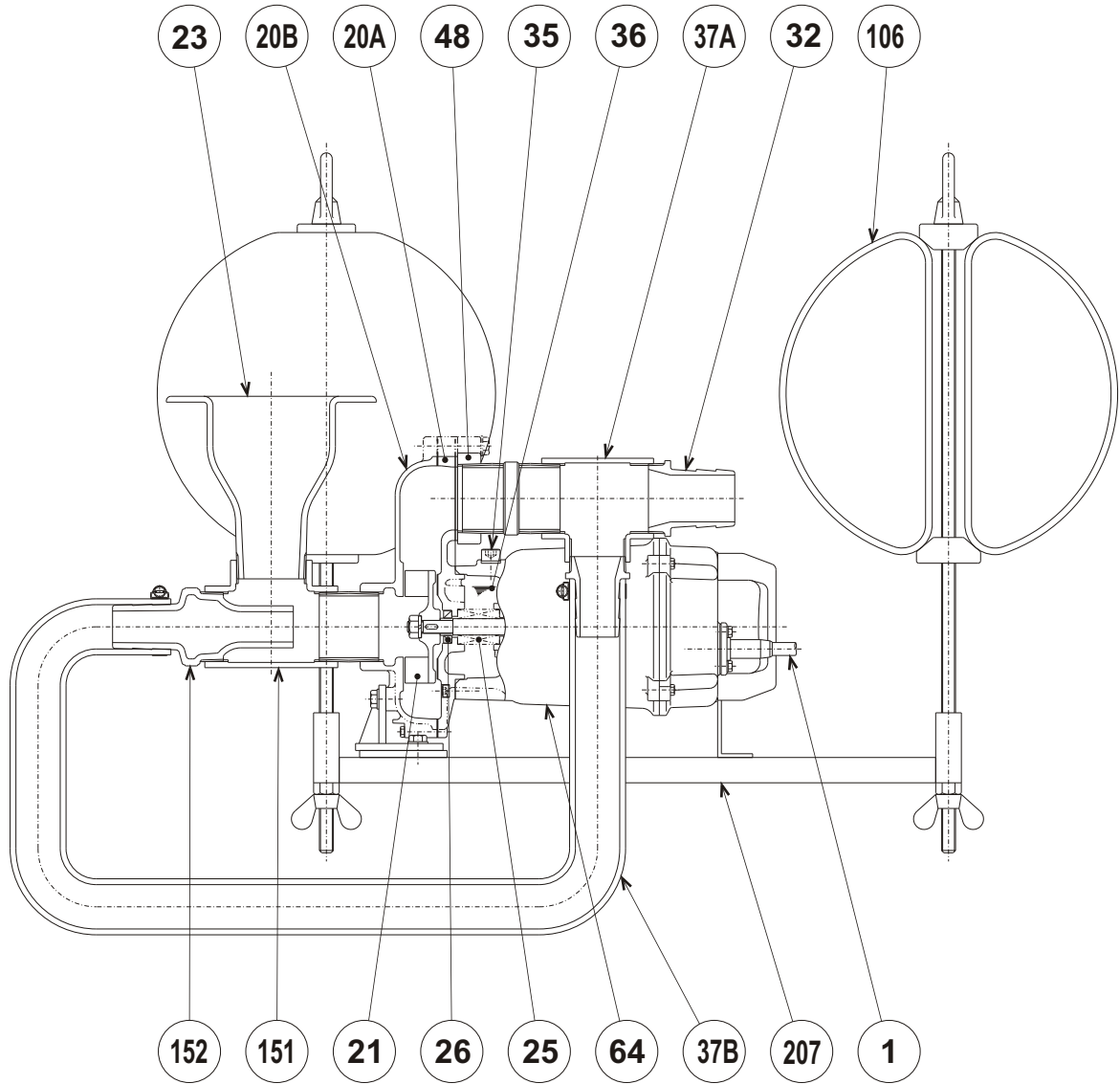




**FSP - SERIES**  
**SCUM SKIMMER PUMP**

**SECTIONAL VIEW**

**4-FSP2**



PART#	DESCRIPTION	MAIN MATERIAL / NOTE	ASTM, AISI CODE	RELATED DIN CODE	QTY
1	Power Cable	PVC Sheath AWG16/4- 32ft			1
20A	Upper Pump Casing	Cast Iron	A48M Class30B	EN 1561 GJL-200	1
20B	Lower Pump Casing	Cast Iron	A48M Class30B	EN 1561 GJL-200	1
21	Impeller	Cast Iron	A48M Class30B	EN 1561 GJL-200	1
23	Suction Opening	Resin			1
25	Mechanical Seal	Silicon Carbide / W-14HC			1
26	Oil Seal	NBR / SC-15287			1
32	Hose Coupling	Resin			1
35	Oil Plug	Stainless Steel	S 30400	1.4301	1
36	Lubricant	Turbine Oil ISO VG32 or SAE 10W-20			
37A	Discharge Pipe	Cast Iron	A48M Class30B	EN 1561 GJL-200	1
37B	Circulating Hose	Vinyl Suction Hose			1
48	Companion Flange	Resin			1
64	Motor Housing	Cast Iron	A48M Class25B	EN 1561 GJL-150	1
106	Float	Resin			3
151	Suction Casing	Cast Iron	A48M Class30B	EN 1561 GJL-200	1
152	Nozzle	Resin			1
207	Frame	Steel Pipe (& Steel)	A53 Type F (& A283 Grade D)	DIN 1615 St 33 (& EN 10025 S275)	1