

PARTS LIST		DECANTING UNIT			1/9/2013	
ITEM	PART No.	DESCRIPTION	QTY	SIZE	MATERIAL	NOTES
1	140-054-19	Hex.Bolt	2	M8x20	SUS304	
2	090-000-36	Sensor	1Set	ODS-S3		
3	072-101-21	Eye Nut	1	M12	SUS304	
4	141-007-10	Hex.Nut	1	M12	SUS304	
5	142-165-10	Spring Washer	1	M12	SUS304	
6	144-485-15	Stud Bolt	1	M12x225	SUS304	
7	127-146-18	Fittings	1	FHP-3/4(T)	SUS304	
8	106-472-11	Float Set	1	FHP-3/4(T)	Resin	
9	141-007-10	Hex.Nut	1	M12	SUS304	
10	141-005-18	Hex.Nut	4	M8	SUS304	
11	142-163-18	Spring Washer	4	M8	SUS304	
12	127-142-14	Supporter	1	FHP-3/4(T)	SUS304	
13	071-191-12	Sleeve	4	d8.5xd10.5x30l	SUS304	
14	202-035-22	Suction Opening	1	FHP-3/4(T)	SUS304	
15	122-132-16	O-Ring	1	G-105(104.4xd3.1)	NBR	
16	071-190-11	Sleeve	4	d8.5xd10.5x100l	SUS304	
17	144-484-14	Stud Bolt	4	M8x170	SUS304	
18	141-005-47	Hex.Nut	4	M8(B=12)	SUS304	
19	203-025-19	Check Valve	1	d80(Ebonite Ball)	Resin	
20	026-234-18	Oil Seal	1	VC-25405	NBR	
21	140-057-54	Hex.Bolt	2	M8x35	SUS304	
22	142-127-10	Plain Washer	2	M8	SUS304	
23	181-006-13	Hose Band	1	44mm(d40)	SUP	
24	032-164-28	Hose Coupling	1	40mm	Resin	
25	048-000-08	Screwed Flange	1	40mm(P.C.90)PT	Resin	
26	121-468-11	Packing	1	P.C.90xd45x2t	NR	
27	020-724-12	Pump Casing	1	FHP-3/4(T)	FC	
28	121-205-18	Packing	1	P.C.165xd136x0.5t	PE	
29	141-006-77	Hex.Nut	1	M10	S45C	
30	142-164-19	Spring Washer	1	M10	SUS304	
31	021-281-15	Impeller (50Hz)	1	FHP3-3T	FC	
31	021-282-16	Impeller (60Hz)	1	FHP3-3T	FC	
32	040-100-18	Impeller Shim		d11.2xd17x0.3t	SUS304	
33	026-100-14	Oil Seal	1	SC-15287	NBR	
34	071-112-19	Shaft Sleeve	1	d11xd14.8x11l	SUS430	
35	140-249-13	Hex.Socket Cap Bolt	3	M6x15	SUS304	
36	029-218-15	Oil Casing	1	3/4-NP	FC	
37	140-054-19	Hex.Bolt	3	M8x20	SUS304	
38	122-129-10	O-Ring	1	G-90(89.4xd3.1)	NBR	
39	025-000-18	Mechanical Seal	1	W-14HC	SSIC	
40	121-246-11	Packing	1	d10.3xd16x2t	PE	
41	035-124-12	Oil Plug	1	M10x15	SUS304	
42	064-312-19	Motor Frame	1		FC	
43		Stator	1Set			

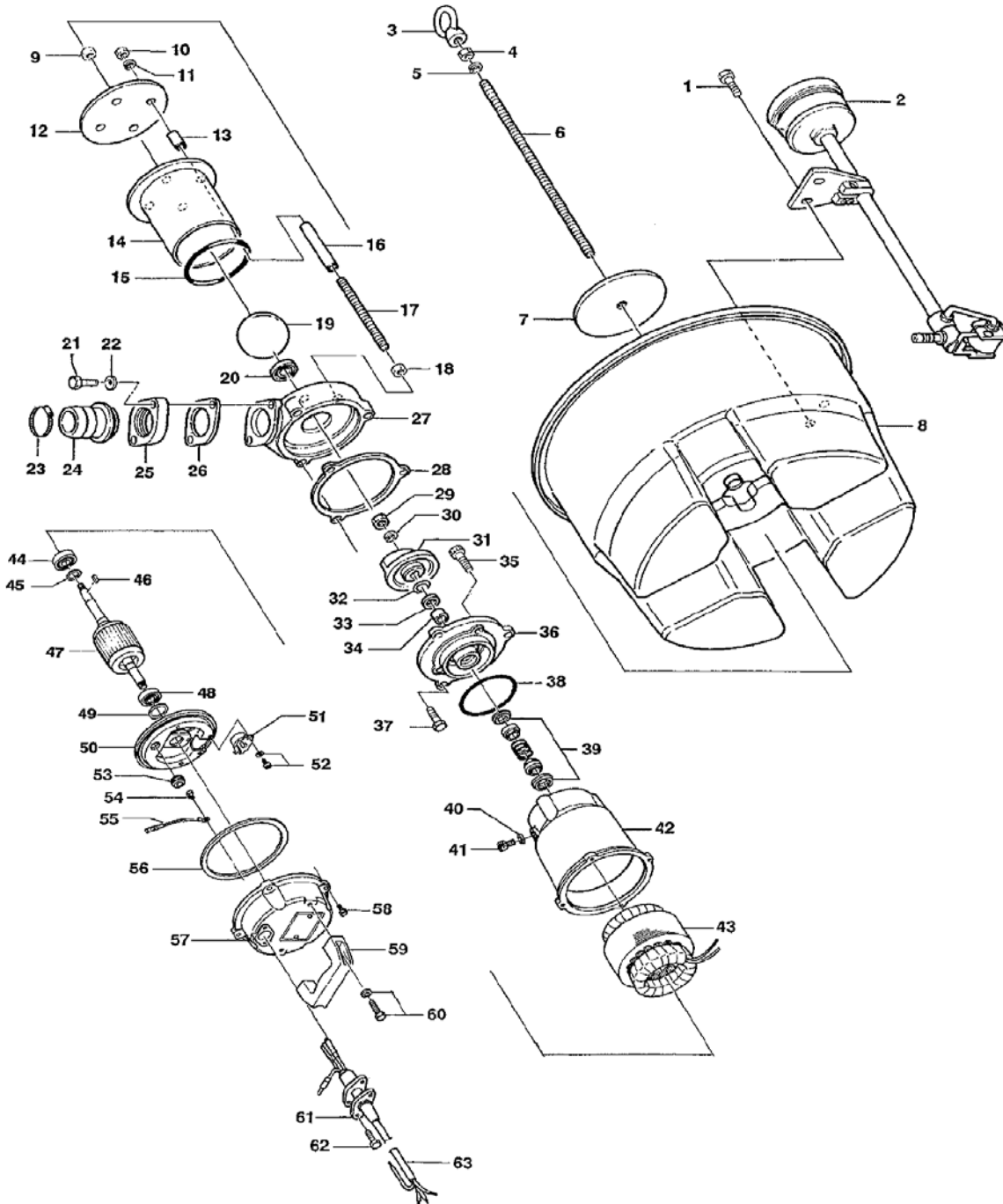
PARTS LIST		DECANTING UNIT			1/9/2013	
ITEM	PART No.	DESCRIPTION	QTY	SIZE	MATERIAL	NOTES
44	052-101-16	Bearing	1	6202ZZC3		
45	061-157-15	Bearing Collar	1	d15.1xd21x1.6t	SPCC	
46	147-016-10	Impeller Key	1	4x4x10l	SUS403	
47	055-001-76	Rotor	1Set	w/Bearing		
48	052-100-15	Bearing	1	6201ZZC3		
49	142-192-16	Wave Washer	1	6201(D=32,t=0.4)	SK5	
49-1	142-451-16	Wave Washer	1	6201(D=32,t=0.25)	SUP	
50	050-246-18	Motor Bracket	1		FC	
51		Motor Protector	1			
52	143-126-38	Pan Screw (w/Spring Washer/Plain Washer)	2	M4x12	SWRM	
53	016-100-13	Lead Wire Protection Bush	1	S-400(E)	NBR	
54	143-085-21	Pan Screw (w/Spring Washer)	1	M4x6	SWRM	
55	009-001-06	Earth Terminal	1Set	1.25mm2x80L		
56	121-252-10	Packing	1	d127.3xd144.8x3.5t	NBR	
57	051-157-14	Motor Head Cover	1		FC	
58	140-021-17	Hex.Bolt	4	M5x20	SUS304	
59	068-146-38	Handle	1	A	Resin	
60	140-000-03	Hex.Bolt (w/Plain Washer)	2	M6x25	SUS304	
61	003-190-10	Gland	1		SUS316	
62	140-427-17	Hex.Bolt (w/Plain Washer)	2	M5x15	SUS304	
63		Cabtyre Cable Set	1		LBT	
		<Packing O-Ring Set>				
	173-393-15	Packing O-Ring Set	1Set	(Marked by *)		
15	122-132-16	O-Ring (Suction Opening/P.Casing)	1	G-105(104.4xd3.1)	NBR	
26	121-468-11	Packing (Screwed Flange)	1	P.C.90xd45x2t	NR	
28	121-205-18	Packing (P.Casing/O.Casing)	1	P.C.165xd136x0.5t	PE	
38	122-129-10	O-Ring (O.Casing/M.Frame)	1	G-90(89.4xd3.1)	NBR	
40	121-246-11	Packing (Oil Plug)	1	d10.3xd16x2t	PE	
56	121-252-10	Packing (Head Cover/M.Frame)	1	d127.3xd144.8x3.5t	NBR	
		Lubricant		Turbine Oil VG32 190ml		

\* Indicates items included in set

PARTS LIST		DECANTING UNIT				1/9/2013
ITEM	PART No.	DESCRIPTION	QTY	SIZE	MATERIAL	NOTES

## EXPLODED VIEW

FHP2-3T/FHP3-3T  
FHP-4T/FHP2-4T



C-00691-1