



EXPLOADED VIEW

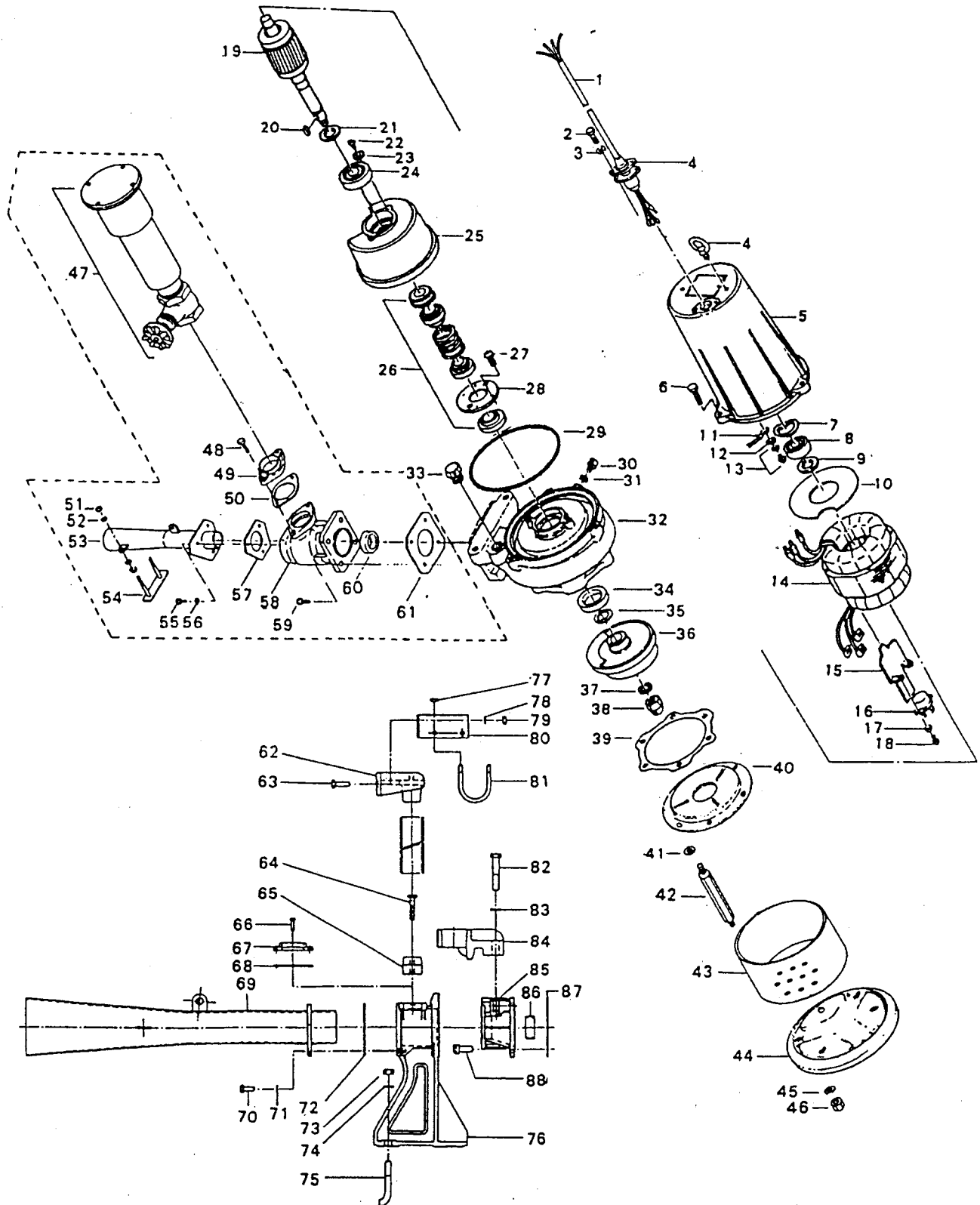
Model : 8-BER2 / TOS-8BER2

Submersible Ejector Pump

Control Number :
DREV-IBR48A-01

Supersedes :

04-01-96



PARTS PRICE LIST

8-BER2

IBR48A

Control Number : PLPA-IBR48A-01

Supersedes : -----

(04/01/96)

ITEM	PARTS NO.	DESCRIPTION	Q'TY	SIZE	MATERIAL	PRICE (\$)	NOTE
1	001-803-20	Cab-tyre Cable	1	AWG16 x 32'	VCT/LBT	96.50	
2	140-427-17	Hex. Bolt	2	M5x15L	SUS304	0.50	
3	003-100-13	Gland	1	LBT	SUS304	4.90	
4	072-105-12	Lifting Eye Bolt	2	M8	SS	4.40	
5	064-276-10	Motor Frame	1		FC	171.70	
6	140-056-11	Hex. Bolt	3	M8x30L	SUS304	0.90	
7	142-194-18	Wave Washer	1	#6203	SK-5	2.20	
8	052-102-17	Ball Bearing	1	#6203ZZC3		7.40	
9	061-152-10	Bearing Collar	1	17.1x23x1.6t	SPC	1.10	
10	058-115-11	L.Wire Prot. Bush	1	52x115x1t	Resin	7.40	
11	009-112-16	Lead Wire	1	16AWG		1.50	
12	142-124-20	Plain Washer	1	M4	SPC	0.20	
13	143-086-22	Cross Pan Screw	1	M4x8L	SWRM	0.20	
14	056-308-17	Motor Stator	1		220V	306.40	
14	056-828-18	Motor Stator	1		440V	370.00	
15	127-143-15	Fixture	1		SPC	13.00	
16	053-272-12	Motor Protector	1	KA311-DAXL78	(T)220V	116.00	
16	053-267-14	Motor Protector	1	KA311-DAXL63	(T)440V	78.60	
17	142-124-20	Plain Washer	2	M4	SPC	0.20	
18	143-016-18	Cross Pan Screw	2	M4x12L	SWRM	0.10	
19	055-337-12	Rotor and Shaft	1			267.10	
20	147-040-13	Impeller Key	1	5x5x16L	SUS	5.90	
21	061-158-16	Bearing Collar	1	20.1x28x1.6t	SPC	1.10	
22	143-028-13	Cross Pan Screw	2	M5x10L	SWRM	0.10	
23	062-187-17	Bearing Retainer	2	5.5x18x2.3t	SPC	1.50	
24	052-107-12	Ball Bearing	1	#6304ZZC3		12.30	
25	060-227-14	Bearing Housing	1		FC	50.50	
26	025-252-19	Mechanical Seal	1	H-20	SIC	196.80	
27	143-070-10	Cross Pan Screw	2	M5x6L	SWRM	0.10	
28	030-122-15	Seal Stopper	1		SPC	3.80	
29	122-072-17	O-Ring	1	P-140	NBR	*	
30	035-112-17	Oil Plug	1	M8x12L	SUS304	1.50	
31	121-248-13	Packing	1	8.2x13.5x2t	Poly.Sheet	*	
32	020-609-10	Pump Casing	1	8-BE2	FC	133.20	
33	046-107-13	Air Valve	1	PT-1/2"		16.00	
34	026-107-24	Oil Seal	1	DD-32488	NBR	5.80	
35	040-104-25	Impeller Shim	1	18.2x29x0.3t	SUS304	1.50	
36	021-721-12	Impeller	1	8-BE2(60HZ)	FC	46.80	
36	021-721-12	Impeller	1	60hz	FC	46.80	
37	142-165-10	Spring Washer	1	M12	SUS304	0.50	
38	141-118-15	Hex. Cap Nut	1	M12	SUS304	3.30	
39	120-145-16	Packing	1	112x129x0.3t	Poly.Sheet	1.80	
40	022-579-16	Suction Cover	1	8-BER2	FC	38.60	
41	142-163-10	Plain Washer	3	M8	SUS304	0.20	
42	144-116-12	Stud Bolt	3	M8 x 113	SUS403	8.90	
43	023-280-10	Strainer	1	8-BER2	SPC	20.30	
44	049-104-19	Bottom Plate	1	4-A	SPC	14.50	
45	142-127-10	Plain Washer	3	M8	SUS304	0.20	
46	141-005-18	Hex. Nut	3	M8	SUS304	0.50	
47	215-104-10	(Diffuse Set) Silencer Valve Set	1			272.30	
48	140-055-10	Hex. Bolt	2	M8 x 25	SUS304	0.80	
49	048-128-16	Screwed Flange	1	1"	FC	14.90	
50	121-151-18	Packing	1	P.C 80 x 50	CR	*	
51	141-006-19	Hex. Nut	4	M10	SUS304	1.00	
52	142-128-11	Plain Washer	4	M10	SUS304	0.30	
53	153-104-15	Diffuser	1	8-BER2	SS+SGP	335.40	
54	154-111-18	Diffuser Base	1	8/15-BER2	SS	35.40	
55	140-054-19	Hex. Bolt	3	M8 x 20	SUS304	0.80	
56	142-127-10	Plain Washer	3	M8	SUS304	0.20	
57	121-191-10	Packing	1	P.C 80 x 62	NBR	*	
58	151-103-18	Suction Casing	1	8-BER2	FC	267.00	
59	140-078-19	Hex. Bolt	4	M10 x 35	SUS304	1.80	
60	045-105-18	Nozzle Ring	1	28 x 34 x 17L	SUS304	13.20	
61	121-142-16	Packing	1	90mm	NBR	*	
62	094-103-18	(Auto Type Diffuser Set) Guide Support	1	TOS-50	FCD	39.10	

PARTS PRICE LIST

8-BER2

IBR48A

Control Number : PLPA-IBR48A-01

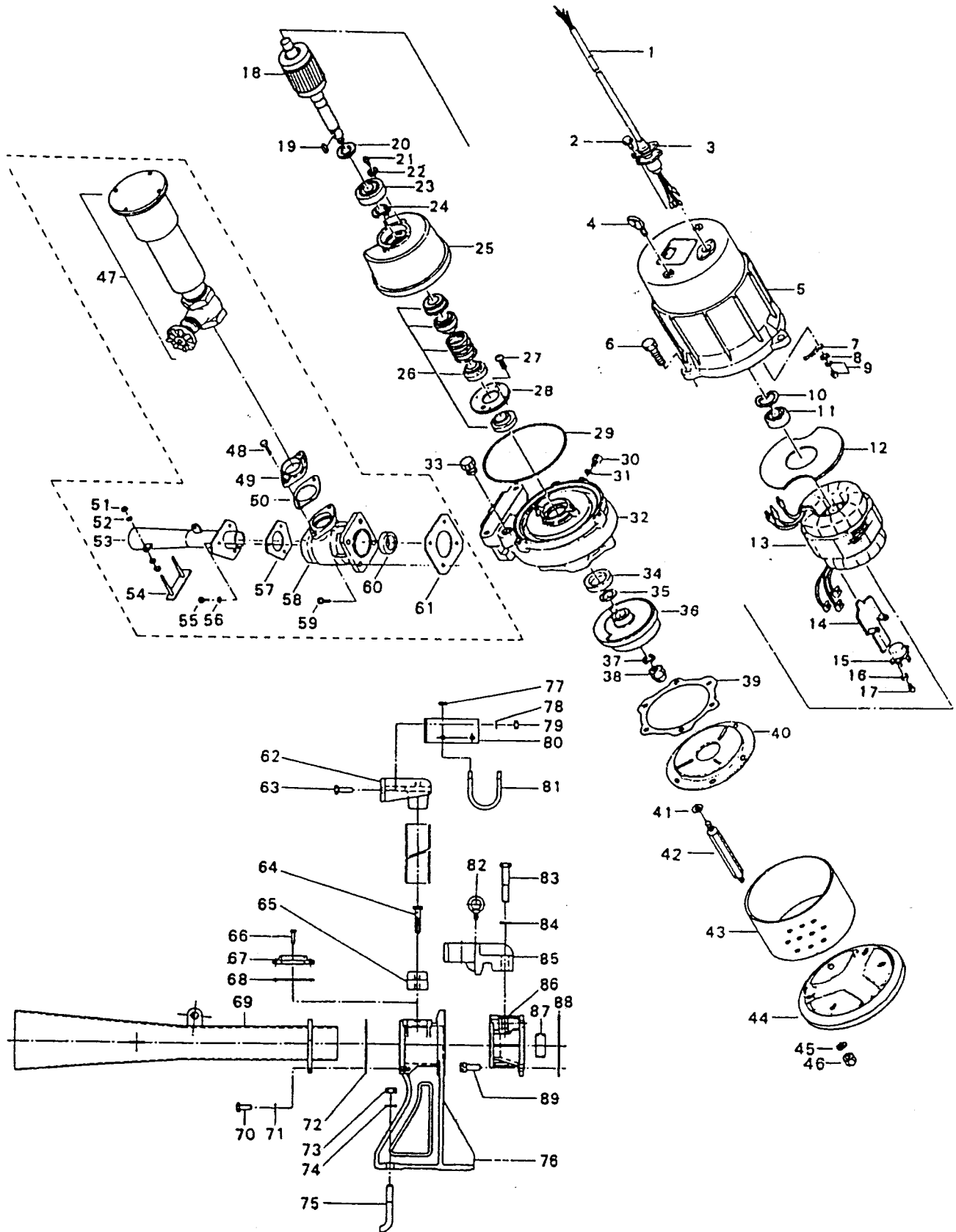
Supersedes : -----

(04/01/96)

ITEM	PARTS NO.	DESCRIPTION	Q'TY	SIZE	MATERIAL	PRICE (\$)	NOTE
63	140-079-10	Hex. Bolt	2	M10 x 40	SUS304	1.90	
64	140-079-10	Hex. Bolt	2	M10 x 40	SUS304	1.90	
65	096-100-11	Guide Connector	2	26mm	S20C	5.90	
66	140-055-10	Hex. Bolt	2	M8 x 25	SUS304	0.80	
67	048-128-16	Screwed Flange	1	1"	FC	14.90	
68	121-151-18	Packing	1	P.C 80 x 50	CR	*	
69	153-104-15	Diffuser	1	8-BER2	SS+SGP	335.40	
70	140-154-19	Hex. Bolt	3	M8 x 20	SUS304	0.80	
71	142-127-10	Plain Washer	3	M8	SUS304	0.20	
72	121-191-10	Packing	1	P.C 80 x 62	NBR	*	
		(Foundation Bolt Set)	1	(&)		6.20	
73	141-008-37	Hex. Nut	2	M16	S35C	&	
74	142-130-29	Plain Washer	2	M16	SPC	&	
75	144-167-18	Foundation Bolt	2	M16 x 120	SS	&	
76	151-104-19	Suction Casing	1	TOS-8BER2	FC	429.80	
77	141-006-19	Hex. Nut	2	M10	SUS304	1.00	
78	142-164-19	Spring Washer	1	M10	SPC	0.20	
79	141-006-19	Hex. Nut	2	M10	SUS304	1.00	
80	127-101-11	Air Inlet Pipe Support	1	TOS-8BER2	SS	8.60	
81	144-322-13	U-Bolt	1	#25,M10,B	SS	3.00	
82	140-082-16	Hex. Bolt	2	M10 x 55	SUS304	2.50	
83	142-164-19	Spring Washer	2	M10	SUS304	0.30	
84	093-108-10	Guide Hook	1	TOS-50	FCD	119.60	
85	152-105-13	Nozzle	1	Guide Rail Type	FC	242.60	
86	045-105-18	Nozzle Ring	1	28 x 34 x 17L	SUS304	13.20	
87	121-142-16	Packing	1	90mm	NBR	*	
88	140-288-14	Hex. Cap Screw	4	M10 x 35	SUS304	4.70	
	173-301-16	Packing O-ring Set	1	(*)		12.40	

* Pricing in U.S. currency, and subject to change without notice.

* Items with * prices are available only in sets.



PARTS PRICE LIST

15-BER2

IBR41A

Control Number :		PLPA-IBR41A-01		Supersedes :		-----		(04/01/96)	
ITEM	PARTS NO.	DESCRIPTION	QTY	SIZE	MATERIAL	PRICE (\$)	NOTE		
1	001-803-20	Cab-tyre Cable	1	AWG16 x 32'	VCT/LBT	96.50			
2	140-427-17	Hex. Bolt	2	M5x15L	SUS304	0.50			
3	003-152-23	Gland	1	SKJ	Resin	4.90			
4	072-105-12	Lifting Eye Bolt	2	M8	SS	4.40			
5	064-279-13	Motor Frame	1		FC	197.40			
6	140-076-17	Hex. Bolt	3	M10x30L	SUS304	1.60			
7	009-112-16	Lead Wire	1	16AWG	-	1.50			
8	142-124-20	Plain Washer	1	M4	SPC	0.20			
9	143-086-22	Cross Pan Screw	1	M4x8L	SWRM	0.20			
10	142-195-19	Wave Washer	1	#6204/6303	SK-5	2.20			
11	052-103-18	Ball Bearing	1	#6204Z2C3		8.90			
12	058-116-12	L.Wire Prot. Bush	1	60x150x1t	Resin	7.40			
13	056-300-19	Motor Stator	1		220V	309.30			
13	056-776-10	Motor Stator	1		440V	355.20			
14	127-104-14	Fixture	1		SPC	13.00			
15	053-204-26	Motor Protector	1	KA313-GCTL103	(T) 220V	63.60			
15	053-380-14	Motor Protector	1	KA313-GQVL102	(T) 440V	63.60			
16	142-124-20	Plain Washer	2	M4	SPC	0.20			
17	143-016-18	Cross Pan Screw	2	M4x12L	SWRM	0.10			
18	055-350-11	Rotor and Shaft	1			265.50			
19	147-038-18	Impeller Key	1	5x5x15.5L	SUS	5.90			
20	061-161-12	Bearing Collar	1	25.1x36x1.6t	SPC	1.60			
21	143-028-13	Cross Pan Screw	2	M5x10L	SWRM	0.10			
22	062-187-17	Bearing Retainer	2	5.5x18x2.3t	SPC	1.50			
23	052-108-13	Ball Bearing	1	#6305Z2C3		14.50			
24	146-015-16	Stop Ring	1	C25	SK-5	1.90			
25	060-231-11	Bearing Housing	1		FC	52.40			
26	025-252-19	Mechanical Seal	1	H-20A	SIC	196.80			
27	143-070-10	Cross Pan Screw	2	M5x6L	SWRM	0.10			
28	030-122-15	Seal Stopper	1		SPC	3.80			
29	122-145-12	O-Ring	1	G-170	NBR	*			
30	035-124-12	Oil Plug	1	M10x15L	SUS304	1.90			
31	121-246-11	Packing	1	10.3x16x2t	Poly.Sheet	*			
32	020-611-15	Pump Casing	1		FC	163.40			
33	046-107-13	Air Valve	1	PT-1/2"		16.00			
34	026-107-24	Oil Seal	1	DD-32488	NBR	5.80			
35	040-104-25	Impeller Shim	1	18.2x29x0.3t	SUS304	1.50			
36	021-759-19	Impeller	1	60HZ	FC	51.50			
37	142-165-10	Spring Washer	1	M12	SUS304	0.50			
38	141-118-15	Hex. Cap Nut	1	M12	SUS304	3.30			
39	120-146-17	Packing	1	136x157x0.3t	Poly.Sheet	1.80			
40	022-580-10	Suction Cover	1	15-BER2	FC	46.50			
41	142-127-10	Plain Washer	3	M8	SUS304	0.20			
42	144-116-12	Stud Bolt	3	M8x15L	SUS304	0.70			
43	023-281-11	Strainer	1	15-BER2	SPC	22.90			
44	049-153-13	Bottom Plate	1	15-BER2	SPC	20.60			
45	142-127-10	Plain Washer	3	M8	SUS304	0.20			
46	141-005-18	Hex. Nut	3	M8	SUS304	0.50			
		(Diffuser Set)							
47	215-105-11	Silenser Valve Set	1	8/15-TR		291.60			
48	140-055-10	Hex. Bolt	2	M8 x 25	SUS304	0.80			
49	048-134-15	Screwed Flange	1	1.2" 1 1/4"	FC	18.60			
50	121-469-12	Packing	1	P.C 90 x 58 x 2t	NR	*			
51	141-006-19	Hex. Nut	4	M10	SUS304	1.00			
52	142-128-11	Plain Washer	4	M10	SUS304	0.30			
53	153-105-16	Diffuser	1	15-BER2	SS+ SGP	415.10			
54	154-111-18	Diffuser Base	1	8/15-BER2	SS	35.40			
55	140-054-19	Hex. Bolt	3	M8 x 20	SUS304	0.80			
56	142-127-10	Plain Washer	3	M8	SUS304	0.20			
57	121-191-10	Packing	1	P.C 80 x 62	NBR	*			
58	151-1-5-10	Suction Casing	1	15-BER2	FC	299.60			
59	140-123-10	Hex. Bolt	4	M16 x 35	SUS304	4.10			
60	045-105-18	Nozzle Ring	1	28 x 34 x 17L	SUS304	13.20			
61	121-152-19	Packing	1	145mm	NBR	*			
		(Auto Type Diffuser Set)							
62	094-104-19	Guide Support	1	TOS-80	FCD	44.40			
63	140-079-10	Hex. Bolt	2	M10 x 40	SUS304	1.90			
64	140-101-12	Hex. Bolt	2	M12 x 50	SUS304	3.00			

PARTS PRICE LIST

15-BER2

IBR41A

Control Number : PLPA-IBR41A-01

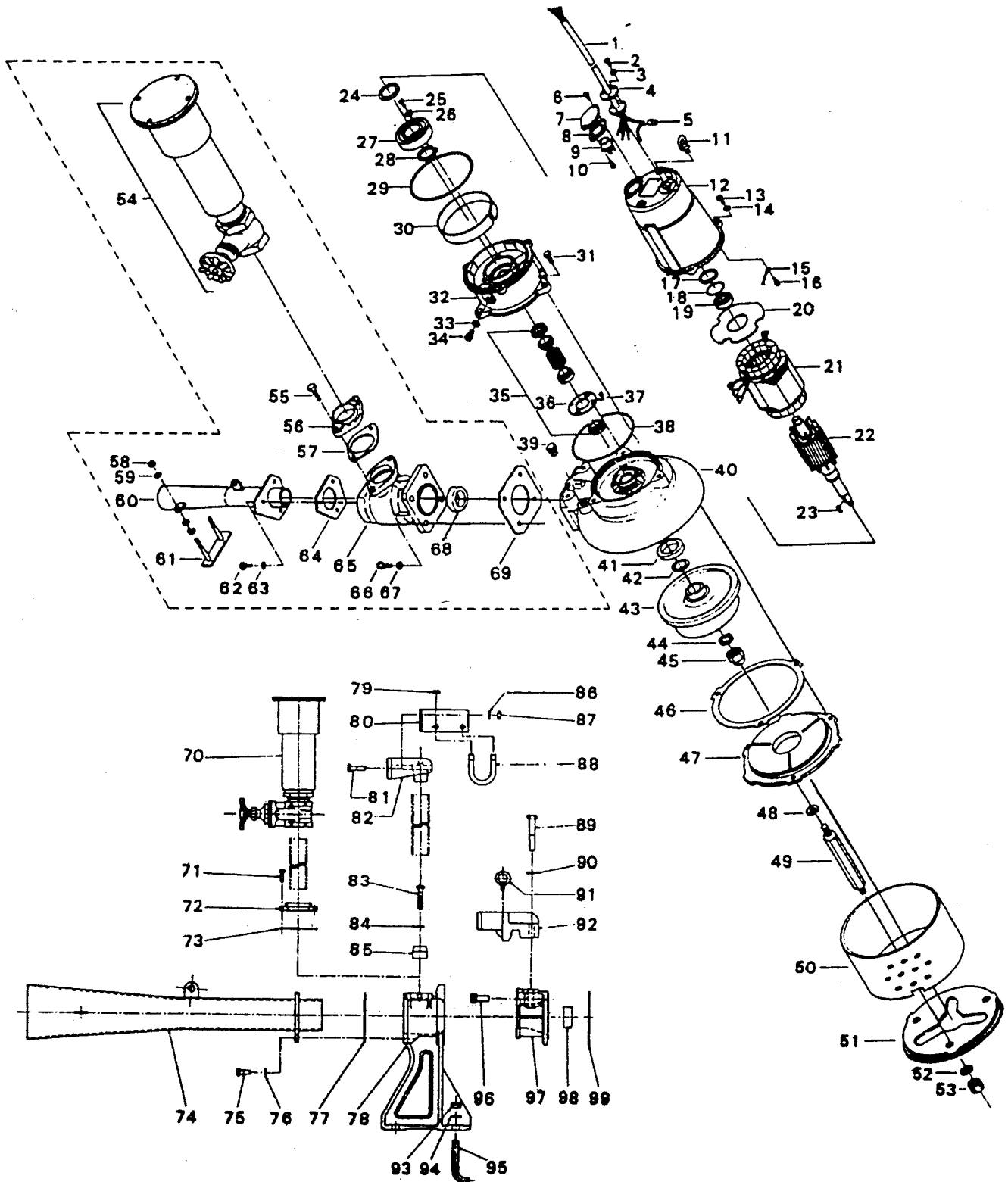
Supersedes : -----

(04/01/96)

ITEM	PARTS NO.	DESCRIPTION	Q'TY	SIZE	MATERIAL	PRICE (\$)	NOTE
65	096-101-12	Guide Connector	2	34mm	SS	5.90	
66	140-055-12	Hex. Bolt	2	M8 x 25	SUS304	0.80	
67	048-134-15	Screwed Flange	1	1.2"	FC	18.60	
68	121-469-12	Packing	1	P.C90 x 58 x 2t	NR	*	
69	153-105-16	Diffuser	1	15-BER2	SS+ SGP	415.10	
70	140-054-19	Hex. Bolt	3	M8 x 20	SUS304	0.80	
71	142-127-10	Plain Washer	3	M8	SUS304	0.20	
72	121-191-10	Packing	1	P.C80 x 62	NBR	*	
		(Foundation Bolt Set)	1	(&)		6.20	
73	141-008-37	Hex. Nut	2	M16	S35C	&	
74	142-130-29	Plain Washer	2	M16	SPC	&	
75	144-167-18	Foundation Bolt	2	M16 x 120	SS	&	
76	151-106-11	Suction Casing	1	TOS-15BER2	FC	459.40	
77	141-006-19	Hex. Nut	2	M10	SUS304	1.00	
78	142-164-19	Spring Washer	1	M10	SUS304	0.30	
79	141-006-19	Hex. Nut	2	M10	SUS304	1.00	
80	127-102-12	Air Inlet Pipe Support	1	TOS-15BER2	SS	8.90	
81	144-323-14	U-Bolt	1	#32, M10,B	SS	3.00	
82	072-100-17	Eye Bolt	1	M10	SS	5.20	
83	140-100-11	Hex. Bolt	2	M12 x 45	SUS304	2.80	
84	142-165-20	Spring Washer	2	M12	SUS304	0.50	
85	093-109-11	Guide Hook	1	TOS-80	FCD	170.90	
86	152-106-14	Nozzle	1	Guide Rail Type	FC	302.80	
87	045-105-18	Nozzle Ring	1	28 x 34 x 17L	SUS304	13.20	
88	121-152-19	Packing	1	145mm	NBR	*	
89	140-315-11	Hex. Cap Screw	4	M16 x 30	SUS304	8.30	
	173-302-17	Packing O-ring Set	1	(*)		13.30	

* Pricing in U.S. currency, and subject to change without notice.

* Items with * prices are available only in sets.



PARTS PRICE LIST

22-BER4

IBR62A

Control Number : FLPA-IBR62A-01

Supersedes : -----

(04/01/96)

ITEM	PARTS NO.	DESCRIPTION	Q'TY	SIZE	MATERIAL	PRICE (\$)	NOTE
1	001-149-21	Cab-tyre Cable	1	AWG14 x 32'	VCT	129.10	
2	140-021-17	Hex. Bolt	3	M5x20L	SUS304	0.30	
3	142-213-14	Seal Washer	2	WD-5	SPC+NBR	1.30	
4	003-111-20	Gland	1		SUS304	5.00	
5	009-146-19	Terminal	4	CE-5	CU	0.70	
6	140-052-17	Hex. Bolt	2	M8x16L	SUS304	0.70	
7	127-107-17	Fixture	1		SUS304	88.80	
8	121-255-13	Packing	1		NBR	*	
9	053-402-13	Motor Protector	1	KA313-GDZL103	(T)220V	148.00	
9	053-412-16	Motor Protector	1	KA313-GQZL104	(T)440V	162.80	
10	143-126-12	Cross Pan Screw	2	M4 x 12	SWRM	0.30	
11	072-100-17	Lifting Eye Bolt	2	M10	SS	5.20	
12	064-469-12	Motor Frame	1		FC	455.80	
13	140-055-10	Hex. Bolt	3	M8x25L	SUS304	0.80	
14	142-163-18	Spring Washer	3	M8	SUS304	0.20	
15	009-116-10	Solderless Terminal	1	R-2-4	CU	0.40	
16	143-124-10	Cross Pan Screw	1	M4 x 6	SWRM	0.20	
17	142-196-10	Wave Washer	1	#6205/6304	SK-5	2.20	
18	122-367-12	O-Ring	1	52x3.1	NBR	*	
19	052-107-12	Ball Bearing	1	#6304ZZC3		12.30	
20	058-117-13	L.Wire Prot. Plate	1	70x140x1.6t		44.80	
21	056-673-16	Motor Stator	1		220V	765.20	
21	056-677-10	Motor Stator	1		440V	765.20	
22	055-608-17	Rotor and Shaft	1			518.00	
23	147-081-16	Impeller Key	1	7x7x22L	SUS	8.90	
24	061-170-14	Bearing Collar	1	35.1x46x2t	SPCC	11.80	
25	143-042-13	Cross Pan Screw	3	M6x10L	SWRM	0.10	
26	062-196-19	Bearing Retainer	3	8x20.5x2.3t	SS	0.90	
27	052-110-18	Ball Bearing	1	#6307ZZC3		24.30	
28	146-022-16	Stop Ring	1	C35	SK-5	2.70	
29	122-333-19	O-Ring	1	170x3.1	NBR	*	
30	071-302-18	Bearing Collar	1	32L	SECC	11.80	
31	140-098-15	Hex. Bolt	3	M12x35L	SUS304	2.40	
32	060-388-14	Bearing Housing	1		FC	211.00	
33	121-247-12	Packing	1	11.8x18x2t	Poly.Sheet	*	
34	035-113-18	Oil Plug	1	M12x14L	SUS304	3.60	
35	025-279-12	Mechanical Seal	1	H-30A	SIC	293.00	
36	030-124-17	Seal Stopper	1	H-30/35	SPC	4.70	
37	143-070-10	Cross Pan Screw	3	M5x6L	SWRM	0.10	
38	122-246-14	O-Ring	1	180x3.1	NBR	*	
39	046-107-13	Air Release Valve	1	PT-1/2"	NYLON	16.00	
40	020-526-12	Pump Casing	1	22-BE2/CE2	FC	573.50	
41	026-111-18	Oil Seal	1	TC-456812	NBR	6.80	
42	040-107-28	Impeller Shim	1	25.2x38x0.3t	SUS304	1.50	
43	021-796-18	Impeller	1	60HZ	FC	127.30	
44	142-168-13	Spring Washer	1	M20	SUS304	1.80	
45	141-034-32	Hex. Cap Nut	1	M20(B=27)	S20C	5.90	
46	120-104-13	Packing	1	230.5x258x0.3t	MST	7.40	
47	022-506-12	Suction Cover	1	22/37-BER2	FC	103.70	
48	142-129-12	Plain Washer	3	M12	SUS304	0.50	
49	144-126-15	Stud Bolt	3	M12 x 192	SUS403	23.40	
50	023-269-13	Strainer	1	22/37-BER2	SPC	98.90	
51	049-134-18	Bottom Plate	3	KRS-A4	SPC	41.10	
52	142-129-12	Plain Washer	3	M12	SUS304	0.50	
53	141-007-10	Hex. Bolt	3	M12	SUS304	1.30	
		(Diffuser Set)				0.00	
54	215-106-12	Silencer Valve Set	1	22-55TR(PF-2")		458.80	
55	140-056-11	Hex. Bolt	2	M8 x 30	SUS304	0.90	
56	048-148-12	Screwed Flange	1	2" (P.C 90)	FCMB	20.10	
57	121-136-17	Packing	1	400FA(P.C 90)	NBR	*	
58	141-007-10	Hex. Nut	4	M12	SUS304	1.30	
59	142-129-12	Plain Washer	4	M12	SUS304	0.50	
60	153-106-17	Diffuser	1	22/37-BER2	SS = SPG	512.80	
61	154-110-17	Diffuser Base	1	22/55-BER2	SS	56.50	
62	140-097-14	Hex. Bolt	3	M12 x 30	SUS304	2.40	
63	142-129-12	Plain Washer	3	M12	SUS304	0.50	
64	121-192-11	Packing	1	P.C.128 x 90	NBR	*	
65	151-109-14	Suction Casing	1	22/37-BER2	FC	364.70	

PARTS PRICE LIST

22-BER4

IBR62A

Control Number : PLPA-IBR62A-01

Supersedes : -----

(04/01/96)

ITEM	PARTS NO.	DESCRIPTION	Q'TY	SIZE	MATERIAL	PRICE (\$)	NOTE
66	140-123-10	Hex. Bolt	4	M16 x 35	SUS304	4.10	
67	142-166-11	Spring Washer	4	M16	SUS304	1.00	
68	045-102-15	Nozzle Ring	1	43 x 60.5 x 24	SUS304	82.00	
69	121-152-19	Packing	1	(P.C 145)	NBR	*	
		(Auto Type Diffuser Set)				0.00	
70	215-106-12	Silenser Valve Set	1	22/55-BER2		458.80	
71	140-056-11	Hex. Bolt	2	M8 x 30	SUS304	0.90	
72	048-148-12	Screwed Flange	1	P.C.90 2"	FCMB	20.10	
73	121-136-17	Packing	1	400FA(P.C 90)	NBR	*	
74	153-106-17	Diffuser	1	22/37-BER4	SS + SGP	512.80	
75	140-097-14	Hex. Bolt	3	M12 x 30	SUS304	2.40	
76	142-129-12	Plain Washer	3	M12	SUS304	0.50	
77	121-192-11	Packing	1	P.C 128 x 90	NBR	*	
78	151-108-13	Suction Casing	1	Guide Rail Type	FC	859.60	
79	141-006-19	Hex. Nut	2	M10	SUS304	1.00	
80	127-103-13	Air Inlet Pipe Support	1	T)S-22/55BER2	SS	12.40	
81	140-099-16	Hex. Bolt	2	M12 x 40	SUS304	2.50	
82	094-105-10	Guide Support	1	TOS-100	FCD	131.60	
83	140-103-14	Hex. Bolt	2	M12 x 60	SUS304	3.60	
						0.00	
84	142-165-10	Spring Washer	2	M12	SUS304	0.50	
85	096-102-13	Guide Connector	2	51mm	SS	17.00	
86	142-165-10	Spring Washer	2	M12	SUS304	0.50	
87	141-007-10	Hex. Nut	2	M12	SUS304	1.30	
88	144-325-16	U-Bolt	1	#50, M10, B	SS	3.00	
89	140-134-14	Hex. Bolt	2	M16 x 90	SUS304	8.30	
90	142-166-11	Spring Washer	2	M16	SUS304	1.00	
91	072-100-17	Eye Bolt	1	M10	SS	5.20	
92	093-110-15	Guide Hook	1	TO-100	FCD	256.00	
						0.00	
		(Foundation Bolt Set)	1	(&)		6.20	
93	141-008-37	Hex. Nut	4	M16	S35C	&	
94	142-130-29	Plain Washer	4	M16	SPC	&	
95	144-167-18	Foundation Bolt	4	M16 x 120	SS	&	
96	140-316-12	Hex. Cap Screw	4	M16 x 35	SUS304	8.90	
97	152-109-17	Nozzle	1	Guide Rail Type	FC	327.20	
98	045-102-15	Nozzle Ring	1	43 x 60.5 x 24L	SUS304	82.00	
99	121-152-19	Packing	1	145mm	NBR	*	
						0.00	
	173-486-16	Packing O-ring Set	1	(*)		26.00	

* Pricing in U.S. currency, and subject to change without notice.

* Items with * prices are available only in sets.



EXPLOADED VIEW

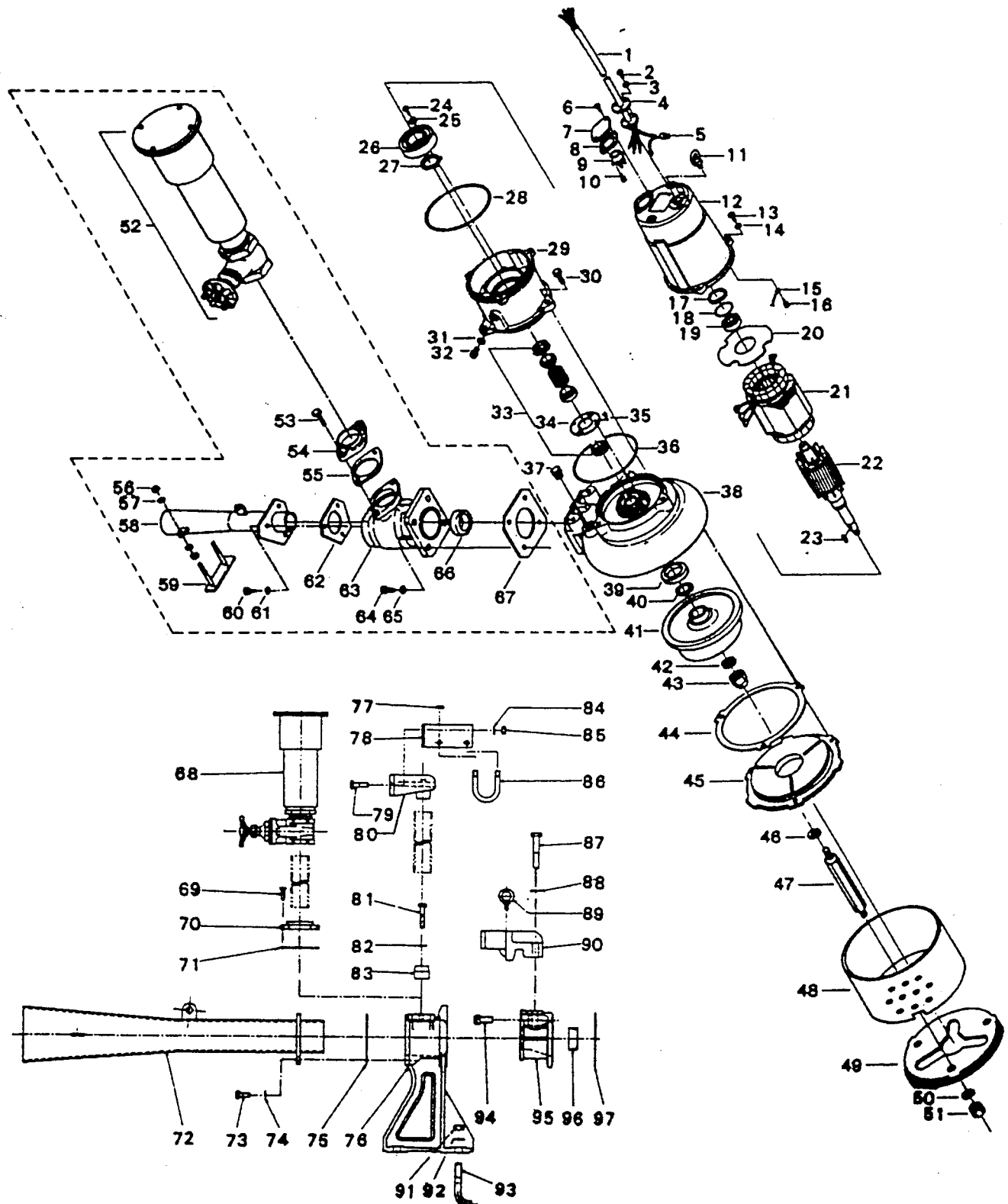
Control Number :
#DREV-IBR63A-01

Model : 37-BER4 / TOS-37BER4

Supersedes :

Submersible Ejector Pump

04-01-96



PARTS PRICE LIST

37-BER4

IBR63A

Control Number : PLPA-IBR63A-01

Supersedes : -----

(04/01/96)

ITEM	PARTS NO.	DESCRIPTION	Q'TY	SIZE	MATERIAL	PRICE (\$)	NOTE
1	001-150-25	Cab-tyre Cable	1	AWG12 x 32'	VCT	191.50	
2	140-021-17	Hex. Bolt	3	M5x20L	SUS304	0.30	
3	142-213-14	Seal Washer	3	WD-5	SPC+NBR	1.30	
4	003-111-20	Gland	1		SUS304	5.00	
5	009-146-19	Terminal	4	CE-5	CU	0.70	
6	140-052-17	Hex. Bolt	2	M8x16L	SUS304	0.70	
7	127-107-17	Fixture	1		SUS304	88.80	
8	121-255-13	Packing	1		NBR	*	
9	053-403-14	Motor Protector	1	KA313-GGZL110	(T)220V	121.40	
9	053-271-11	Motor Protector	1	KA313-GCXL103	(T)440V	115.00	
10	143-126-12	Cross Pan Screw	2	M4 x 12	SWRM	0.30	
11	072-100-17	Lifting Eye Bolt	2	M10	SS	5.20	
12	064-469-12	Motor Frame	1		FC	455.80	
13	140-055-10	Hex. Bolt	3	M8x25L	SUS304	0.80	
14	142-163-18	Spring Washer	3	M8	SUS304	0.20	
15	009-116-10	Solderless Terminal	1	R-2-4	CU	0.40	
16	143-124-10	Cross Pan Screw	1	M4 x 6	SWRM	0.20	
17	142-196-10	Wave Washer	1	#6205/6304	SK-5	2.20	
18	122-367-10	O-Ring	1	52 x 3.1	NBR	*	
19	052-107-12	Ball Bearing	1	#6304ZZC3		12.30	
20	058-117-13	L.Wire Prot. Plate	1	70x140x1.6t	Resin	44.80	
21	056-679-12	Motor Stator	1		220V	987.20	
21	056-683-19	Motor Stator	1		440V	987.20	
22	055-669-16	Rotor and Shaft	1			592.00	
23	147-066-15	Impeller Key	1	10x8x22L	SUS	8.90	
24	143-042-13	Cross Pan Screw	3	M6x10L	SWRM	0.10	
25	062-196-19	Bearing Retainer	3	8x20.5x2.3t	SS	0.90	
26	052-112-10	Ball Bearing	1	#6309ZZC3		44.50	
27	146-027-11	Stop Ring	1	C45	SK-5	5.60	
28	122-333-19	O-Ring	1	170x3.1	NBR	*	
29	060-389-15	Bearing Housing	1		FC	239.80	
30	140-098-15	Hex. Bolt	3	M12x35L	SUS304	2.40	
31	121-247-12	Packing	1	11.8x18x2t	Poly.Sheet	*	
32	035-113-18	Oil Plug	1	M12x14L	SUS304	3.60	
33	025-280-16	Mechanical Seal	1	H-35A	SIC	340.40	
34	030-124-17	Seal Stopper	1		SPC	5.30	
35	143-070-10	Cross Pan Screw	3	M5x6L	SWRM	0.10	
36	122-246-14	O-Ring	1	180x3.1	NBR	*	
37	046-107-13	Air Valve	1	PT-1/2"	NYLON	16.00	
38	020-527-13	Pump Casing	1	37-BE4	FC	685.80	
38	020-529-15	Pump Casing	1	37-BEH4	FC	685.80	
39	026-143-19	Oil Seal	1	TC-507212	NBR	8.10	
40	040-113-14	Impeller Shim	1	32.5x48x0.3t	SUS304	1.90	
41	021-798-10	Impeller	1	60Hz	FC	153.50	
42	142-170-18	Spring Washer	1	M24	SUS304	3.30	
43	141-035-33	Hex. Cap Nut	1	M24 (B=32)	S20C	8.10	
44	120-104-13	Packing	1	230.5x258x0.3t		7.40	
45	022-506-12	Suction Cover	1	22-BER/37-BER4	FC	103.70	
46	142-129-12	Plain Washer	3	M12	SUS304	0.50	
47	144-126-15	Stud Bolt	3	M12 x 192	SUS304	23.40	
48	023-269-13	Strainer	1	22/37-BER4	SPC	98.90	
49	049-134-18	Bottom Plate	1	KRS-A4	SPC	41.10	
50	142-129-12	Plain Washer	3	M12	SUS304	0.50	
51	141-007-10	Hex. Nut	3	M12	SUS304	1.30	
		(Diffuser Set)					
52	215-106-12	Silencer Valve Set	1	22/55-TR(PF-2)	SWRM	458.80	
53	140-056-11	Hex. Bolt	2	M8 x 30	SUS304	0.90	
54	048-148-12	Screwed Flange	1	2"	FCMB	20.10	
55	121-136-17	Packing	1	400FA	NBR	*	
56	141-007-10	Hex. Nut	4	M12	SUS304	1.30	
57	142-129-12	Plain Washer	4	M12	SUS304	0.50	
58	153-106-17	Diffuser	1	22/37-BER4	SS+ SGP	512.80	
59	154-110-17	Diffuser Base	1	22/55-BER	SS	56.50	
60	140-097-14	Hex. Bolt	3	M12 x 30	SUS304	2.40	
61	142-129-12	Plain Washer	3	M12	SUS304	0.50	
62	121-192-11	Packing	1	P.C.128 x 90	NBR	*	
63	151-109-14	Suction Casing	1	22/37-BER2	FC	364.70	
64	149-123-10	Hex. Bolt	4	M16 x 35	SUS304	4.10	
65	142-166-11	Spring Washer	4	M16	SUS304	1.00	
66	045-102-15	Nozzle Ring	1	43 x 60.5 x 24L	SUS304	82.00	
67	121-152-19	Packing	1	145mm	NBR	*	
		(Auto Type Diffuser Set)					
68	215-106-12	Silencer Valve Set	1	22/55TR		458.80	
69	140-056-11	Hex. Bolt	2	M8 x 30	SUS304	0.90	

PARTS PRICE LIST

37-BER4

IBR63A

Control Number : PLPA-IBR63A-01

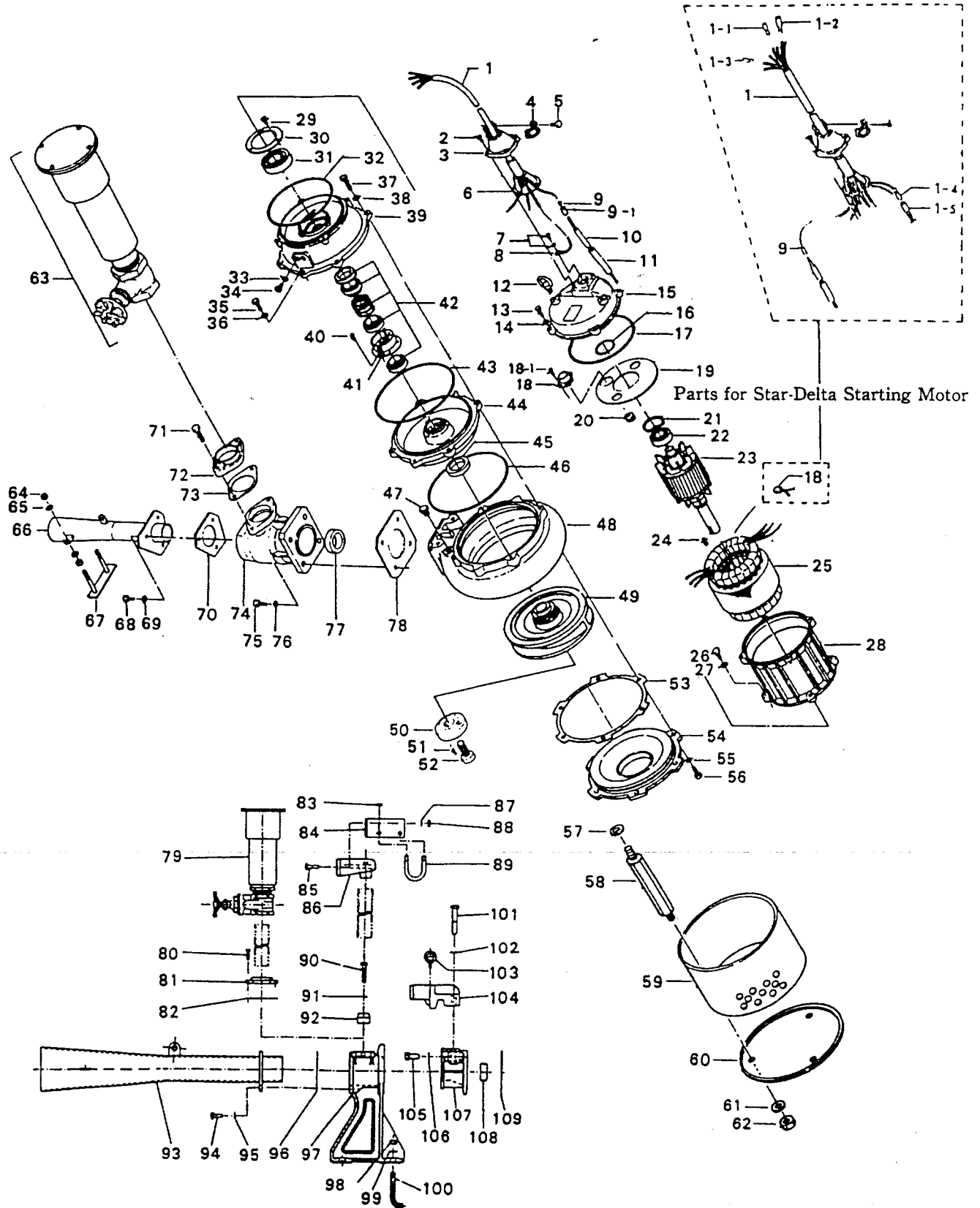
Supersedes : -----

(04/01/96)

ITEM	PARTS NO.	DESCRIPTION	Q'TY	SIZE	MATERIAL	PRICE (\$)	NOTE
70	048-148-12	Screwed Flange	1	2"	FCMB	20.10	
71	121-136-17	Packing	1	400FA	NBR	*	
72	153-106-17	Diffuser	1	22/37-BER2	SS + SGP	512.80	
73	140-097-14	Hex. Bolt	3	M12 x 30	SUS304	2.40	
74	142-129-12	Plain Washer	3	M12	SUS304	0.50	
75	121-192-11	Packing	1	P.C 128 x 90	NBR	*	
76	151-108-13	Suction Casing	1	Guide Rail Type	FC	859.60	
77	141-006-19	Hex. Nut	2	M10	SUS304	1.00	
78	127-103-13	Air Inlet Pipe Support	1	TOS-22/55BER	SS	12.40	
79	140-099-16	Hex. Bolt	2	M12 x 40	SUS304	2.50	
80	094-105-10	Guide Support	1	TOS-100	FCD	131.60	
81	140-103-14	Hex. Bolt	2	M12 x 60	SUS304	3.60	
82	142-165-10	Spring Washer	2	M12	SUS304	0.50	
83	096-102-13	Guide Connector	2	51mm	SS	17.00	
84	142-165-10	Spring Washer	2	M12	SUS304	0.50	
85	141-007-10	Hex. Nut	2	M12	SUS304	1.30	
86	144-325-16	U-Bolt	1	#50, M10.B	SS	3.00	
87	140-134-14	Hex. Bolt	2	M16 x 90	SUS304	8.30	
88	142-166-11	Spring Washer	2	M16	SUS304	1.00	
89	072-100-17	Eye Bolt	1	M10	SS	5.20	
90	093-110-15	Guide Hook	1	TOS-100	FCD	256.00	
		(Foundation Bolt Set)		(&)		6.20	
91	141-008-37	Hex. Nut	4	M16	S35C	&	
92	142-130-29	Plain Washer	4	M16	SPC	&	
93	144-167-18	Foundation Bolt	4	M16 x 120	SS	&	
94	140-316-12	Hex. Cap Screw	4	M16 x 30	SUS304	8.90	
95	152-109-17	Nozzle	1	Guide Rail Type	FC	327.20	
96	045-102-15	Nozzle Ring	1	43 x 60.5 x 24L	SUS304	82.00	
97	121-152-19	Packing	1	145mm	NBR	*	
	173-486-16	Packing O-ring Set	1	(*)		26.00	

* Pricing in U.S. currency, and subject to change without notice.

* Items with * prices are available only in sets.



PARTS PRICE LIST

55-BER3

IBR55A

Control Number : PLPA-IBR55A-01

Supersedes : -----

(04/01/96)

ITEM	PARTS NO.	DESCRIPTION	Q'TY	SIZE	MATERIAL	PRICE (\$)	NOTE
1	001-315-20	Cab-tyre Cable	1	AWG12 x 32'	2PNCT	414.40	
2	140-055-10	Hex. Bolt	4	M8x25L	SUS304	0.80	
3	006-126-14	Stuffing Box	1	No.2	FC	40.00	
4	070-107-18	Clamp	1		FC	4.40	
5	140-035-14	Hex. Bolt	2	M6x20L	SUS304	0.40	
6	008-142-12	Rubber Boot	1	KR.2-7	CR	12.10	
7	143-124-10	Cross Pan Screw	1	M4x6L	SWRM	0.10	
8	009-122-19	Solderless Terminal	1	R-3.5-4	CU	0.40	
9	009-123-10	Solderless Terminal	6	P-5.5	CU	0.40	
9-1	009-101-12	Terminal	3		BSEB	4.70	
10	002-129-15	Heat Shrink Tube	1	NST-150	\$/3.2ft	13.30	
11	002-132-11	Heat Shrink Tube	1	NST-120	\$/3.2ft	14.80	
12	072-102-48	Lifting Eye Bolt	2	M12	SS	6.10	
13	140-078-19	Hex. Bolt	4	M10x35L	SUS304	1.80	
14	142-164-19	Spring Washer	4	M10	SUS304	0.30	
15	050-330-10	Motor Bracket	1		FC	220.50	
16	122-244-12	O-Ring	1	61.4x3.1	NBR	*	
17	122-149-16	O-Ring	1	G-190	NBR	*	
18	053-331-10	Motor Protector	1	KA314-HLXL00-F	(H.C)220V	272.30	
18	053-374-15	Motor Protector	1	KA314-HRXL00-F	(H.C)440V	165.80	
18-1	143-015-17	Cross Pan Screw	2	M4x10L	SWRM	0.10	
19	058-135-17	L.Wire Prot. Plate	1	70x189x2.3t	SPHC	82.90	
20	016-102-15	L.Wire Prot. Bush	1		SBR	8.90	
21	142-197-11	Wave Washer	1	#6305	SK-5	2.40	
22	052-108-13	Ball Bearing	1	#6305ZZC3		14.50	
23	055-487-18	Rotor and Shaft	1			778.50	
24	147-006-17	Impeller Key	1	10x8x35L	SUS	14.80	
25	056-444-16	Motor Stator	1		220V	828.80	
25	056-829-19	Motor Stator	1		440V	953.10	
26	140-079-10	Hex. Bolt	4	M10x40L	SUS304	1.90	
27	142-164-19	Spring Washer	4	M10	SUS304	0.30	
28	064-400-15	Motor Frame	1		FC	177.60	
29	140-033-25	Hex. Bolt	3	M6x16L	SWRM	0.20	
30	062-182-12	Bearing Retainer	1	92x130x4.5t	SS	35.50	
31	052-112-10	Ball Bearing	1	#6309ZZC3		44.50	
32	122-149-16	O-Ring	1	G-190	NBR	*	
33	121-247-12	Packing	2	11.8x18x2t	Poly. Sheet	*	
34	035-113-18	Oil Plug	2	M12x14L	SUS304	3.60	
35	140-099-16	Hex. Bolt	2	M12x40L	SUS304	2.50	
36	142-165-10	Spring Washer	2	M12	SUS304	0.50	
37	140-104-15	Hex. Bolt	4	M12x65L	SUS304	3.60	
38	142-165-10	Spring Washer	4	M12	SUS304	0.50	
39	060-394-13	Bearing Housing	1		FC	488.40	
40	143-070-10	Cross Pan Screw	3	M5x6L	SWRM	0.10	
41	030-110-23	Oil Ring	1		SPC	5.30	
42	025-280-16	Mechanical Seal	1	H-35A	SIC	340.40	
43	122-159-19	O-Ring	1	G-280	NBR	*	
44	029-187-14	Oil Casing	1		FC	218.20	
45	026-115-12	Oil Seal	1	TC-608212	NBR	17.50	
46	122-159-19	O-Ring	1	G-280	NBR	*	
47	046-107-13	Air Valve	1	PT-1/2'	NYLON	16.00	
48	020-531-23	Pump Casing	1		FC	717.80	
49	021-804-10	Impeller	1	60HZ	FC	455.80	
50	142-202-10	Retaining Washer	1	13x52x15	SUS304	29.60	
51	144-293-27	Hex. Socket Screw	2	M6 x 12	SUS304	0.70	
52	140-303-16	Hex. Socket Cap Screw	1	M12x40L	SUS304	6.80	
53	120-102-11	Packing	1	301x328x0.3t	Poly. Sheet	4.00	
54	022-534-19	Suction Cover	1	55-BER3	FC	198.30	
55	142-165-10	Spring Washer	3	M12	SUS304	0.50	
56	140-097-14	Hex. Bolt	3	M12x30L	SUS304	2.40	
57	142-165-10	Spring Washer	3	M12	SUS304	0.50	
58	144-126-15	Stud Bolt	3	M12 x 192	SUS403	23.40	
59	023-270-17	Strainer	1	55-BER3	SPC	91.20	
60	049-116-14	Bottom Plate	1	KRB	SPC	44.80	
61	142-129-12	Plain Washer	3	M12	SUS304	0.50	
62	141-007-36	Hex. Nut	3	M12	S35C	0.20	
		(Diffuser Set)					
63	215-106-12	Silencer Valve Set	1	22/55-TR	SUS304	458.80	
64	141-007-10	Hex. Nut	4	M12	SUS304	1.30	
65	142-165-10	Spring Washer	4	M12	SUS304	0.50	
66	153-107-18	Diffuser	1	55-BER3	SS+SGP	608.90	
67	154-110-17	Diffuser Base	1	22/55-BER	SS	56.50	
68	140-097-14	Hex. Bolt	3	M12 x 30	SUS304	2.40	
69	142-165-10	Spring Washer	3	M12	SUS304	0.50	
70	121-192-11	Packing	1	P.C 128 x 90	NBR	*	

PARTS PRICE LIST

55-BER3

IBR55A

Control Number : PLPA-IBR55A-01

Supersedes : -----

(04/01/96)

ITEM	PARTS NO.	DESCRIPTION	Q'TY	SIZE	MATERIAL	PRICE (\$)	NOTE
71	140-056-11	Hex. Bolt	2	M8 x 30	SUS304	0.90	
72	048-148-12	Screwed Flange	1	2"	FCMB	20.10	
73	121-469-12	Packing	1	P.C 90x58x2t	NR	*	
74	151-107-12	Suction Casing	1	55-BER3	FC	429.80	
75	140-123-10	Hex. Bolt	4	M16 x 35	SUS304	4.10	
76	142-166-11	Spring Washer	4	M16	SUS304	1.00	
77	045-103-16	Nozzle Ring	1	52.7x60.5x24L	SUS304	66.20	
78	121-153-10	Packing	1	160mm	NBR	*	
		(Auto Tyep Diffuser Set)					
79	215-106-12	Silenser Valve Set	1	22/55-TR		458.80	
80	140-056-11	Hex. Bolt	2	M8 x 30	SUS304	0.90	
81	048-148-12	Screwed Flange	1	2"	FCMB	20.10	
82	121-469-12	Packing	1	P.C90x58x2t	NR	*	
83	141-006-19	Hex. Nut	2	M10	SUS304	1.00	
84	127-103-13	Air Inlet Pipe Support	1	TOS22/55BER	SS	12.40	
85	140-099-16	Hex. Bolt	2	M12 x 40	SUS304	2.50	
86	094-105-10	Guide Support	1	TOS-100	FCD	82.90	
87	142-129-12	Plain Washer	2	M12	SUS304	0.50	
88	141-007-10	Hex. Nut	2	M12	SUS304	1.30	
89	144-524-17	U-Bolt	1	#50 M10	SS	3.00	
90	140-103-14	Hex. Bolt	2	M12 x 60	SUS304	3.60	
91	142-165-10	Spring Washer	2	M12	SUS304	0.50	
92	096-102-13	Guide Connector	2	51mm	SS	14.80	
93	153-107-18	Diffuser	1	55-BER3	SS + SGP	608.90	
94	140-097-14	Hex. Bolt	3	M12 x 30	SUS304	2.40	
95	142-165-10	Spring Washer	3	M12	SUS304	0.50	
96	121-192-11	Packing	1	P.C 128 x 90	NBR	*	
97	151-108-13	Suction Casing	1	TOS-22/55BER	FC	859.60	
		(Foundation Bolt set)	1	(&)		6.20	
98	141-008-37	Hex. Nut	4	M16	S35C	&	
99	142-130-29	Plain Washer	4	M16	SPC	&	
100	144-167-18	Foundation Bolt	4	M16 x 120	SS	&	
101	140-134-14	Hex. Bolt	2	M16 x 90	SUS304	8.30	
102	142-166-11	Spring Washer	2	M16	SUS304	1.00	
103	072-100-17	Eye Bolt	1	M10	SS	5.20	
104	093-110-15	Guide Hook	1	TOS-100	FCD	256.00	
105	140-316-12	Hex. Cap Screw	4	M16 x 35	SUS304	8.90	
106	142-166-11	Spring Washer	4	M16	SUS304	1.00	
107	152-107-15	Nozzle	1	TOS-55BER3	FC	372.80	
108	045-103-16	Nozzle Ring	1	52.7x60.5x24L	SUS304	66.20	
109	121-153-10	Packing	1	160mm	NBR	*	
	173-385-14	Packing O-ring Set	1	(*)		43.20	

* Pricing in U.S. currency, and subject to change without notice.

* Items with * prices are available only in sets.