

PARTS LIST		SUBMERSIBLE AERATOR			Date: 6/12/2012	
ITEM	PART No.	DESCRIPTION	QTY	SIZE	MATERIAL	NOTES
1	140-035-14	Hex.Bolt	2	M6x20	SUS304	
2	070-107-18	Cable Clamp	1		FC	
3	140-055-10	Hex.Bolt	4	M8x25	SUS304	
4	142-163-18	Spring Washer	4	M8	SUS304	
5	006-126-14	Stuffing Box	1	No.2	FC	
6	001-936-23	Cabtyre Cable Set(10m)230V-60Hz(USA)	1	2PNCT4Cx3.5mm2	KR-2	
	001-936-23	Cabtyre Cable Set(10m)460V-60Hz(USA)	1	2PNCT4Cx3.5mm2	KR-2	
7	008-142-12	Mould Cover 230V-60Hz(USA)	1	KR2-7	CR	
	008-142-12	Mould Cover 460V-60Hz(USA)	1	KR2-7	CR	
8	009-275-18	Compression type Terminal 230V-60Hz(USA)	3	TGNB-5.5(Insulated)	CU	
	009-275-18	Compression type Terminal 460V-60Hz(USA)	3	TGNB-5.5(Insulated)	CU	
9	143-085-21	Pan Screw (w/Spring Washer)	1	M4x6	SWRM	
10	009-122-19	Terminal	1	R-3.5-4	CU	
11	072-102-22	Eye Bolt	2	M12	SUS304	
12	142-397-13	Washer		d13xd24x0.1t	SUS304	
	142-398-14	Washer		d13xd24x0.3t	SUS304	
13	140-078-19	Hex.Bolt	4	M10x35	SUS304	
14	142-164-19	Spring Washer	4	M10	SUS304	
15	050-435-16	Motor Bracket	1		FC	
16	122-151-11	O-Ring	1	G-200(199.3xd5.7)	NBR	
17	142-000-07	Wave Washer	1	6305(d61xd51x4.5t)	SK5	
18	122-244-12	O-Ring	1	61.4xd3.1	NBR	
19	052-108-13	Bearing	1	6305ZC3		
20	058-184-11	Lead Wire Protection Plate	1	d90xd224x1.6t	SPHC	
21	143-126-12	Pan Screw (w/Spring Washer/Plain Washer)	2	M4x12	SWRM	
8	053-498-16	Motor Protector 230V-60Hz(USA)	1	KA314-HLXL203	(B.C)	
	053-439-22	Motor Protector 460V-60Hz(USA)	1	KA314-HMXL00	(H.C)	
23	055-000-72	Rotor	1Set			
24	147-067-16	Impeller Key	1	10x8x32l	SUS420	
25	056C1112	Stator 230V-60Hz(USA)	1Set			
	056C1213	Stator 460V-60Hz(USA)	1Set			
26	140-079-10	Hex.Bolt	4	M10x40	SUS304	
27	142-164-19	Spring Washer	4	M10	SUS304	
28	064-000-11	Motor Frame	1		FC	
29	122-151-11	O-Ring	1	G-200(199.3xd5.7)	NBR	
30	140-032-37	Hex.Bolt	3	M6x15	SWRM	
31	062-223-16	Bearing Fixing Plate	1	d92xd130x4.5t	SS	
32	052-112-10	Bearing	1	6309ZC3		
33	140-112-16	Hex.Bolt	4	M12x110	SUS304	
34	142-165-10	Spring Washer	4	M12	SUS304	
35	140-099-16	Hex.Bolt	4	M12x40	SUS304	
36	142-165-10	Spring Washer	4	M12	SUS304	
37	060-000-43	Bearing Housing	1		FC	
38	035-113-18	Oil Plug	2	M12x14	SUS304	

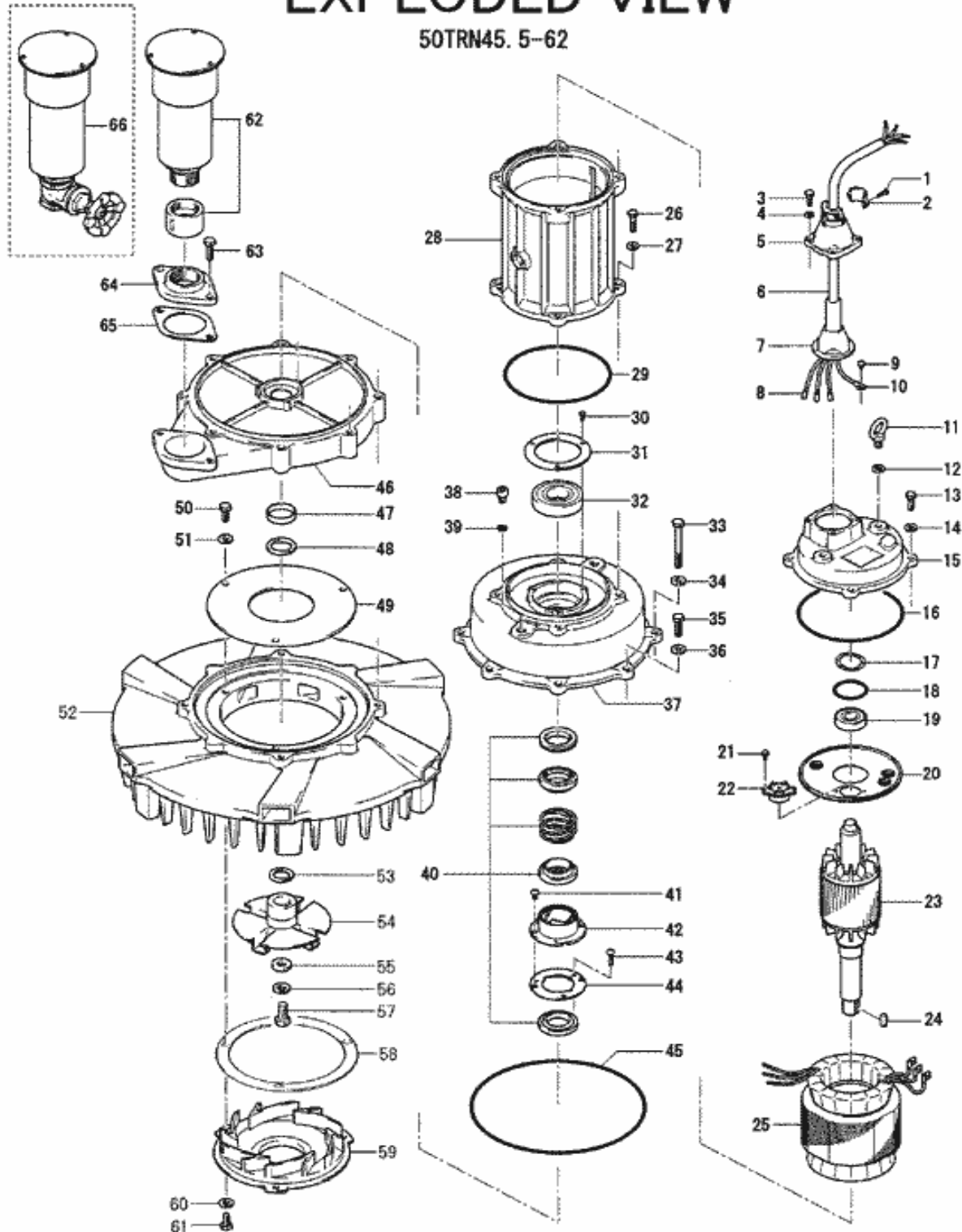
PARTS LIST		SUBMERSIBLE AERATOR			Date: 6/12/2012	
ITEM	PART No.	DESCRIPTION	QTY	SIZE	MATERIAL	NOTES
39	121-247-12	Packing	2	d12.3xd18x2t	PE	
40	025-000-38	Mechanical Seal	1	H-40	SiC	
41	143-070-23	Pan Screw	2	M5x6	SWRM	
42	030-141-10	Oil Lifter	1	H-40(T)	Resin	
43	143-070-10	Pan Screw	3	M5x6	SWRM	
44	030-149-18	Seal Stopper	1	H-40/45	SPCC	
45	122-265-19	O-Ring	1	335xd5.7	NBR	
46	018-104-13	Air Passage	1	37/110-TR	FC	
47	026-200-28	Distance Piece	1	37/110-TR	SGP	
48	026-205-10	Oil Seal	1	VC-40586	NBR	
49	028-000-30	Middle Plate	1	50TRN45.5	SUS410	
50	140-096-13	Hex.Bolt	3	M12x25	SUS304	
51	142-165-10	Spring Washer	3	M12	SUS304	
52	019-000-16	Guide Vane	1	50TRN42.2/5.5	FC	
53	040-113-14	Impeller Shim		d32.5xd48x0.3t	SUS304	
54	021-007-14	Impeller(60Hz)	1	50TRN45.5-62	SCS1	
55	142-103-10	Impeller Fixing Washer	1	d18xd38x6t	SUS403	
56	142-166-11	Spring Washer	1	M16	SUS304	
57	140-125-12	Hex.Bolt	1	M16x45	SUS304	
58	120-000-17	Packing		50TRN42.2/5.5(d245xd296)	PE	
59	022-001-55	Suction Cover(60Hz)	1	50TRN45.5-62	SCS1	
60	142-165-10	Spring Washer	3	M12	SUS304	
61	140-096-13	Hex.Bolt	3	M12x25	SUS304	
62	215-000-07	Silencer Socket Set	1Set	TRN42.2/3.7/5.5-52/62	FCMB	
63	140-099-16	Hex.Bolt	2	M12x40	SUS304	
64	048-136-17	Screwed Flange	1	NPT-2(P.C.140)	FC	
65	121-137-18	Packing	1	MBT(P.C.140)	NBR	
66	215-106-12	Silencer & Valve Set	1Set	22/55-TR(PF-2)	CAC40	
		<Packing O-Ring Set>				
	173-000-69	Packing O-Ring Set	1Set	(Marked by *)		
16	122-151-11	O-Ring (M.Bracket/M.Frame)	1	G-200(199.3xd5.7)	NBR	
18	122-244-12	O-Ring (Upp. Bearing)	1	61.4xd3.1	NBR	
29	122-151-11	O-Ring (M.Frame/Brq.Housing)	1	G-200(199.3xd5.7)	NBR	
39	121-247-12	Packing (Oil Plug)	2	d12.3xd18x2t	PE	
45	122-265-19	O-Ring (Brq.Housing/Air Passage)	1	335xd5.7	NBR	
65	121-137-18	Packing(Screwed Flange)	1	MBT(P.C.140)	NBR	
		Lubricant		Turbine Oil VG32 6,000ml		

\* Indicates items included in set

PARTS LIST		SUBMERSIBLE AERATOR				Date: 6/12/2012
ITEM	PART No.	DESCRIPTION	QTY	SIZE	MATERIAL	NOTES

## EXPLODED VIEW

50TRN45.5-62



C-00944-1