

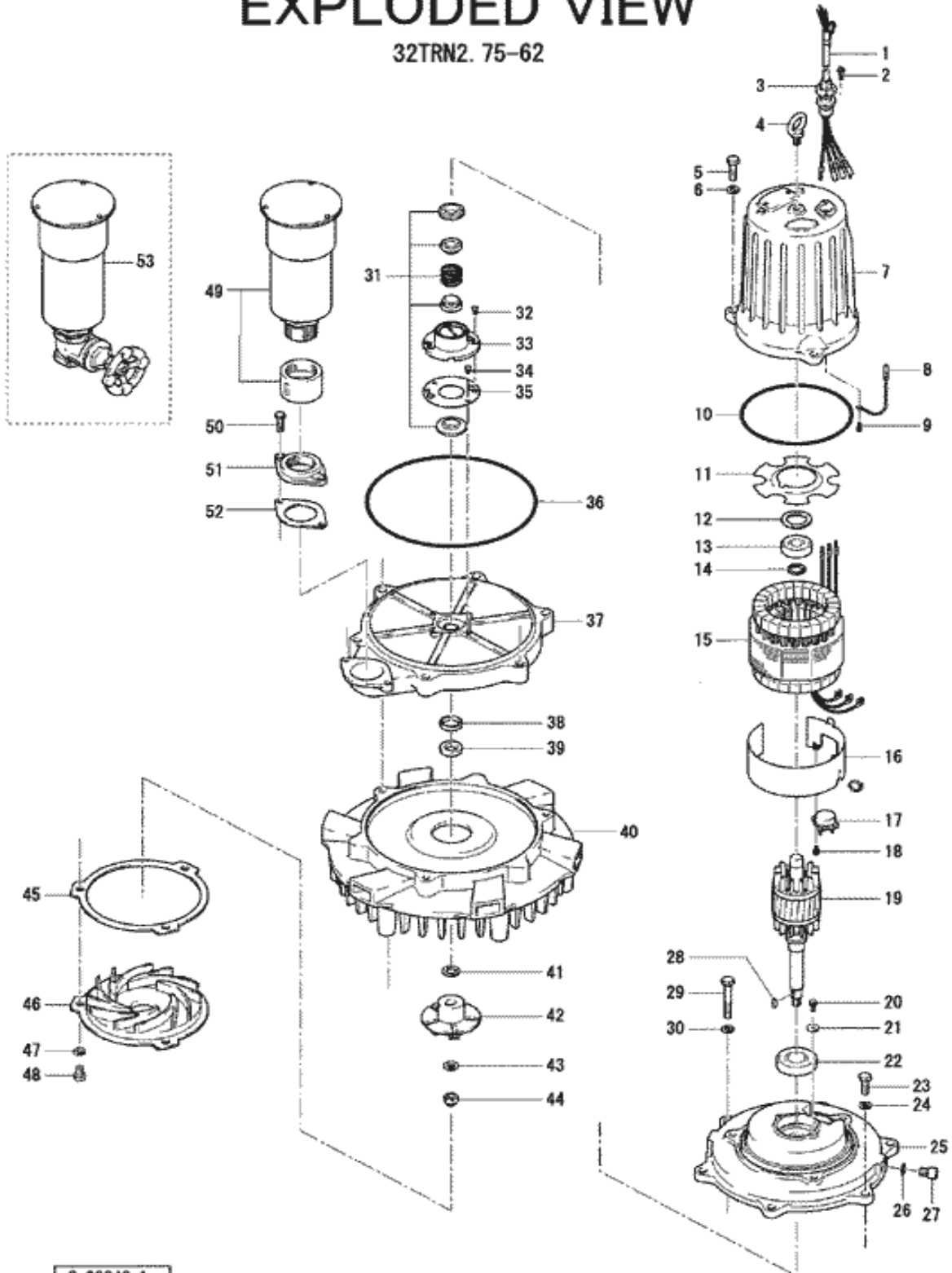
PARTS LIST		SUBMERSIBLE AERATORS			8/20/2012	
ITEM	PART No.	DESCRIPTION	QTY	SIZE	MATERIAL	NOTES
1	001-803-20	Cable Set(10m) 230V-60Hz(USA)	1	VCT4Cx1.25mm2	LBT	
	001-803-20	Cable Set(10m) 460V-60Hz(USA)	1	VCT4Cx1.25mm2	LBT	
2	140-427-17	Hex.Bolt (w/Plain Washer)	2	M5x15	SUS304	
3	003-190-10	Gland	1		SUS316	
4	072-100-20	Eye Bolt	1	M10	SUS304	
5	140-076-17	Hex.Bolt	3	M10x30	SUS304	
6	142-164-19	Spring Washer	3	M10	SUS304	
7	064-000-08	Motor Frame	1		FC	
8	009-000-98	Earth Terminal	1Set	1.25mm2x170L		interchangeable with OLD part# 009-211-16 (L=125)
9	143-085-34	Pan Screw (w/Spring Washer)	1	M4x6	C3604	
10	122-283-13	O-Ring	1	165xd3.1	NBR	
11	058-000-13	Lead Wire Protection Plate	1	d61xd132x2t	Bakelite	
12	142-389-12	Wave Washer	1	6204	SK5	
13	052-187-16	Bearing (w/O-ring)	1	AC-6204ZZC3		
14	061-174-18	Slinger	1	d20xd27x2t	SPC	
15	056-001-12	Stator 230V-60Hz(USA)	1Set			
	056-001-14	Stator 460V-60Hz(USA)	1Set			
16	127-000-26	Protector Fixing Plate	1	KA313,d145	SPCC	
17	053-000-01	Motor Protector 230V-60Hz(USA)	1	KA313-GBTL103	(T.C)	
	053-000-10	Motor Protector 460V-60Hz(USA)	1	KA311-DPXL78	(T.C)	
18	143-126-12	Pan Screw (w/Spring Washer/Plain Washer)	2	M4x12	SWRM	
19	055-000-71	Rotor	1Set			
20	140-000-23	Hex.Bolt (w/Spring Washer)	2	M5x10	SWRM	
21	062-187-17	Bearing Fixing Washer	2	d5.5xd18x2.3t	SPC	
22	052-108-13	Bearing	1	6305ZZC3		
23	140-076-17	Hex.Bolt	3	M10x30	SUS304	
24	142-164-19	Spring Washer	3	M10	SUS304	
25	060-000-72	Bearing Housing	1		FC	
26	121-247-12	Packing	2	d12.3xd18x2t	PE	
27	035-113-18	Oil Plug	2	M12x14	SUS304	
28	147-038-18	Impeller Key	1	5x5x15.5L	SUS420	
29	140-085-19	Hex.Bolt	3	M10x70	SUS304	
30	142-164-19	Spring Washer	3	M10	SUS304	
31	025-192-10	Mechanical Seal	1	H-20	SIC	
32	143-070-23	Pan Screw	2	M5x6	SWRM	
33	030-144-13	Oil Lifter	1	H-20(A)(T)	Resin	
34	143-070-10	Pan Screw	2	M5x6	SWRM	
35	030-153-15	Seal Stopper	1	H-20(A)	SPCC	
36	122-261-15	O-Ring	1	255xd3.8	NBR	
37	018-105-14	Air Passage	1	8/15-TR	FC	
38	026-198-19	Distance Piece	1	8/15-TR	SGP	
39	026-206-11	Oil Seal	1	VC-20356	NBR	
40	019-000-18	Guide Vane	1	32TRN2.75	FC	
41	040-121-15	Impeller Shim		d16.2xd26x0.3t	SUS304	



PARTS LIST		SUBMERSIBLE AERATORS			8/20/2012	
ITEM	PART No.	DESCRIPTION	QTY	SIZE	MATERIAL	NOTES

## EXPLODED VIEW

32TRN2.75-62



C-00943-1