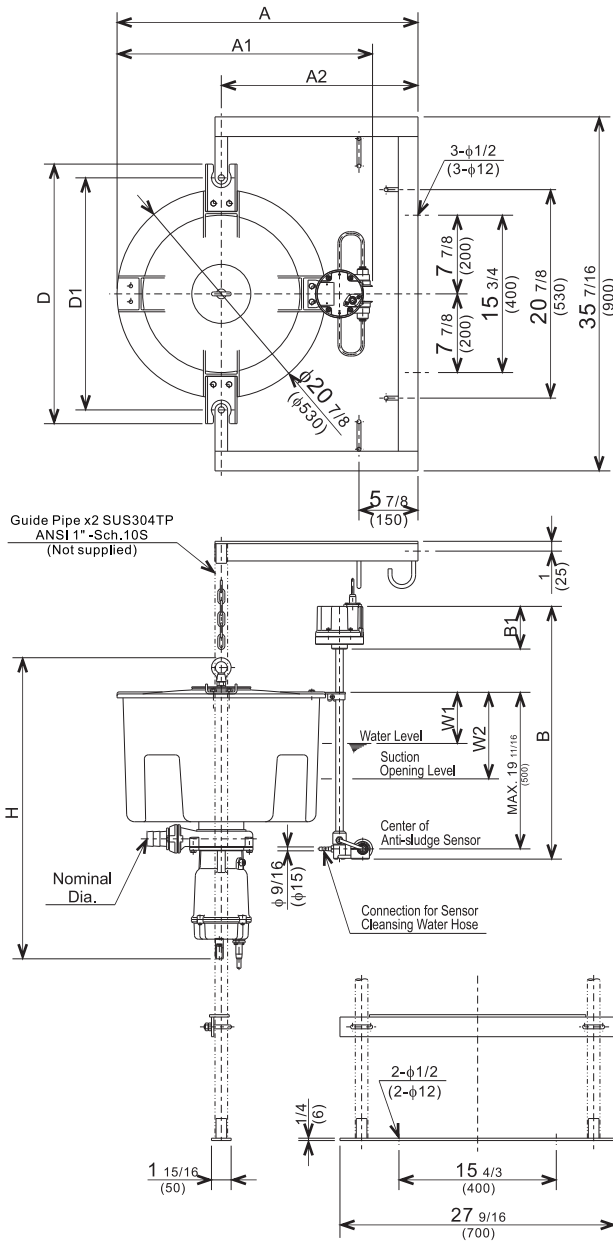




# FHP - SERIES FLOATING - DECANTER PUMP

## DIMENSIONS

**FHP4-3K  
FHP3-3TK  
FHP3-4K  
FHP2-4TK**



**DIMENSIONS:USCS (Inch)**

Model	HP	Nominal Dia.	Pump & Motor								Water Level		*Wt. (lbs.)
			A	A1	A2	B	B1	D	D1	H	W1	W2	
FHP4-3K	1/3	1.5"	30 1/8	25 9/16	19 11/16	25 5/16	4 5/16	26	23 1/4	31 7/16	5 1/8	8 5/8	64
FHP3-3TK	1/3	1.5"	30 1/8	25 9/16	19 11/16	25 5/16	4 5/16	26	23 1/4	30 3/16	5 1/8	8 5/8	60
FHP3-4K	1/2	2"	30 1/8	25 9/16	19 11/16	25 5/16	4 5/16	26	23 1/4	31 7/16	5 1/8	8 5/8	64
FHP2-4TK	1/2	2"	30 1/8	25 9/16	19 11/16	25 5/16	4 5/16	26	23 1/4	30 3/16	5 1/8	8 5/8	60

\*Excluding Cable & Guide Rail System

**DIMENSIONS:METRIC (mm)**

Model	kW	Nominal Dia.	Pump & Motor								Water Level		*Wt. (kg)
			A	A1	A2	B	B1	D	D1	H	W1	W2	
FHP4-3K	0.25	40	765	650	500	643	109	660	590	799	130	220	29
FHP3-3TK	0.25	40	765	650	500	643	109	660	590	766	130	220	27
FHP3-4K	0.4	50	765	650	500	643	109	660	590	799	130	220	29
FHP2-4TK	0.4	50	765	650	500	643	109	660	590	766	130	220	27