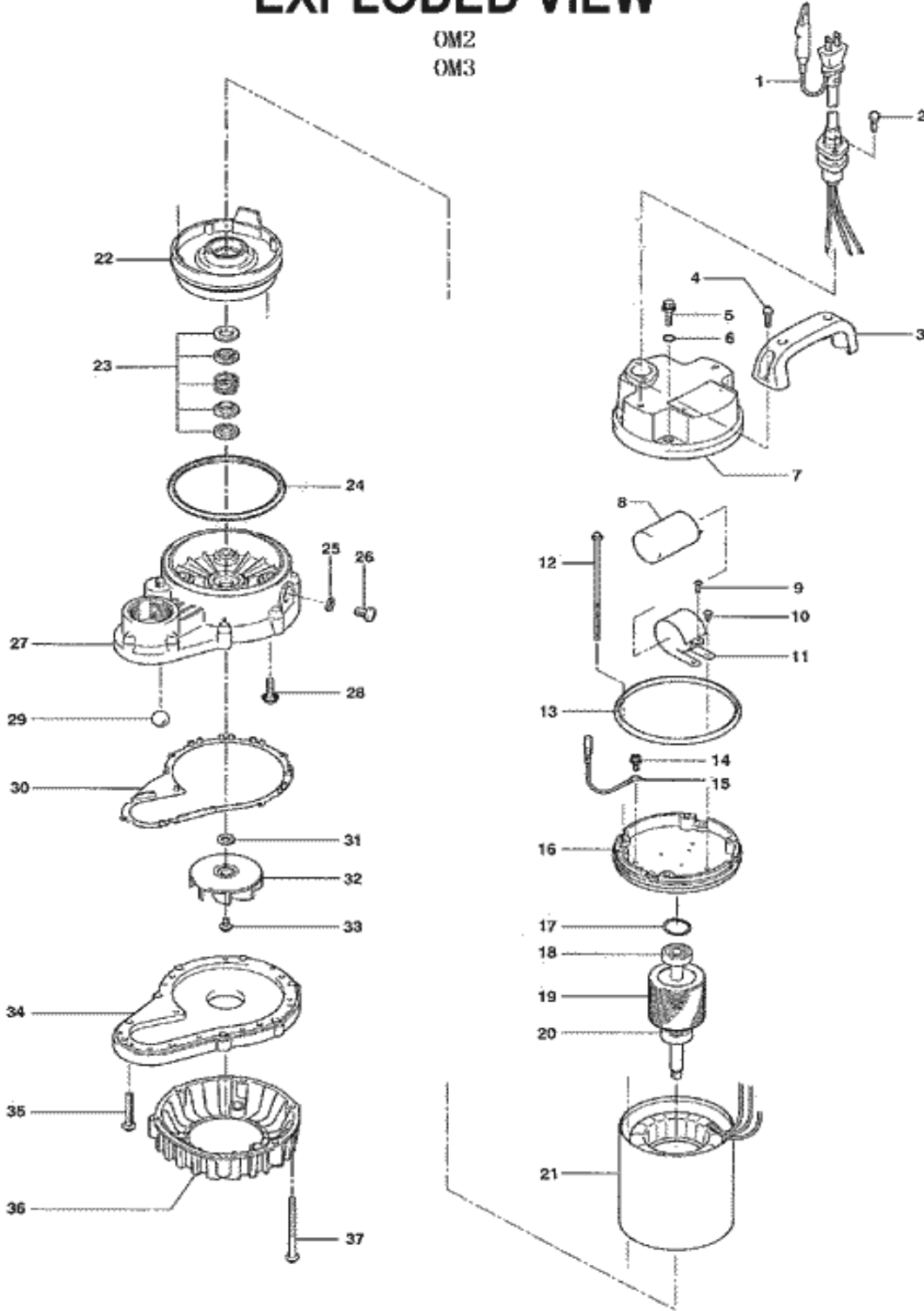


PARTS LIST		CONTRACTOR PUMPS			Date: 5/30/2012	
ITEM	PART No.	DESCRIPTION	QTY	SIZE	MATERIAL	NOTES
1	001-003-91	Cabyre Cable Set (10m)110V-50Hz(EUR)	1	H07RN3Cx1mm2	TF-11	
	001-002-38	Cabyre Cable Set (3m)110V-60Hz	1	VCT3Cx0.75mm2	TF-8	
	001-002-40	Cabyre Cable Set (3m)220/230/240V-50Hz	1	GTCE3Cx0.75mm2(CEE)	TF-6	
	001-002-38	Cabyre Cable Set (3m)220/230/240V-50Hz(THA)	1	VCT3Cx0.75mm2	TF-8	
	001-350-14	Cabyre Cable Set (10m)220/230/240V-50Hz(EUR)	1	H07RN3Cx1mm2(CEE-W/PLUG)	F-11	
2	143-146-18	Tapping Screw (w/Plain Washer)	2	M5x20	SUS304	
3	068-000-19	Handle	1		Resin	
4	143-146-18	Tapping Screw (w/Plain Washer)	2	M5x20	SUS304	
5	140-000-34	Hex.Bolt (w/Spring/Plain Washer)	4	M5x25(14L)	SUS304	
6	122-003-17	O-Ring	4	P-5(4.8xd1.9)	NBR	
7	051-000-14	Motor Head Cover	1		Resin	
8	076-000-24	Capacitor 110V-50Hz(EUR)	1	28MF-220VAC		
	076-000-24	Capacitor 110V-60Hz	1	28MF-220VAC		
	076-000-24	Capacitor 220/230/240V-50Hz	1	28MF-220VAC		
	076-000-24	Capacitor 220/230/240V-50Hz(THA)	1	28MF-220VAC		
	076-000-24	Capacitor 220/230/240V-50Hz(EUR)	1	28MF-220VAC		
9	143-000-22	Tapping Screw	1	M3x10	SWCH	
10	143-086-22	Pan Screw (w/Spring Washer)	2	M4x8	SWRM	
11	127-000-23	Capacitor Fixing Plate	1		SPCC	
12	143-000-21	Pan Screw	4	M4x115(30L)	SS	
13	121-001-06	Packing	1	d110.5xd115.5x4.5t	NBR	
14	140-452-11	Hex.Bolt (w/Spring/Plain Washer)	1	M4x8	C3604	
15	009-000-46	Earth Terminal	1Set	1.25mm2x175L		
16	050-000-34	Motor Bracket	1		ADC	
17	142-388-11	Wave Washer	2	6201(D=30.6)	S65CM	
18	052-100-15	Bearing	1	6201ZZC3		
19	055-002-17	Rotor	1Set	w/Bearing		
20	052-100-15	Bearing	1	6201ZZC3		
21	056-002-19	Stator (w/M.Frame)110V-50Hz(EUR)	1Set	w/Miniature Protector		
	056-002-19	Stator (w/M.Frame)110V-60Hz	1Set	w/Miniature Protector		
	056-002-21	Stator (w/M.Frame)220/230/240V-50Hz	1Set	w/Miniature Protector		
	056-002-21	Stator (w/M.Frame)220/230/240V-50Hz(THA)	1Set	w/Miniature Protector		
	056-002-21	Stator (w/M.Frame)220/230/240V-50Hz(EUR)	1Set	w/Miniature Protector		
22	060-001-18	Bearing Housing	1		ADC	
23	025-000-42	Mechanical Seal	1	D-12RC	SSIC	
24	121-001-11	Packing	1	40PU2.15-52/62	NBR	
25	121-246-11	Packing	1	d10.3xd16x2t	PE	
26	035-127-15	Oil Plug	1	M10x15	SUS304	
27	020-001-22	Pump Casing (Upper)	1	OM(A)2	Resin	
28	143-000-26	Truss Screw (w/O-Ring)	4	M6x20(P-5,NBR)	SUS304	
29	203-065-11	Valve	1	d17	Glass	
30	121-000-48	Packing	1	OM(A)2	NBR	
31	142-390-16	Conical Spring Washer	1	d9.2xd18x0.7t	SUS304	
32	021-004-71	Impeller (50Hz)	1	OM3	Resin	

PARTS LIST		CONTRACTOR PUMPS				Date: 5/30/2012
ITEM	PART No.	DESCRIPTION	QTY	SIZE	MATERIAL	NOTES

EXPLODED VIEW

OM2
OM3



C-00000-1