



MODEL LH8110-69

PARTS LIST		CONTRACTOR PUMPS		4/8/2013		
Item No.	Parts No.	Description	QTY	Specification	Material	Notes
1	011-101-19	Shackle	2	6mm	SS	
2	095-100-18	Chain	2	d5(9-Link)	SS	
3	010-103-21	Cable Clip	4	No.4	SPC	
4	140-074-15	Hex.Bolt	6	M10x20	SUS304	
5	141-006-19	Hex.Nut	6	M10	SUS304	
6	009-116-10	Terminal	3	R-2-4	CU	
7	009-113-17	Terminal	6	R-38-10	CU	
8	009-168-17	Terminal	1	R-22-S6	CU	
9	010-129-10	Cable Clip Rubber	2	115x100x4t	NBR	
10	140-056-11	Hex.Bolt	8	M8x30	SUS304	
11	141-005-18	Hex.Nut	8	M8(B=12)	SUS304	
12	003-106-19	Gland	2	No.5	FC	
13	004-113-12	Cable Bush	2	No.12	SBR	
14	006-103-28	Stuffing Box	2	No.5	FC	
15	140-076-17	Hex.Bolt	8	M10x30	SUS304	
16	142-164-19	Spring Washer	8	M10	SUS304	
17	122-264-18	O-Ring	2	140xd3.5	NBR	*
18	001-130-16	Cabtyre Cable	1	Cable AWG1 x 3 x 65' LH6(8)110	(Vm)	
19	001-140-19	Cabtyre Cable	1	Cable AWG1 x 7 x 65' LH6(8)110	(Vm)	
20	008-105-13	Mould Cover	2	No.3	NBR	
21	003-149-14	Gland (Lower)	2	No.5	FC	
22	142-162-33	Spring Washer	8	M6	SUS304	
23	140-033-12	Hex.Bolt	8	M6x16	SUS304	
24	141-004-33	Hex.Nut	6	M6	C3604	
25	009-108-19	Terminal	6	R-38-6	CU	
26	009-108-19	Terminal	6	R-38-6	CU	
27	140-029-15	Hex.Bolt	6	M6x10	C3604	
28	002-115-18	Heat Shrink Tube	1	40"	(Vm)	
29	002-116-19	Heat Shrink Tube	1	40"	(Vm)	
30	143-042-13	Pan Screw	1	M6x8	SWRM	
31	009-168-17	Terminal	1	R-22-S6	CU	
32	009-114-18	Connector	3	PC-4020M		
33	009-115-19	Connector	3	PC-4020F		
34	127-000-21	Stay	1	LH890/8110	SS	
35	140-125-12	Hex.Bolt	2	M16x45	SUS304	
36	142-166-11	Spring Washer	2	M16	SUS304	
37	142-130-16	Plain Washer	2	M16	SUS304	
38	142-000-29	Washer		0.8/1.2/2.3	SS	
39	142-165-10	Spring Washer	2	M12	SUS304	
40	140-099-16	Hex.Bolt	2	M12x40	SUS304	
41	140-099-16	Hex.Bolt	10	M12x40	SUS304	
42	142-165-10	Spring Washer	10	M12	SUS304	
43	037-000-57	Flanged Discharge Pipe	1	200mm(GH-370L)	FCD	
44	121-145-19	Packing	1	GH-370	NBR	*
45	140-072-13	Hex.Bolt	3	M10x15	SUS304	
46	142-164-19	Spring Washer	3	M10	SUS304	
47	217-000-23	Fixing Plate	1		SS	
48	016-000-05	Protection Bush	1		NBR	
49	140-033-12	Hex.Bolt	2	M6x16	SUS304	
50	214-000-08	Blind Cover	1		SS	
51	121-001-24	Packing	1		NBR	*
52	148-000-01	Grease Nipple	1	A-PT1/4	SUS304	
53	016-000-06	Protection Bush	1		NBR	
54	072-129-12	Eye Bolt	2	M42	SF	
55	035-102-30	Air Tightness Test Plug	1	M12x16(B=21)	SUS304	
56	122-259-10	O-Ring	1	12xd3	NBR	*
57	140-000-74	Hex.Bolt	8	M16x105	SUS304	
58	142-166-11	Spring Washer	8	M16	SUS304	
59	142-130-16	Plain Washer	8	M16	SUS304	
60	121-001-25	Seal Packing	8	d16xd26x4t	NBR	*
61	050-000-84	Motor Bracket	1		FC	
62	146-034-11	Retaining Ring	1	C60	SK5	
63	052-148-15	Bearing	1	NU-312A		
64	026-273-19	Oil Seal	1	SC-8010513	NBR	
65	113-000-06	Greese Pan Gray Iron Casting	1		FC	



MODEL **LH8110-69**

PARTS LIST		CONTRACTOR PUMPS		4/8/2013		
Item No.	Parts No.	Description	QTY	Specification	Material	Notes
66	142-163-18	Spring Washer	4	M8	SWRH	
67	140-055-10	Hex.Bolt	4	M8x25	SWRM	
68	122-000-22	O-Ring	1	V-530(524.5xd10)	NBR	*
69	065-000-54	Outer Cover	1		SS	
70	122-000-22	O-Ring	1	V-530(524.5xd10)	NBR	*
71	055-002-19	Rotor & Shaft	1Set			
72	147-000-43	Impeller Key	1	12x8x56	SUS304	
73	053-306-16	Motor Protector	3	9700K-06-215	(H)	
74	056-006-41	Stator 460V-60Hz	1Set			
74	056-006-42	Stator 575V-60Hz	1Set			
75	122-000-46	O-Ring	1	AN384(391.05xd5.34)	NBR	*
76	064-001-01	Motor Frame	1		FC	
77	140-132-12	Hex.Bolt	8	M16x80	SUS304	
78	142-166-11	Seal Washer	8	M16	SUS304	
79	122-000-46	O-Ring	1	AN384(391.05xd5.34)	NBR	*
80	121-001-26	Packing	1	6x6.5x254L		*
81	062-000-17	Bearing Cover	1		FC	
82	140-076-33	Hex.Bolt	4	M10x30	SWRM	
83	142-164-35	Spring Washer	4	M10	SWRH	
84	061-000-06	Bearing Collar	1		SS	
85	052-000-60	Bearing	1Set	7313ADB		
86	141-078-12	Bearing Nut	1	AN13	SUS304	
87	142-246-16	Bearing Washer	1	AW13	SUS304	
88	060-001-27	Bearing Housing	1		FC	
89	122-259-10	O-Ring	1	12xd3	NBR	*
90	035-102-30	Oil Plug	1	M12x16(B=21)	SUS304	
91	122-259-10	O-Ring	2	12xd3	NBR	*
92	035-102-30	Oil Plug	2	M12x16(B=21)	SUS304	
93	122-016-13	O-Ring	8	P-16(15.8xd2.4)	NBR	*
94	144-439-14	Stud Bolt	8	M16x60(28/20)	SUS304	
95	090-122-11	Leakage Sensor(Electrode)	1Set	d9x43L	SUS	
96	142-161-32	Spring Washer	2	M5	SWRH	
97	140-021-33	Hex.Bolt	2	M5x20	SWRM	
98	026-274-10	Oil Seal	1	SC-507212	NBR	
99	071-000-43	Spacer	3		SS	
100	122-000-47	O-Ring	1	AN372(232.3xd5.34)	NBR	*
101	113-000-07	Greese Pan Gray Iron Casting	1		FC	
102	142-164-35	Spring Washer	4	M10	SWRH	
103	140-076-33	Hex.Bolt	4	M10x30	SWRM	
104	025-268-18	Mechanical Seal	1	H-50T	SIC	
105	143-028-13	Pan Screw	3	M5x10	SWRM	
106	030-133-19	Oil Lifter	1	H-50(T)	SPCC	
107	122-270-17	O-Ring	1	350xd5.7	NBR	*
108	029-174-21	Oil Casing	1	GH-1100	FC	
109	122-270-17	O-Ring	1	350xd5.7	NBR	*
110	142-165-10	Spring Washer	8	M12	SUS304	
111	140-097-14	Hex.Bolt	8	M12x30	SUS304	
112	071-142-18	Shaft Sleeve (Upper)	1	GH-550/750	SUS403	
113	071-153-12	Shaft Sleeve (Lower)	1	d45xd49x57.5L	SUS403	
114	122-271-18	O-Ring	1	540xd5.7	NBR	*
115	020-930-13	Pump Casing (Upper)(60Hz)	1	LH8110-60	FCD	
116	144-435-36	Stud Bolt	8	M16x40(28/32)	SUS304	
117	142-166-11	Spring Washer	8	M16	SUS304	
118	141-008-11	Hex.Nut	8	M16	SUS304	
119	122-226-18	O-Ring	2	S-75(74.5xd2.0)	NBR	*
120	026-211-19	Labyrinth Ring	1	d55.5xd78x47L	SUS403	
121	040-127-11	Impeller Shim		d45.2xd68x0.3t	SUS304	
122	021-G53-12	Impeller (60Hz)	1	LH8110-69	HICRFC	
123	142-274-13	Impeller Fixing Washer	1	d33xd75x6t	SUS304	
124	141-012-50	Hex.Nut	1	M30(H=18)	SUS304	
125	141-036-18	Hex.Cap Nut	1	M30	SUS304	
126	020-931-14	Pump Casing (Lower)(60Hz)	1	LH890/8110-60	FC	
127	142-166-11	Spring Washer	8	M16	SUS304	
128	141-008-11	Hex.Nut	8	M16	SUS304	
129	140-103-30	Hex.Bolt	4	M12x60	SUS304	



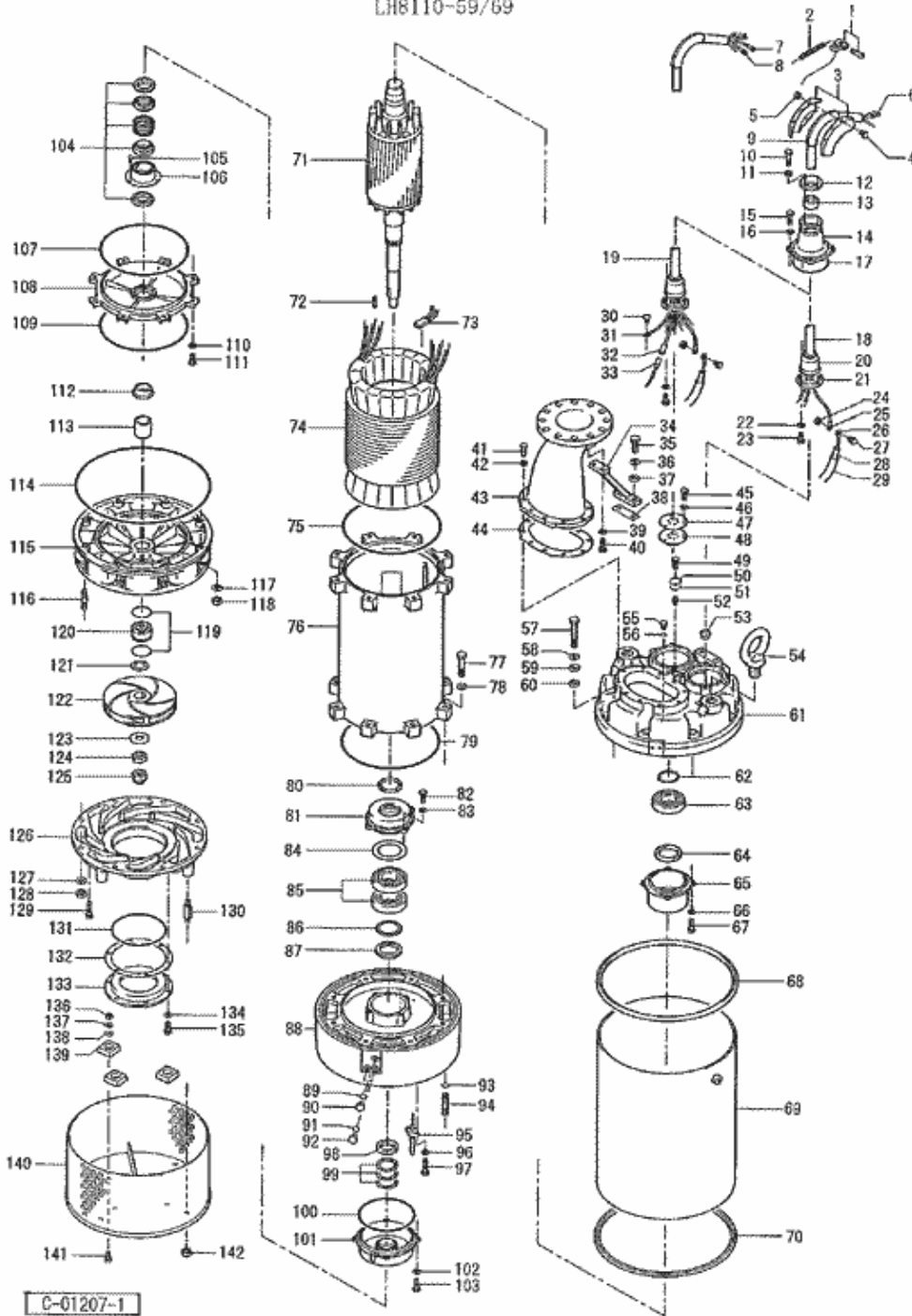
MODEL **LH8110-69**

PARTS LIST		CONTRACTOR PUMPS		4/8/2013		
Item No.	Parts No.	Description	QTY	Specification	Material	Notes
130	144-128-17	Stud Bolt	4	M16x110(24/24)	SUS403	
131	122-302-19	O-Ring	1	215xd3.8	NBR	*
132	120-118-10	Packing (S.Cover)		d211xd274x0.5t	PE	
133	034-423-11	Suction Mouth	1	GH-890	HICRFC	
134	142-165-10	Spring Washer	6	M12	SUS304	
135	140-098-15	Hex.Bolt	6	M12x35	SUS304	
136	141-007-10	Hex.Nut	3	M12	SUS304	
137	142-165-10	Spring Washer	3	M12	SUS304	
138	142-129-25	Plain Washer	3	M12	SUS304	
139	043-102-19	Cathodic Protection Plate	3	AB-1HS(75x70x20t)	Al	
140	023-448-18	Strainer Stand	1	LH890/8110用	SPC	
141	140-097-14	Hex.Bolt	3	M12x30	SUS304	
142	141-008-11	Hex.Nut	4	M16	SUS304	
		<for USA>				
	048-000-52	Screwed Flange	1	JIS10K(NPT-8)	FC	
	140-175-17	Hex.Bolt	12	M22x85	SUS304	
	141-010-16	Hex.Nut	12	M22	SUS304	
	142-169-14	Spring Washer	12	M22	SUS304	
	121-109-24	Packing	1	JIS10Kx200mm	NR	
		<Packing O-Ring Set>				
	173-002-56	Packing O-Ring Set	1Set	(Marked by *) ⇒		
17	122-264-18	O-Ring (Stuffing Box)	2	140xd3.5	NBR	*
44	121-145-19	Packing (Discharge Pipe)	1	GH-370	NBR	*
51	121-001-24	Packing (Blind Cover)	1		NBR	*
56	122-259-10	O-Ring (Air Tightness Test Plug)	1	12xd3	NBR	*
60	121-001-25	Seal Packing (Motor Bracket Bolt)	8	d16xd26x4t	NBR	*
68	122-000-22	O-Ring (M.Bracket/Outer Cover)	1	V-530(524.5xd10)	NBR	*
70	122-000-22	O-Ring (Outer Cover/Motor Frame)	1	V-530(524.5xd10)	NBR	*
75	122-000-46	O-Ring (M.Bracket/Motor Frame)	1	AN384(391.05xd5.34)	NBR	*
79	122-000-46	O-Ring (Motor Frame/Brg.Housing)	1	AN384(391.05xd5.34)	NBR	*
80	121-001-26	Packing (Bearing Collar)	1	6x6.5x254L		*
89	122-259-10	O-Ring (Oil Plug)	1	12xd3	NBR	*
91	122-259-10	O-Ring (Oil Plug)	2	12xd3	NBR	*
93	122-016-13	O-Ring (Upp. P.Casing Bolt)	8	P-16(15.8xd2.4)	NBR	*
100	122-000-47	O-Ring (Brg.Housing/Greese Pan)	1	AN372(232.3xd5.34)	NBR	*
107	122-270-17	O-Ring (Brg.Housing/O.Casing)	1	350xd5.7	NBR	*
109	122-270-17	O-Ring (O.Casing/Upp.Casing)	1	350xd5.7	NBR	*
114	122-271-18	O-Ring (Brg.Housing/Upp..Casing)	1	540xd5.7	NBR	*
119	122-226-18	O-Ring (Labyrinth Ring)	2	S-75(74.5xd2.0)	NBR	*
131	122-302-19	O-Ring (Mouth Ring/Low. P.Casing)	1	215xd3.8	NBR	*
		Lubricant		Turbine Oil VG32 8,000ml		

PARTS LIST		CONTRACTOR PUMPS		4/8/2013		
Item No.	Parts No.	Description	QTY	Specification	Material	Notes

EXPLODED VIEW

LH8110-59/69



C-01207-1