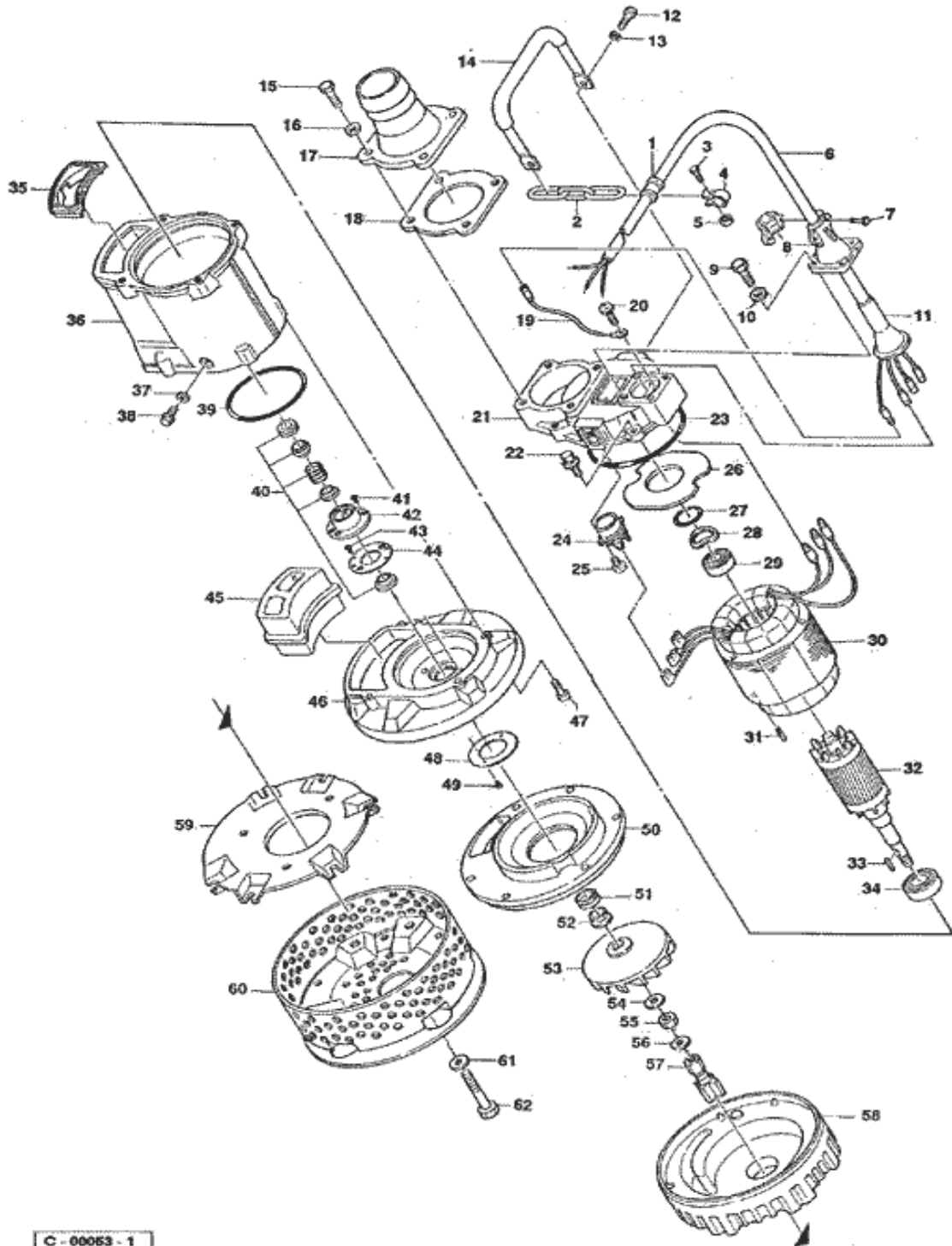


PARTS LIST		CONTRACTOR PUMPS			6/20/2012	
ITEM	PART No.	DESCRIPTION	QTY	SIZE	MATERIAL	NOTES
1	010-124-15	Cable Clip Rubber	1	No.3	NBR	
	010-151-11	Cable Clip Rubber (for EUR)	1	No.4	NBR	
2	095-131-18	Chain	1	4mm(3L)	SS	
3	140-032-37	Hex.Bolt	1	M6x15	SWRM	
4	010-120-18	Cable Clip	1	No.2-1	SPC	
5	141-004-33	Hex.Nut	1	M6	S35C	
6	001-481-15	Cabtyre Cable Set (8m) 220V-60Hz	1	2PNCTF4Cx2mm2	KTV	
	001-481-15	Cabtyre Cable Set (8m) 380V-50Hz	1	2PNCTF4Cx2mm2	KTV	
	001-481-15	Cabtyre Cable Set (8m) 400/415V-50Hz	1	2PNCTF4Cx2mm2	KTV	
	001-004-97	Cabtyre Cable Set (20m) 400/415V-50Hz(EUR)	1	H07RN4Cx1.5mm2(CEE.Gray)	KT(HAR)	
7	140-033-12	Hex.Bolt	2	M6x16	SUS304	
8	003-122-24	Stuffing Box	1	No.1-1(w/Clamp)	ADC	
9	140-418-15	Hex.Bolt	4	M8x25(B=12)	SUS304	
10	142-210-11	Plain Washer	4	d8.6xd13.4x1t	SUS304	
11	008-133-10	Mould Cover	1	No.1-9	CR	
	008-129-26	Mould Cover (for EUR)	1	No.1-8	CR	
12	140-074-15	Hex.Bolt	2	M10x20	SUS304	
13	142-164-19	Spring Washer	2	M10	SUS304	
14	068-000-20	Handle	1	KTV2-37	SGP+NBR	
15	140-076-17	Hex.Bolt	4	M10x30	SUS304	
16	142-128-24	Plain Washer	4	M10	SPC	
17	032-118-27	Hose Coupling	1	80mm(GH)	ADC	
17	032-437-12	Hose Coupling (for EUR)	1	KTV(BSPT-3)	FC	
18	121-141-15	Packing	1	KRB-3/4	NBR	
19		Earth Terminal	1Set	2mm2		
20	143-085-34	Pan Screw (w/Spring Washer)	1	M4x6	C3604	
21	050-403-15	Motor Bracket	1		ADC	
22	140-433-16	Hex.Bolt (w/Spring Washer/Plain Washer)	4	M10x35	SUS304	
23	122-298-11	O-Ring	1	160xd3.8	NBR	
24	053-449-12	Motor Protector 220V-60Hz	1	KA313-GAZL110	(H)	
	053-437-17	Motor Protector 380V-50Hz	1	KA313-GDZL103	(H)	
	053-438-18	Motor Protector 400/415V-50Hz	1	KA313-GCXL103	(H)	
	053-438-18	Motor Protector 400/415V-50Hz(EUR)	1	KA313-GCXL103	(H)	
25	143-136-15	Truss Screw	2	M4x10	SWRM	
26	058-117-13	Lead Wire Protection Plate	1	d70xd140x1.6t	Bakelite	
27	122-367-12	O-Ring	1	52xd3.1	NBR	
28	142-196-10	Wave Washer	1	6205/6304	SK5	
29	052-107-12	Bearing	1	6304ZC3		
30	056-668-18	Stator 220V-60Hz	1Set			
	056-725-14	Stator 380V-50Hz	1Set			
	056-726-15	Stator 400/415V-50Hz	1Set			
	056-726-15	Stator 400/415V-50Hz(EUR)	1Set			
31	145-029-10	Stator Set Pin	1	d8x30	S45C	
32	055-667-14	Rotor	1Set	w/Bearing		

PARTS LIST		CONTRACTOR PUMPS			6/20/2012	
ITEM	PART No.	DESCRIPTION	QTY	SIZE	MATERIAL	NOTES
33	147-129-17	Impeller Key	1	5x5x22l	SUS403	
34	052-109-14	Bearing	1	6306ZZC3		
35	121-449-16	Packing (Water Way, Upp.)	1	KTV2-37	NBR	
36	064-000-80	Motor Frame	1		ADC	
37	121-246-11	Packing	1	d10.3xd16x2t	PE	
38	035-125-13	Oil Plug	1	M10x20(B=13)	SUS304	
39	122-139-13	O-Ring	1	G-140(139.4xd3.1)	NBR	
40	025-255-12	Mechanical Seal	1	H-25T	SiC	
41	143-070-23	Pan Screw	2	M5x6	SWRM	
42	030-143-12	Oil Lifter	1	H-25(A)(T)	Resin	
43	143-070-10	Pan Screw	2	M5x6	SWRM	
44	030-152-14	Seal Stopper	1	H-25(A)(T)	SPCC	
45	121-001-03	Packing (Water Way, Low.)	1	KTV2-37	SBR	
46	029-000-78	Oil Casing	1	KTV2-37	ADC	
47	140-288-14	Hex.Socket Cap Bolt	4	M10x35	SUS304	
56	142-166-11	Spring Washer	1	M16	SUS304	
48	058-000-08	Protection Plate	1	d49xd85x3t	SUS304	
49	143-166-14	Flat Screw	2	M4x8	SUS304	
50	031-000-09	Wear Ring	1	KTV2-37	BR+NR	
51	122-444-14	V-Ring	1	VR-25	NBR	
52	071-298-10	Shaft Sleeve	1	d20xd25x9l	SUS304	
53	021F8017	Impeller (50Hz)	1	50Hz	HiCrFC	
53	021F8118	Impeller (60Hz)	1	60Hz	HiCrFC	
54	142-130-29	Plain Washer	1	M16	SPC	
55	141-008-40	Hex.Nut	1	M16(H=10)	SUS304	
57	024-154-17	Stirrer	1	KTV2-80	FCD	
58	020-000-36	Pump Casing	1	KTV2-37	BR+NR	
59	127-250-16	Fixing Plate	1	KTV2-37	SPCC	
60	023-435-12	Strainer Stand	1	KTV2-80	SPCC+SGP	
61	142-128-24	Plain Washer	6	M10	SPC	
62	140-091-18	Hex.Bolt	6	M10x100	SUS304	
		<Packing O-Ring Set>				
	173-473-10	Packing O-Ring Set	1Set	(Marked by *)		
18	121-141-15	Packing (Hose Coupling)	1	KRB-3/4	NBR	
23	122-298-11	O-Ring (M.Bracket/M.Frame)	1	160xd3.8	NBR	
27	122-367-12	O-Ring (Upp. Bearing)	1	52xd3.1	NBR	
35	121-449-16	Packing (Water Way, Upp.)	1	KTV2-37	NBR	
37	121-246-11	Packing (Oil Plug)	1	d10.3xd16x2t	PE	
39	122-139-13	O-Ring (M.Frame/O.Casing)	1	G-140(139.4xd3.1)	NBR	
45	121-001-03	Packing (Water Way, Low.)	1	KTV2-37	SBR	
		Lubricant		Turbine Oil VG32 400ml		

PARTS LIST		CONTRACTOR PUMPS			6/20/2012	
ITEM	PART No.	DESCRIPTION	QTY	SIZE	MATERIAL	NOTES

EXPLODED VIEW KTV2 - 80



C - 00053 - 1