

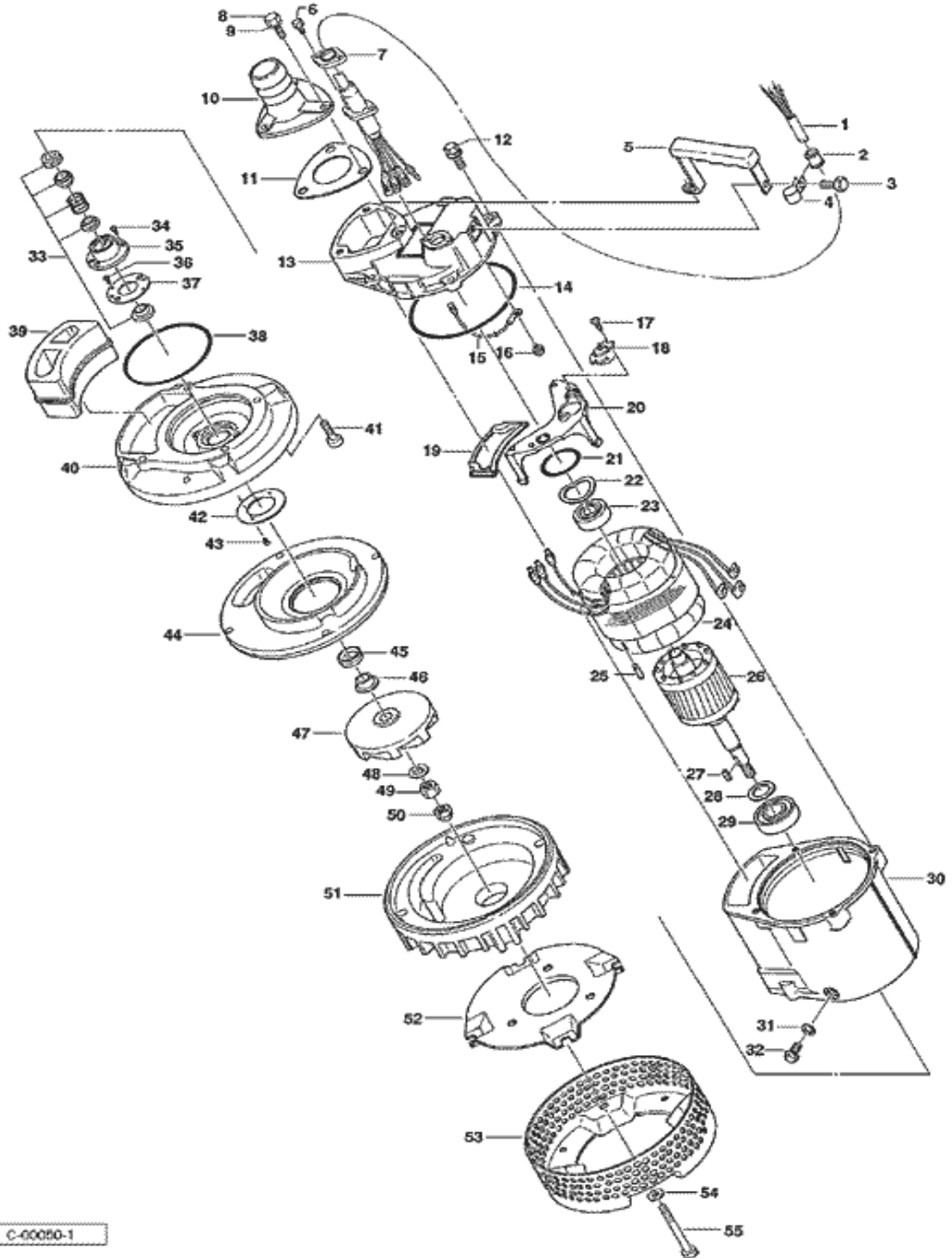
PARTS LIST		CONTRACTOR PUMPS			12/4/2012	
ITEM	PART No.	DESCRIPTION	QTY	SIZE	MATERIAL	NOTES
1	001-177-28	Cabtyre Cable Set (8m) 220V-60Hz	1	VCT4Cx1.25mm2	LBT	
	001-177-28	Cabtyre Cable Set (8m) 380/400/415V-50Hz	1	VCT4Cx1.25mm2	LBT	
	001-004-88	Cabtyre Cable Set (20m) 380/400/415V-50Hz(EUR)	1	H07RN4Cx1.5mm2(CEE.Gray)	LBT(HAR)	
2	010-126-17	Cable Clip Rubber	1	HS2	NBR	
3	140-487-15	Hex.Bolt (w/plain washer)	1	M8x20	SUS304	
4	010-130-14	Cable Clip	1	HK2-4/15	SPC	
5	068-248-15	Handle	1	KTV2-15/22	SPC+NBR	
6	140-427-17	Hex.Bolt (w/Plain Washer)	2	M5x15	SUS304	
7	003-190-10	Gland	1		SUS316	
8	140-056-11	Hex.Bolt	3	M8x30	SUS304	
9	142-210-11	Plain Washer	3	d8.6xd13.4x1t	SUS304	
10	032-356-16	Hose Coupling	1	50mm(KTV2)	ADC	
10	032-000-45	Hose Coupling (for EUR)	1	KTV2-15(BSPT-2)	FC	
11	121-001-09	Packing	1	KTV2-15/22	NBR	
12	140-432-15	Hex.Bolt (w/Spring Washer/Plain Washer)	4	M8x30	SUS304	
13	050-000-45	Motor Bracket	1		ADC	
14	122-473-12	O-Ring	1	150xd3.3	NBR	
15		Earth Terminal	1Set	1.25mm2x115l		
16	143-085-34	Pan Screw (w/Spring Washer)	1	M4x6	C3604	
17	143-138-17	Truss Tapping Screw	2	M4x12	SWCH	
18	053-407-18	Motor Protector 220V-60Hz	1	KA313-GDXL103	(T)	
	053-411-15	Motor Protector 380/400/415V-50Hz	1	KA313-GQXL104	(T)	
	053-411-15	Motor Protector 380/400/415V-50Hz(EUR)	1	KA313-GQXL104	(T)	
19	121-445-12	Packing (Water Way, Upp.)	1	KTV2-15/22	NBR	
20	058-167-18	Protection Plate	1	KTV2-15/22	Bakelite	
21	122-293-16	O-Ring	1	47xd3.1	NBR	
22	142-195-19	Wave Washer	1	6204/6303(d47x.0.3t)	SK5	
23	052-103-18	Bearing	1	6204ZZC3		
24	056-663-13	Stator 220V-60Hz	1Set			
	056-724-13	Stator 380/400/415V-50Hz	1Set			
	056-724-13	Stator 380/400/415V-50Hz(EUR)	1Set			
25	145-028-19	Stator Set Pin	1	d6x32	S45C	
26	055-662-19	Rotor	1Set	w/Bearing		
27	147-128-16	Impeller Key	1	5x5x18.5l	SUS403	
28	061-161-12	Bearing Collar	1	d25.1xd36x1.6t	SPC	
29	052-108-13	Bearing	1	6305ZZC3		
30	064-000-84	Motor Frame	1		ADC	
31	121-246-11	Packing	1	d10.3xd16x2t	PE	
32	035-125-13	Oil Plug	1	M10x20(B=13)	SUS304	
33	025-243-17	Mechanical Seal	1	H-20T	SIC	
34	143-070-23	Pan Screw	2	M5x6	SWRM	
35	030-144-13	Oil Lifter	1	H-20(A)(T)	Resin	
36	143-070-10	Pan Screw	2	M5x6	SWRM	
37	030-155-17	Seal Stopper	1	H-20(KTV2)	SPCC	

PARTS LIST		CONTRACTOR PUMPS			12/4/2012	
ITEM	PART No.	DESCRIPTION	QTY	SIZE	MATERIAL	NOTES
38	122-134-18	O-Ring	1	G-115(114.4xd3.1)	NBR	
39	121-001-04	Packing (Water Way, Low.)	1	KTV2-15/22	SBR	
40	029-000-77	Oil Casing	1	KTV2-15/22	ADC	interchangeable with OLD part#029-408-14
41	140-270-13	Hex.Socket Cap Bolt	4	M8x30	SUS304	
42	058-000-25	Protection Plate	1	d44xd70x3t	SUS304	interchangeable with OLD part#058-000-10
43	143-166-14	Flat Screw	2	M4x8	SUS304	
44	031-000-08	Wear Ring	1	KTV2-15/22	BR+NR	
45	122-443-13	V-Ring	1	VR-20	NBR	
46	071-297-19	Shaft Sleeve	1	d16xd20x10l	SUS304	
47	021F7418	Impeller (50Hz)	1	50Hz	FCD	
47	021F7519	Impeller (60Hz)	1	60Hz	FCD	
48	142-129-25	Plain Washer	1	M12	SPC	
49	141-007-10	Hex.Nut	1	M12	SUS304	
50	141-032-14	Hex.Cap Nut	1	M12	SUS304	
51	020B1918	Pump Casing	1	KTV2-15/22	BR+NR	
52	127-249-12	Fixing Plate	1	KTV2-15/22	SPCC	
53	023-432-19	Strainer Stand	1	KTV2-15/22	SPCC	
54	142-127-23	Plain Washer	4	M8	SPC	
55	140-067-15	Hex.Bolt	4	M8x85	SUS304	
		<Packing O-Ring Set>				
	173-472-19	Packing O-Ring Set	1Set	(Marked by *)		
11	121-001-09	Packing (Hose Coupling)	1	KTV2-15/22	NBR	
14	122-473-12	O-Ring (M.Bracket/M.Frame)	1	150xd3.3	NBR	
19	121-445-12	Packing (Water Way, Upp.)	1	KTV2-15/22	NBR	
21	122-293-16	O-Ring (Upp. Bearing)	1	47xd3.1	NBR	
31	121-246-11	Packing (Oil Plug)	1	d10.3xd16x2t	PE	
38	122-134-18	O-Ring (M.Frame/O.Casing)	1	G-115(114.4xd3.1)	NBR	
39	121-001-04	Packing (Water Way, Low.)	1	KTV2-15/22	SBR	
		Lubricant		Turbine Oil VG32 270ml		

* Indicates items included in set

PARTS LIST		CONTRACTOR PUMPS				12/4/2012
ITEM	PART No.	DESCRIPTION	QTY	SIZE	MATERIAL	NOTES

EXPLODED VIEW KTV2-15/22



C-00050-1