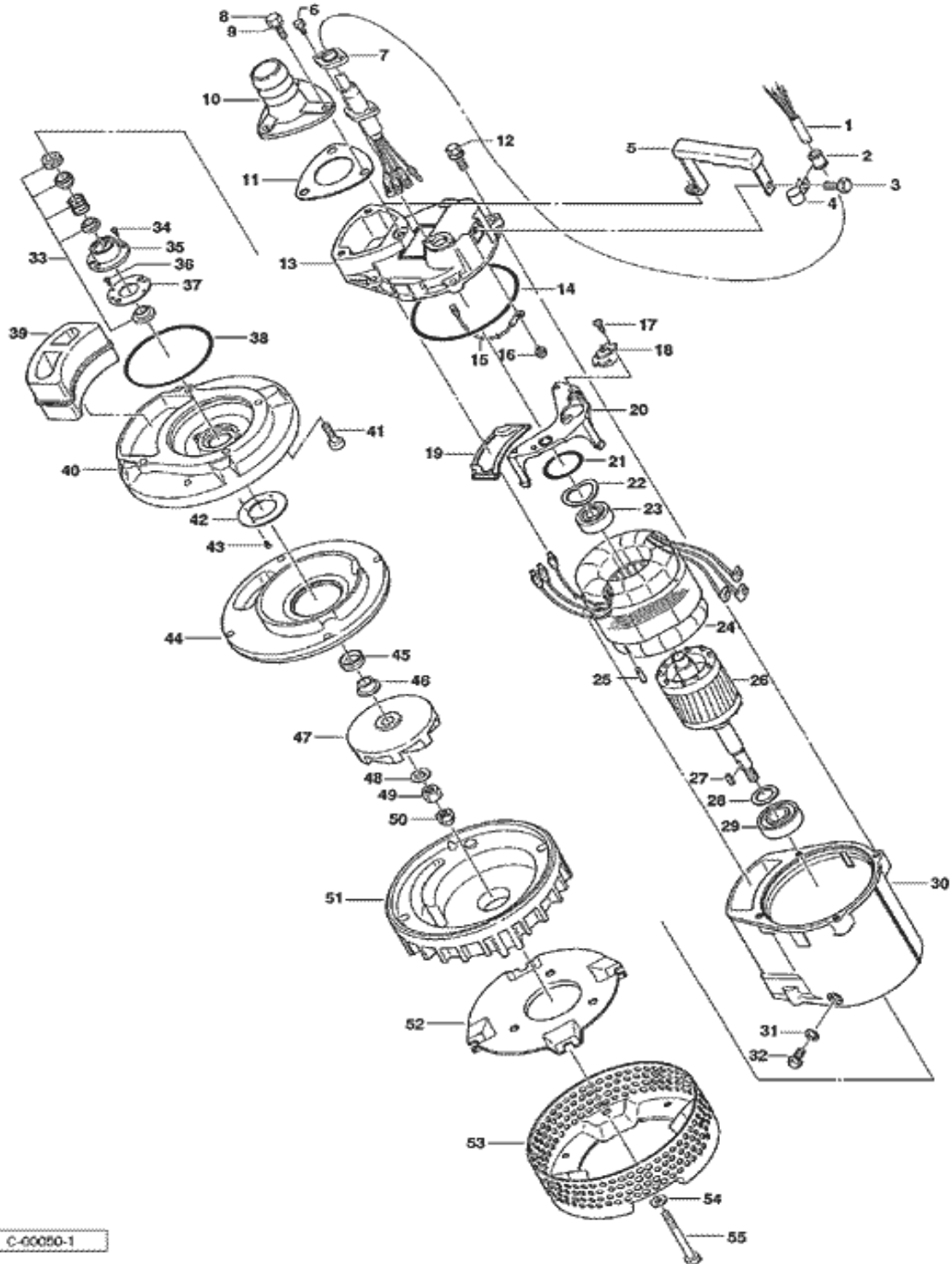


PARTS LIST		CONTRACTOR PUMPS			12/4/2012	
ITEM	PART No.	DESCRIPTION	QTY	SIZE	MATERIAL	NOTES
1	001-803-33	Cabtyre Cable Set (15m) 220V-60Hz(USA)	1	VCT4Cx1.25mm2	LBT	
	001-803-33	Cabtyre Cable Set (15m) 440V-60Hz(USA)	1	VCT4Cx1.25mm2	LBT	
	001-803-33	Cabtyre Cable Set (15m) 575V-60Hz(USA)	1	VCT4Cx1.25mm2	LBT	
2	010-126-17	Cable Clip Rubber	1	HS2	NBR	
3	140-487-15	Hex.Bolt (w/plain washer)	1	M8x20	SUS304	
4	010-130-14	Cable Clip	1	HK2-4/15	SPC	
5	068-248-15	Handle	1	KTV2-15/22	SPC+NBR	
6	140-427-17	Hex.Bolt (w/Plain Washer)	2	M5x15	SUS304	
7	003-190-10	Gland	1		SUS316	
8	140-056-11	Hex.Bolt	3	M8x30	SUS304	
9	142-210-11	Plain Washer	3	d8.6xd13.4x1t	SUS304	
10	032-351-11	Hose Coupling	1	KTV2-15(NPT-2)	FC	
11	121-001-09	Packing	1	KTV2-15/22	NBR	
12	140-432-15	Hex.Bolt (w/Spring Washer/Plain Washer)	4	M8x30	SUS304	
13	050-000-43	Motor Bracket	1		ADC	
14	122-473-12	O-Ring	1	150xd3.3	NBR	
15		Earth Terminal	1Set			
16	143-085-34	Pan Screw (w/Spring Washer)	1	M4x6	C3604	
17	143-138-17	Truss Tapping Screw	2	M4x12	SWCH	
18	053-194-22	Motor Protector 220V-60Hz(USA)	1	KA313-GBXL103	(T)	
	053-272-12	Motor Protector 440V-60Hz(USA)	1	KA311-DAXL78	(T)	
		Motor Protector 575V-60Hz(USA)	1		(T)	
19	121-445-12	Packing (Water Way, Upp.)	1	KTV2-15/22	NBR	
20	058-167-18	Protection Plate	1	KTV2-15/22	Bakelite	
21	122-293-16	O-Ring	1	47xd3.1	NBR	
22	142-195-19	Wave Washer	1	6204/6303(d47x.0.3t)	SK5	
23	052-103-18	Bearing	1	6204ZZC3		
24	056-662-12	Stator 220V-60Hz(USA)	1Set			
	056-722-11	Stator 440V-60Hz(USA)	1Set			
		Stator 575V-60Hz(USA)	1Set			
25	145-028-19	Stator Set Pin	1	d6x32	S45C	
26	055-661-18	Rotor	1Set	w/Bearing		
27	147-128-16	Impeller Key	1	5x5x18.5l	SUS403	
28	061-161-12	Bearing Collar	1	d25.1xd36x1.6t	SPC	
29	052-108-13	Bearing	1	6305ZZC3		
30	064-000-84	Motor Frame	1		ADC	
31	121-246-11	Packing	1	d10.3xd16x2t	PE	
32	035-125-13	Oil Plug	1	M10x20(B=13)	SUS304	
33	025-243-17	Mechanical Seal	1	H-20T	SiC	
34	143-070-23	Pan Screw	2	M5x6	SWRM	
35	030-144-13	Oil Lifter	1	H-20(A)(T)	Resin	
36	143-070-10	Pan Screw	2	M5x6	SWRM	
37	030-155-17	Seal Stopper	1	H-20(KTV2)	SPCC	
38	122-134-18	O-Ring	1	G-115(114.4xd3.1)	NBR	

PARTS LIST		CONTRACTOR PUMPS		12/4/2012		
ITEM	PART No.	DESCRIPTION	QTY	SIZE	MATERIAL	NOTES

EXPLODED VIEW KTV2-15/22



C-0000-1