

PARTS LIST		NON CLOG WASTEWATER PUMP			11/15/2013	
ITEM	PART No.	DESCRIPTION	QTY	SIZE	MATERIAL	NOTES
1	001-149-21	Cabtyre Cable Set (32') 220/440V-60Hz(USA)	1	VCT4Cx2mm2	BE/CE	
2	140-021-17	Hex.Bolt	3	M5x20	SUS304	
3	142-422-18	Seal Washer	3	PM-5	SUS+NBR	
4	003-111-20	Gland	1		SUS304	
5	009-150-16	Terminal	4	8-SD	CU	
6	140-052-17	Hex.Bolt	2	M8x16	SUS304	
7	127-195-12	Protector Fixing Plate	1	22/37-BE2	SUS304	
8	121-446-13	Packing	1	22/37-BE2	NBR	*
9	053-473-15	Motor Protector 220V-60Hz	1	KA313-GDZL103	(T.C)	
9	053-421-18	Motor Protector 400/440V-60Hz	1	KA313-GQXL102	(T.C)	
10	143-126-12	Pan Screw (w/Spring Washer/Plain Washer)	2	M4x12	SWRM	
11	072-100-20	Eye Bolt	2	M10	SUS304	
12	064-469-25	Motor Frame (2nd)	1		FC	
13	140-055-10	Hex.Bolt	3	M8x25	SUS304	
14	142-163-18	Spring Washer	3	M8	SUS304	
15	009-116-10	Terminal	1	R-2-4	CU	
16	143-124-10	Pan Screw (w/Spring Washer/Plain Washer)	1	M4x6	SWRM	
17	142-196-10	Wave Washer	1	6205/6304	SK5	
18	122-367-12	O-Ring (1st)	1	52xd3.1	NBR	
19	052-107-12	Bearing (1st)	1	6304ZZC3		
19	052-188-17	Bearing (w/O-ring)(2nd)	1	AC-6304ZZC3		
20	058-175-19	Lead Wire Protection Plate	1	d68xd140x1.6t	Bakelite	DISCONTINUED
21	056-666-16	Stator 220V-60Hz	1Set			
21	056-904-19	Stator 440V-60Hz	1Set			
22	055-665-12	Rotor (1st)	1Set	w/Bearing		
22	055-734-13	Rotor (2nd)	1Set	w/Bearing		
23	147-128-16	Impeller Key	1	5x5x18.5L	SUS403	
24	061-170-14	Bearing Collar	1	d35.1xd46x2t	SPCC	
25	143-042-13	Pan Screw	3	M6x10	SWRM	
26	062-196-19	Bearing Fixing Washer	3	d8xd20.5x2.3t	SS	
27	052-110-18	Bearing	1	6307ZZC3		
28	146-022-16	Retaining Ring	1	C35	SK5	
29	122-333-19	O-Ring	1	170xd3.1	NBR	*
30	071-301-17	Collar	1	52l	SECC	
31	060-454-12	Bearing Housing	1		FC	
32	140-098-15	Hex.Bolt	3	M12x35	SUS304	
33	121-247-12	Packing	1	d12.3xd18x2t	PE	*
34	035-113-18	Oil Plug	1	M12x14	SUS304	
35	025-193-11	Mechanical Seal	1	H-25	SiC	
36	143-070-23	Pan Screw	2	M5x6	SWRM	
37	030-143-12	Oil Lifter	1	H-25(A)(T)	Resin	
38	143-070-10	Pan Screw	2	M5x6	SWRM	
39	030-152-14	Seal Stopper	1	H-25(A)(T)	SPCC	
40	122-246-14	O-Ring	1	180xd3.1	NBR	*

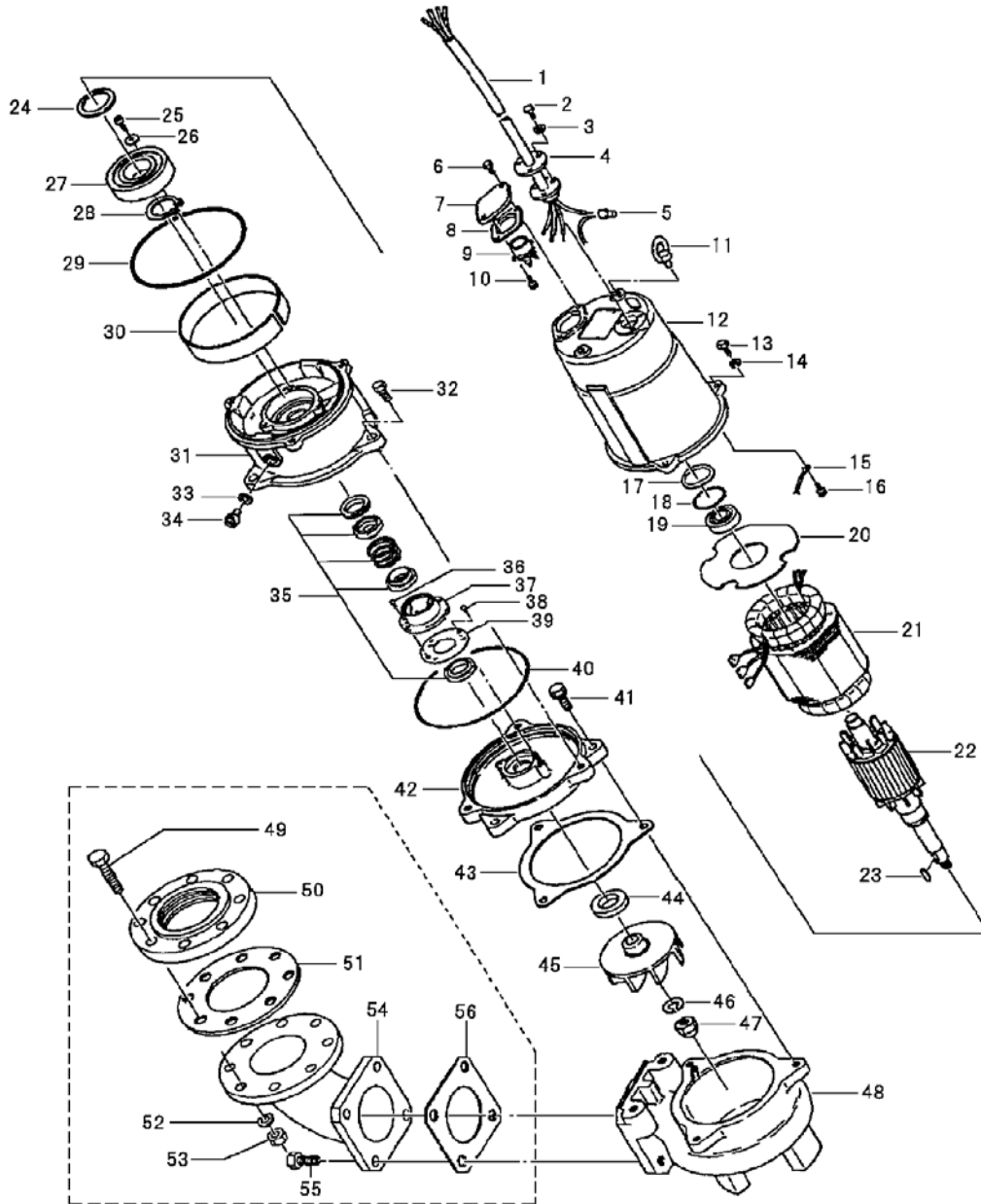
* Indicates items included in set

PARTS LIST		NON CLOG WASTEWATER PUMP			11/15/2013	
ITEM	PART No.	DESCRIPTION	QTY	SIZE	MATERIAL	NOTES
41	140-078-19	Hex.Bolt	3	M10x35	SUS304	
42	029-266-18	Oil Casing	1	U-80-22/37	FC	
43	121-408-13	Packing	1	d153xd183x2t	NBR	*
44	026-109-13	Oil Seal	1	TC-355511	NBR	
45	021-008-89	Impeller (60Hz)	1	80U22.2-61	FC	
46	142-166-11	Spring Washer	1	M16	SUS304	
47	141-033-15	Hex.Cap Nut	1	M16	SUS304	
48	020-793-12	Pump Casing	1	U-80-22	FC	
49	140-130-36	Hex.Bolt	8	M16x70	SWRM	
50	048-000-54	Screwed Flange	1	NPT-3(JIS10K)	FC	
51	121-105-33	Packing	1	JIS10Kx80mm	NR	*
52	142-166-37	Spring Washer	8	M16	SWRH	
53	141-008-11	Hex.Nut	8	M16	SUS304	
54	037-169-15	Discharge Bend	1	80x80mm	FC	
55	140-124-11	Hex.Bolt	4	M16x40	SUS304	
56	121-152-19	Packing	1	145mm2(P.C.145)	NBR	*
		Packing O-Ring Set				
	173-475-12	Packing O-Ring Set	1Set	(Marked by *)		
8	121-446-13	Packing (Protector Fixing Plate)	1	22/37-BE2	NBR	*
18	122-367-12	O-Ring (Upp. Bearing)(1st)	1	52xd3.1	NBR	*
29	122-333-19	O-Ring (M.Frame/Brq.Housing)	1	170xd3.1	NBR	*
33	121-247-12	Packing (Oil Plug)	1	d12.3xd18x2t	PE	*
40	122-246-14	O-Ring (Brq.Housing/O.Casing)	1	180xd3.1	NBR	*
43	121-408-13	Packing (O.Casing/P.Casing)	1	d153xd183x2t	NBR	*
56	121-152-19	Packing (Discharge Bend)	1	145mm2(P.C.145)	NBR	*
		Lubricant		Turbine Oil VG32 1.280ml		

PARTS LIST		NON CLOG WASTEWATER PUMP			11/15/2013	
ITEM	PART No.	DESCRIPTION	QTY	SIZE	MATERIAL	NOTES

EXPLODED VIEW

80U22.2-51/61 (U2-80-22)



C-01434-1