

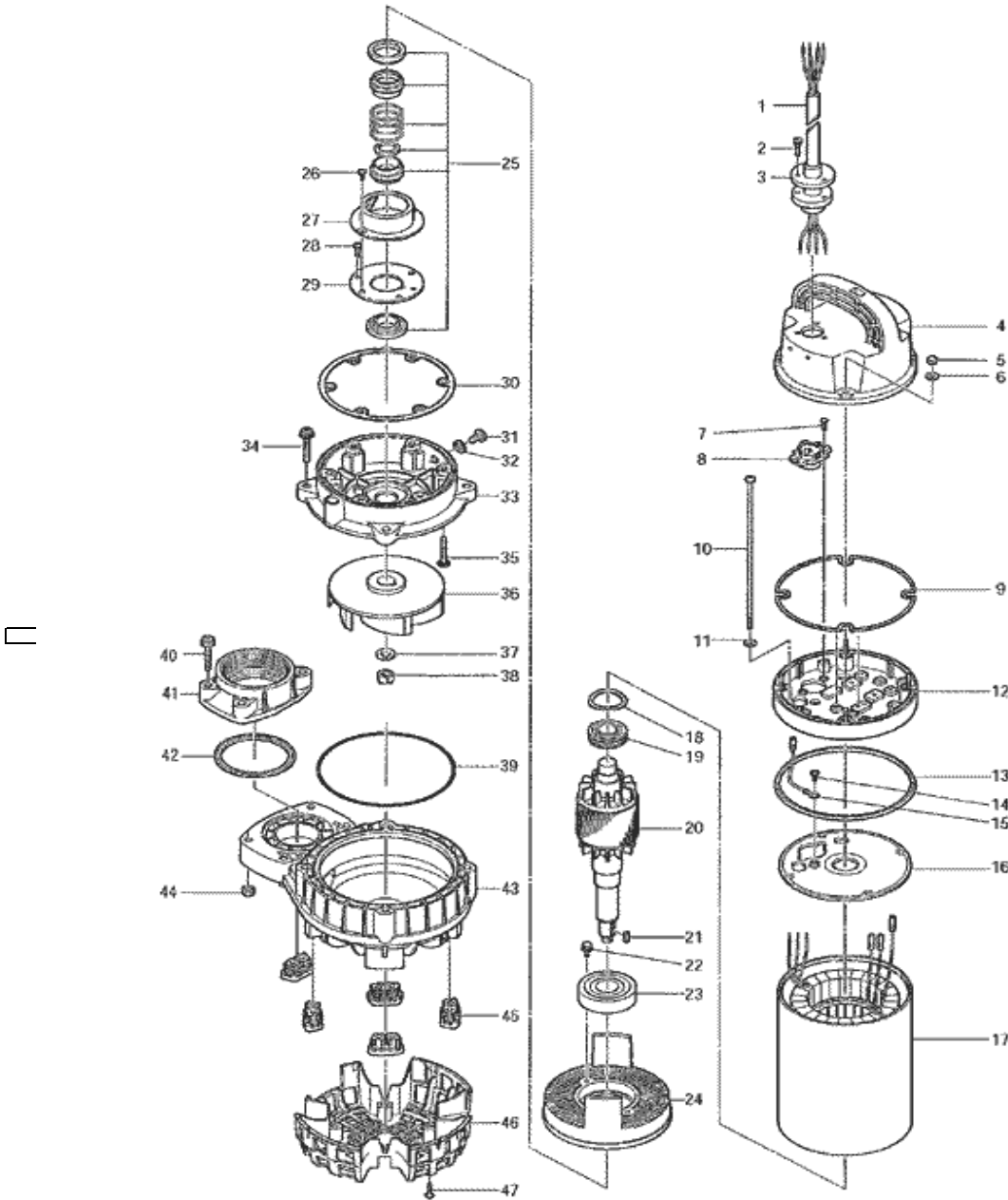
PARTS LIST	VANCS SERIES PUMPS			Date: 5/29/2012
------------	--------------------	--	--	-----------------

ITEM	PART No.	DESCRIPTION	QTY	SIZE	MATERIAL	NOTES
1	001-007-17	Cabtyre Cable Set (6m)220V-60Hz	1	VCT4Cx3.5mm2	TM(40)	
	001-007-23	Cabtyre Cable Set (6m)380/400/415V-50Hz	1	VCT4Cx2mm2	TM(40)	
	001-007-23	Cabtyre Cable Set (6m)380/440V-60Hz	1	VCT4Cx2mm2	TM(40)	
2	143-000-53	Hex.Tapping Screw	3	M5x25	Titanium	
3	003-000-27	Gland	1	BECE(P.C.40)	Titanium	
4	051-000-41	Motor Head Cover	1		Resin	
5	141-004-75	Hex.Nut	4	M6	Titanium	
6	142-000-67	Plain Washer	4	M6(d6.5xd13x1t)	Titanium	
7	143-138-17	Truss Tapping Screw	2	M4x12	SWCH	
8	053-001-72	Motor Protector 220V-60Hz	1	KA313-GGXL110	(T)	
	053-001-71	Motor Protector 380/400/415V-50Hz	1	KA313-GDXL110	(T)	
	053-001-71	Motor Protector 380/440V-60Hz	1	KA313-GDXL110	(T)	
9	121-001-22	Packing	1	d169xd176x3.1t(P.C.160)	NBR	
10	143-000-48	Pan Screw	4	M6x250L(20L)	SWRM	
11	142-113-26	Plain Washer	4	M6(D=11.5)	SPC	
12	082-000-03	Head Cover Spacer	1		Resin	
13	121-001-23	Packing	1	VK(T)-22/37(A)T(W)	NBR	
14	143-085-34	Pan Screw (w/Spring Washer)	1	M4x6	C3604	
15	009-001-09	Earth Terminal	1Set	2mm2x260L		
16	050-000-63	Motor Bracket	1		ADC	
17	056-006-59	Stator (w/M.Frame)220V-60Hz	1Set			
	056-006-61	Stator (w/M.Frame)380/400/415V-50Hz	1Set			
	056-006-61	Stator (w/M.Frame)380/440V-60Hz	1Set			
18	142-000-75	Wave Washer	1	BBA0630300A0,T=0.3	SUP	
19	052-187-16	Bearing (w/O-ring)	1	AC-6204ZCC3		
20	055-002-16	Rotor	1Set	w/Bearing		
21	147-000-44	Impeller Key	1	5x5x18.5L	Titanium	
22	140-000-06	Hex.Bolt (w/Spring Washer/Plain Washer)	2	M6x12	SWCH	
23	052-109-14	Bearing	1	6306ZCC3		
24	060-001-16	Bearing Housing	1		ADC	
25	025-000-43	Mechanical Seal	1	H-25AT	SIC	
26	143-070-23	Pan Screw	2	M5x6	SWRM	
27	030-143-12	Oil Lifter	1	H-25(A)(T)	Resin	
28	143-193-10	Pan Tapping Screw	2	M5x12	SWRM	
29	030-152-14	Seal Stopper	1	H-25(A)(T)	SPCC	
30	121-001-20	Packing	1	d160.4xd169.4x6.5t(P.C.144)	NBR	
31	035-128-16	Oil Plug	1	M10x15	Titanium	
32	121-246-11	Packing	1	d10.3xd16x2t	PE	
33	029-000-88	Oil Casing	1	80PUT22.2/23.7-51/61	Resin	
34	140-000-12	Hex.Bolt (w/Plain Washer)	4	M8x45	Titanium	
35	143-000-54	Truss Screw (w/O-Ring)	6	M6x40(P-5,NBR)	Titanium	
36	021-008-40	Impeller (50Hz)	1	80TM23.7-51	Resin	
36	021-008-60	Impeller (60Hz)	1	80TM23.7-61	Resin	
37	142-000-76	Spring Washer	1	M16	Titanium	
38	141-000-14	Hex.Nut	1	M16	Titanium	
39	122-283-13	O-Ring	1	165xd3.1	NBR	
40	140-000-12	Hex.Bolt (w/Plain Washer)	4	M8x45	Titanium	
41	048-268-19	Screwed Flange	1	80mm(1.5KW)	Resin	
42	121-568-12	Packing	1	d84xd98x5t	NBR	
43	020-002-34	Pump Casing	1	80TM22.2/3.7-51/61	Resin	
44	141-121-24	Hex.Nut	2	M8(B=12)	Titanium	
45	165-000-07	Rubber Feet	5	PU/PN/PSF21.5-52/62	NBR	
46	023-001-06	Strainer	1	80PN/TM22.2/3.7-51/61	Resin	

PARTS LIST		VANCS SERIES PUMPS		Date: 5/29/2012		
ITEM	PART No.	DESCRIPTION	QTY	SIZE	MATERIAL	NOTES

EXPLODED VIEW

80TM23.7-51/61



C-01285-1