

PARTS LIST		CONTRACTOR PUMPS			11/14/2013	
ITEM	PART No.	DESCRIPTION	QTY	SIZE	MATERIAL	NOTES
1	001-001-88	Cabtyre Cable Set (32') 60Hz (USA)	1	VCT4Cx3.5mm2	BE(40)	
2	143-000-45	Tapping Screw	3	M5x25	SUS304	
3	003-000-13	Gland	1	BECE(P.C.40)	SUS304	
4	051-000-41	Motor Head Cover	1		Resin	
5	141-029-18	Hex.Cap Nut	4	M6	SUS304	
6	142-126-19	Plain Washer	4	M6	SUS304	
7	143-138-17	Truss Tapping Screw	2	M4x12	SWCH	
8	053-001-72	Motor Protector 208/220V-60Hz(USA)	1	KA313-GGXL110	(T)	
	053-271-11	Motor Protector 460/575V-60Hz (USA)	1	KA313-GCXL103	(T)	
9	121-001-22	Packing	1	d169xd176x3.1t(P.C.160)	NBR	*
10	143-000-48	Pan Screw	4	M6x250L(20L)	SWRM	
11	142-113-26	Plain Washer	4	M6(D=11.5)	SPC	
12	082-000-02	Head Cover Spacer	1		Resin	
13	121-001-23	Packing	1	VK(T)-22/37(A)T(W)	NBR	*
14	143-085-34	Pan Screw (w/Spring Washer)	1	M4x6	C3604	
15	009-001-09	Earth Terminal	1Set	2mm2x260L		
16	050-000-63	Motor Bracket	1		ADC	
17	056-005-90	Stator(w/M.Frame) 208/220V-60Hz(USA)	1Set			
	056-005-93	Stator(w/M.Frame) 460V-60Hz(USA)	1Set			
	056-005-94	Stator(w/M.Frame) 575V-60Hz(USA)	1Set			
18	142-000-75	Wave Washer	1	BBA0630300A0,T=0.3	SUP	
19	052-187-16	Bearing (w/O-ring)	1	AC-6204ZZC3		
20	055-001-80	Rotor	1Set	w/Bearing		
21	147-000-41	Impeller Key	1	5x5x18.5L	SUS304	
22	140-000-06	Hex.Bolt (w/Spring Washer/Plain Washer)	2	M6x12	SWCH	
23	052-109-14	Bearing	1	6306ZZC3		
24	060-001-16	Bearing Housing	1		ADC	
25	025-000-07	Mechanical Seal	1	H-25T	SiC	interchangable with OLD part# 025-255-12
26	143-070-23	Pan Screw	2	M5x6	SWRM	
27	030-143-12	Oil Lifter	1	H-25(A)(T)	Resin	
28	143-193-10	Pan Tapping Screw	2	M5x12	SWRM	
29	030-152-14	Seal Stopper	1	H-25(A)(T)	SPCC	
30	121-001-20	Packing	1	d160.4xd169.4x6.5t(P.C.144)	NBR	*
31	035-127-15	Oil Plug	1	M10x15	SUS304	
32	121-246-11	Packing	1	d10.3xd16x2t	PE	*
33	029-000-88	Oil Casing	1	80PUT22.2/23.7-51/61	Resin	
34	140-000-09	Hex.Bolt (w/Spring Washer)	4	M8x45	SUS304	
35	143-000-46	Truss Screw (w/O-Ring)	6	M6x40(P-5,NBR)	SUS304	*
36	021-008-61	Impeller (60Hz)	1	80PSF23.7-61	Resin	
37	142-000-71	Impeller Washer	1	d11xd31x4t	SUS304	
38	142-164-19	Spring Washer	1	M10	SUS304	
39	140-000-65	Hex. Socket Button Head Screw	1	M10x25	SUS304	
40	122-283-13	O-Ring	1	165xd3.1	NBR	*
41	140-000-09	Hex.Bolt (w/Spring Washer)	4	M8x45	SUS304	

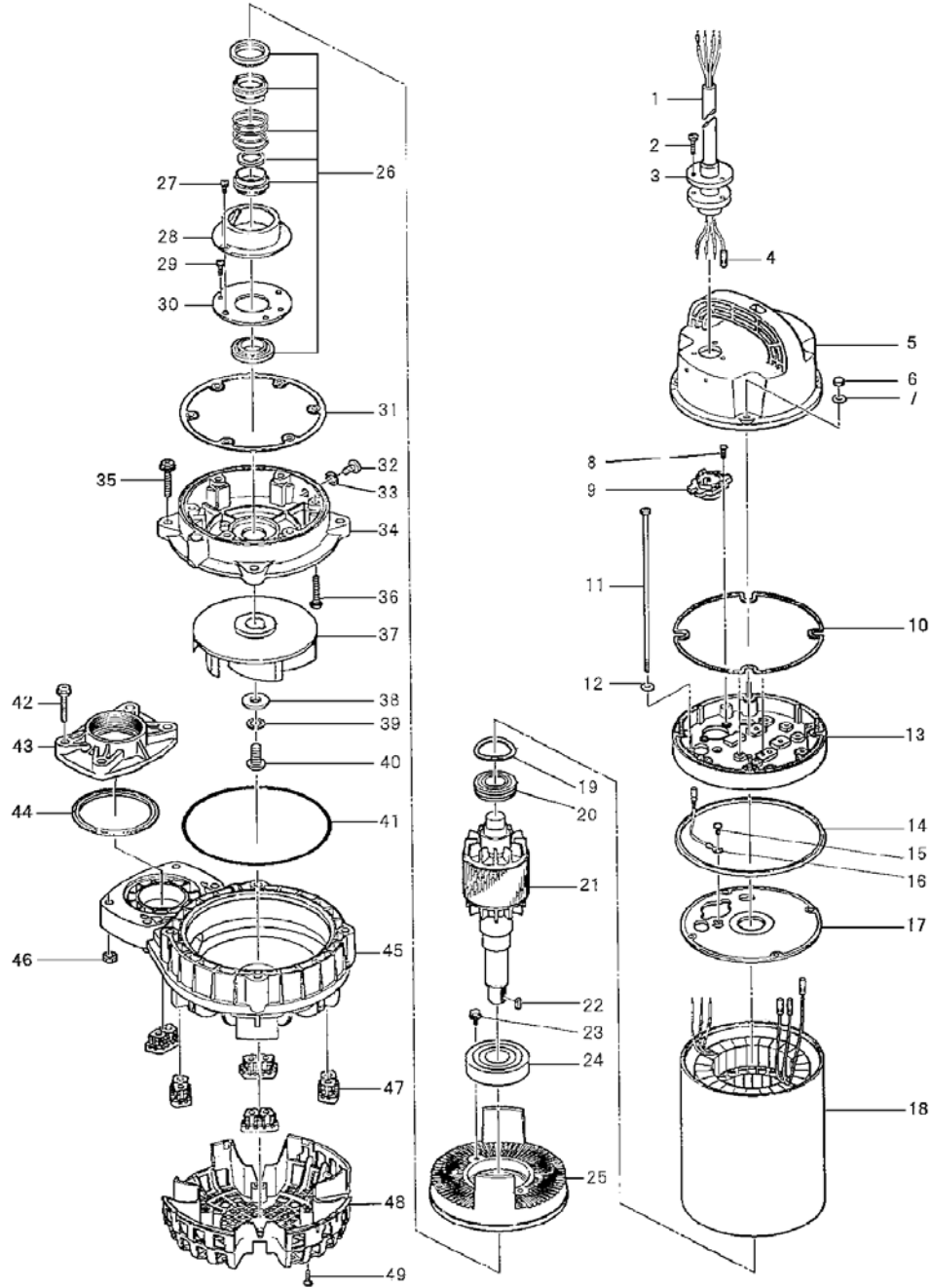
\* Indicates items included in set

PARTS LIST		CONTRACTOR PUMPS				11/14/2013
ITEM	PART No.	DESCRIPTION	QTY	SIZE	MATERIAL	NOTES
42	048-000-75	Screwed Flange	1	NPT-3(1.5kW)	Resin	
43	121-568-12	Packing	1	d84xd98x5t	NBR	*
44	020-002-33	Pump Casing	1	80PN/65PSF22.2/3.7-51/61	Resin	
45	141-121-11	Hex.Nut	2	M8(B=12)	SUS304	
46	165-000-07	Rubber Feet	5	PU/PN/PSF21.5-52/62	NBR	
47	023-001-07	Strainer	1	65PSF22.2/3.7-51/61	Resin	
48	143-000-10	Truss Tapping Screw	4	M4x18	SUS304	
		<b>Packing O-Ring Set</b>				
	173-002-35	Packing O-Ring Set	1Set	(Marked by *)		
9	121-001-22	Packing (Head Cover/Head Cover Spacer)	1	d169xd176x3.1t(P.C.160)	NBR	*
13	121-001-23	Packing (Head Cover Spacer/M.Frame)	1	VK(T)-22/37(A)T(W)	NBR	*
30	121-001-20	Packing (M.Frame/O.Casing)	1	d160.4xd169.4x6.5t(P.C.144)	NBR	*
32	121-246-11	Packing (Oil Plug)	1	d10.3xd16x2t	PE	*
35	122-003-17	O-Ring (O.Casing Bolt)	6	P-5(4.8xd1.9)	NBR	*
40	122-283-13	O-Ring (O.Casing/P.Casing)	1	165xd3.1	NBR	*
43	121-568-12	Packing (Screwed Flange)	1	d84xd98x5t	NBR	*
		Lubricant		Liquid Paraffin VG32 680ml		

PARTS LIST		CONTRACTOR PUMPS				11/14/2013
ITEM	PART No.	DESCRIPTION	QTY	SIZE	MATERIAL	NOTES

## EXPLODED VIEW

80PSF23.7-61



C-01282-2