

Parts List	Effluent Pumps	Control No:	Date: 03-18-2005
------------	----------------	-------------	------------------

ITEM	PARTS No.	DESCRIPTION	Q'TY	SIZE	MATERIAL	PRICE (\$)	NOTES
1	001-803-20	Power Cable 32'	1	LBT, AWG16/4 x 32'	VCT	96.50	
2	143-146-18	Tapping Screw	2	M5x20 (Pan), w/ Washer, Sprit	SUS304	0.50	
3	003-100-13	Gland	1	LB	SUS304	5.50	c/w Power Cable
4	143-198-15	Tapping Screw	2	M6x30 (Pan)	SUS304	3.30	
5	142-126-19	Washer	2	M6	SUS304	0.20	
6	068-278-14	Handle	1	15-PUT	Resin	26.00	
7	051-262-13	Motor Head Cover	1	15-PUT	Resin	227.90	
8	141-029-18	Acorn Nut	4	M6	SUS304	2.10	
9	142-126-19	Washer	4	M6	SUS304	0.20	
10	143-138-17	Tapping Screw	2	M4x12 (Truss)	SWRM	0.40	
11	053-510-15	Motor Protector 200/220V-60HZ	1	KA313-GBVL102 (T)		114.70	
11	053-380-14	Motor Protector 380V-60HZ	1	KA313-GQVL102 (T)		63.60	
11	053-378-19	Motor Protector 400/440V-60HZ	1	KA313-GQVL104 (T)		162.80	
11	053-379-10	Motor Protector 525V-50HZ	1	KA313-GQVL116 (T)		70.00	
11	053-	Motor Protector 575V-60HZ	1			162.80	
12	121-569-13	Gasket (H.Cover/H.C.Spacer)	1	15-PUT/PNT/PSHT	NBR	21.00	*
13	143-199-16	Pan Screw	4	M6x190	SWRM	18.20	
14	142-113-26	Washer	4	M6 (N, D=11.5)	SPC	0.20	see 142-113-13
15	082-106-14	Head Cover Spacer	1	15-PU(A/W)T	Resin	190.90	
16	121-570-17	Gasket (H.C.Spacer/M.Frame)	1	d152xD161x2.1t	NBR	24.90	*
17	143-085-34	Pan Screw	1	M4x6, w/ S.Washer	BSBM	0.40	see 143-085-21
18	009-187-12	Grounding Wire	1	AWG16 x 150L		3.30	
18	009-190-18	Grounding Wire	1	AWG16 x 150L , G/Y		1.60	
19	050-464-14	Motor Bracket	1	15-PU(A/W)T	ADC	103.90	
20	056-B78-16	Stator 200/220V-60HZ	1	15-PU(A/W)T (200-50, 200/220-60)		1,628.00	c/w Motor Frame
20	056-	Stator 400/440V-60HZ	1	15-PU(A/W)T (380/400/415-50, 400/440-60)		1,628.00	c/w Motor Frame
20	056-	Stator 575V-50HZ	1	15-PU(A/W)T		1,628.00	c/w Motor Frame
21	142-435-14	Wave Washer	1	BBY060311A0	SUP	5.00	
22	052-102-17	Ball Bearing (Upper)	1	6203ZC3		9.60	
23	055-830-10	Rotor and Shaft	1	15-PU(A/W)T		1,278.70	c/w Ball Bearings
24	061-161-12	Bearing Collar	1	d25.1xD36x1.6t	SPC	2.20	
25	052-108-13	Ball Bearing (Lower)	1	6305ZC3		18.90	
26	060-462-13	Bearing Housing	1	15-PUT/PNT/PSHT	ADC	233.80	
27	025-252-19	Mechanical Seal	1	H-20A	SiC+CCBN	196.80	see 025-192-10
28	143-070-23	Pan Screw	2	M5x6, w/ Scotch Grip	SWRM	0.20	
29	030-144-13	Oil Lifter	1	H-20(A)(T)	Resin	4.00	
30	143-193-10	Tapping Screw	2	M5x12 (Pan), Sprit	SWRM	0.30	
31	030-153-15	Seal Stoper	1	H-20(A)	SPCC	4.30	
32	121-567-11	Gasket (M.Frame/O.Casing)	1	15-PUT/PNT/PSHT	NBR	9.30	*
33	035-127-15	Oil Plug	1	M10x15 (Binding Screw)	SUS304	3.30	
34	121-246-11	Gasket (Oil Plug)	1	d10.3xD16x2t	PE-sheet	0.80	*
35	029-380-19	Oil Casing	1	15-PUT/PNT/PSHT	Resin	83.20	
36	140-484-12	Bolt	4	M8x45, w/ S.Washer & Washer	SUS304	2.50	
37	143-194-11	Truss Screw	6	M6x30, w/ PE-Washer	SUS304	0.90	
38	142-428-14	Conical Spring Washer	1	d16.3xD31.5x1.2t	SUS304	2.50	
39	021-P54-10	Impeller (60Hz)	1	15-PSHT-60Hz	Resin	24.40	60Hz
39	021-P53-19	Impeller (50Hz)	1	15-PSHT-50Hz	Resin	24.40	50Hz
40	143-195-12	Truss Screw	1	M8x18, w/ Washer	SUS304	2.70	
41	122-276-13	O-Ring (O.Casing/P.Casing)	1	160xD3.1	NBR	4.90	*
42	140-484-12	Bolt	4	M8x45, w/ S.Washer & Washer	SUS304	2.50	
43	048-268-19NPT	Companion Flange 3" NPT	1	NPT-3" (15-PUT)	PVC	13.80	
43	048-15-PUT-SS	Companion Flange 3" NPT	1	NPT-3" (15-PUT)	SCS	156.80	Option
44	121-568-12	Gasket (Companion Flange)	1	15-PUT/PNT/PSHT	NBR	4.30	*
45	020-B17-16	Pump Casing	1	15-PNT/PSHT	Resin	135.00	
46	141-121-11	Nut	2	M8 (S=12)	SUS304	0.70	
47	023-502-11	Suction Strainer	1	15-PSHT	Resin	5.90	
48	143-179-10	Tapping Screw	3	M4x20 (Truss)	SUS304	0.50	
<Gasket O-Ring Set>							
	173-563-18	Gasket O-Ring Set	1set	(*)		65.10	
12	121-569-13	Gasket (H.Cover/H.C.Spacer)	1	15-PUT/PNT/PSHT	NBR	21.00	*
16	121-570-17	Gasket (H.C.Spacer/M.Frame)	1	d152xD161x2.1t	NBR	24.90	*
32	121-567-11	Gasket (M.Frame/O.Casing)	1	15-PUT/PNT/PSHT	NBR	9.30	*
34	121-246-11	Gasket (Oil Plug)	1	d10.3xD16x2t	PE-sheet	0.80	*
41	122-276-13	O-Ring (O.Casing/P.Casing)	1	160xD3.1	NBR	4.90	*
44	121-568-12	Gasket (Companion Flange)	1	15-PUT/PNT/PSHT	NBR	4.30	*
		Lubricant		Turbine Oil#32 500 mL (16.9 floz)	(SAE 10W-20)		
		Parts for guide rail fittings are shown in the following Control No.					
		TOK-65					
<Option for Longer Cable>							
1	001-803-33	Power Cable 50'	1	LBT, AWG 16/4 x 50'	VCT	134.20	

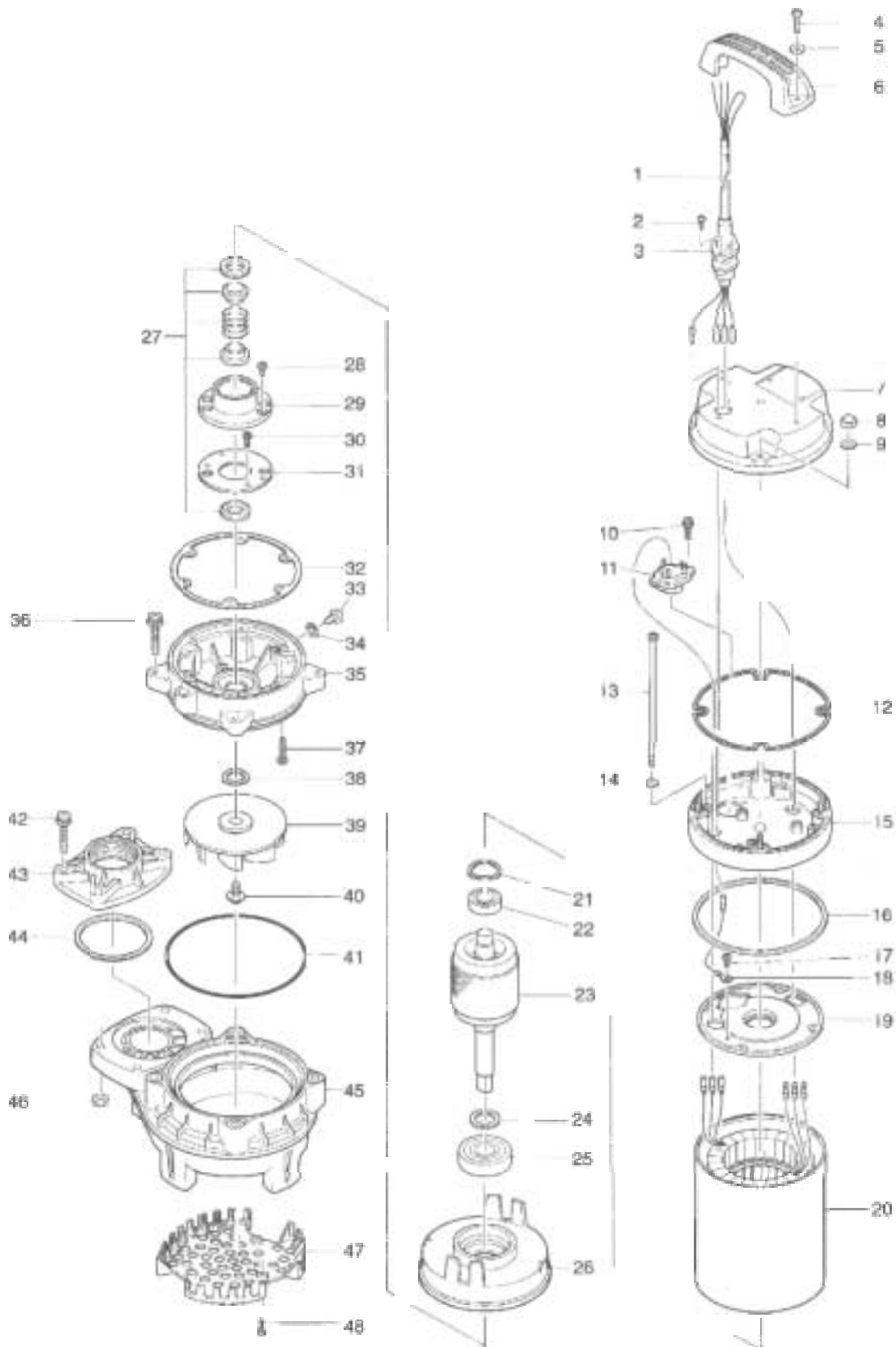
* Indicates items included in set

Parts List

Effluent Pumps

Control No:

Date: 03-18-2005





MODEL 80PSF21.5-61

Parts List	Effluent Pumps	Control No:	Date: 03-18-2005
------------	----------------	-------------	------------------

ITEM	PARTS No.	DESCRIPTION	Q'TY	SIZE	MATERIAL	PRICE (\$)	NOTES
1	001-803-62	Power Cable 100'	1	LBT, AWG 16/4 x 100'	VCT	272.30	
1	001-803-20-150FT	Power Cable 150'	1	LBT, AWG 16/4 x 150'	VCT	438.10	