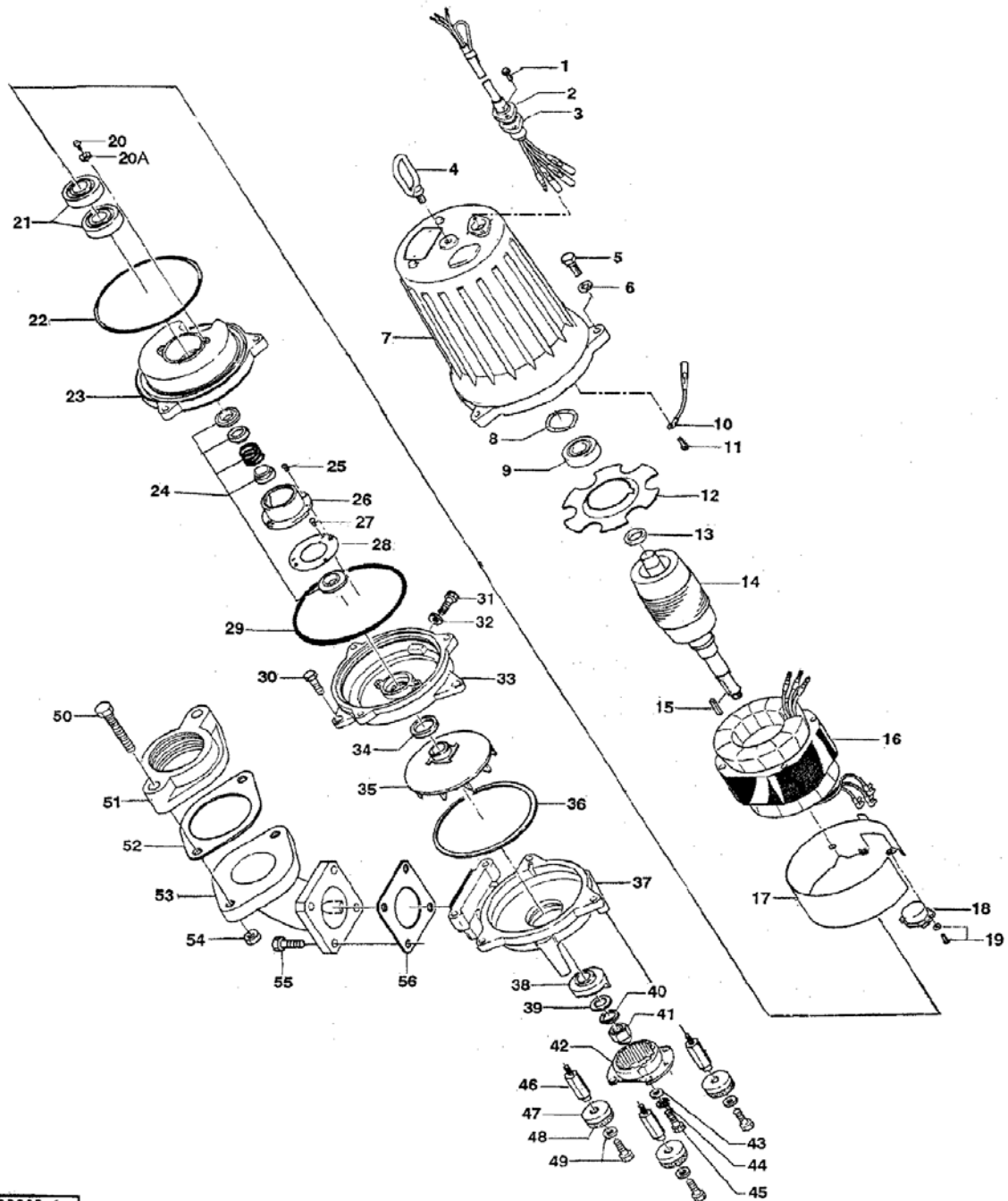


PARTS LIST		CONTRACTOR PUMP			3/4/2013	
ITEM	PART No.	DESCRIPTION	QTY	SIZE	MATERIAL	NOTES
1	140-427-17	Hex.Bolt (w/Plain Washer)	2	M5x15	SUS304	
2	003-190-10	Gland	1		SUS316	
3	001-803-20	Cabtyre Cable Set (10m)208/230V-60Hz(USA)	1	VCT4Cx1.25mm2	LBT	
	001-803-20	Cabtyre Cable Set (10m)460V-60Hz(USA)	1	VCT4Cx1.25mm2	LBT	
4	072-000-03	Eye Bolt	1	M10	SUS304	
5	140-085-19	Hex.Bolt	3	M10x70	SUS304	
6	142-164-19	Spring Washer	3	M10	SUS304	
7	064-000-08	Motor Frame	1		FC	
8	142-389-12	Wave Washer	1	6204	SK5	
9	052-187-16	Bearing (w/O-ring)	1	AC-6204ZZC3		
10	009-211-16	Earth Terminal	1Set	1.25mm2x120L		
11	143-085-34	Pan Screw (w/Spring Washer)	1	M4x6	C3604	
12	058-000-13	Lead Wire Protection Plate	1	d61xd132x2t	Bakelite	
13	061-174-18	Slinger	1	d20xd27x2t	SPC	
14	055-000-05	Rotor	1Set			
15	147-000-01	Impeller Key	1	5x5x50.5L	SUS420	
16	056-001-18	Stator 208/230V-60Hz(USA)	1Set			
	056-001-19	Stator 460V-60Hz(USA)	1Set			
17	127-000-26	Protector Fixing Plate	1	KA313,d145	SPCC	
18	053-518-13	Motor Protector 208/230V-60Hz(USA)	1	KA313-GDXL103	(T.C)	
	053-477-19	Motor Protector 460V-60Hz(USA)	1	KA313-GQXL104	(T.C)	
19	143-126-12	Pan Screw (w/Spring Washer/Plain Washer)	2	M4x12	SWRM	
20	140-000-23	Hex.Bolt (w/Spring Washer)	2	M5x10	SWRM	
20A	062-187-17	Bearing Fixing Washer	2	d5.5xd18x2.3t	SPC	
21	052-155-15	Bearing	1Set	6305ZZD2C3		
22	122-145-12	O-Ring	1	G-170(169.3xd5.7)	NBR	
23	060-000-14	Bearing Housing	1		FC	
24	025-192-10	Mechanical Seal	1	H-20	SiC	
25	143-070-23	Pan Screw	2	M5x6	SWRM	
26	030-144-13	Oil Lifter	1	H-20(A)(T)	Resin	
27	143-070-10	Pan Screw	2	M5x6	SWRM	
28	030-153-15	Seal Stopper	1	H-20(A)	SPCC	
29	122-145-12	O-Ring	1	G-170(169.3xd5.7)	NBR	
30	140-076-17	Hex.Bolt	3	M10x30	SUS304	
31	035-124-12	Oil Plug	1	M10x15	SUS304	
32	121-246-11	Packing	1	d10.3xd16x2t	PE	
33	029-275-10	Oil Casing	1	15-MGC	FC	
34	026-107-11	Oil Seal	1	TC-32488	NBR	
35	021E1419	Impeller (60Hz)	1	50MG21.5-62	FC	
36	121-410-18	Packing	1	d158xd176x0.5t	PE	
37	020-801-14	Pump Casing	1	15-MGC	FC	
38	024-137-14	Rotating Cutter	1	15-MGC	HiCrFC	
39	142-116-16	Plain Washer	1	M12(D=21)	SUS304	
40	142-165-10	Spring Washer	1	M12	SUS304	

PARTS LIST		CONTRACTOR PUMP				3/4/2013
ITEM	PART No.	DESCRIPTION	QTY	SIZE	MATERIAL	NOTES

EXPLODED VIEW

32MG21.5-52/62
50MG21.5-62



C-00660-1