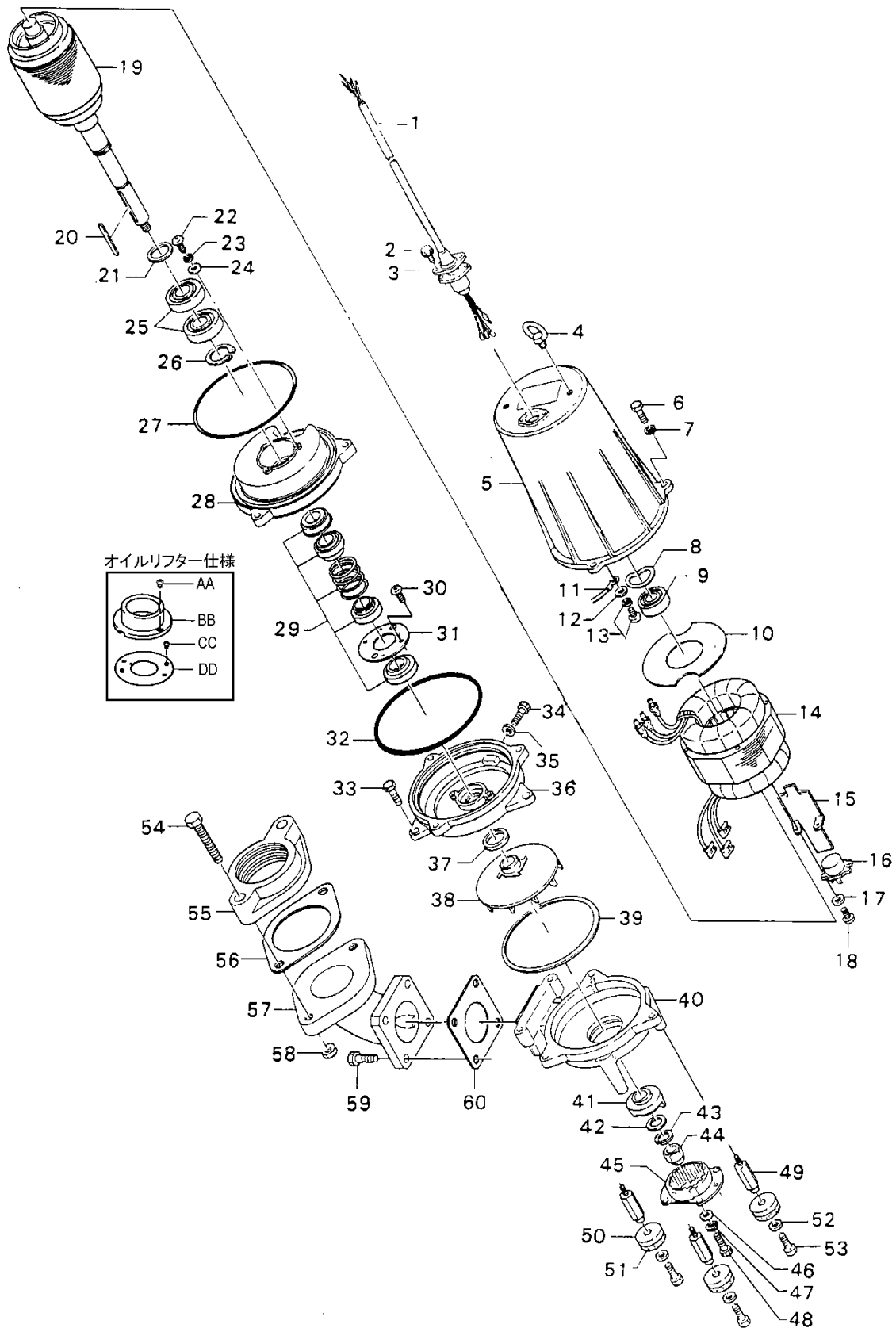


Parts List	Grinder Pumps	Control No: MG-4-1-1	Date: 03-18-2005
------------	---------------	----------------------	------------------

ITEM	PARTS No.	DESCRIPTION	Q'TY	SIZE	MATERIAL	PRICE (\$)	NOTES
1	001-803-20	Power Cable 32'	1	LBT, AWG16/4 x 32'	VCT	96.50	
2	140-427-17	Bolt	2	M5x15, w/ Washer	SUS304	0.60	
3	003-100-13	Gland	1	LB	SUS304	5.50	c/w Power Cable
4	072-105-25	Lifting Eye Bolt	2	M8	SUS304	10.70	
5	064-279-13	Motor Frame	1	15-BE2 (1st)	FC	257.50	1st
5	064-279-26	Motor Frame	1	15-BE2 (2nd), "A"mark	FC	257.50	2nd (for AC-Bearing)
6	140-081-15	Bolt	3	M10x50	SUS304	3.10	
7	142-164-19	Spring Washer	3	M10	SUS304	0.40	
8	142-195-19	Wave Washer	1	#6204/6303	SK-5	2.70	
9	052-103-18	Ball Bearing (Upper)	1	6204ZZC3		11.50	1st
9	052-187-16	Ball Bearing (Upper)	1	AC-6204ZZC3		17.80	2nd, AC-Bearing
10	058-116-12	Lead Wire Prot. Plate	1	d52xD115x1t	Bakelite	9.60	
11	009-112-16	Grounding Wire	1	AWG16		1.60	
12	142-124-20	Washer	1	M4	SPC	0.30	see 142-111-11
13	143-086-22	Pan Screw	1	M4x8, w/ S.Washer	SWRM	0.30	
14	056-A86-16	Stator 200/220V-60HZ	1	15-BE2(2nd) (200-50, 200/220-60)		371.50	2nd, see 056-300-19 (1st)
14	056-	Stator 400/440V-60HZ	1	15-BE2(2nd) (400/415-50, 400/440-60)		371.50	2nd, see 056-776-10 (1st)
14	056-	Stator 575V-60HZ	1	15-BE2(2nd)		371.50	2nd
15	127-104-14	Retainer (Protector)	1	15-BE2	SECC	15.70	
16	053-204-26	Motor Protector 200/220V-60HZ	1	KA313-GCTL103 (T)		63.60	
16	053-380-14	Motor Protector 400/440V-60HZ	1	KA313-GQVL102 (T)		63.60	
16	053-378-19	Motor Protector 440/460/480V-60HZ	1	KA313-GQVL104 (T)		162.80	
16	053-379-10	Motor Protector 525V-50HZ	1	KA313-GQVL116 (T)		70.00	
16	053-	Motor Protector 575V-60HZ	1			162.80	
17	142-124-20	Washer	2	M4	SPC	0.30	see 142-111-11
18	143-015-17	Pan Screw	2	M4x10	SWRM	0.20	
19	055-620-15	Rotor and Shaft	1	15-MGC (1st)		429.20	1st, c/w Ball Bearings
19	055-738-17	Rotor and Shaft	1	15-MGC (2nd), w/ AC-Bearing		429.20	2nd, c/w Ball Bearings
20	147-121-19	Key	1	d5x5x6L (R)	SUS	14.20	
21	061-161-12	Bearing Collar	1	d25.1xD36x1.6t	SPC	2.20	
22	143-028-13	Pan Screw	3	M5x10	SWRM	0.20	
23	142-161-32	Spring Washer	3	M5	SWRH	0.24	see 142-161-16
24	062-187-17	Bearing Retainer	3	d5.5xD18x2.3t	SPC	1.90	
25	052-155-15	Ball Bearing (Lower)	1set	6305ZZD2C3		80.80	
26	146-015-16	Retaining Ring	1	C25	SK-5	2.40	
27	122-145-12	O-Ring (M.Frame/B.Housing)	1	G-170	NBR	6.80	*
28	060-331-12	Bearing Housing	1	15-MGC	FC	78.10	
29	025-252-19	Mechanical Seal	1	H-20A	SiC+CCBN	196.80	see 025-192-10
30	143-070-10	Pan Screw	2	M5x6	SWRM	0.20	
31	030-122-15	Retainer	1	H-20	SPC	4.70	
32	122-145-12	O-Ring (B.Housing/O.Casing)	1	G-170	NBR	6.80	*
33	140-076-17	Bolt	3	M10x30	SUS304	2.10	
34	035-124-12	Oil Plug	1	M10x15 (Socket Bolt, J=8)	SUS304	2.20	
35	121-246-11	Gasket (Oil Plug)	1	d10.3xD16x2t	PE-sheet	0.80	*
36	029-275-10	Oil Casing	1	15-MGC	FC	195.40	
37	026-107-24	Oil Seal	1	DD-32488	NBR	6.40	
38	021-E14-19	Impeller (60Hz)	1	15-MGC-60Hz	FC	118.40	60Hz
38	021-E15-10	Impeller (50Hz)	1	15-MGC-50Hz	FC	118.40	50Hz
39	121-410-18	Gasket (O.Casing/P.Casing)	1	d158xD176x0.5t	PE-sheet	1.80	*
40	020-801-14	Pump Casing	1	15-MGC	FC	207.20	
41	024-137-14	Rotationaly Blade	1	15-MGC	HiCrFC	260.50	
42	142-116-16	Washer	1	M12 (N, D=21)	SUS304	0.60	
43	142-165-10	Spring Washer	1	M12	SUS304	0.60	
44	141-032-14	Acorn Nut	1	M12	SUS304	4.00	
45	022-614-14	Stationary Blade	1	15-MGC	HiCrFC	266.40	
46	142-113-13	Washer	4	M6 (N, D=11.5)	SUS304	0.40	
47	142-162-17	Spring Washer	4	M6	SUS304	0.24	
48	140-249-13	Socket Bolt	4	M6x15	SUS304	1.10	
49	144-502-19	Stud Bolt	3	M8x67 (-18/16.5)	SUS410	42.60	
50	047-113-28	Rubber Foot Cover	3	No.3A (13.5) (Impeller Thread Co	SUS304	2.10	
51	165-008-15	Rubber Feet	3	15/37-MGC	NBR	6.10	
52	142-127-10	Washer	3	M8	SUS304	0.20	
53	140-054-19	Bolt	3	M8x20	SUS304	1.00	
54	140-059-14	Bolt	2	M8x45	SUS304	1.60	
57	048-274-18	Companion Flange 2" NPT	1	NPT-2" (P.C.90)	Resin	26.20	
56	121-468-11	Gasket (Companion Flange)	1	P.C.90xd45x2t	NR	1.80	* for 32 or 40mm (1 1/4" or 1 1/2") Discharge
56	121-469-12	Gasket (Companion Flange)	1	P.C.90xd58x2t	NR	1.80	for 50mm (2") Discharge
57	037-319-12	Discharge Bend	1	32mm (15-MGC)	FC	91.20	
58	141-005-18	Nut	2	M8	SUS304	0.60	
59	140-079-10	Bolt	4	M10x40	SUS304	2.40	
60	121-142-16	Gasket (Discharge Bend)	1	90mm2 (P.C.98)	NBR	3.00	*

\* Indicates items included in set





MODEL 50MG21.5-61

Parts List		Grinder Pumps		Control No: MG-4-1-1		Date: 03-18-2005	
ITEM	PARTS No.	DESCRIPTION	Q'TY	SIZE	MATERIAL	PRICE (\$)	NOTES
<Oil Lifter Version>							
AA	143-070-23	Pan Screw	2	M5x6, w/ Scotch Grip	SWRM	0.20	
BB	030-144-13	Oil Lifter	1	H-20(A)(T)	Resin	4.00	
CC	143-070-10	Pan Screw	2	M5x6	SWRM	0.20	
DD	030-153-15	Retainer	1	H-20(A)	SPCC	4.30	
<Gasket O-Ring Set>							
	173-460-14	Gasket O-Ring Set	1set	(*)		16.90	
27	122-145-12	O-Ring (M.Frame/B.Housing)	1	G-170	NBR	6.80	*
32	122-145-12	O-Ring (B.Housing/O.Casing)	1	G-170	NBR	6.80	*
35	121-246-11	Gasket (Oil Plug)	1	d10.3xD16x2t	PE-sheet	0.80	*
39	121-410-18	Gasket (O.Casing/P.Casing)	1	d158xD176x0.5t	PE-sheet	1.80	*
56	121-468-11	Gasket (Companion Flange)	1	P.C.90xD45x2t	NR	1.80	* for 32 or 40mm (1 1/4" or 1 1/2") Discharge
60	121-142-16	Gasket (Discharge Bend)	1	90mm2 (P.C.98)	NBR	3.00	*
		Lubricant		Turbine Oil#32 1,000 mL (33.8 floz)	(SAE 10W-20)		
Parts for guide rail fittings are shown in the following Control No.							
		TOS-32 (TOS-15-1-1)					
		TOS-50H (TOS-16-1-1)					
<Option for Longer Cable>							
1	001-803-33	Power Cable 50'	1	LBT, AWG 16/4 x 50'	VCT	134.20	
1	001-803-62	Power Cable 100'	1	LBT, AWG 16/4 x 100'	VCT	272.30	
1	001-803-20-150FT	Power Cable 150'	1	LBT, AWG 16/4 x 150'	VCT	438.10	

\* Indicates items included in set

