

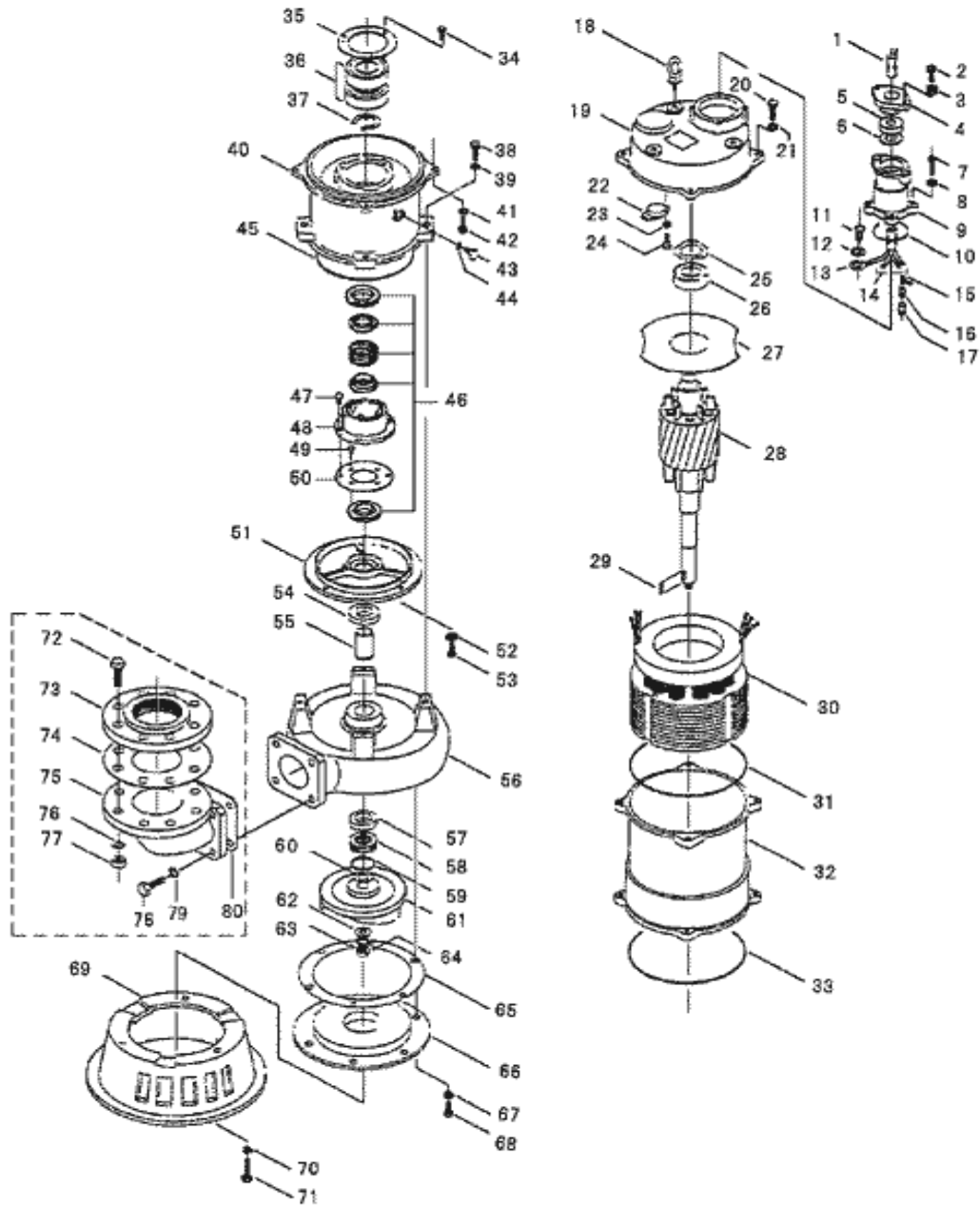
PARTS LIST		CONTRACTOR PUMPS			6/18/2012	
ITEM	PART No.	DESCRIPTION	QTY	SIZE	MATERIAL	NOTES
1		Cable (Sold per meter)				
2	140-079-36	Hex.Bolt	2	M10x40	SUS316	
3	141-006-22	Hex.Nut	2	M10	SUS316	
4	003-112-18	Gland	1	No.2	SCS14	
5	004-128-10	Cable Bush	1	d21xd49x20l	CR	
6	005-102-11	Bush Washer	1	d25xd47x3.2t	SPC	
7	140-056-24	Hex.Bolt	4	M8x30	SUS316	
8	142-163-21	Spring Washer	4	M8	SUS316	
9	006-101-26	Stuffing Box	1	55/75-CL	SCS14	
10	122-126-20	O-Ring	1	G-75(74.4xd3.1)	VITON	
11	143-014-16	Pan Screw	1	M4x8	SWRM	
12	142-160-31	Spring Washer	1	M4	SWRH	
13	009-139-19	Terminal	1	R-8-4	CU	
14	009-125-12	Terminal (Cable)	3	P-8	CU	
14	009-123-10	Terminal (Motor)	3	P-5.5	CU	
15	009-101-12	Terminal(C/W Screw)	3	d12x(d6.6xd6.6)x25l	C3604	
16	002-115-18	Heat Shrink Tube (Sold per meter)	m	EVA(d16.5x1t)	(Vm)	
17	002-116-19	Heat Shrink Tube (Sold per meter)	m	A4(d20x0.35t)	(Vm)	
18	072-102-35	Eye Bolt	3	M12	SUS316	
19	050-292-19	Motor Bracket	1		SCS14	
20	140-079-23	Hex.Bolt	4	M10x40	SUS316	
21	142-164-22	Spring Washer	4	M10	SUS316	
22		Motor Protector				
22	053-307-17	Motor Protector 220V-60Hz	1	KA314-HLFQ00	(H.C)	
22	053-192-17	Motor Protector 380V-50Hz	1	KA314-HKXL00	(B.C)	
22	053-377-18	Motor Protector 400V-50Hz	1	KA313-GGCQ110	(H.C)	
22	053-377-18	Motor Protector 400/440V-60Hz	1	KA313-GGCQ110	(H.C)	
22	053-377-18	Motor Protector 415V-50Hz	1	KA313-GGCQ110	(H.C)	
23	142-160-31	Spring Washer	2	M4	SWRH	
24	143-016-18	Pan Screw	2	M4x12	SWRM	
25	142-198-12	Wave Washer	1	6306	SK5	
26	052-109-14	Bearing	1	6306ZC3		
27	058-120-19	Lead Wire Protection Plate	1	d94xd220x1.6t	Bakelite	
28	055-406-13	Rotor (1st)	1Set			
28	055-406-26	Rotor (2nd)	1Set			
29	147-080-15	Impeller Key	1	7x7x18l	SUS316	
30		Stator	1Set			
31	122-250-24	O-Ring	1	230xd3.8	VITON	
32	064-344-10	Motor Frame	1		SCS14	
33	122-250-24	O-Ring	1	230xd3.8	VITON	
34	140-030-35	Hex.Bolt	3	M6x12	SWRM	
35	062-116-15	Bearing Fixing Plate	1	d80xd115x3.2t	SS	
36	052-139-13	Bearing	1Set	6308ZZD2C3		
37	146-025-19	Retaining Ring	1	C40	SK5	

PARTS LIST		CONTRACTOR PUMPS			6/18/2012	
ITEM	PART No.	DESCRIPTION	QTY	SIZE	MATERIAL	NOTES
38	140-099-29	Hex.Bolt	4	M12x40	SUS316	
39	142-165-23	Spring Washer	4	M12	SUS316	
40	060-278-10	Bearing Housing	1		SCS14	
41	142-164-22	Spring Washer	4	M10	SUS316	
42	140-079-23	Hex.Bolt	4	M10x40	SUS316	
43	035-102-14	Oil Plug	1	M12x16(B=21)	SUS316	
44	122-259-23	O-Ring	1	12xd3	VITON	
45	122-406-14	O-Ring	1	195xd3.1	VITON	
46	025-191-19	Mechanical Seal	1	X-30W	SIC	
47	143-070-23	Pan Screw	2	M5x6	SWRM	
48	030-142-11	Oil Lifter	1	H-30(A)(T)	Resin	
49	143-070-10	Pan Screw	3	M5x6	SWRM	
50	030-151-13	Seal Stopper	1	H-30(A)(T)	SPCC	
51	029-141-16	Oil Casing	1	55/110-CL	SCS14	
52	142-163-21	Spring Washer	4	M8	SUS316	
53	140-054-35	Hex.Bolt	4	M8x20	SUS316	
54	026-000-31	Oil Seal	1	TC-355511	VITON	
55	071-147-13	Shaft Sleeve	1	55/110-CL2	SUS316	
56	020-319-10	Pump Casing	1	55/110-CL	SCS14	
57	026-000-31	Oil Seal	1	TC-355511	VITON	
58	026-153-12	Labyrinth Ring	1	55/110-CL	SUS316	
59	122-121-25	O-Ring	1	G-50(49.4xd3.1)	VITON	
60	040-117-18	Impeller Shim		d25.2xd38x0.3t	SUS316	
61	021-373-15	Impeller (50Hz)	1	100SFQ27.5-51	SCS14	
61	021C0515	Impeller (60Hz)	1	100SFQ27.5-61	SCS14	
62	142-129-38	Plain Washer (1st)	1	M12	SUS316	
62	142-130-32	Plain Washer (2nd)	1	M16	SUS316	
63	142-165-23	Spring Washer (1st)	1	M12	SUS316	
63	142-166-24	Spring Washer (2nd)	1	M16	SUS316	
64	141-032-27	Hex.Cap Nut (1st)	1	M12	SUS316	
64	141-033-28	Hex.Cap Nut (2nd)	1	M16	SUS316	
65	120-121-16	Packing (S.Cover)		d204xd264x0.3t	PE	
66	022-333-16	Suction Cover	1	75/110-CL	SCS14	
67	142-165-23	Spring Washer	3	M12	SUS316	
68	140-095-25	Hex.Bolt	3	M12x20	SUS316	
69	023-123-27	Pump Stand	1	55/110-CL	SCS14	
70	142-165-23	Spring Washer	3	M12	SUS316	
71	140-097-27	Hex.Bolt	3	M12x30	SUS316	
72	140-129-29	Hex.Bolt	8	M16x65	SUS316	
73	048-000-44	Screwed Flange	1	JIS10Kx100mm(PT)	SCS14	
74	121-148-12	Packing	1	JIS10Kx100mm	Cork	
75	037-114-28	Discharge Bend	1	80x100mm	SCS14	
76	142-166-24	Spring Washer (2nd)	8	M16	SUS316	
77	141-008-24	Hex.Nut	8	M16	SUS316	

PARTS LIST		CONTRACTOR PUMPS				6/18/2012
ITEM	PART No.	DESCRIPTION	QTY	SIZE	MATERIAL	NOTES

EXPLODED VIEW

100SFQ25.5/27.5-51/61(55/75-CL2)



C-01432-1