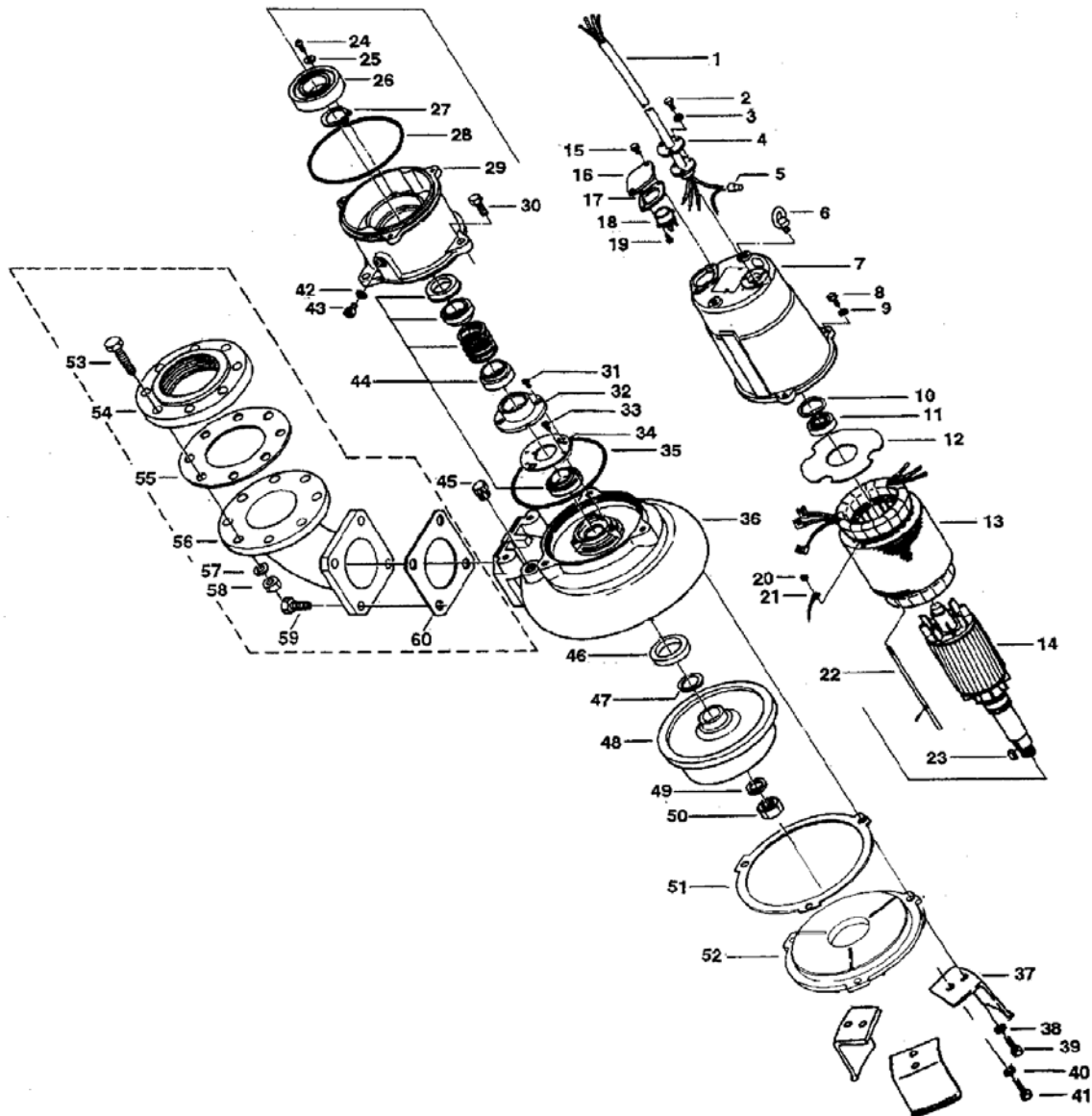


PARTS LIST		SEWAGE & WASTEWATER PUMPS			3/26/2013	
ITEM	PART No.	DESCRIPTION	QTY	SIZE	MATERIAL	NOTES
1	001-178-29	Cabtyre Cable Set (6m)380V-50Hz(THA)	1	VCT4Cx2mm2	BE/CE	
	001-178-29	Cabtyre Cable Set (6m)380/400/415V-50Hz	1	VCT4Cx2mm2	BE/CE	
	001-004-92	Cabtyre Cable Set (10m)380/400/415V-50Hz(EUR)	1	H07RN4Cx1.5mm2(CEE.Gray)	BE(HAR)	
	001-178-29	Cabtyre Cable Set (6m)440V-60Hz	1	VCT4Cx2mm2	BE/CE	
2	140-021-17	Hex.Bolt	3	M5x20	SUS304	
3	142-422-18	Seal Washer	3	PM-5	SUS+NBR	
4	003-111-20	Gland	1		SUS304	
5	009-275-18	Compression type Terminal	4	TGNB-5.5(Insulated)	CU	
6	072-100-20	Eve Bolt	2	M10	SUS304	
7	064-509-15	Motor Frame	1		FC	
8	140-055-10	Hex.Bolt	3	M8x25	SUS304	
9	142-163-18	Spring Washer	3	M8	SUS304	
10	142-196-10	Wave Washer	1	6205/6304	SK5	
11	052-188-17	Bearing (w/O-ring)	1	AC-6304ZZC3		
12	058-117-13	Lead Wire Protection Plate	1	d70xd140x1.6t	Bakelite	
13	056-002-46	Stator 380V-50Hz(THA)	1Set			
	056-002-47	Stator 380/400/415V-50Hz	1Set			
	056-002-47	Stator 380/400/415V-50Hz(EUR)	1Set			
	056-002-47	Stator 440V-60Hz	1Set			
14	055-609-18	Rotor	1Set			
15	140-053-18	Hex.Bolt	2	M8x18	SUS304	
16	127-195-12	Protector Fixing Plate	1	22/37-BE2	SUS304	
17	121-446-13	Packing	1	22/37-BE2	NBR	
18	053-358-13	Motor Protector 380V-50Hz(THA)	1	KA313-GCZL103	(H.C)	
	053-254-18	Motor Protector 380/400/415V-50Hz	1	KA313-GCXL103	(H.C)	
	053-254-18	Motor Protector 380/400/415V-50Hz(EUR)	1	KA313-GCXL103	(H.C)	
	053-254-18	Motor Protector 440V-60Hz	1	KA313-GCXL103	(H.C)	
19	143-087-23	Pan Screw (w/Spring Washer)	2	M4x10	SWRM	
20	141-004-59	Hex.Nut	1	M6	SWRM	
21	009-159-15	Terminal	1	R-2-6	CU	
22	129-003-18	Stopper	1	M6x160(11/20)	SS	
23	147-066-15	Impeller Key	1	10x8x22l	SUS420	
24	143-042-13	Pan Screw	3	M6x10	SWRM	
25	062-196-19	Bearing Fixing Washer	3	d8xd20.5x2.3t	SS	
26	052-112-10	Bearing	1	6309ZZC3		
27	146-027-11	Retaining Ring	1	C45	SK5	
28	122-333-19	O-Ring	1	170xd3.1	NBR	
29	060-375-18	Bearing Housing	1		FC	
30	140-098-15	Hex.Bolt	3	M12x35	SUS304	
31	143-070-23	Pan Screw	2	M5x6	SWRM	
32	030-156-18	Oil Lifter	1	H-35(A)(T)	Resin	
33	143-070-10	Pan Screw	3	M5x6	SWRM	
34	030-150-12	Seal Stopper	1	H-35(A)(T)	SPCC	
35	122-246-14	O-Ring	1	180xd3.1	NBR	

PARTS LIST		SEWAGE & WASTEWATER PUMPS			3/26/2013	
ITEM	PART No.	DESCRIPTION	QTY	SIZE	MATERIAL	NOTES

EXPLODED VIEW

10043. 7H-53/63
8043. 7H-53/63



C-00486-1