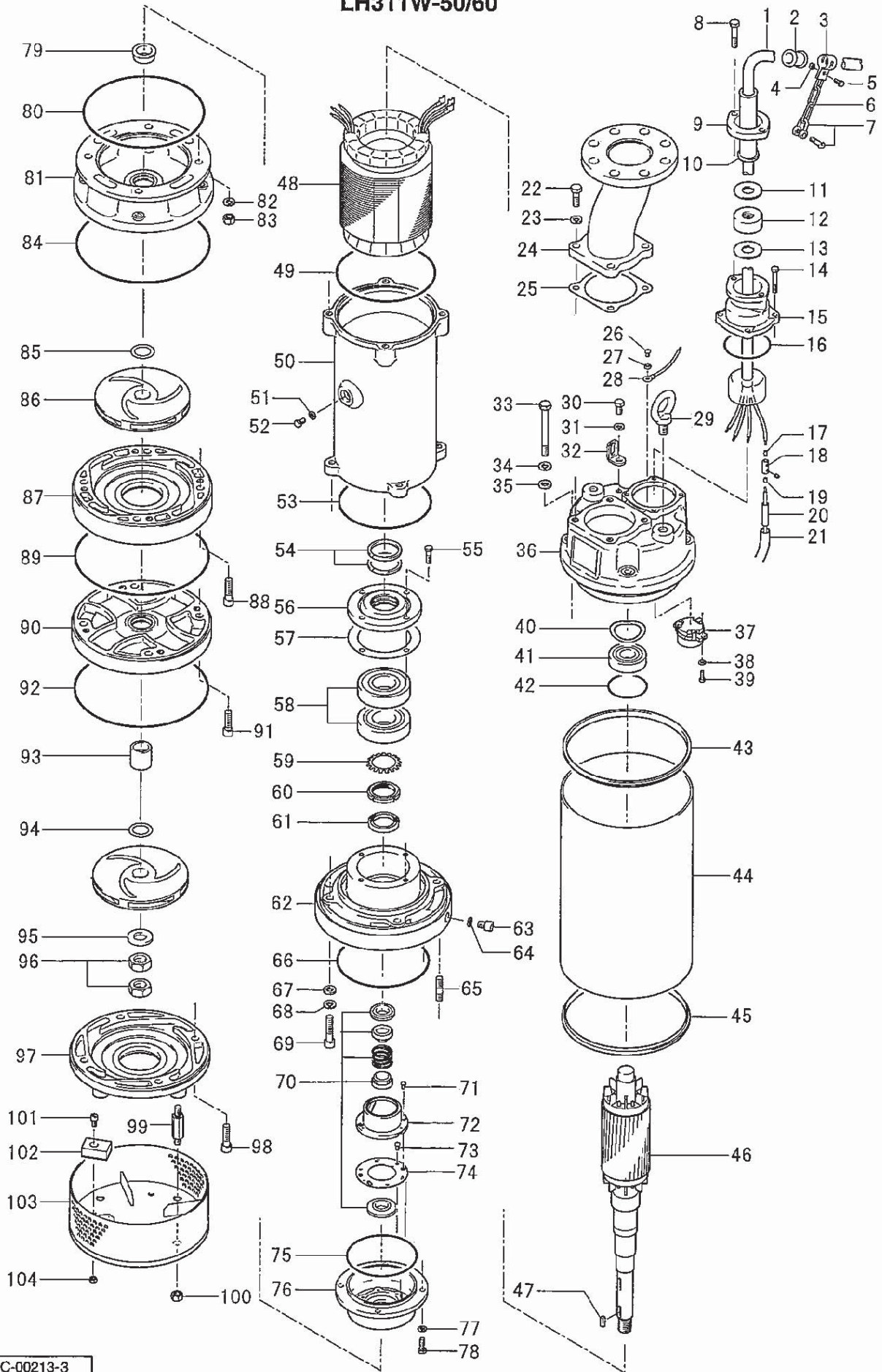


# EXPLODED VIEW

LH311W-50/60



MODEL NO

LH311W-50/60

No	PARTS NO.	DESCRIPTION	Q'TY	SPECIFICATION	MATERIALS	WEIGHT(kg)
1	801-00187549-9	Cabtyre Cable Set (20m)380V-50Hz	1	2PNCTF4Cx5.5mm2	GHZ	
	801-00187549-9	Cabtyre Cable Set (20m)400/415V-50Hz	1	2PNCTF4Cx5.5mm2	GHZ	
	801-00100512-9	Cabtyre Cable Set (20m)400/415V-50Hz(EUR)	1	H07RNF4Gx4mm2(Gray)	GHZ(HAR)	
	801-00100800-9	Cabtyre Cable Set (20m)400/415V-50Hz(EUR,NSU)	1	NSSHOU4Gx4mm2	GHZ(HAR)	
	801-00187549-9	Cabtyre Cable Set (20m)525V-50Hz(ZAF)	1	2PNCTF4Cx5.5mm2	GHZ	
2	801-01012210-9	Cable Clip Rubber 380V-50Hz	1	No.2	NBR	0.01
	801-01012210-9	Cable Clip Rubber 400/415V-50Hz	1	No.2	NBR	0.01
	801-01012210-9	Cable Clip Rubber 400/415V-50Hz(EUR)	1	No.2	NBR	0.01
	801-01012119-9	Cable Clip Rubber 400/415V-50Hz(EUR,NSU)	1	No.1	NBR	0.02
	801-01012210-9	Cable Clip Rubber 525V-50Hz(ZAF)	1	No.2	NBR	0.01
3	801-01012018-9	Cable Clip	1	No.2-1	SPC	0.025
4	801-14100433-9	Hex.Nut	1	M6	S35C	0.001
5	801-14003237-9	Hex.Bolt	1	M6x15	SWRM	0.001
6	801-09513118-9	Chain	1	4mm(3L)	SS	0.021
7	801-01110119-9	Shackle	1	6mm	SS	
8	801-14007617-9	Hex.Bolt	2	M10x30	SUS304	0.029
9	801-00318323-9	Gland	1	GHZ-311W	FC	0.56
10	801-00210414-9	Cable Protection Tube 380V-50Hz	1	No.4	NBR	0.05
	801-00210414-9	Cable Protection Tube 400/415V-50Hz	1	No.4	NBR	0.05
	801-00210414-9	Cable Protection Tube 400/415V-50Hz(EUR)	1	No.4	NBR	0.05
	801-00210313-9	Cable Protection Tube 400/415V-50Hz(EUR,NSU)	1	No.3	NBR	
	801-00210414-9	Cable Protection Tube 525V-50Hz(ZAF)	1	No.4	NBR	0.05
11	801-00512217-9	Bush Washer	1	d23xd53.5x3.2t	SPC	0.05
12	801-00413510-9	Cable Bush 380V-50Hz	1	d21xd54x25l	SBR	0.065
	801-00413510-9	Cable Bush 400/415V-50Hz	1	d21xd54x25l	SBR	0.065
	801-00400001-9	Cable Bush 400/415V-50Hz(EUR)	1	d18xd54x26	NBR	
	801-00413510-9	Cable Bush 400/415V-50Hz(EUR,NSU)	1	d21xd54x25l	SBR	0.065
	801-00413510-9	Cable Bush 525V-50Hz(ZAF)	1	d21xd54x25l	SBR	0.065
13	801-00512217-9	Bush Washer	1	d23xd53.5x3.2t	SPC	0.05
14	801-14005510-9	Hex.Bolt	4	M8x25	SUS304	0.014
15	801-00616010-9	Stuffing Box	1	GHZ-311W	FC	1.5
16	801-12212819-9	O-Ring	1	G-85(84.4xd3.1)	NBR	0.001
17	801-00912916-9	Terminal 380V-50Hz	4	E (Small)	CU	0.001
	801-00912916-9	Terminal 400/415V-50Hz	4	E (Small)	CU	0.001
	801-00912916-9	Terminal 400/415V-50Hz(EUR)	4	E (Small)	CU	0.001
	801-00912310-9	Terminal 400/415V-50Hz(EUR,NSU)	4	P-5.5	CU	0.001
	801-00912916-9	Terminal 525V-50Hz(ZAF)	4	E (Small)	CU	0.001
18	801-00910112-9	Terminal(C/W Screw)	4	d12x(d6.6xd6.6)x25l	C3604	0.017
19	801-00912916-9	Terminal	4	E (Small)	CU	0.001
20	801-00212915-9	Heat Shrink Tube (Sold per meter)	m	EVA(d14x1t)	(V/m)	0.045
21	801-00213211-9	Heat Shrink Tube (Sold per meter)	m	A4(d17x0.27t)	(V/m)	0.015
22	801-14009916-9	Hex.Bolt	4	M12x40	SUS304	0.049
23	801-14216510-9	Spring Washer	4	M12	SUS304	0.001
24	801-03732117-9	Flanged Discharge Pipe	1	80mm(GHZ-311W)	SGP+SS	
	801-03700039-9	Center-Flange Discharge Pipe (for EUR,NSU)	1	BSPT-3(LH-W)	SGPSS	
25	801-12137318-9	Packing	1	P.C.133xd100x1t	THREE SHEET	0.004
26	801-14301416-9	Pan Screw	1	M4x8	SWRM	0.001
27	801-14212446-9	Plain Washer	1	M4	C3604	
28	801-00916615-9	Earth Terminal	1Set	8mm2x190L		
29	801-07210727-9	Eye Bolt	2	M16	SUS304	0.22
30	801-14007415-9	Hex.Bolt	1	M10x20	SUS304	0.024
31	801-14216419-9	Spring Washer	1	M10	SUS304	0.001
32	801-07010310-9	L-Shape Fitting	1	KT-55	SPC	0.038
33	801-14011216-9	Hex.Bolt	4	M12x110	SUS304	0.11
34	801-14216510-9	Spring Washer	4	M12	SUS304	0.001
35	801-14229813-9	Seal Washer	4	SM-12	SUS+NBR	0.001
36	801-05039728-9	Motor Bracket	1		FC	
37	801-05336412-9	Motor Protector 380V-50Hz	1	KA315-JKX00	(B.C)	
	801-05336412-9	Motor Protector 400/415V-50Hz	1	KA315-JKX00	(B.C)	
	801-05336412-9	Motor Protector 400/415V-50Hz(EUR)	1	KA315-JKX00	(B.C)	
	801-05336412-9	Motor Protector 400/415V-50Hz(EUR,NSU)	1	KA315-JKX00	(B.C)	
		Motor Protector 525V-50Hz(ZAF)	1			
38	801-14212420-9	Plain Washer	2	M4	SPC	0.001
39	801-14301618-9	Pan Screw	2	M4x12	SWRM	0.001
40	801-14219812-9	Wave Washer	1	6306	SK5	0.001
41	801-05210914-9	Bearing	1	6306ZC3		0.36
42	801-12224513-9	O-Ring	1	71.4xd3.1	NBR	0.001
43	801-12142213-9	Packing	1	d234.5xd245.9x12.5t	NBR	
44	801-06523217-9	Outer Cover	1	GHZ-311W	SS	
45	801-12142213-9	Packing	1	d234.5xd245.9x12.5t	NBR	
46	801-05572319-9	Rotor	1Set			
47	801-14712614-9	Impeller Key	2	7x7x20L	SUS420	
48		Stator 380V-50Hz	1Set			
		Stator 400/415V-50Hz	1Set			
		Stator 400/415V-50Hz(EUR)	1Set			
		Stator 400/415V-50Hz(EUR,NSU)	1Set			
	801-05600208-9	Stator 525V-50Hz(ZAF)	1Set			
49	801-12233713-9	O-Ring	1	183.74xd3.53	NBR	
50	801-06446417-9	Motor Frame	1		FC	
51	801-14233715-9	Seal Washer	1	SM-8	SUS+NBR	

52	801-14042111-9	Hex.Bolt	1	M8x14	SUS403	
53	801-12243118-9	O-Ring	1	171.04xd3.53	NBR	0.008
54	801-12142415-9	Packing	2	5x5.5x185l	Felt	
55	801-14005637-9	Hex.Bolt	4	M8x30	SWRM	
56	801-06220714-9	Bearing Cover	1	d54.3xd140x24t	FC	
57	801-12142314-9	Packing	1	d101xd138x1.5t	NBR	
58	801-05211816-9	Bearing	1Set	7309ADBC3		
59	801-14224212-9	Bearing Washer	1	AW09	SPCC	0.013
60	801-14107418-9	Bearing Nut	1	AN09	SS	0.115
61	801-02627117-9	Oil Seal	1	SC-40588	NBR	0.02
62	801-06041928-9	Bearing Housing	1		FC	
63	801-03511318-9	Oil Plug	1	M12x14	SUS304	0.003
64	801-12124712-9	Packing	1	d12.3xd18x2t	PE	0.001
65	801-14414217-9	Stud Bolt	4	M12x50(15/20)	SUS304	0.035
66	801-12233410-9	O-Ring	1	170xd3.8	NBR	
67	801-14229813-9	Seal Washer	4	SM-12	SUS+NBR	0.001
68	801-14216510-9	Spring Washer	4	M12	SUS304	0.001
69	801-14030619-9	Hex.Socket Cap Bolt	4	M12x55	SUS304	
70	801-02500003-9	Mechanical Seal	1	HT-3540N	SIC	0.28
71	801-14307023-9	Pan Screw	2	M5x6	SWRM	0.001
72	801-03013713-9	Oil Lifter	1	HT-3540	Resin	
73	801-14307010-9	Pan Screw	6	M5x6	SWRM	0.001
74	801-03014615-9	Seal Stopper	1	HT-3540	SPCC	0.082
75	801-12213711-9	O-Ring	1	G-130(129.4xd3.1)	NBR	0.001
76	801-02900040-9	Oil Casing	1	LH311W	FCD	
77	801-14216318-9	Spring Washer	4	M8	SUS304	0.001
78	801-14005510-9	Hex.Bolt	4	M8x25	SUS304	0.014
79	801-07121715-9	Shaft Sleeve (2nd Stage)	1	d30xd40x17t	SUS403	
80	801-12200027-9	O-Ring	1	240xd3.8	NBR	
81	801-02000121-9	Pump Casing (Upper/2nd Stage)	1	GHZ-311W(w/Labyrinth Ring)	FC+SUS	
82	801-14216510-9	Spring Washer	4	M12	SUS304	0.001
83	801-14100710-9	Hex.Nut	4	M12	SUS304	0.015
84	801-12240715-9	O-Ring	1	253.59xd3.53	NBR	
85	801-04012519-9	Impeller Shim		d31xd45.2x0.5t	SUS304	0.001
86	801-021J9912-9	Impeller (50Hz)	2	LH311W-50	HiCrFC	
87	801-021E3011-9	Impeller (60Hz)	2	LH311W-60	HiCrFC	
88	801-02085513-9	Pump Casing (Lower/2nd Stage)	1	GHZ-311W(w/Mouth Ring)	FC+HiCrFC	
89	801-14030417-9	Hex.Socket Cap Bolt	4	M12x45	SUS304	0.05
90	801-12240715-9	O-Ring	1	253.59xd3.53	NBR	
91	801-02085614-9	Pump Casing (Upper/1st Stage)	1	GHZ-311W(w/Labyrinth Ring)	FC+SUS	
92	801-14030316-9	Hex.Socket Cap Bolt	4	M12x40	SUS304	0.047
93	801-12240715-9	O-Ring	1	253.59xd3.53	NBR	
94	801-07121816-9	Shaft Sleeve (1st Stage)	1	d30xd40x40t	SUS403	
95	801-04012519-9	Impeller Shim		d31xd45.2x0.5t	SUS304	0.001
96	801-14213319-9	Plain Washer	1	M24	SUS304	
97	801-14101120-9	Hex.Nut	2	M24(H=14)	SUS304	0.07
98	801-02085715-9	Pump Casing (Lower/1st Stage)	1	GHZ-311W(w/Mouth Ring)	FC+HiCrFC	5.93
99	801-14030417-9	Hex.Socket Cap Bolt	4	M12x45	SUS304	0.05
100	801-14412123-9	Stud Bolt	4	M12x86(20/16)	SUS403	0.12
101	801-14100710-9	Hex.Nut	4	M12	SUS304	0.015
102	801-14026818-9	Hex.Socket Cap Bolt	2	M8x20	SUS304	0.014
103	801-04310017-9	Cathodic Protection Plate	2	DW(50x34x20t)	ZNP	0.21
104	801-02300122-9	Strainer Stand	1	LH311W-50/60	SS	
	801-14100518-9	Hex.Nut	2	M8	SUS304	0.001
		<Packing O-Ring Set>				
	801-17347118-9	Packing O-Ring Set	1Set	(Marked by *)		
16	801-12212819-9	O-Ring (S.Box)	1	G-85(84.4xd3.1)	NBR	0.001
25	801-12137318-9	Packing (Discharge Pipe)	1	P.C.133xd100x1t	THREE SHEET	0.004
35	801-14229813-9	Seal Washer (M.Bracket bolt)	4	SM-12	SUS+NBR	0.001
42	801-12224513-9	O-Ring (Upp. Bearing)	1	71.4xd3.1	NBR	0.001
43	801-12142213-9	Packing (M.Bracket/Out.Cover)	1	d234.5xd245.9x12.5t	NBR	
45	801-12142213-9	Packing (Out.Cover/Brg.Housing)	1	d234.5xd245.9x12.5t	NBR	
49	801-12233713-9	O-Ring (M.Bracket/M.Frame)	1	183.74xd3.53	NBR	
51	801-14233715-9	Seal Washer (Stator Set Bolt)	1	SM-8	SUS+NBR	
53	801-12243118-9	O-Ring (M.Frame/Brg.Housing)	1	171.04xd3.53	NBR	0.008
57	801-12142314-9	Packing (Brg.Cover/Brg.Housing)	1	d101xd138x1.5t	NBR	
64	801-12124712-9	Packing (Oil Plug)	1	d12.3xd18x2t	PE	0.001
66	801-12233410-9	O-Ring (Brg.Housing/O.Casing)	1	170xd3.8	NBR	
67	801-14229813-9	Seal Washer (Brg.Housing bolt)	4	SM-12	SUS+NBR	0.001
75	801-12213711-9	O-Ring (Brg.Housing/Upp. P.Casing, 2nd Stage)	1	G-130(129.4xd3.1)	NBR	0.001
80	801-12200027-9	O-Ring (Brg.Housing/Upp. P.Casing, 2nd Stage)	1	240xd3.8	NBR	
84	801-12240715-9	O-Ring (Upp. P.Casing, 2nd Stage/Low. P.Casing, 2n	1	253.59xd3.53	NBR	
89	801-12240715-9	O-Ring (Upp. P.Casing, 1st Stage/Low. P.Casing, 2n	1	253.59xd3.53	NBR	
92	801-12240715-9	O-Ring (Upp. P.Casing, 1st Stage/Low. P.Casing, 1s	1	253.59xd3.53	NBR	
		Lubricant		Turbine Oil VG32 800ml		