

PARTS PRICE LIST

LH25.5W-60

Control Number : PLPA-ILH2IWAO-01

Supersedes : -----

(04/01/96)

ITEM	PARTS NO.	DESCRIPTION	Q'TY	SIZE	MATERIAL	PRICE (\$)	NOTE
1	001-841-23	Cab-tyre Cable	1	AWG12x49"	2PNCT.F	584.60	
2	010-121-19	Cable Clip Rubber	1	No.1	NBR	1.20	
3	010-120-18	Cable Clip	1	No.2-1	SPC	5.00	
4	141-004-59	Hex. Nut	1	M6	SWRM	0.20	
5	140-032-37	Hex. Bolt	1	M6x15	SWRM	0.20	
6	095-131-18	Chain	1	4-dia	SS	1.20	
7	011-110-11	Shackle	1	6mm	SS	2.20	
8	140-060-18	Hex. Bolt	4	M8x50	SUS304	1.50	
9	006-167-17	Stuffing Box	1	No.1-3	FC	29.60	
10	122-121-12	O-Ring	1	G-50	NBR	*	
11	004-168-12	Cable Bush	1	No.2	CR	11.80	
12	008-156-19	Rubber Boot	1	No.1-3	ADC	8.10	
13	009-123-10	Solderless Sleeve	4	P-5.5	CU	0.40	
14	009-101-12	Terminal w/screw	4	12x(6.6)x25L	BSBM	4.70	
15	009-123-10	Solderless Sleeve	4	P-5.5	CU	0.40	
16	002-129-15	Heat Shrink Tube	1	NST-150	\$/3.2ft	13.30	
17	002-132-11	Heat Shrink Tube	1	NST-120	\$/3.2ft	14.80	
18	141-007-10	Hex. Nut	4	M12	SUS304	1.30	
19	142-165-10	Spring Washer	4	M12	SUS304	0.50	
20	037-320-16	Discharge Bend	1	NPT-2" Flange	SGP+SS	207.20	
21	121-413-11	Packing	1	100(P.C107)	T.Sheet	*	
22	144-420-38	Stud Bolt	4	M12x59(22/24)	SUS304	11.80	
23	140-074-15	Hex. Bolt	1	M10x20	SUS304	1.50	
24	142-164-19	Spring Washer	1	M10	SUS304	0.30	
25	070-103-10	Fitting (Shape L)	1	KT-55	SPC	4.90	
26	143-014-16	Cross Pan Screw	1	M4x8	SWRM	0.10	
27	142-124-46	Plain Washer	1	M4	BSBM	0.20	
28	009-164-13	Ground Terminal	1	3.5x190L		10.40	
29	140-087-11	Hex. Bolt	4	M10x80	SUS304	4.30	
30	142-164-19	Spring Washer	4	M10	SUS304	0.30	
31	142-297-12	Seal Washer	4	SM-10	SUS+NBR	*	
32	072-102-22	Lifting Eye Bolt	2	M12	SUS304	11.80	
33	050-396-14	Motor Bracket	1		FC	769.60	
34	053-397-14	Motor Protector	1	KA314-HKXL00	(B) 220V	270.80	
34	053-222-17	Motor Protector	1	KA314-HRXL202	(H.C) 440V	156.90	
34	053-	Motor Protector					
35	142-124-20	Plain Washer	2	M4	SPC	0.20	
36	143-016-18	Cross Pan Screw	2	M4x12	SWRM	0.10	
37	142-197-11	Wave Washer	1	#6305	SK-5	2.40	
38	052-108-13	Bearing	1	6305ZZC3		14.50	
39	122-244-12	O-Ring	1	61.4x3.1	NBR	*	
40	121-421-12	Packing	1	218x229.4x12.5t	NBR	*	
41	065-231-16	Outer Cover	1	LH25.5W	SS	325.60	
42	121-421-12	Packing	1	218x229.4x12.5t	NBR	*	
43	058-151-19	L. Wire Prot. Plate	1	85x125x1.5t	Bakelite	65.10	
44	056-480-14	Stator	1		220V	817.00	
44	056-	Stator	1		440/575V	939.50	
45	122-335-11	O-Ring	1	177.39x3.53	NBR	*	
46	064-463-16	Motor Frame	1		FC	843.60	
47	122-329-12	O-Ring	1	151.99x3.53	NBR	*	
48	055-722-18	Rotor and Shaft	1			888.00	
49	147-125-13	Impeller Key	1	5x5x15L	SUS	7.40	
50	140-032-37	Hex. Bolt	3	M6x15	SWRM	0.20	
51	062-206-13	Retainer	1	72x110x4.5t	SS	20.70	
52	052-147-14	Bearing	1	6307ZZD2C3		73.30	
53	146-022-16	Stop Ring	1	C35	SK-5	2.70	
54	060-418-14	Bearing Housing	1		FC	636.40	
55	121-247-12	Packing	1	11.8x18x2t	Poly Sheet	*	
56	035-113-18	Oil Plug	1	M12x14(Socket)	SUS304	3.60	
57	142-297-12	Seal Washer	4	SM-10	SUS+NBR	*	
58	142-164-19	Spring Washer	4	M10	SUS304	0.30	
59	140-292-11	Hex. Socket Bolt	4	M10x55	SUS304	7.40	
60	144-404-36	Stud Bolt	4	M10x60(20/20)	SUS304	11.80	
61	122-009-13	O-Ring	4	P-10A	NBR	*	
62	025-283-19	Mechanical Seal	1	HT-2530	SiC+CCBN	260.50	
63	143-027-12	Cross Pan Screw	4	M5x8	SWRM	0.10	
64	030-127-10	Oil Ring	1	HT-2530 use	SPCC	7.40	
65	122-328-11	O-Ring	1	150x3.1	NBR	*	
66	029-344-11	Oil Casing	1	LH25.5W	FC	118.40	
67	140-269-19	Hex. Socket Bolt	4	M8x25	SUS304	1.60	
68	122-328-11	O-Ring	1	150x3.1	NBR	*	
69	071-215-13	Upper Shaft Sleeve	1	20x28x17.5	SUS403	29.60	
70	122-311-11	O-Ring	1	220x3.5	NBR	*	
71	020-850-18	Upper P.Casing(U/Half)	1	w/Labyrinth Ring	FC+SUS	367.00	
72	122-311-11	O-Ring	1	220x3.5	NBR	*	
73	142-164-19	Spring Washer	4	M10	SUS304	0.30	

PARTS PRICE LIST

LH25.5W-60

Control Number : PLPA-ILH2IWAO-01

Supersedes : -----

(04/01/96)

ITEM	PARTS NO.	DESCRIPTION	Q'TY	SIZE	MATERIAL	PRICE (\$)	NOTE
74	141-006-19	Hex. Nut	4	M10	SUS304	1.00	
75	122-447-17	Back-up Ring	1) -28	Resin	7.40	
76	122-027-17	O-Ring	1	P-28	NBR	*	
77	040-106-27	Impeller Shim	1	20.2x30x0.3t	SUS304	1.50	
78	021-E28-16	Impeller	2	60Hz	HICRFC	355.20	
79	020-851-19	Upper P.Casing(L/Half)	1	w/Mouth Ring	FC+HICR	417.40	
80	122-311-11	O-Ring	1	220x3.5	NBR	*	
81	140-272-15	Hex. Socket Bolt	2	M12 eye-bolt	SUS304	11.80	
82	020-852-10	Lower P.Casing(U/Half)	1	w/Labyrinth Ring	FC+SUS	293.00	
83	122-311-11	O-Ring	1	220x3.5t	NBR	*	
84	140-271-14	Hex. Socket Bolt	4	M8x35	SUS304	2.10	
85	071-216-14	Lower Shaft Sleeve	1	20x28x37t	SUS403	35.50	
86	122-447-17	Back-up Ring	1	P-28	Resin	7.40	
87	122-027-17	O-Ring	1	P-28	NBR	*	
88	040-106-27	Impeller Shim	1	20.2x30x0.3t	SUS304	1.50	
89	142-130-16	Plain Washer	1	M16	SUS304	0.80	
90	141-008-11	Hex. Nut	2	M16	SUS304	3.00	
91	020-853-11	Lower P.Casing(L/Half)	1	w/Mouth Ring	FC+HICR	387.80	
92	140-271-14	Hex. Socket Bolt	4	M8x35	SUS304	2.10	
93	144-112-18	Stud Bolt	4	M8x59(15/22)	SUS403	3.30	
94	023-402-10	Strainer Stand	1	LH25.5	SS	355.20	
95	142-163-18	Spring Washer	4	M8x	SUS304	0.20	
96	141-005-18	Hex. Nut	4	M8	SUS304	0.50	
97	140-266-16	Hex. Socket Bolt	2	M8x16	SUS304	1.60	
98	043-100-17	Cathodic Prot. Plate	2		ZNP	14.80	
99	141-005-18	Hex. Nut	2	M8	SUS304	0.50	
	173-470-17	Packing O-Ring Set	1	(*)		386.30	

* Pricing in U.S. currency, and subject to change without notice.

* Items with * prices are available only in sets.



EXPLODED VIEW

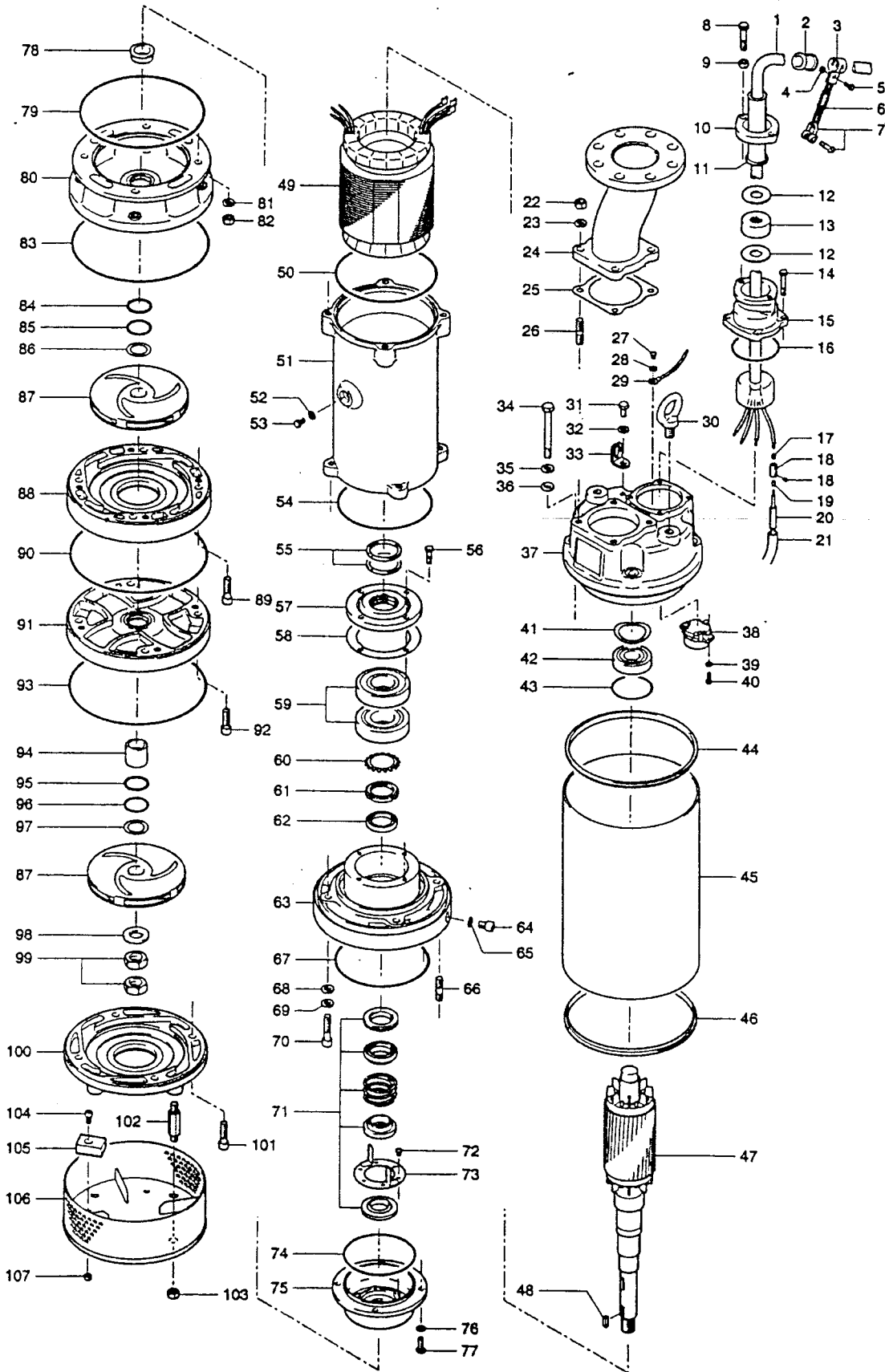
Control Number :
DREV-ILH3KWA0-01

Model : LH311W-60

Supersedes :

Submersible Dewatering Pump
(High Head - Double Stage)

04-01-96



TSURUMI (AMERICA), INC.

PARTS PRICE LIST

LH311W-60

Control Number : FLPA-ILH3KWA0-01

Supersedes : -----

(04/01/96)

ITEM	PARTS NO.	DESCRIPTION	Q'TY	SIZE	MATERIAL	PRICE (\$)	NOTE
1	001-411-14	Cab-tyre Cable	1	AWG10x49'	2PNCT.Fx4c	1,172.90	
2	010-122-10	Cable Clip Rubber	1	N0.2	NBR	1.20	
3	010-120-18	Cable Clip	1	N0.2-1	SPC	5.00	
4	141-004-33	Hex. Nut	1	M6	S35C	0.20	
5	140-032-37	Hex. Bolt	1	M6x15	SWRM	0.20	
6	095-131-18	Chain	1	4-dia(3-rinks)	SS	1.20	
7	011-110-11	Shackle	1	6mm	SS	2.20	
8	140-081-31	Hex. Bolt	2	M10x50	SUS304	2.50	
9	141-006-19	Hex. Nut	2	M10	SUS304	1.00	
10	003-183-10	Gland	1	LH311W	FC	79.90	
11	002-103-26	Cable Prot. Tube	1	No.3	NR	2.40	
12	005-122-17	Bush Washer	2	23x53.5x3.2t	SPC	5.90	
13	004-129-11	Cable Bush	1	22.5x54x25L	NBR	20.70	
14	140-055-10	Hex. Bolt	4	M8x25	SUS304	0.80	
15	006-160-10	Stuffing Box	1	LH311W	FC	136.20	
16	122-128-19	O-Ring	1	G-85	NBR	*	
17	009-129-16	Solderless Sleeve	4	E-small	CU	0.40	
18	009-101-12	Terminal	4	12x(6.6)x25L	BSBM	4.70	
19	009-129-16	Solderless Sleeve	4	E-small	CU	0.40	
20	002-129-15	Heat Shrink Tube	1	NST-150	S/3.2ft	13.30	
21	002-132-11	Heat Shrink Tube	1	NST-120	S/3.2ft	14.80	
22	141-007-10	Hex. Nut	4	M12	SUS304	1.30	
23	142-165-10	Spring Washer	4	M12	SUS304	0.50	
24	037-321-17	Discharge Bend	1	3" LH311W	SGP+SS	296.00	
25	121-373-18	Packing	1	P.C.133x100x1t	T. Sheet	*	
26	144-420-38	Stud Bolt	4	M12x59(22/24)	SUS304	11.80	
27	143-014-16	Cross Pan Screw	1	M4x8	SWRM	0.10	
28	142-124-46	Spring Washer	1	M4	BSBM	0.20	
29	009-166-15	Ground Terminal	1	8x190L		11.80	
30	072-107-27	Lifting Eye-Bolt	2	M16	SUS304	19.20	
31	140-074-15	Hex. Bolt	1	M10x20	SUS304	1.50	
32	142-164-19	Spring Washer	1	M10	SUS304	0.30	
33	070-103-10	Stay (Shape L)	1	KT-55	SPC	4.90	
34	140-112-16	Hex. Bolt	4	M12x110	SUS304	6.20	
35	142-165-10	Spring Washer	4	M12	SUS304	0.50	
36	142-298-13	Seal Washer	4	SM-12	SUS+NBR	*	
37	050-397-15	Motor Bracket	1		FC	1,258.00	
38	053-332-11	Motor Protector	1	KA315-JNX00-F	(B.C)220V	167.20	
38	053-364-12	Motor Protector	1	KA315-JKX00	(B.C)440V	397.20	
38	053-362-10	Motor Protector	1		575V		
39	142-124-20	Plain Washer	2	M4	SPC	0.20	
40	143-016-18	Cross Pan Screw	2	M4x12	SWRM	0.10	
41	142-198-12	Wave Washer	1	#6306	SK-5	2.40	
42	052-109-14	Bearing	1	6306ZZC3		17.90	
43	122-245-13	O-Ring	1	71.4x3.1	NBR	*	
44	121-422-13	Packing	1	234.5x245.9x12.5	NBR	*	
45	065-232-17	Outer Cover	1	LH311W	SS	444.00	
46	121-422-13	Packing	1	234.5x245.9x12.5	NBR	*	
47	055-723-19	Rotor and Shaft	1			1,213.60	
48	147-126-14	Impeller Key	1	7x7x20L	SUS	7.40	
49	056-629-17	Stator	1			1,613.20	
50	122-337-13	O-Ring	1	183.74x3.35	NBR	*	
51	064-464-17	Motor Frame	1		FC	1,169.20	
52	142-337-15	Seal Washer	1	SM-8	SUS+NBR	*	
53	140-421-11	Hex. Bolt	1	M8x14	SUS403	1.50	
54	122-431-18	O-Ring	1	171.04x3.53	NBR	*	
55	121-424-15	Packing	2	5x5.5x185L	Felt	16.30	
56	140-056-37	Hex. Bolt	4	M8x30	SWRM	0.40	
57	062-207-14	Bearing Cover	1	54.3x140x24t	FC	192.40	
58	121-423-14	Packing	1	101x138x1.5t	NBR	*	
59	052-1181-6	Bearing - 118-16	1	7309ADBC3		205.70	
60	142-242-12	Bearing Washer	1	AW09	SPCC	5.00	
61	141-074-18	Bearing Nut	1	AN09	SS	17.00	
62	026-271-17	Oil Seal	1	SC-40588	NBR	22.50	
63	060-419-15	Bearing Housing	1		FC	1,065.60	
64	035-113-18	Oil Plug	1	M12x14(Socket)	SUS304	3.60	
65	121-247-12	Packing	1	1.8x18x2t	Poly Sheet	*	
66	144-142-17	Stud Bolt	4	M12x50(15/20)	SUS304	7.10	
67	122-334-10	O-Ring	1	170x3.8	NBR	*	
68	142-298-13	Seal Washer	4	SM-12	SUS+NBR	*	

PARTS PRICE LIST

LH311W-60

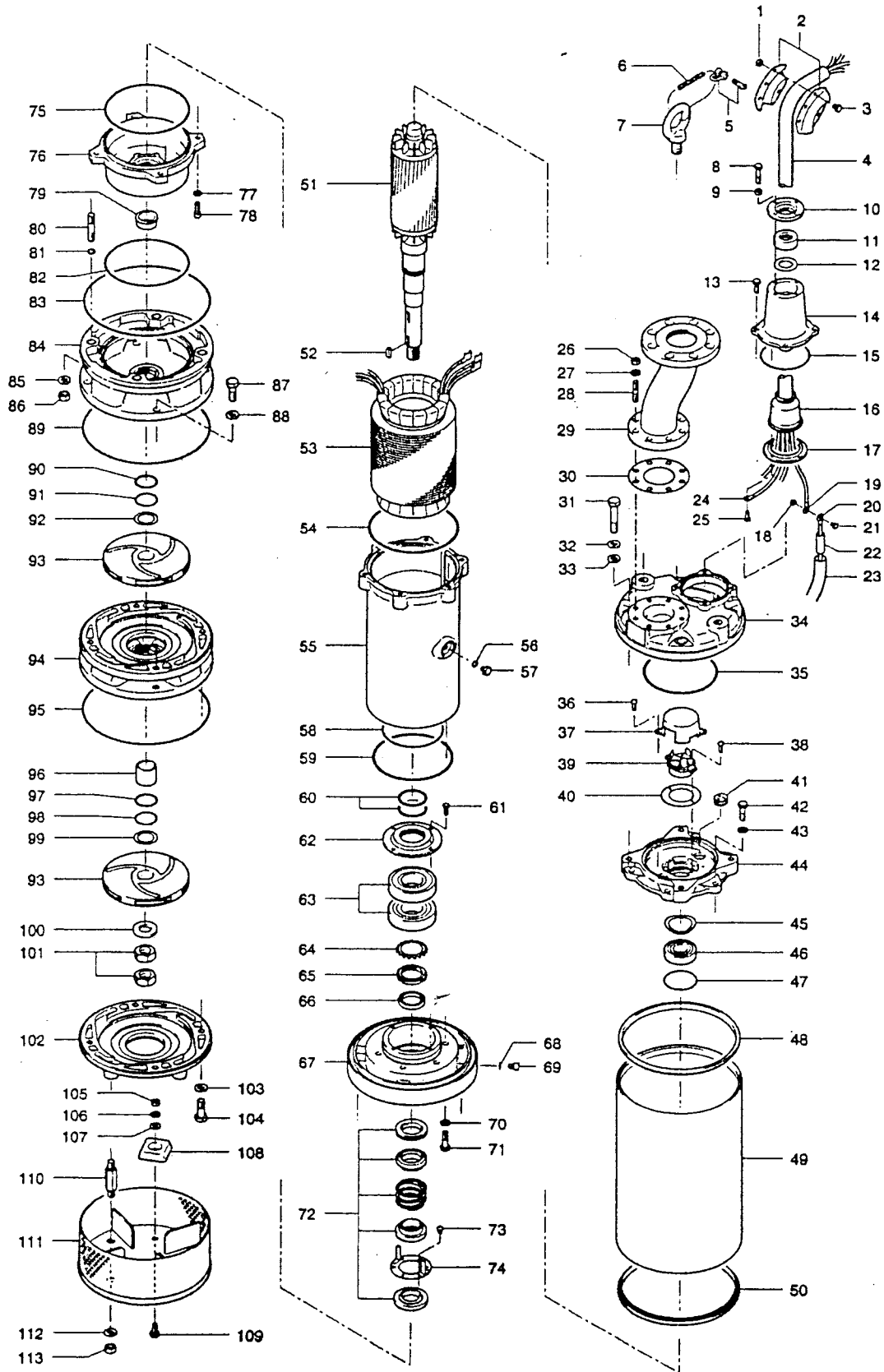
(04/01/96)

Control Number : PLPA-ILH3KWA0-01

Supersedes : -----

ITEM	PARTS NO.	DESCRIPTION	Q'TY	SIZE	MATERIAL	PRICE (\$)	NOTE
69	142-165-10	Spring Washer	4	M12	SUS304	0.50	
70	140-306-19	Hex. Socket Bolt	4	M12x55	SUS304	8.30	
71	025-286-12	Mechanical Seal	1	HT-3540	SiC+CCBN	444.00	
72	143-027-12	Cross Pan Screw	6	M5x8	SWRM	0.10	
73	030-129-12	Oil Ring	1	HT-3540 use	SPCC	8.30	
74	122-137-11	O-Ring	1	G-130	NBR	*	
75	029-343-10	Oil Casing	1	LH311W	FC	133.20	
76	142-163-18	Spring Washer	4	M8	SUS304	0.20	
77	140-055-10	Hex. Bolt	4	M8x25	SUS304	0.80	
78	071-217-15	Upper Shaft Sleeve	1	30x40x17t	SUS403	35.50	
79	122-250-11	O-Ring	1	230x3.8	NBR	*	
80	020-854-12	Upper Pump Casing/U.Half	1	w/Labyrinth ring	FC+SUS	494.30	
81	142-165-10	Spring Washer	4	M12	SUS304	0.50	
82	141-007-10	Hex. Nut	4	M12	SUS304	1.30	
83	122-407-15	O-Ring	1	253.59x3.53	NBR	*	
84	122-448-18	Back-up Ring	1	P-40	Resin	11.80	
85	122-039-12	O-Ring	1	P-40	NBR	*	
86	040-125-19	Impeller Shim	1	31x45.2x0.5t	SUS304	2.10	
87	021-E30-11	Impeller	2	60Hz	HICRFC	532.80	
88	020-855-13	Upper Pump Casing/L.Half	1	w/mouth ring	FC+HICR	485.40	
89	140-304-17	Hex. Socket Bolt	4	M12x45	SUS304	6.80	
90	122-407-15	O-Ring	1	253.59x3.53	NBR	*	
91	020-856-14	Lower Pump Casing/U.Half	1	w/Labyrinth Ring	FC+SUS	316.70	
92	140-303-16	Hex. Socket Bolt	4	M12x40	SUS304	6.80	
93	122-407015	O-Ring	1	253.59x3.53	NBR	*	
94	071-218-16	Lower Shaft sleeve	1	30x40x40t	SUS403	44.40	
95	122-448-18	Back-up Ring	1	P-40	Resin	11.80	
96	122-039-12	O-Ring	1	P-40	NBR	*	
97	040-125-19	Impeller Shim	1	31x45.2x0.5t	SUS304	2.10	
98	142-133-19	Plain Washer	1	M24	SUS304	2.20	
99	141-011-20	Hex. Nut	2	M24 (B=14)	SUS304	14.80	
100	020-857-15	Lower Pump Casing/L.Half	1	w/mouth ring	FC+HICR	426.20	
101	140-304-17	Hex. Socket Bolt	4	M12x45	SUS304	6.80	
102	144-121-23	Stud Bolt	4	M12x86 (16/20)	SUS403	11.20	
103	141-007-10	Hex. Nut	4	M12	SUS304	1.30	
104	140-266-16	Hex. Socket Bolt	2	M8x16	SUS304	1.60	
105	043-100-17	Cathodic Prot. Plate	2		ZNP	14.80	
106	023-403-11	Strainer Stand	1	LH311W	SS	532.80	
107	141-005-18	Hex. Nut	2	M8	SUS304	0.50	
	173-471-18	Packing O-Ring Set	1	(*)		532.80	

- Pricing in U.S. currency, and subject to change without notice.
- Items with * prices are available only in sets.



PARTS PRICE LIST

LH322W-60

Control Number : PLPA-ILH3NWA0-01

Supersedes : -----

(04/01/96)

ITEM	PARTS NO.	DESCRIPTION	Q'TY	SIZE	MATERIAL	PRICE (\$)	NOTE
1	010-143-10	Cable Clip	1	No.5	SPC	17.80	
2	141-005-18	Hex. Nut	3	M8	SUS304	0.50	
3	140-054-19	Hex. Bolt	3	M8x20	SUS304	0.80	
4	001-302-11	Cab-tyre Cable	1	AWG4x49' x 4c	2PNCT.F	2,664.00	
5	011-110-11	Shackle	1	6mm	SS	2.20	
6	095-100-18	Chain	1	5-dia	SS	4.40	
7	072-103-23	Lifting Eye Bolt	2	M24	SUS304	59.20	
8	140-058-42	Hex. Bolt	4	M8x40	SUS304	1.90	
9	141-005-18	Hex. Nut	4	M8	SUS304	0.50	
10	003-164-15	Gland	1	KRS-822	FC	19.50	
11	004-134-19	Cable Bush	1	33x58.5x24L	NBR	3.80	
12	005-123-18	Bush Washer	1	35x57x3.2t	SPC	2.70	
13	140-076-59	Hex. Bolt	4	M10x30	SUS410	1.60	
14	006-119-27	Stuffing Box	1	KRS-8L	FC	82.30	
15	122-135-19	O-Ring	1	G-120	NBR	*	
16	008-132-19	Rubber Boot	1	KRS822	NBR	13.60	
17	003-149-14	Lower Gland	1	No.5	FC	9.20	
18	141-004-46	Hex. Nut	3	M6	BSBM	0.20	
19	009-168-17	Solderless Terminal	3	R-22-S6	CU	1.50	
20	009-107-18	Solderless Terminal	3	R-14-6	CU	1.20	
21	140-029-31	Hex. Bolt	3	M6x10	BSBM	0.90	
22	002-115-18	Heat Shrink Tube	1	NST-150	\$/3.2ft	14.80	
23	002-116-19	Heat Shrink Tube	1	NST-120	\$/3.2ft	17.80	
24	009-168-17	Solderless Terminal	1	R-22-S6	CU	1.50	
25	140-033-12	Hex. Bolt	4	M6x16	SUS304	0.30	
26	141-007-10	Hex. Nut	8	M12	SUS304	1.30	
27	142-165-10	Spring Washer	8	m12	SUS304	0.50	
28	144-422-30	Stud Bolt	8	M12x64(22/24)	SUS304	11.80	
29	037-350-15	Discharge Bend	1	NPT-3"	SGP+SS	651.20	
30	121-447-14	Packing	1	78x152x1t	T. Sheet	*	
31	140-134-14	Hex. Bolt	4	M16x90	SUS304	8.30	
32	142-166-11	Spring Washer	4	M16	SUS304	1.00	
33	142-353-17	Seal Washer	4	SM-16	SUS+NBR	*	
34	051-222-11	Head Cover	1		FC	1,184.00	
35	122-147-14	O-Ring	1	G-180	NBR	*	
36	143-030-18	Cross Pan Screw	2	M5x14	SWRM	0.10	
37	053-227-12	Motor Protector	1	KA316-NCZL00	(B.C)220V	916.10	
38	053-424-11	Motor Protector	1	KA316-NSTL00	(B.C)440V	651.20	
39	053-366-14	Motor Protector	1	KA316NEZL00	(B.C)575V	916.10	
40	058-168-19	Protector Stay	1	62x100x0.8t	SPC	59.20	
41	016-113-19	L.Wire Prot. Bush	2	GH-422	SBR	13.60	
42	140-100-11	Hex. Bolt	6	M12x45	SUS304	2.80	
43	142-165-10	Spring Washer	6	M12	SUS304	0.50	
44	050-407-19	Motor Bracket	1		FC	1,036.00	
45	142-199-13	Wave Washer	1	#6208/6307	SK-5	2.70	
46	052-110-18	Bearing	1	6307ZZC3		24.30	
47	122-127-18	O-Ring	1	G-80	NBR	*	
48	121-454-14	Packing	1	291x307.8x16.4t	NBR	*	
49	065-340-19	Outer Cover	1		SS	858.40	
50	121-454-14	Packing	1	291x307.8x16.4	NBR	*	
51	055-724-10	Rotor and Shaft	1			2,960.00	
52	147-132-13	Impeller Key	2	10x8x25L	SUS	59.20	
53	056-422-18	Stator	1		220V	3,482.40	
54	056-	Stator	1		440/575V	4,004.90	
55	064-389-17	Motor Frame	1		FC	1,216.60	
56	122-259-10	O-Ring	1	12x3	NBR	*	
57	144-490-13	Stator Set Bolt	1	M12(B=21)	SUS403	4.70	
58	122-171-17	O-Ring	1	V-150	NBR	*	
59	122-150-10	O-Ring	1	G-195	NBR	*	
60	121-463-16	Felt Packing	2	4x4.4x217L	Felt	22.20	
61	140-055-49	Hex. Bolt	4	M8x25	SWRM	0.40	
62	062-210-10	Retainer	1	55.5x160x22t	FC	118.40	
63	052-120-11	Bearing	1	7311ADBC3		341.30	
64	142-244-14	Bearing Washer	1	AW11	SPCC	7.40	
65	141-076-10	Bearing Nut	1	AN11	SS	23.40	
66	026-272-18	Oil Seal	1	SC-50689	NBR	23.10	
67	060-420-19	Bearing Housing	1		FC	1,613.20	
68	121-247-12	Packing	2	11.8x18x2t	Poly Sheet	*	
69	035-113-18	Oil Plug	2	M12x14	SUS304	3.60	
70	142-165-10	Spring Washer	6	M12	SUS304	0.50	
71	140-100-11	Hex. Bolt	6	M12x45	SUS304	2.80	
72	025-287-13	Mechanical Seal	1	HT-4550	SiC+CCBN	708.90	
73	143-027-12	Cross Pan Screw	6	M5x8	SWRM	0.10	
74	030-130-16	Oil Ring	1	HT-4550 use	SPCC	8.30	
75	122-251-12	O-Ring	1	205x3.8	NBR	*	
76	029-345-12	Oil Casing	1	LH322W/430W	FC	281.20	

PARTS PRICE LIST

LH322W-60

Control Number : PLPA-ILH3NWA0-01

Supersedes : -----

(04/01/96)

ITEM	PARTS NO.	DESCRIPTION	Q'TY	SIZE	MATERIAL	PRICE (\$)	NOTE
77	142-164-19	Spring Washer	4	M10	SUS304	4.70	
78	140-286-12	Hex. Bolt	4	M10x30	SUS304	4.70	
79	071-299-11	Upper Shaft Sleeve	1	40x50x23t	SUS403	103.60	
80	144-438-26	Stud Bolt	4	M16x79 (24/28)	SUS304	14.80	
81	122-016-13	O-Ring	4	P-16	NBR	*	
82	122-251-12	O-Ring	1	205x3.8	NBR	*	
83	122-295-18	O-Ring	1	310x3.8	NBR	*	
84	020-893-13	Upper Pump Casing	1	W/Labyrinth ring	FC+SUS	1,213.60	
85	142-166-11	Spring Washer	4	M16	SUS304	1.00	
86	141-008-11	Hex. Nut	4	M16	SUS304	3.00	
87	140-125-12	Hex. Bolt	4	M16x45	SUS304	4.70	
88	142-166-11	Spring Washer	4	M16	SUS304	1.00	
89	122-295-18	O-ring	1	310x3.8	NBR	*	
90	122-449-19	Back-up Ring	1	P-50	Teflon	11.80	
91	122-046-12	O-Ring	1	P-50	NBR	*	
92	040-126-10	Impeller Shim	1	41.5x59x0.3t	SUS304	2.10	
93	021-F91-11	Impeller	2	60Hz	HICRFC	976.80	
94	020-894-14	Middle Pump Casing	1	w/mouth ring	FC	1,539.20	
95	122-295-18	O-Ring	1	310x3.8	NBR	*	
96	071-300-16	Lower Shaft Sleeve	1	40x50x47t	SUS403	103.60	
97	122-449-19	Back-up Ring	1	P-50	Teflon	11.80	
98	122-046-12	O-Ring	1	P-50	NBR	*	
99	040-126-10	Impeller Shim	1	41.5x59x0.3t	SUS304	2.10	
100	142-134-10	Plain Washer	1	M30	SUS304	9.00	
101	141-012-50	Hex. Nut	2	M30 (H=18)	SUS304	20.70	
102	020-895-15	Lower Pump Casing	1	w/mouth ring	FC+HICR	828.80	
103	142-166-11	Spring Washer	4	M16	SUS304	1.00	
104	140-126-13	Hex. Bolt	4	M16x50	SUS304	5.00	
105	141-007-10	Hex. Nut	2	M12	SUS304	1.30	
106	142-165-10	Spring Washer	2	M12	SUS304	0.50	
107	142-129-12	Plain Washer	2	M12	SUS304	0.50	
108	043-102-19	Cathodic Prot. Plate	2	AB-1HS	AL	29.60	
109	140-096-13	Hex. Bolt	2	M12x25	SUS304	2.10	
110	144-128-17	Stud Bolt	4	M16x110 (24/24)	SUS304	35.50	
111	023-437-14	Strainer Stand	1	322W	SS	1,213.60	
112	142-166-11	Spring Washer	4	M16	SUS304	1.00	
113	141-008-11	Hex. Nut	4	M16	SUS304	3.00	
	173-487-17	Packing O-Ring Set	1	(*)		562.40	

- Pricing in U.S. currency, and subject to change without notice.
- Items with * prices are available only in sets.



EXPLODED VIEW

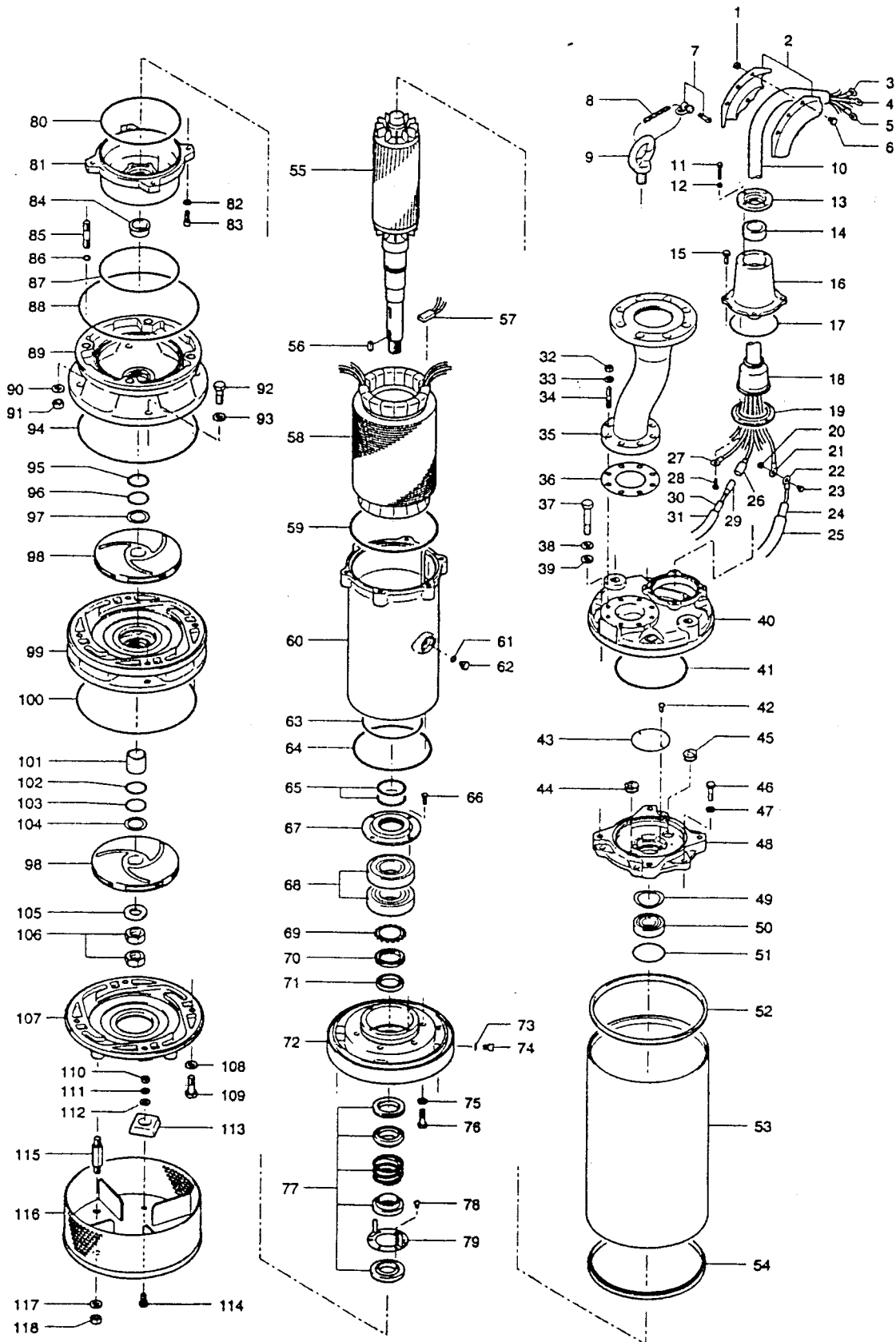
Control Number :
DREV-ILH4PWA0-01

Model : LH430W-60

Supersedes :

Submersible Dewatering Pump
(High Head - Double Stage)

04-01-96



TSURUMI (AMERICA), INC.

PARTS PRICE LIST

LH430W-60

Control Number : PLPA-ILH4PWA0-01 Supersedes : ----- (04/01/96)

ITEM	PARTS NO.	DESCRIPTION	Q'TY	SIZE	MATERIAL	PRICE (\$)	NOTE
1	141-006-19	Hex. Nut	3	M10	SUS304	1.00	
2	010-103-21	Cable Clip	1	No.4	SPC	17.00	
3	009-117-11	Solderless Terminal	6	R-14-6	CU	1.50	
4	009-107-18	Solderless Terminal	1	R-14-6	CU	1.20	
5	009-116-10	Solderless Terminal	2	R-2-4	CU	0.40	
6	140-074-15	Hex. Bolt	3	M10x20	SUS304	1.50	
7	011-110-11	Shackle	1	6mm	SS	2.20	
8	095-100-18	Chain	1	5-dia	SS	4.40	
9	072-103-23	Lifting Eye Bolt	2	M24	SUS304	59.20	
10	001-201-19	Cab-tyre Cable	1	AWG4x49'	2PNCT.Fx9c	4,292.00	
11	140-058-42/3	Hex. Bolt	4	M8x40	SUS304	1.20	1-20
12	141-005-18	Hex. Nut	4	M8	SUS304	0.50	
13	003-106-19	Gland	1	No.5	FC	12.60	
14	004-153-14	Cable Bush	1	39x58x25.5L	NBR	16.30	
15	140-076-59	Hex. Bolt	4	M10x30	SUS410	1.60	
16	006-119-27	Stuffing Box	1	KRS-8L	FC	82.30	
17	122-135-19	O-Ring	1	G-120	NBR	*	
18	008-135-12	Rubber Boot	1	LH430W	NBR	17.80	
19	003-149-14	Lower Gland	1	No.5	FC	9.20	
20	141-004-46	Hex. Nut	3	M6	BSBM	0.20	
21	009-168-17	Solderless Terminal	3	R-22-S6	CU	1.50	
22	009-107-18	Solderless Terminal	3	R-14-6	CU	1.20	
23	140-029-31	Hex. Bolt	3	M6x10	BSBM	0.90	
24	002-115-18	Heat Shrink Tube	1	NST-150	\$/3.2ft	14.80	
25	002-116-19	Heat Shrink Tube	1	NST-120	\$/3.2ft	17.80	
26	009-114-18	Pin Terminal	2	PC-4020M		1.20	
27	009-107-18	Solderless Terminal	1	R-14-6	CU	1.20	
28	140-033-12	Hex. Bolt	4	M6x16	SUS304	0.30	
29	009-115-19	Pin Terminal	2	PC-4020F		1.20	
30	002-128-14	Heat Shrink Tube	1	NST-150	\$/3.2ft	11.80	
31	002-134-13	Heat Shrink Tube	1	13x0.3t	\$/3.2ft	13.30	
32	141-007-10	Hex. Nut	8	M12	SUS304	1.30	
33	142-165-10	Spring Washer	8	m12	SUS304	0.50	
34	144-422-30	Stud Bolt	8	M12x64(22/24)	SUS304	11.80	
35	037-351-16	Discharge Bend	1	NPT-4"	SGP+SS	725.20	
36	121-447-14	Packing	1	78x152x1t	T. Sheet	*	
37	140-134-14	Hex. Bolt	4	M16x90	SUS304	8.30	
38	142-166-11	Spring Washer	4	M16	SUS304	1.00	
39	142-353-17	Seal Washer	4	SM-16	SUS+NBR	*	
40	051-222-11	Head Cover	1		FC	1,184.00	
41	122-147-14	O-Ring	1	G-180	NBR	*	
42	143-028-13	Cross Pan Screw	2	M5x10	SWRM	0.10	
43	214-006-18	Blind Cover	1	100x1.6t	SPC	44.40	
44	016-114-10	L. Wire Prot.Bush	1	GH-637(5c)	SBR	17.00	
45	016-113-19	L. Wire Prot. Bush	2	GH-422	SBR	13.60	
46	140-100-11	Hex. Bolt	6	M12x45	SUS304	2.80	
47	142-165-10	Spring Washer	6	M12	SUS304	0.50	
48	050-407-19	Motor Bracket	1		FC	1,036.00	
49	142-199-13	Wave Washer	1	#6208/6307	SK-5	2.70	
50	052-110-18	Bearing	1	6307ZZC3		24.30	
51	122-127-18	O-Ring	1	G-80	NBR	*	
52	121-454-14	Packing	1	291x307.8x16.4t	NBR	*	
53	065-339-15	Outer Cover	1	LH430W	SS	888.00	
54	121-454-14	Packing	1	291x307.8x16.4	NBR	*	
55	055-725-11	Rotor and Shaft	1			3,700.00	
56	147-132-13	Impeller Key	2	10x8x25L	SUS	59.20	
57	053-309-19	Motor Protector	1	9700K-46-215		17.00	
58	056-692-11	Stator	1		220V	5,846.00	
58	056-	Stator	1		440/575V	6,723.60	
59	122-153-13	O-Ring	1	G-220	NBR	*	
60	064-390-11	Motor Frame	1		FC	1,503.70	
61	122-259-10	O-Ring	1	12x3	NBR	*	
62	144-490-13	Stator Set Bolt	1	M12(B=21)	SUS403	4.70	
63	122-171-17	O-Ring	1	V-150	NBR	*	
64	122-150-10	O-Ring	1	G-195	NBR	*	
65	121-463-16	Felt Packing	2	4x4.4x217L	Felt	22.20	
66	140-055-49	Hex. Bolt	4	M8x25	SWRM	0.40	
67	062-210-10	Retainer	1	55.5x160x22t	FC	118.40	
68	052-120-11	Bearing	1	7311ADBC3		0.00	
69	142-244-14	Bearing Washer	1	AW11	SPCC	7.40	
70	141-076-10	Bearing Nut	1	AN11	SS	23.40	
71	026-272-18	Oil Seal	1	SC-50689	NBR	23.10	
72	060-420-19	Bearing Housing	1		FC	1,613.20	
73	121-247-12	Packing	2	11.8x18x2t	Poly Sheet	*	
74	035-113-18	Oil Plug	2	M12x14	SUS304	3.60	
75	142-165-10	Spring Washer	6	M12	SUS304	0.50	

PARTS PRICE LIST

LH430W-60

(04/01/96)

Control Number : PLPA-ILH4PWA0-01

Supersedes : -----

ITEM	PARTS NO.	DESCRIPTION	Q'TY	SIZE	MATERIAL	PRICE (\$)	NOTE
76	140-100-11	Hex. Bolt	6	M12x45	SUS304	2.80	
77	025-287-13	Mechanical Seal	1	HT-4550	SiC+CCBN	708.90	
78	143-027-12	Cross Pan Screw	6	M5x8	SWRM	0.10	
79	030-130-16	Oil Ring	1	HT-4550 use	SPCC	8.30	
80	122-251-12	O-Ring	1	205x3.8	NBR	*	
81	029-345-12	Oil Casing	1	LH322W/430W	FC	281.20	
82	142-164-19	Spring Washer	4	M10	SUS304	4.70	
83	140-286-12	Hex. Bolt	4	M10x30	SUS304	4.70	
84	071-299-11	Upper Shaft Sleeve	1	40x50x23t	SUS403	103.60	
85	144-438-26	Stud Bolt	4	M16x79(24/28)	SUS304	14.80	
86	122-016-13	O-Ring	4	P-16	NBR	*	
87	122-251-12	O-Ring	1	205x3.8	NBR	*	
88	122-295-18	O-Ring	1	310x3.8	NBR	*	
89	020-896-16	Upper Pump Casing	1	W/Labyrinth ring	FC+SUS	1,361.60	
90	142-166-11	Spring Washer	4	M16	SUS304	1.00	
91	141-008-11	Hex. Nut	4	M16	SUS304	3.00	
92	140-125-12	Hex. Bolt	4	M16x45	SUS304	4.70	
93	142-166-11	Spring Washer	4	M16	SUS304	1.00	
94	122-255-16	O-Ring	1	340x5	NBR	*	
95	122-449-19	Back-up Ring	1	P-50	Teflon	11.80	
96	122-046-12	O-Ring	1	P-50	NBR	*	
97	040-126-10	Impeller Shim	1	41.5x59x0.3t	SUS304	2.10	
98	021-F93-13	Impeller	2	60Hz	HICRFC	1,110.00	
99	020- 987-17	Middle Pump Casing	1	w/mouth ring	FC	1,746.40	
100	122-255-16	O-Ring	1	340x5	NBR	*	
101	071-300-16	Lower Shaft Sleeve	1	40x50x47t	SUS403	103.60	
102	122-449-19	Back-up Ring	1	P-50	Teflon	11.80	
103	122-046-12	O-Ring	1	P-50	NBR	*	
104	040-126-10	Impeller Shim	1	41.5x59x0.3t	SUS304	2.10	
105	142-134-10	Plain Washer	1	M30	SUS304	9.00	
106	141-012-50	Hex. Nut	2	M30 (H=18)	SUS304	20.70	
107	020-898-18	Lower Pump Casing	1	w/mouth ring	FC+HICR	917.60	
108	142-166-11	Spring Washer	4	M16	SUS304	1.00	
109	140-126-13	Hex. Bolt	4	M16x50	SUS304	5.00	
110	141-007-10	Hex. Nut	2	M12	SUS304	1.30	
111	142-165-10	Spring Washer	2	M12	SUS304	0.50	
112	142-129-12	Plain Washer	2	M12	SUS304	0.50	
113	043-102-19	Cathodic Prot. Plate	2	AB-1HS	AL	29.60	
114	140-096-13	Hex. Bolt	2	M12x25	SUS304	2.10	
115	144-128-17	Stud Bolt	4	M16x110(24/24)	SUS304	35.50	
116	023-438-15	Strainer Stand	1	LH433W	SS	1,391.20	
117	142-166-11	Spring Washer	4	M16	SUS304	1.00	
118	141-008-11	Hex. Nut	4	M16	SUS304	3.00	
	173-488-18	Packing O-Ring Set	1	(*)		627.50	

020-897-17

- Pricing in U.S. currency, and subject to change without notice.
- Items with * prices are available only in sets.