



EXPLOADED VIEW

Control Number :

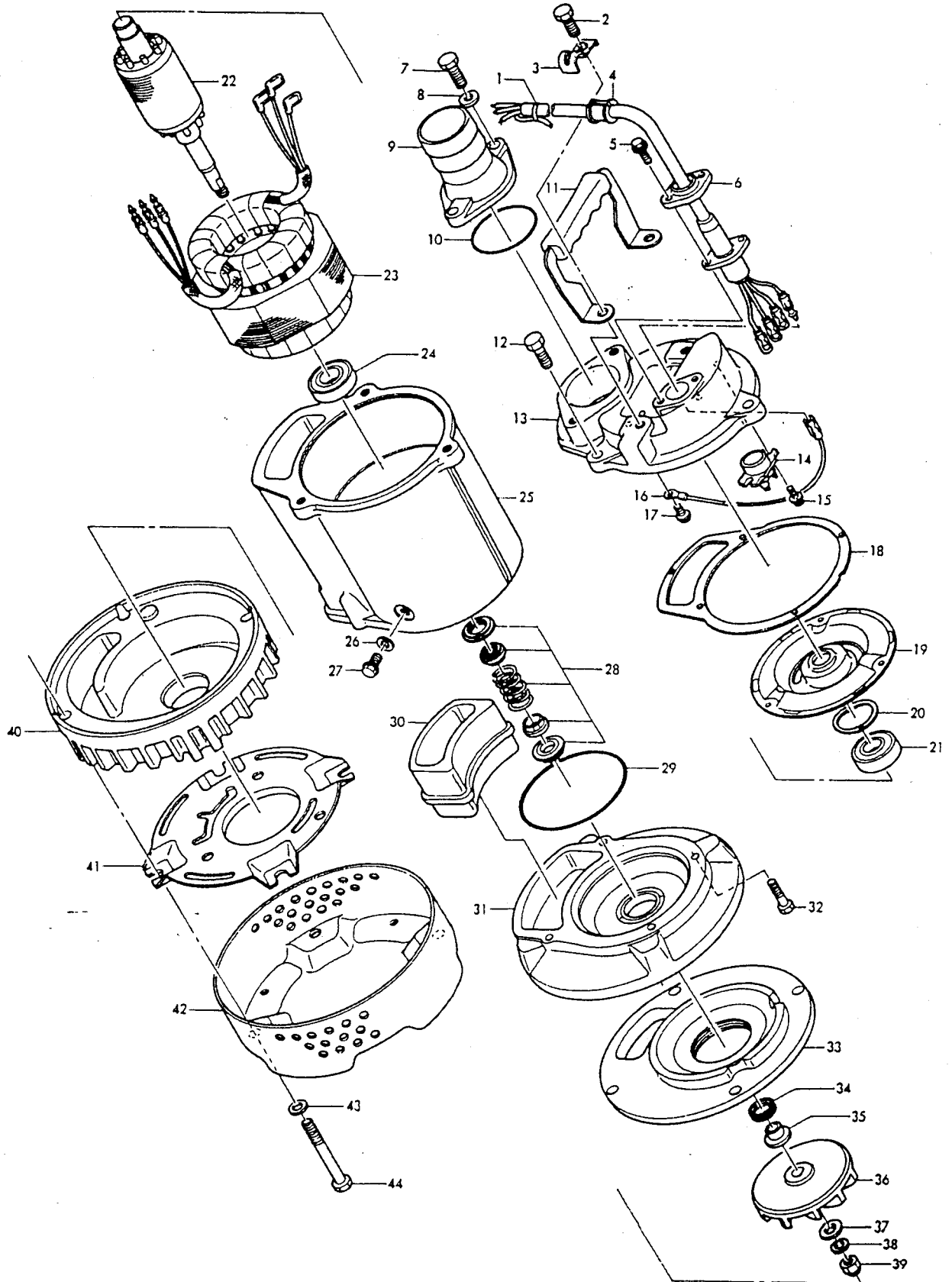
DREV-IKV28A-01

Model : KTV2-8

Supersedes :

Submersible Dewatering Torque Flow Pump

04-01-96



TSURUMI (AMERICA), INC.

PARTS PRICE LIST

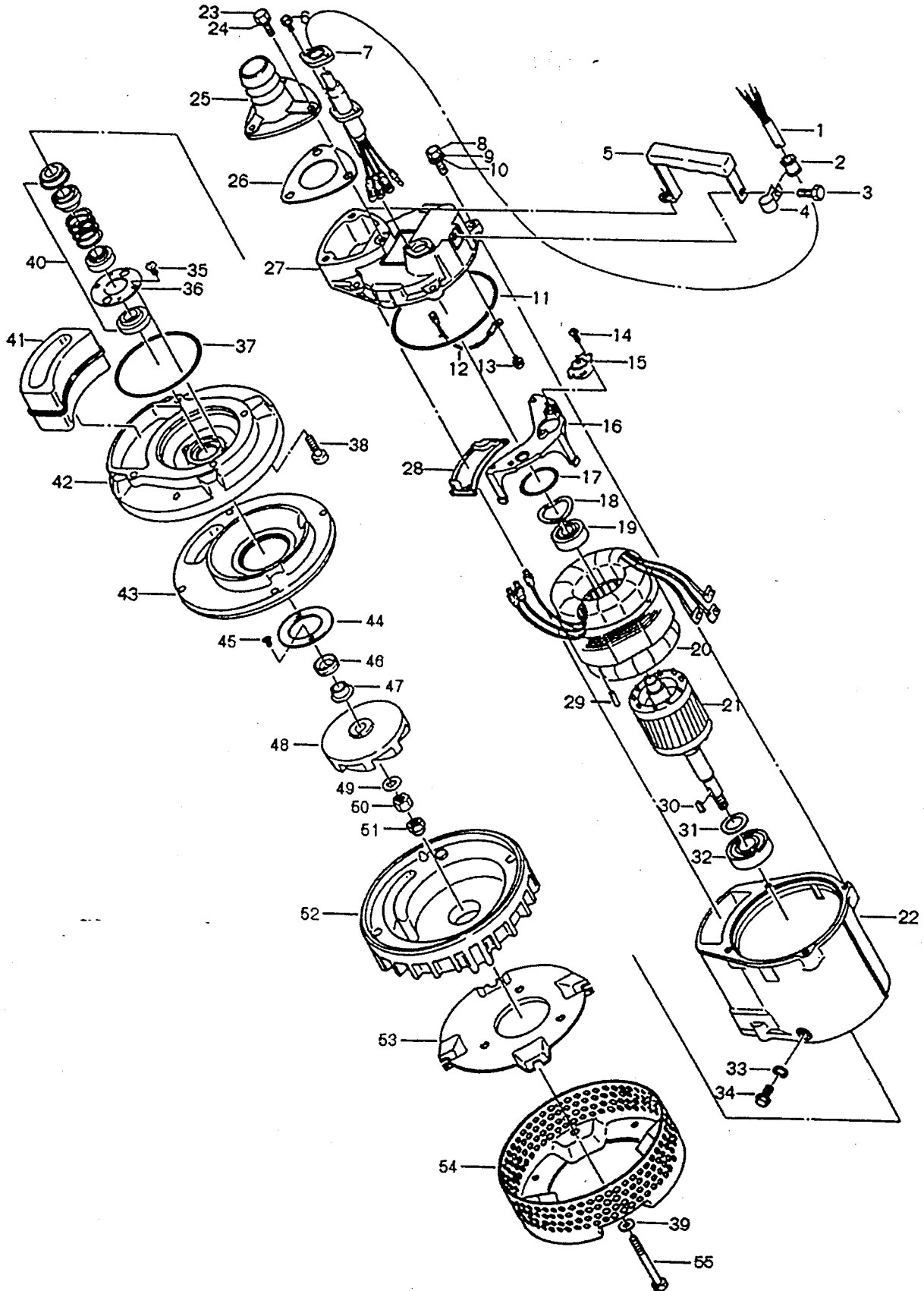
KTV2-8

IKV28A

Control Number :		Supercedes:		PLPA-IKV28A-02		(12/01/99)	
ITEM	PARTS NO.	DESCRIPTION	Q'TY	SIZE	MATERIAL	PRICE (\$)	NOTE
1	001-803-33	Cab-tyre Cable	1	AWG16 x 49'	VCT/LBT	134.20	
2	140-054-19	Hex. Bolt	2	M8x20L	SUS304	0.80	
3	010-112-10	Cable Clamp	1	LB2-400	SPC	1.90	
4	010-126-17	Clip Rubber	1		NBR	2.20	
5	140-427-17	Hex. Bolt	2	M5x15L (WS)	SUS304	0.50	
6	003-100-13	Gland	1		SUS304	4.90	
7	140-055-10	Hex. Bolt	2	M8x25L	SUS304	0.80	
8	142-210-11	Plain Washer	2	8.6x13.4x1t	SUS304	0.60	
9	032-214-11	Hose Coupling	1	NPT-2"	FC	35.50	
10	122-275-12	O-Ring	1	54x3.6	NBR	1.20	*
11	068-136-22	Handle	1		SPC+NBR	10.80	
12	140-055-10	Hex. Bolt	3	M8x25L	SUS304	0.80	
13	051-221-10	Motor Head Cover	1		ADC	69.60	
14	053-199-14	Motor Protector	1	KA311-DAXL78	(T.C)220V	116.00	
14	053-443-16	Motor Protector	1	KA311-DAXL68	(T.C)440V	118.40	
14	053-443-16	Motor Protector	1	KA311-DAXL68	(T.C)575V	118.40	
15	143-126-12	Cross Pan Screw	2	M4x12L	SWRM	0.30	
16	009-127-14	Solderless Terminal	1	R-1,25-4	CU	0.40	
17	143-013-15	Cross Pan Screw	1	M4x6L	SWRM	0.20	
18	121-455-15	Packing	1		CR		*
19	050-408-10	Motor Bracket	1		SPHC	16.30	
20	142-194-18	Wave Washer	1	#6203	SK-5	2.20	
21	052-102-17	Ball Bearing	1	6203ZZC3		7.40	
22	055-678-18	Rotor and Shaft	1			281.20	
23	056-693-12	Motor Stator	1		220V	337.40	
23	056-730-18	Motor Stator	1		440V	390.70	
24	052-103-18	Ball Bearing	1	6204ZZC3		8.90	
25	064-473-19	Motor Frame	1		ADC	204.20	
26	121-248-13	Packing	1	8.2x13.5x2t	Poly.Sheet	0.50	*
27	035-126-14	Oil Plug	1	M8x16L	SUS304	3.00	
28	025-291-10	Mechanical Seal	1	W-14VL	Sic	56.20	
29	122-131-15	O-Ring	1	G-100 (3.1)	NBR	2.10	*
30	121-448-15	Packing	1			24.00	*
31	029-289-17	Oil Casing	1		ADC	69.60	
32	140-253-10	Socket Head Bolt	4	M6x25L	SUS304	1.30	
33	031-141-26	Wear Ring	1	KTV2-8		26.60	
34	122-441-11	V-Ring	1	VR-14	NBR	2.70	
35	071-292-14	Shaft Sleeve	1		SUS304	4.90	
36	021-F96-16	Impeller	1	60HZ		56.20	
37	142-127-10	Plain Washer	1	M8	SPC	0.20	
38	142-163-18	Spring Washer	1	M8	SUS304	0.20	
39	141-030-12	Hex. Cap Nut	1	M8	SUS304	1.80	
40	020-881-18	Pump Casing	1	KTV2-8		51.80	
41	127-196-13	Retainer	1		SPCC	11.80	
42	023-439-16	Strainer	1		SPCC	22.20	
43	142-127-23	Plain Washer	4	M8	SPC	0.20	
44	140-064-12	Hex. Bolt	4	M8x70L	SUS304	2.70	
	173-490-13	Packing O-Ring Set	1	(*)		38.80	

- Pricing in U.S. currency and subject to change without notice.
- Items with * come in Packing O-Ring Set.

50hz Imp. 021-F95-15



PARTS PRICE LIST

KTV2-15

IKV21A

Control Number :		PLPA-IKV21A-03	Supercedes:		PLPA-IKV21A-02	(12/01/99)	
ITEM	PARTS NO.	DESCRIPTION	Q'TY	SIZE	MATERIAL	PRICE (\$)	NOTE
1	001-803-33	Cab-tyre Cable	1	AWG16 x 49'	VCT/LBT	134.20	
2	010-126-17	Clip Rubber	1		NBR	3.00	
3	140-052-19	Hex. Bolt	1	M8x20L	SUS304	0.80	
4	010-130-14	Cable Clip	1		SPC	2.10	
5	068-248-15	Handle	1		SPC/NBR	14.80	
6	140-427-17	Hex. Bolt	2	M5x15L	SUS304	0.50	
7	003-100-13	Gland	1		SUS304	4.90	
8	140-056-11	Hex. Bolt	4	M8x30L	SUS304	0.90	
9	142-163-18	Spring Washer	4	M8	SUS304	0.20	
10	142-127-10	Plain Washer	4	M8	SUS304	0.20	
11	122-445-15	O-Ring	1	152x3.1	NBR	5.35	*
12	009-145-18	Lead Wire	1			3.00	
13	143-013-15	Cross Pan Screw	1	M4x6L	SWRM	0.20	
14	143-138-17	Cross Pan Screw	2	M4x12L	SWRM	0.30	
15	053-272-12	Motor Protector	1	KA311-DAXL78	(T) 440V	116.00	
15	053-194-22	Motor Protector	1	KA313-GBXL103	(T) 220V	129.10	
15	053-239-17	Motor Protector	1	KA311-DAXL66	(T) 575V	14.00	
16	058-167-18	Protection Plate	1	KTV2-15/22	JUS	14.80	
17	122-293-16	O-Ring	1	47x3.1	NBR		*
18	142-195-19	Wave Washer	1	#6204	SK-5	2.20	
19	052-103-18	Ball Bearing	1	#6204ZZC3		8.90	
20	056-662-12	Motor Stator	1		220V	344.20	
20	056-772-11	Motor Stator	1		440V	414.40	
21	055-661-18	Rotor and Shaft	1			325.00	
22	064-467-10	Motor Frame	1		ADC	364.10	
23	140-056-11	Hex. Bolt	3	M8x30L	SUS304	0.90	
24	142-127-23	Plain Washer	3	M8	SPC	0.20	
25	032-351-11	Hose Coupling	1	KTV2 NPT-2"	FC	62.20	
25	032-355-15	Hose Coupling	1	KTV2 NPT-3"	FC	68.10	
26	121-441-18	Packing	1		NBR	5.35	*
27	050-399-17	Motor Bracket	1		ADC	239.80	
28	121-445-12	Packing	1		NBR	6.60	*
29	145-028-19	Pin	1	6x32L	S45C	11.80	
30	147-128-16	Impeller Key	1	5x5x18.5L	SUS	7.40	
31	061-161-12	Bearing Collar	1	25.1x36x1.6t	SPC	1.60	
32	052-108-13	Ball Bearing	1	#6305ZZC3		14.50	
33	121-246-11	Packing	1	10.3x16x2t	Poly.Sheet	0.80	*
34	035-125-13	Oil Plug	1	M10x20L	SUS304	3.00	
35	143-070-10	Cross Pan Screw	2	M5x6L	SWRM	0.10	
36	030-122-15	Retainer	1		SPC	3.80	
37	122-134-18	O-Ring	1	G-115	NBR	2.90	*
38	140-270-13	Hex. Socket Bolt	4	M8x30L	SUS304	1.90	
39	142-127-23	Plain Washer	4	M8	SPC	0.20	
40	025-192-10	Mechanical Seal	1	H-20	SIC	211.60	
41	121-440-17	Packing	1			27.20	*
42	029-347-14	Oil Casing	1		ADC	100.60	
43	031-138-20	Wear Ring	1		SY. Rubber	44.40	
44	058-182-19	Protection Plate	1		SUS304	8.90	
45	143-014-16	Cross Tapping Screw	2	M4 x 8	SWRM	0.10	
46	122-443-13	V-Ring	1	VR-20	NBR	8.90	
47	071-297-19	Shaft Sleeve	1		SUS304	17.80	
48	021-F73-17	Impeller	1	60HZ	FCD	68.10	
49	142-129-25	Plain Washer	1	M12	SPC	0.20	
50	141-007-10	Hex. Nut	1	M12	SUS304	1.30	
51	141-032-14	Hex. Cap Nut	1	M12	SUS304	3.30	
52	020-B19-18	Pump Casing	1			56.20	
53	127-249-12	Retainer	1		SPCC	17.80	
54	023-432-19	Strainer	1		SPCC	37.00	
55	140-067-15	Hex. Bolt	4	M8x85L	SUS304	4.60	
	173-472-19	Packing O-Ring Set	1	(*)		53.30	

* Pricing in U.S. currency and subject to change without notice.

* Items with * come in Packing O-Ring Set.



EXPLODED VIEW

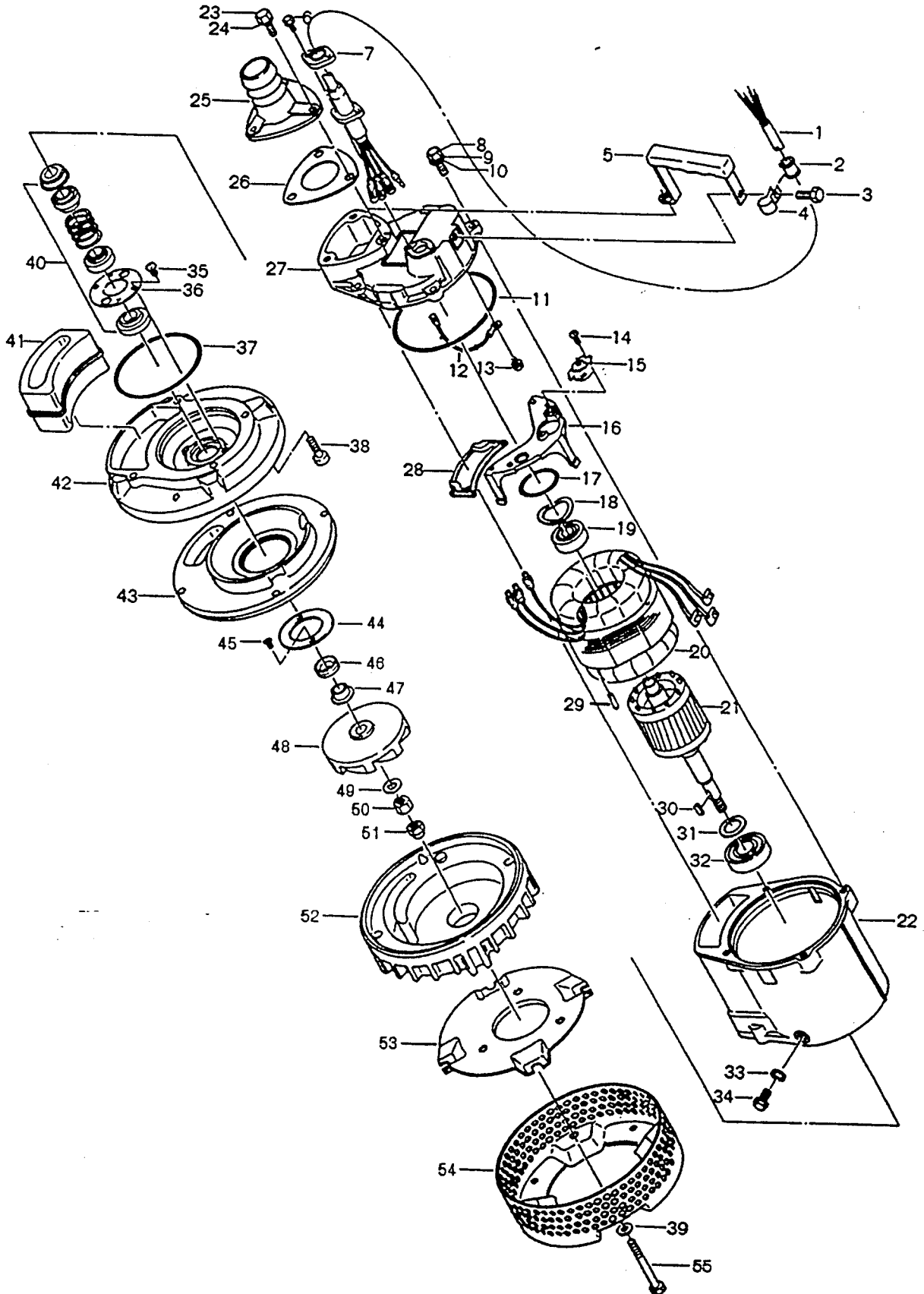
Control Number :
DREV-IKV22A-01

Model : KTV2-22

Supersedes :

Submersible Dewatering Torque Flow Pump

04-01-96



PARTS PRICE LIST

KTV2-22

IKV22A

Control Number : PLPA-IKV22A-03

Supercedes:

PLPA-IKV22A-02

(12/01/99)

ITEM	PARTS NO.	DESCRIPTION	Q'TY	SIZE	MATERIAL	PRICE (\$)	NOTE
1	001-803-33	Cab-tyre Cable	1	AWG16 x 49'	VCT/LBT	134.20	
2	010-126-17	Clip Rubber	1		NBR	2.20	
3	140-054-19	Hex. Bolt	1	M8x20L	SUS304	0.80	
4	010-130-14	Cable Clip	1		SPC	2.10	
5	068-248-15	Handle	1		SPC/NBR	14.80	
6	140-427-17	Hex. Bolt	2	M5x15L	SUS304	0.50	
7	003-100-13	Gland	1		SUS304	4.90	
8	140-056-11	Hex. Bolt	4	M8x30L	SUS304	0.90	
9	142-163-18	Spring Washer	4	M8	SUS304	0.20	
10	142-127-10	Plain Washer	4	M8	SUS304	0.20	
11	122-445-15	O-Ring	1	152x3.1	NBR	5.35	*
12	009-145-18	Lead Wire	1			3.00	
13	143-013-15	Cross Pan Screw	1	M4x6L	SWRM	0.20	
14	143-138-17	Tapping Screw	2	M4x12L	SWRM	0.30	
15	053-407-18	Motor Protector	1	KA313-GDXL103	(T) 220V	162.80	
15	053-411-15	Motor Protector	1	KA313-GQXL104	(T) 440V	162.80	
15	053-272-12	Motor Protector	1	KA311-DAXL78	(T) 575V	58.00	
16	058-167-18	L.Wire Prot. Cover	1		Resin	14.80	
17	122-293-16	O-Ring	1	47x3.1	NBR		*
18	142-195-19	Wave Washer	1	#6204	SK-5	2.20	
19	052-103-18	Ball Bearing	1	#6204ZZC3		8.90	
20	056-663-13	Motor Stator	1		220V	577.20	
20	056-724-13	Motor Stator	1		440V	666.00	
21	055-662-19	Rotor and Shaft	1			340.40	
22	064-467-10	Motor Frame	1		ADC	364.10	
23	140-056-11	Hex. Bolt	3	M8x30L	SUS304	0.90	
24	142-127-23	Plain Washer	3	M8	SPC	0.20	
25	032-351-11	Hose Coupling	1	KTV2 NPT-2"	FC	62.20	
25	032-355-15	Hose Coupling	1	KTV2 NPT-3"	FC	68.10	
26	121-441-18	Packing	1		NBR	5.35	*
27	050-401-13	Motor Bracket	1		ADC	272.30	
28	121-445-12	Packing	1		NBR	6.60	*
29	145-028-19	Pin	1	6x32L	S45C	11.80	
30	147-128-16	Impeller Key	1	5x5x18.5L	SUS	7.40	
31	061-161-12	Bearing Collar	1	25.1x36x1.6t	SPC	1.60	
32	052-108-13	Ball Bearing	1	#6305ZZC3		14.50	
33	121-246-11	Packing	1	10.3x16x2t	Poly. Sheet	0.80	*
34	035-125-13	Oil Plug	1	M10x20L	SUS304	3.00	
35	143-070-10	Cross Pan Screw	2	M5x6L	SWRM	0.10	
36	030-122-15	Retainer	1		SPC	3.80	
37	122-134-18	O-Ring	1	G-115	NBR	2.90	*
38	140-270-13	Hex. Socket Cap Screw	4	M8x30L	SUS304	1.90	
39	142-127-23	Plain Washer	4	M8	SPC	0.20	
40	025-192-10	Mechanical Seal	1	H-20	SIC	211.60	
41	121-440-17	Packing	1			27.20	*
42	029-347-14	Oil Casing	1		ADC	100.60	
43	031-138-20	Wear Ring	1			44.40	
44	058-182-19	Protection Plate	1		SUS304	8.90	
45	143-014-16	Cross Tapping Screw	2	M4 x 8	SWRM	0.10	
46	122-443-13	V-Ring	1	VR-20	NBR	8.90	
47	071-297-19	Shaft Sleeve	1		SUS304	17.80	
48	021-F75-19	Impeller	1	60HZ	FCD	82.90	
49	142-129-25	Plain Washer	1	M12	SPC	0.20	
50	141-007-10	Hex. Nut	1	M12	SUS304	1.30	
51	141-032-14	Hex. Cap Nut	1	M12	SUS304	3.30	
52	020-B19-18	Pump Casing	1	KTV2-15/22		56.20	
53	127-249-12	Retainer	1		SPCC	17.80	
54	023-432-19	Strainer	1		SPCC	37.00	
55	140-067-15	Hex. Bolt	4	M8x85L	SUS304	4.60	
	173-472-19	Packing O-Ring Set	1	(*)		53.30	

* Pricing in U.S. currency and subject to change without notice.
 * Items with * come in Packing O-Ring Set.

003-100-13
 009-Boat-LB



EXPLOADED VIEW

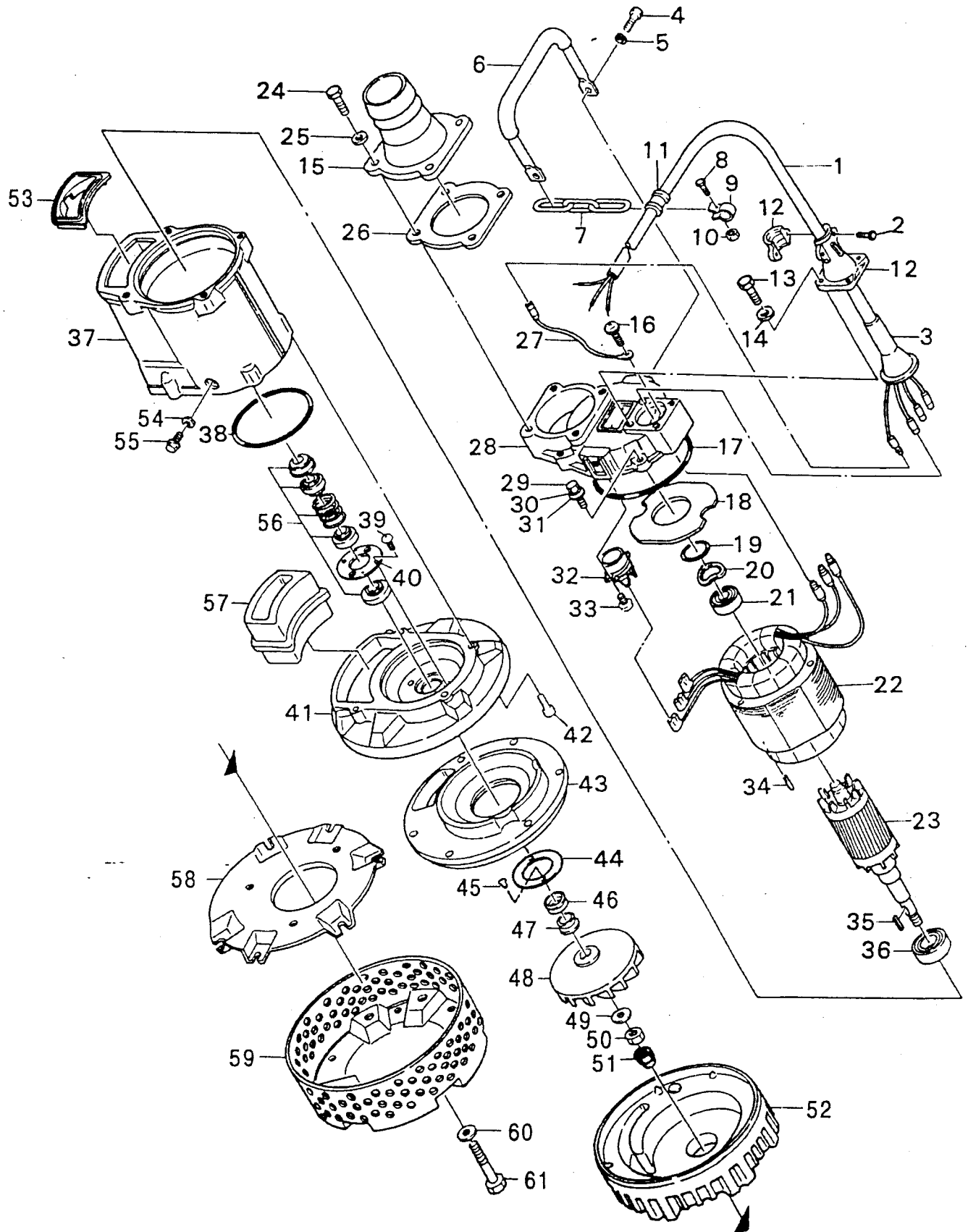
Control Number :
DREV-IKV23A-01

Model : KTV2-37/37H

Supersedes :

Submersible Dewatering Torque Flow Pump

04-01-96



TSURUMI (AMERICA), INC.

PARTS PRICE LIST

KTV2-37-37H

IKV23(H)A

Control Number :		Supercedes :		PLPA-IKV23A-02		(12/01/99)	
ITEM	PARTS NO.	DESCRIPTION	Q'TY	SIZE	MATERIAL	PRICE (\$)	NOTE
1	001-308-33	Cab-tyre Cable	1	AWG14 x 49'	2PNCT.F	441.00	
2	140-033-12	Hex. Bolt	2	M6x16L	SUS304	0.30	
3	008-133-10	Rubber Boot	1	No.1-9	CR	8.10	
4	140-074-15	Hex. Bolt	2	M10x20L	SUS304	1.50	
5	142-164-19	Spring Washer	2	M10	SUS304	0.30	
6	068-249-16	Handle	1		SGP+NBR	81.40	
7	095-131-18	Chain	1	4	SS	1.20	
8	140-032-11	Hex. Bolt	1	M6x15L	SUS304	0.30	
9	010-120-18	Cable Clip	1	No.2-1	SPC	5.00	
10	141-004-17	Hex. Nut	1	M6	SUS304	0.20	
11	010-124-15	Clip Rubber	1	No.3	NBR	1.20	
12	003-122-24	Stuffing Box	1	No.1-1	ADC	21.50	
13	140-055-10	Hex. Bolt	4	M8x25L	SUS304	0.80	
14	142-210-11	Plain Washer	4	8.6x13.4x1t	SUS304	0.60	
15	032-159-17	Hose Coupling	1	NPT-2"	FC	72.50	
15	032-161-12	Hose Coupling	1	NPT-3"	FC	83.50	
15	032-162-13	Hose Coupling	1	NPT-4"	FC	95.90	
16	143-013-15	Cross Pan Screw	1	M4x6L	SWRM	0.20	
17	122-446-16	O-Ring	1	160x3.5	NBR		*
18	058-117-13	L.Wire Prot. Plate	1	70x140x1.6t	Resin	44.80	
19	122-367-12	O-Ring	1	52x3.1		1.10	*
20	142-196-10	Wave Washer	1	#6204		2.20	
21	052-107-12	Ball Bearing	1	#6304ZZC3		12.30	
22	056-668-18	Motor Stator	1		220V	888.00	
23	055-667-14	Rotor and Shaft	1			651.20	
24	140-076-17	Hex. Bolt	4	M10x30L	SUS304	1.60	
25	142-128-24	Plain Washer	4	M10	SPC	0.20	
26	121-141-15	Packing	1		NR	3.80	*
27	009-177-19	Lead Wire	1			3.00	
28	050-403-15	Motor Bracket	1		ADC	340.40	
29	140-078-19	Hex. Bolt	4	M10x35L	SUS304	1.80	
30	142-164-19	Spring Washer	4	M10	SUS304	0.30	
31	142-128-11	Plain Washer	4	M10	SUS304	0.30	
32	053-241-12	Motor Protector	1	KA313GGXL110	(H)220V	121.40	
32	053-438-18	Motor Protector	1	KA313GCXL103	(H)440V	133.20	
32	053-421-18	Motor Protector	1	KA313-GQXL102	(T.C)575V	162.80	
33	143-136-15	Cross Pan Screw	2	M4x10L	SWRM	0.10	
34	145-029-10	Taper Pin	1	8x30L	S45C	11.80	
35	147-073-15	Impeller Key	1	5x5x22L	SUS	7.40	
36	052-109-14	Ball Bearing	1	#6306ZZC3		17.90	
37	064-471-17	Motor Frame	1		ADC	488.40	
38	122-139-13	O-Ring	1	G-140	NBR	4.00	*
39	143-070-10	Cross Pan Screw	2	M5x6L	SWRM	0.10	
40	030-123-16	Retainer	1		SPC	3.80	
41	029-348-15	Oil Casing	1		ADC	133.20	
42	140-288-14	Hex. Socket Bolt	4	M10x35L	SUS304	4.70	
43	031-139-21	Wear Ring	1		Rubber	56.20	
44	058-183-10	Protection Plate	1		SUS304	11.80	
45	143-014-16	Cross Tapping Screw	2	M4x8	SWRM	0.10	
46	122-444-14	V-Ring	1	VR-25	NBR	11.80	
47	071-298-10	Shaft Sleeve	1	20x25x9L	SUS304	25.20	
48	021-G22-12	Impeller	1	KTV2-37H(60HZ)	FCD	103.60	
48	021-F77-11	Impeller	1	KTV2-37(60HZ)	FCD	97.70	
49	142-146-28	Plain Washer	1	M16	SPC	0.20	
50	141-008-11	Hex. Nut	1	M16	SUS304	3.00	
51	141-033-15	Hex. Cap Nut	1	M16	SUS304	5.70	
52	020-901-28	Pump Casing	1	KTV2-37H	Rubber	105.10	
52	020-872-29	Pump Casing	1	KTV2-37	Rubber	79.90	
53	121-449-16	Packing	1	KTV2-37	NBR		*
54	121-246-11	Packing	1		Poly. Sheet	0.80	*
55	035-125-13	Oil Plug	1	M10x20L	SUS304	3.00	
56	025-193-11	Mechanical Seal	1	H-25	SIC	236.80	
57	121-442-19	Packing	1				*
58	127-194-11	Retainer	1		SPCC	35.50	
59	023-434-11	Strainer Stand	1	KTV2-37	SPCC	50.30	
60	142-128-24	Plain Washer	6	M10, KTV2-37H	SPC	0.20	
60	142-128-24	Plain Washer	4	M10, KTV-37	SPC	0.20	
61	140-091-18	Hex. Bolt	6	M10 x 100L	SUS304	11.80	
	173-473-10	Packing O-Ring Set	1	(*)		75.50	

- Pricing in U.S. currency and subject to change without notice.
- Items with * come in Packing O-Ring Set.

Pump Casing (new No less) — 020-901-31



EXPLODED

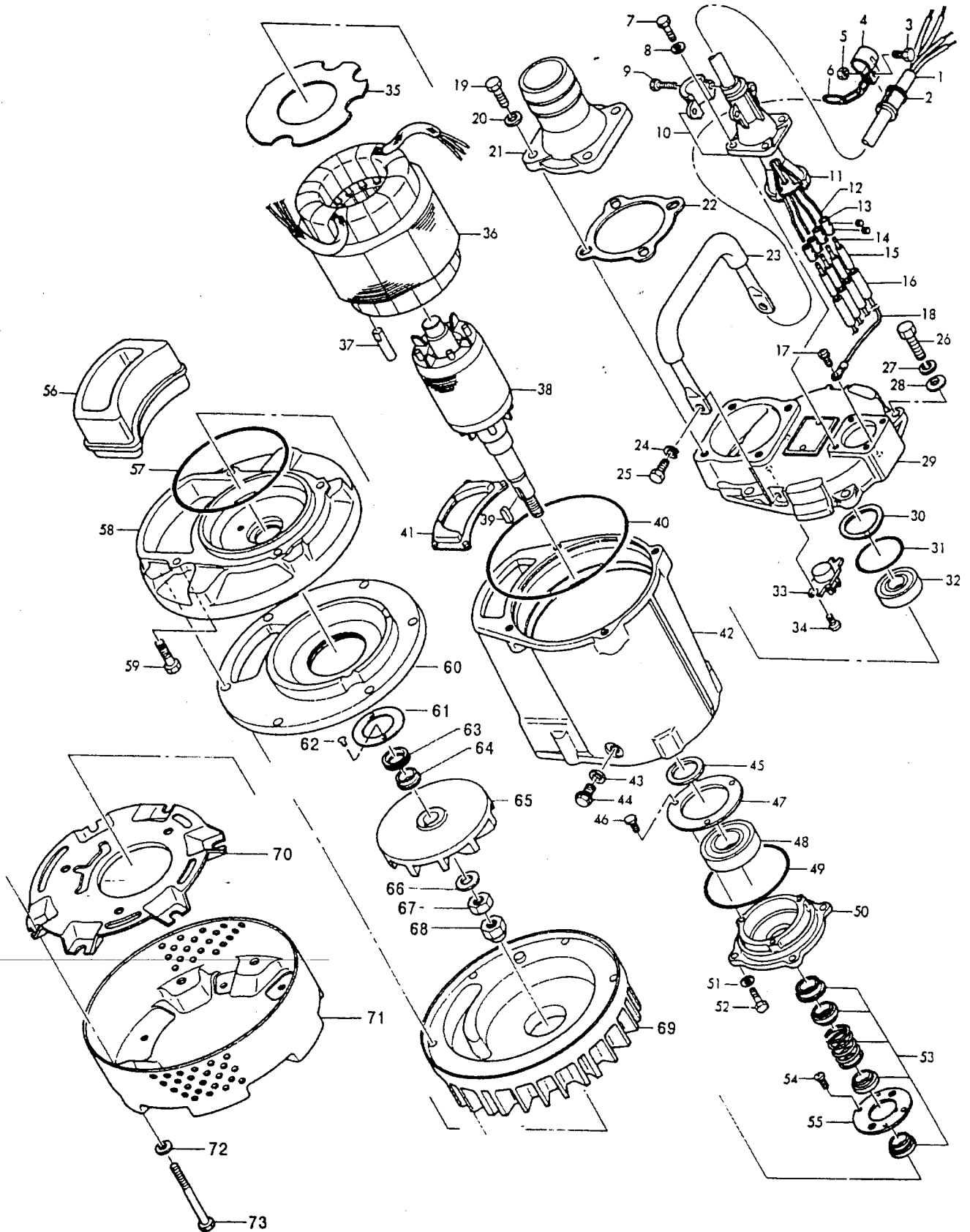
Control Number :
DREV-IKV25H-01

Model : KTV2-55

Supersedes :

Submersible Dewatering Torque Flow Pump

04-01-96



TSURUMI (AMERICA), INC.

PARTS PRICE LIST

KTV2-55

IKV25H

Control Number :		PLPA-IKV25H-03	Supercedes:		PLPA-IKV25H-02	(12/01/99)	
ITEM	PARTS NO.	DESCRIPTION	Q'TY	SIZE	MATERIAL	PRICE (\$)	NOTE
1	001-309-34	Cab-tyre Cable	1	AWG12 x 49'	2PNCT.F	569.80	
2	010-124-15	Clip Rubber	1	No.3	NBR	1.20	
3	140-032-11	Hex. Bolt	1	M6x15L	SUS304	0.30	
4	010-120-18	Cable Clip	1	No.2-1	SPC	5.00	
5	141-004-33	Hex. Nut	1	M6	SUS304	0.20	
6	095-131-18	Chain	1	4	SS	1.20	
7	140-055-10	Hex. Bolt	4	M8x25L	SUS304	0.80	
8	142-210-11	Plain Washer	4	8.6x13.4x1t	SUS304	0.60	
9	140-033-12	Hex. Bolt	2	M6x16L	SUS304	0.30	
10	003-122-24	Stuffing Box	1	No.1-1	ADC	21.50	
11	008-122-16	Rubber Boot	1	No.1-7	CR	8.10	
12	009-123-10	Terminal	4	P-5.5	CU	0.40	
13	009-101-12	Terminal	4	12x25L	BSBM	4.60	
14	009-123-10	Terminal	3	P-5.5	CU	0.40	
15	002-115-18	Heat Shrink Tube	1	NST-150	\$/3.2ft	13.30	
16	002-116-19	Heat Shrink Tube	1	NST-120	\$/3.2ft	14.80	
17	143-013-15	Cross Pan Screw	1	M4x6L	SWRM	0.20	
18	009-182-17	Earth Terminal	1	2X120		4.40	
19	140-076-17	Hex. Bolt	4	M10x30L	SUS304	1.60	
20	142-128-24	Plain Washer	4	M10	SPC	0.20	
21	032-161-12	Hose Coupling	1	NPT-3"	FC	83.50	
21	032-162-13	Hose Coupling	1	NPT-4"	FC	95.90	
22	121-141-15	Packing	1		NR	3.80	*
23	068-249-16	Handle	1		SGP+NBR	81.40	
24	142-164-19	Spring Washer	2	M10	SUS304	0.30	
25	140-074-15	Hex. Bolt	2	M10x20L	SUS304	1.50	
26	140-078-19	Hex. Bolt	4	M10x35L	SUS304	1.80	
27	142-164-19	Spring Washer	4	M10	SUS304	0.30	
28	142-128-11	Plain Washer	4	M10	SUS304	0.30	
29	050-406-18	Motor Bracket	1		ADC	560.90	
30	142-197-11	Wave Washer	1	#6305	SK-5	2.40	
31	122-244-12	O-Ring	1	61.4x3.1	NBR		*
32	052-108-13	Ball Bearing	1	#6305ZZC3		14.50	
33	053-418-12	Motor Protector	1	KA314-HKZL00	(H)220V	287.10	
33	053-440-13	Motor Protection	1	KA314-HRXL00	(H)440V	281.20	
33	053-	Motor Protector	1	KA314-HRTL206	(H)575V		
34	143-136-15	Cross Pan Screw	2	M4x10L	SWRM	0.10	
35	058-170-14	L.Wire Prot. Plate	1	80x170x1.6t		47.40	
36	056-694-13	Motor Stator	1		220V	976.80	
36	056-728-17	Motor Stator	1		440V	1124.80	
37	145-030-14	Taper Pin	1	8x40L	S45C	14.80	
38	055-679-19	Rotor and Shaft	1			911.70	
39	147-073-15	Impeller Key	1	5x5x22L	SUS	7.40	
40	122-309-16	O-Ring	1	190x3.5	NBR		*
41	121-456-16	Packing	1		NBR		*
42	064-472-18	Motor Frame	1		ADC	562.40	
43	121-247-12	Packing	1	11.8x18x2t		0.60	*
44	140-361-25	Oil Plug	1	M12x20L	SUS304	3.60	
45	061-170-14	Bearing Collar	1	35.1x46x2t	SPCC	11.80	
46	140-029-28	Hex. Bolt	3	M6x10L	SWRM	0.10	
47	062-101-17	Retainer	1	PC95x70x2.3t	SS	16.60	
48	052-110-18	Ball Bearing	1	#6307ZZC3		24.30	
49	122-133-17	O-Ring	1	G-110	NBR	2.90	*
50	060-391-10	Bearing Housing	1		ADC	103.60	
51	142-127-23	Plain Washer	4	M8	SPC	0.20	
52	140-054-48	Hex. Bolt	4	M8x20L	SWRM	0.30	
53	025-193-11	Mechanical Seal	1	H-25	SIC	236.80	
54	143-070-10	Cross Pan Screw	2	M5x6L	SWRM	0.10	
55	030-123-16	Retainer	1		SGP	3.80	
56	121-451-11	Packing	1		NBR		*
57	122-285-15	O-Ring	1	155x3.1	NBR		*
58	029-349-16	Oil Casing	1	KTV2-55	ADC	162.80	
59	140-288-14	Hex. Socket Cap Screw	4	M10x35L	SUS304	4.70	
60	031-142-27	Wear Ring	1	KTV2-55		63.60	
61	058-183-10	Protection Plate	1		SUS304	11.80	
62	143-014-16	Cross Tapping Screw	1	M4x8	SWRM	0.10	
63	122-444-14	V-Ring	1	VR-25	NBR	11.80	
64	071-298-10	Shaft Sleeve	1	20x25x9L	SUS304	25.20	
65	021-F76-10	Impeller	1	60HZ	FCD	97.70	
66	142-130-29	Plain Washer	1	M16	SPC	0.30	
67	141-008-11	Hex. Nut	1	M16	SUS304	3.00	
68	141-033-15	Hex. Cap Nut	1	M16	SUS304	5.70	

PARTS PRICE LIST

KTV2-55

IKV25H

Control Number : PLPA-IKV25H-03

Supercedes:

PLPA-IKV25H-02

(12/01/99)

ITEM	PARTS NO.	DESCRIPTION	Q'TY	SIZE	MATERIAL	PRICE (\$)	NOTE
69	020-891-37	Pump Casing	1		Rubber	112.50	
70	127-197-14	Retainer	1		SPCC	53.30	
71	023-444-14	Strainer	1		SPCC	57.70	
72	141-128-24	Plain Washer	6	M10	SPC	0.20	
73	140-091-18	Hex. Bolt	6	M10x100L	SUS304	11.80	
	173-492-15	Packing O-Ring Set	1	(*)		61.00	

- Pricing in U.S. currency and subject to change without notice.
- Items with * come in Packing O-Ring Set.