

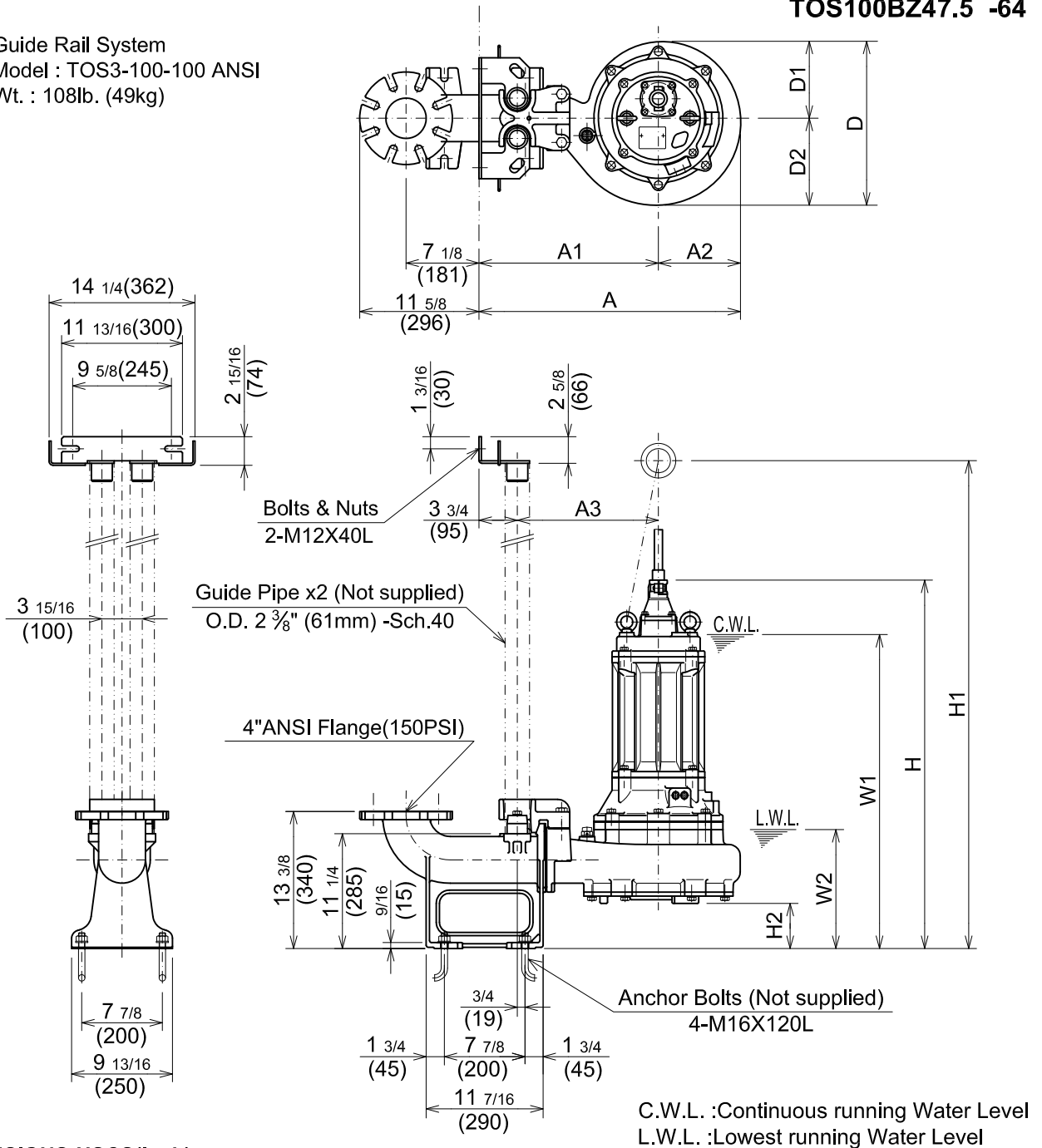


BZ-SERIES
SEWAGE & WASTEWATER PUMPS

DIMENSIONS

TOS100BZ45.5 -64
TOS100BZ47.5 -64

Guide Rail System
Model : TOS3-100-100 ANSI
Wt. : 108lb. (49kg)



DIMENSIONS:USCS(Inch)

Model	HP	NOM. SIZE	Pump & Motor										C.W.L.	L.W.L.	Wt. (lbs.)
			A	A1	A2	A3	D	D1	D2	H	H1	H2			
TOS100BZ45.5 -64	7.5	4"	25 9/16	17 1/2	8 1/16	13 3/4	16	7 1/2	8 1/2	36	47 1/2	4 7/16	30 3/4	11 5/8	370
TOS100BZ47.5 -64	10	4"	25 9/16	17 1/2	8 1/16	13 3/4	16	7 1/2	8 1/2	36 13/16	48 11/16	4 7/16	31 3/4	11 5/8	412

DIMENSIONS:METRIC(mm)

Model	kW	NOM. SIZE	Pump & Motor										C.W.L.	L.W.L.	Wt. (kg)
			A	A1	A2	A3	D	D1	D2	H	H1	H2			
TOS100BZ45.5 -64	5.5	100	649	445	204	350	406	190	216	914	1207	112	780	295	168
TOS100UZ47.5 -64	7.5	100	649	445	204	350	406	190	216	935	1236	112	805	295	187

*Excluding Cable & TOS