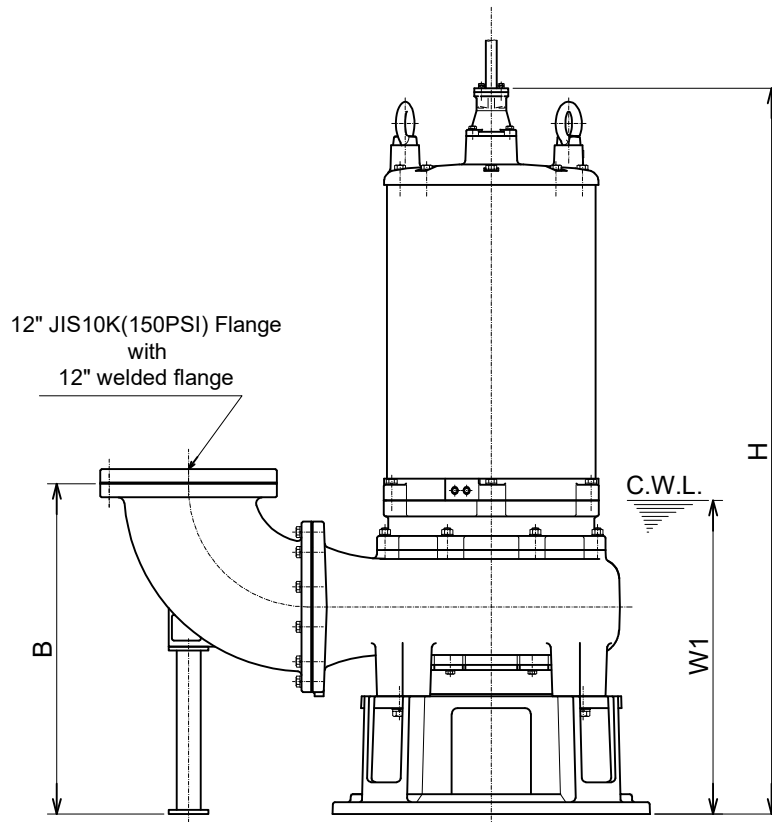


300BZ645 -61  
300BZ655 -61  
300BZ475 -61



C.W.L. :Continuous running Water Level

**DIMENSIONS:USCS (Inch)**

Model	HP	NOM. SIZE	Pump & Motor									C.W.L. W1	*Wt. (lbs.)
			A	A1	A2	A3	B	D	D1	D2	H		
300BZ645-61	60	12"	54 9/16	30 1/16	15 3/4	17 11/16	32 3/4	31 1/2	15 3/4	15 3/4	72 5/8	31 1/8	2670
300BZ655-61	75	12"	54 9/16	30 1/16	15 3/4	17 11/16	32 3/4	31 1/2	15 3/4	15 3/4	72 5/8	31 1/8	2670
300BZ475-61	100	12"	54 9/16	30 1/16	15 3/4	17 11/16	32 3/4	31 1/2	15 3/4	15 3/4	72	31 1/8	2730

**DIMENSIONS:METRIC (mm)**

\*Excluding Cable

Model	kW	NOM. SIZE	Pump & Motor									C.W.L. W1	*Wt. (kg)
			A	A1	A2	A3	B	D	D1	D2	H		
300BZ645-61	45	300	1386	763	400	450	832	800	400	400	1845	790	1210
300BZ655-61	55	300	1386	763	400	450	832	800	400	400	1845	790	1210
300BZ475-61	75	300	1386	763	400	450	832	800	400	400	1829	790	1240