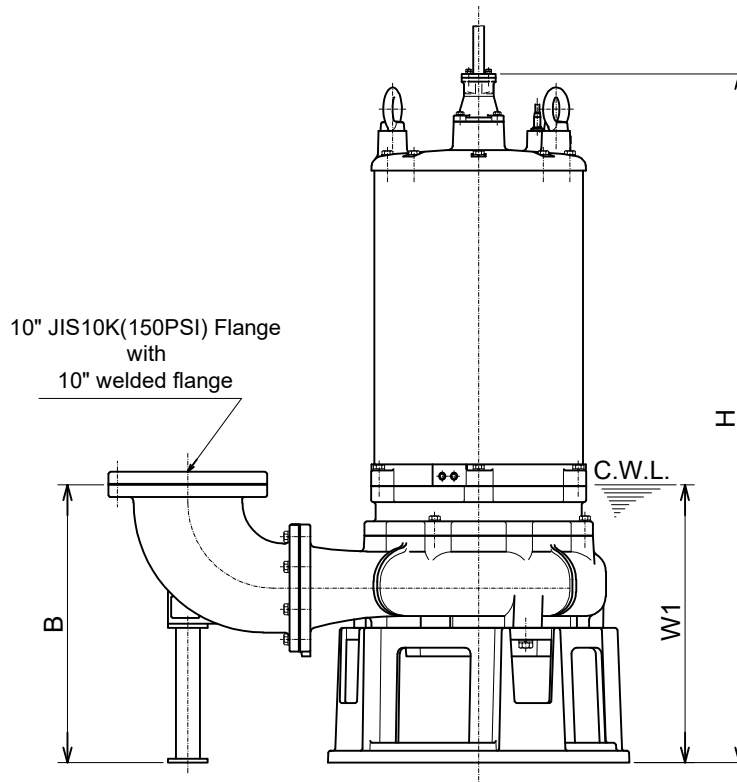
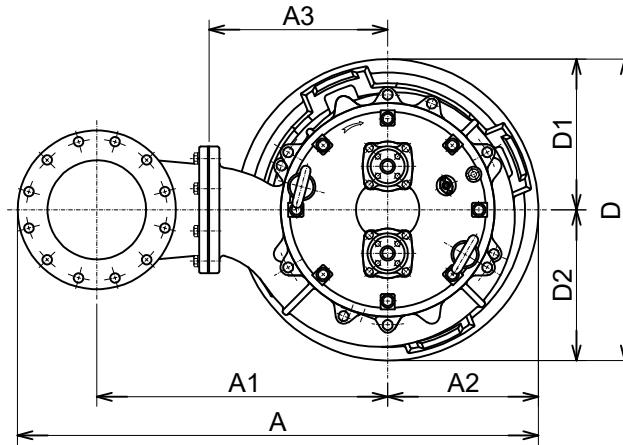


**250BZ455H -61**  
**250BZ475H -61**



C.W.L. :Continuous running Water Level

**DIMENSIONS:USCS (Inch)**

Model	HP	NOM. SIZE	Pump & Motor									C.W.L. W1	*Wt. (lbs.)
			A	A1	A2	A3	B	D	D1	D2	H		
250BZ455H-61	75	10"	51 11/16	28 7/8	14 15/16	17 11/16	27 9/16	29 15/16	14 15/16	14 15/16	68 3/8	27 1/2	2950
250BZ475H-61	100	10"	51 11/16	28 7/8	14 15/16	17 11/16	27 9/16	29 15/16	14 15/16	14 15/16	68 3/8	27 1/2	2950

**DIMENSIONS:METRIC (mm)**

\*Excluding Cable

Model	kW	NOM. SIZE	Pump & Motor									C.W.L. W1	*Wt. (kg)
			A	A1	A2	A3	B	D	D1	D2	H		
250BZ455H-61	55	250	1313	733	380	450	700	760	380	380	1736	700	1340
250BZ475H-61	75	250	1313	733	380	450	700	760	380	380	1736	700	1340