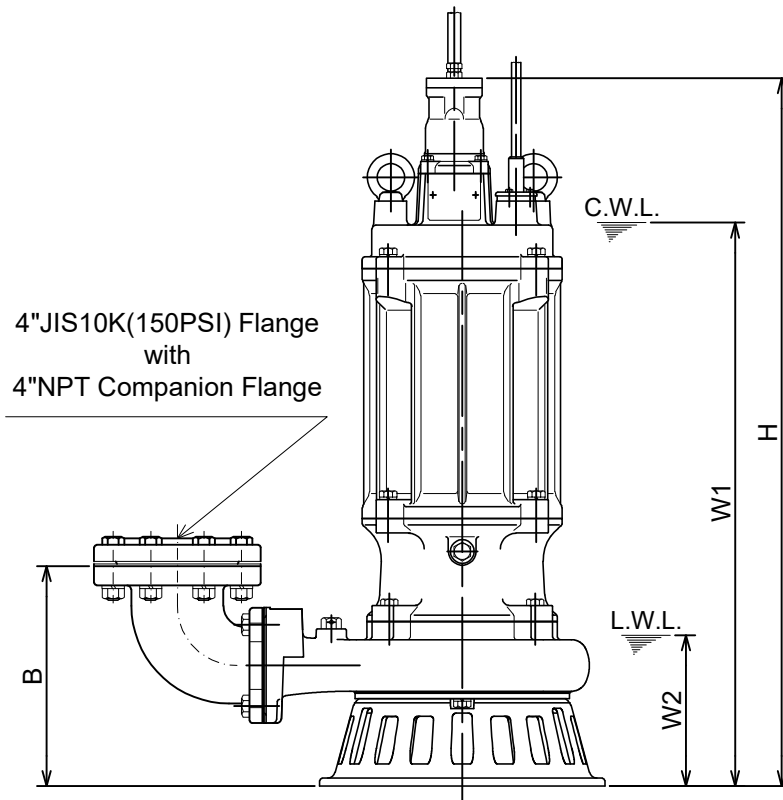
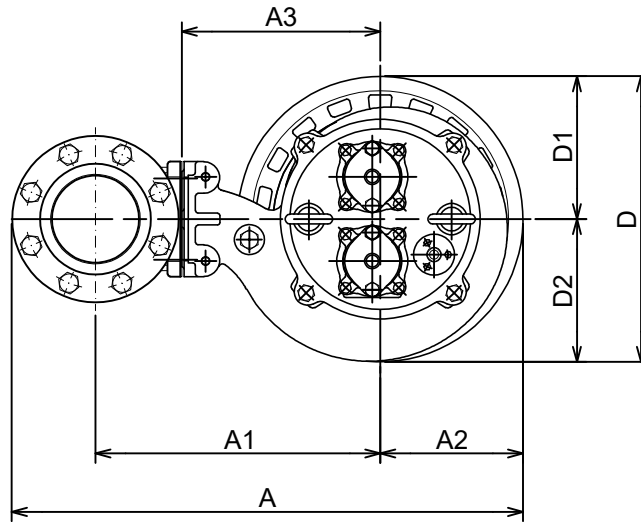


**100SFQ211 -63**



C.W.L. :Continuous running Water Level  
L.W.L. :Lowest running Water Level

**DIMENSIONS:USCS (Inch)**

Model	HP	NOM. SIZE	Pump & Motor									C.W.L.	L.W.L.	*Wt. (lbs.)
			A	A1	A2	A3	B	D	D1	D2	H			
100SFQ211-63	15	4"	25 3/8	14 1/8	7 1/16	9 13/16	10 7/8	14 3/16	7 1/16	7 1/16	35 1/8	28	7 1/2	331

**DIMENSIONS:METRIC (mm)**

Model	kW	NOM. SIZE	Pump & Motor									C.W.L.	L.W.L.	*Wt. (kg)
			A	A1	A2	A3	B	D	D1	D2	H			
100SFQ211-63	11	100	644	359	180	250	277	360	180	180	892	710	190	150

\*Excluding Cable