

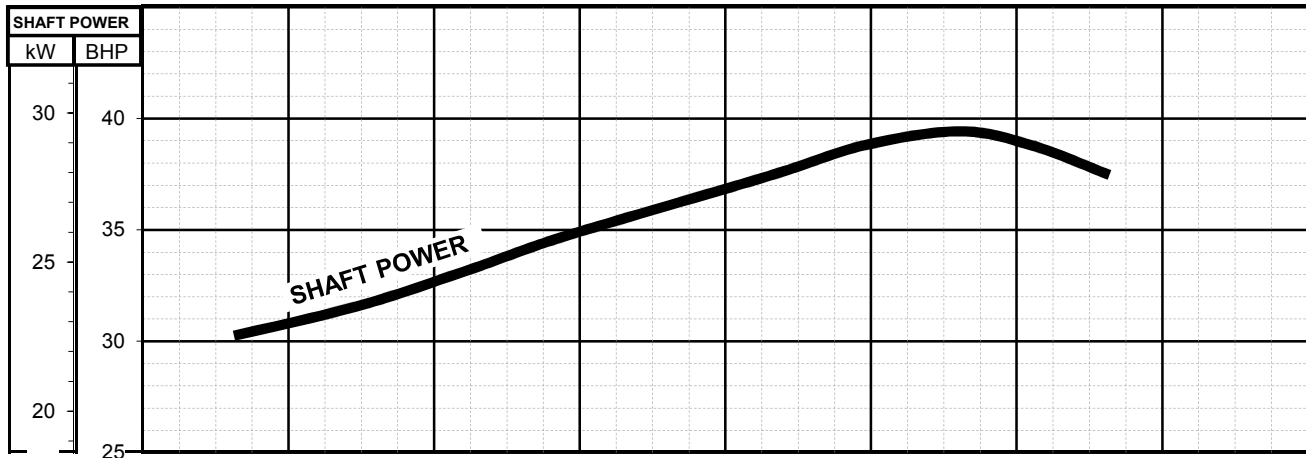
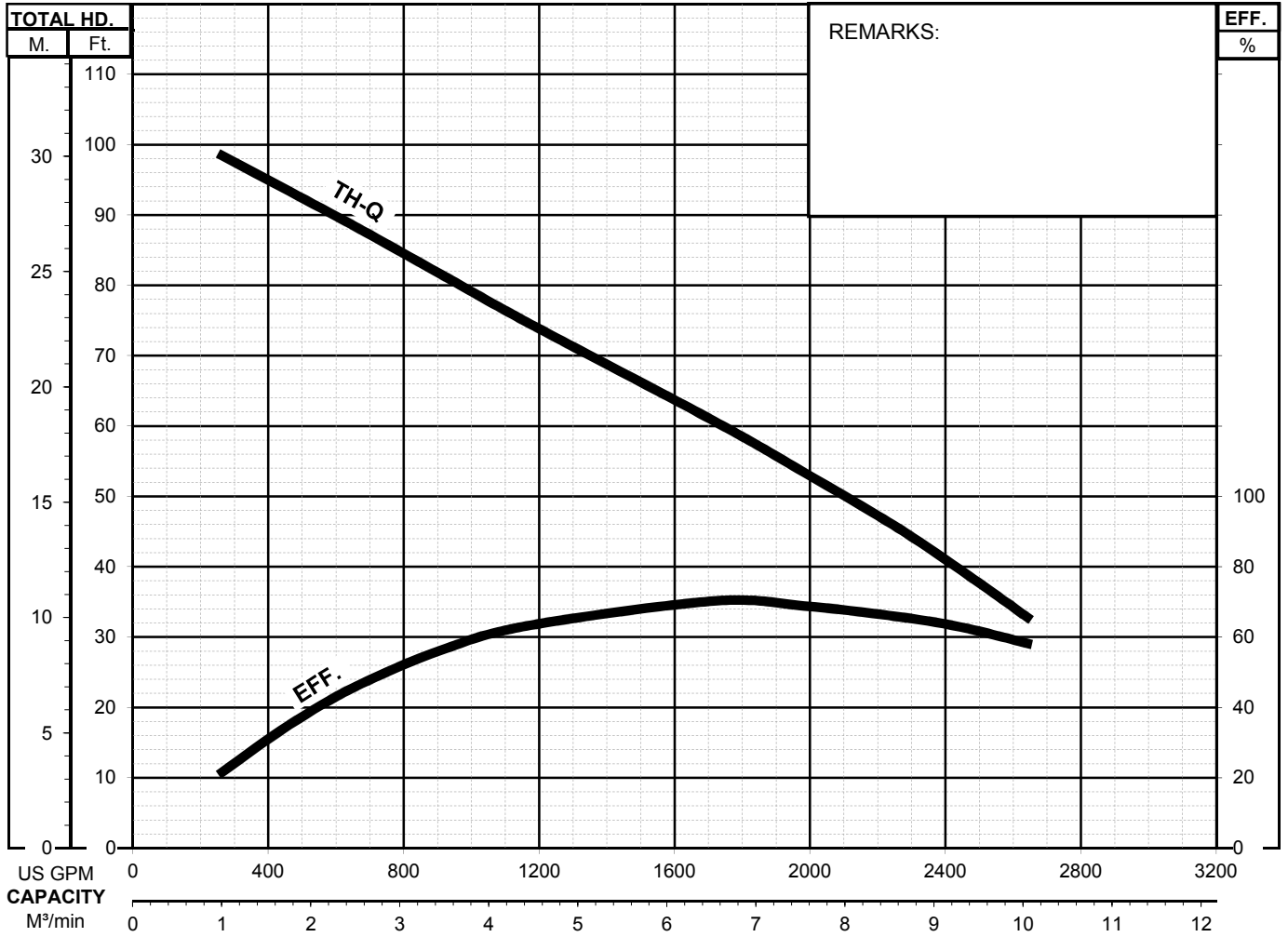


BZ - SERIES

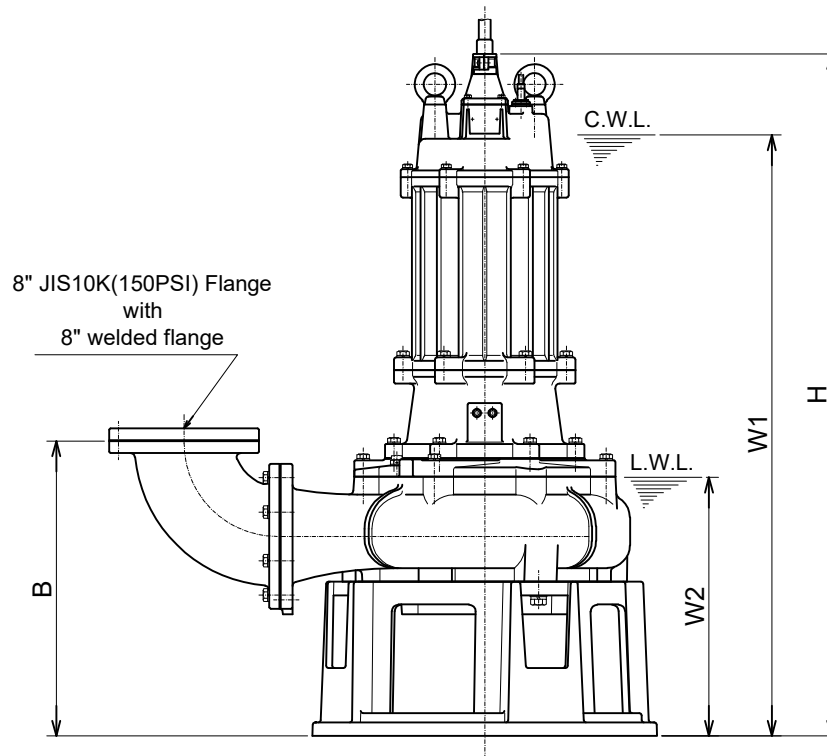
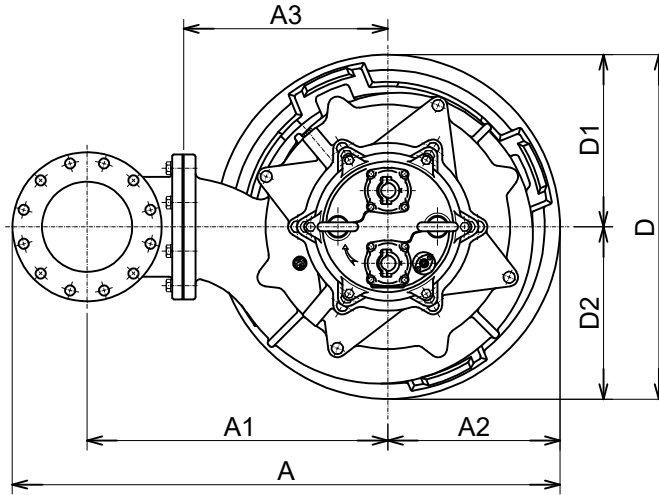
SEWAGE & WASTEWATER PUMPS

PERFORMANCE CURVE

MODEL		BORE	HP	kW	RPM	SOLIDS DIA.	LIQUID	SG.	VISCOSITY	TEMP.
(TO)200BZ430 -61		8"/200mm	40	30	SS 1800	3"/76.2mm	Water	1.0	1.123cSt.	60°F
PUMP TYPE		PHASE	VOLTAGE		AMPERAGE		HZ	STARTING METHOD		INS. CLASS
Sewage & Wastewater Pump		3	460 / 575		- / -		60	Star-Delta		F
CURVE No.	DATE	PHASE	VOLTAGE	AMPERAGE	HZ	STARTING METHOD		INS. CLASS		
-	-	-	-	-	-	-		-		



200BZ430 -61



8" JIS10K(150PSI) Flange
with
8" welded flange

C.W.L. :Continuous running Water Level
L.W.L. :Lowest running Water Level

DIMENSIONS:USCS (Inch)

Model	HP	NOM. SIZE	Pump & Motor								C.W.L.	L.W.L.	*Wt. (lbs.)	
			A	A1	A2	A3	B	D	D1	D2				H
200BZ430-61	40	8"	47 9/16	26 1/8	14 15/16	17 11/16	25 9/16	29 15/16	14 15/16	14 15/16	59 3/16	52 1/8	22 1/2	1720

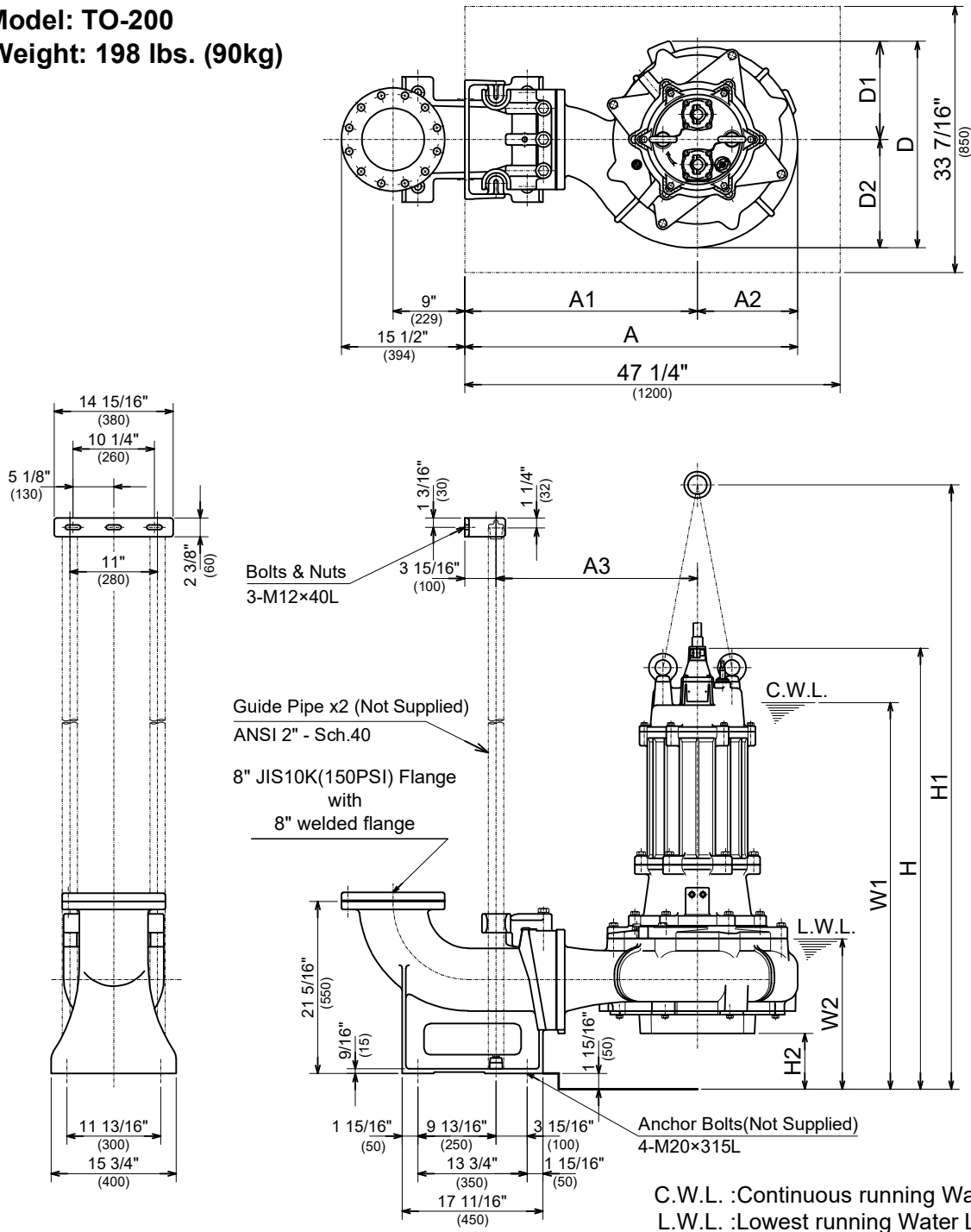
DIMENSIONS:METRIC (mm)

*Excluding Cable

Model	kW	NOM. SIZE	Pump & Motor								C.W.L.	L.W.L.	*Wt. (kg)	
			A	A1	A2	A3	B	D	D1	D2				H
200BZ430-61	30	200	1208	663	380	450	650	760	380	380	1504	1325	570	780

TO200BZ430 -61

Guide rail
Model: TO-200
Weight: 198 lbs. (90kg)



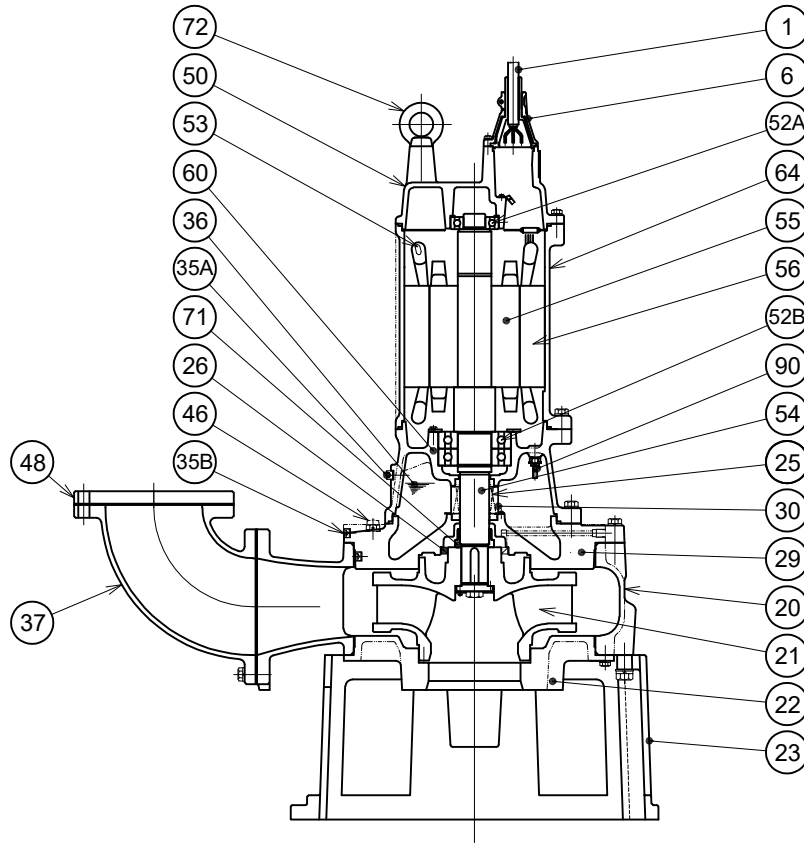
DIMENSIONS:USCS (Inch)

Model	HP	NOM. SIZE	Pump & Motor										C.W.L. W1	L.W.L. W2	*Wt. (lbs.)
			A	A1	A2	A3	D	D1	D2	H	H1	H2			
TO200BZ430 -61	40	8"	41 15/16	29 5/16	12 5/8	25 3/8	26	12 3/8	13 5/8	55 1/2	76	7	48 5/8	18 7/8	1610

DIMENSIONS:METRIC (mm)

Model	kW	NOM. SIZE	Pump & Motor										C.W.L. W1	L.W.L. W2	*Wt. (kg)
			A	A1	A2	A3	D	D1	D2	H	H1	H2			
TO200BZ430 -61	30	200	1065	744	321	644	660	314	346	1409	1931	178	1235	480	730

*Excluding TO & Cable

200BZ430 -61


PART#	DESCRIPTION	MAIN MATERIAL / NOTE	RELATED ASTM, AISI CODE	RELATED EN CODE	QTY
1	Power Cable	Chloroprene Sheath AWG 6/4 - 32ft			1
	Power Cable	Chloroprene Sheath AWG 6/3 - 32ft			1
	Control Cable	PVC Sheath AWG 16/3 - 32ft			1
6	Staffing Box	Cast Iron	A48M Class30B	EN 1561 GJL-200	2
20	Pump Casing	Cast Iron	A48M Class35B	EN 1561 GJL-250	1
21	Impeller	Cast Iron	A48M Class35B	EN 1561 GJL-250	1
22	Suction Cover	Cast Iron	A48M Class35B	EN 1561 GJL-250	1
23	Strainer Stand	Cast Iron	A48M Class30B	EN 1561 GJL-200	1
25	Mechanical Seal	Silicon Carbide / H-60			1
26	Oil Seal	NBR / TC11014014			1
29	Oil Casing	Cast Iron	A48M Class30B	EN 1561 GJL-200	1
30	Oil Lifter	Steel (Cold Rolled)	A109/A1008	EN 10130	1
35A	Oil Plug	Stainless Steel	S30400	1.4301	2
35B	Oil Plug	Stainless Steel	S30400	1.4301	2
36	Lubricant	Turbine Oil ISO VG32 or SAE10W-20			
37	Discharge Bend	Cast Iron	A48M Class30B	EN 1561 GJL-200	1
46	Air Valve	Nylon			1
48	Welded Flange	Steel / 8"	A283 Grade D	EN 10025 S275	1
50	Motor Bracket	Cast Iron	A48M Class30B	EN 1561 GJL-200	1
52A	Upper Bearing	#6309ZC3			1
52B	Lower Bearing	#6314ZC3			2
53	Motor Protector				3
54	Shaft	Stainless Steel	S42000	1.4028	1
55	Rotor				1
56	Stator				1
60	Bearing Housing	Cast Iron	A48M Class30B	EN 1561 GJL-200	1
64	Motor Housing	Cast Iron	A48M Class30B	EN 1561 GJL-200	1
71	Shaft Sleeve	Stainless Steel	S30400	1.4301	1
72	Lifting Lug Bolt	Steel	A283 Grade D	EN 10025 S275	2
90	Leakage Sensor (Electrode)	Stainless Steel			1