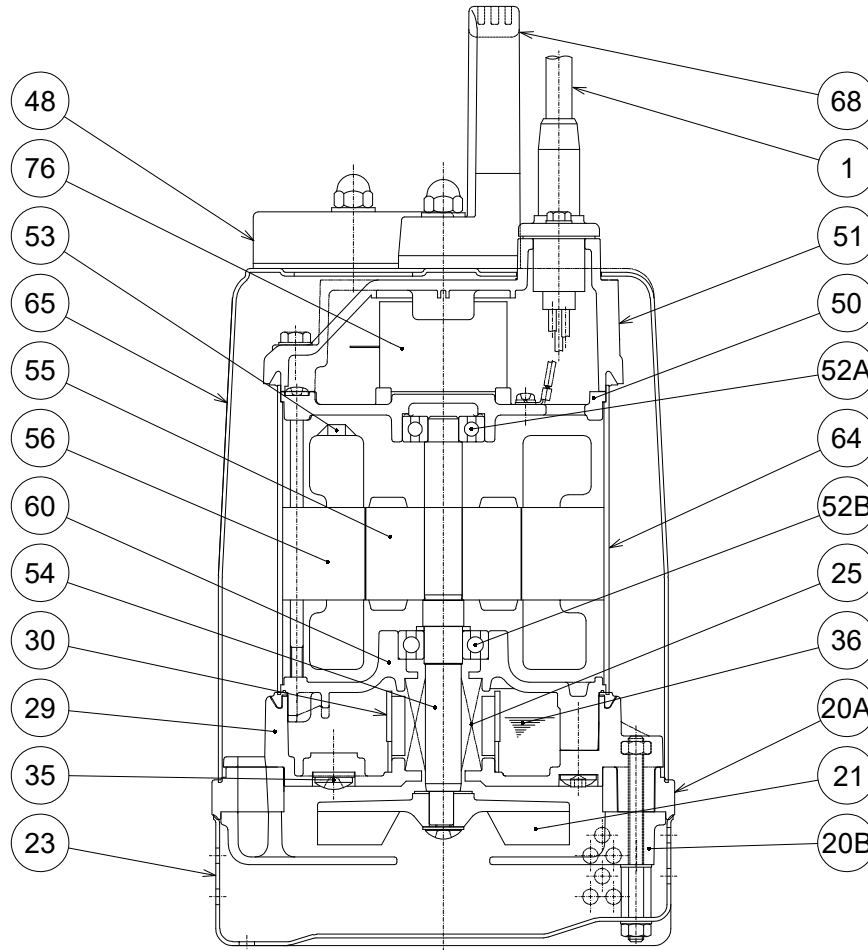


50SQ2-2.4S-61



ITEM#	DESCRIPTION	MAIN MATERIAL / NOTE	ASTM, AISI CODE	RELATED EN CODE	Q'TY
1	Power Cable	PVC Sheath AWG16/3-32ft			1
20A	Upper Pump Casing	Nitrile Butadiene Rubber			1
20B	Lower Pump Casing	Stainless Steel Casting	A743 CF-8	17445 G-X6 CrNi 18-9	1
21	Impeller	PPO Plastic w/GF20			1
23	Strainer Stand	Stainless Steel	S 30400	1.4301	1
25	Mechanical Seal	Silicon Carbide / W-14HL			1
29	Oil Casing	PPS Plastic w/(GF+MD)50			1
30	Oil Lifter	PBT Plastic w/(GF+MD)40			1
35	Oil Plug	Stainless Steel	S 30400	1.4301	1
36	Lubricant	White Oil ISO VG32			
48	Companion Flange	PBT Plastic W/GF30 / NPT 2"			1
50	Motor Bracket	Aluminum Alloy Die Casting	B85 383.0	EN 1706 AC-46100	1
51	Motor Head Cover	PPS Plastic w/(GF+MD)50			1
52A	Upper Bearing	#6201ZZC3			1
52B	Lower Bearing	#6202ZZC3			1
53	Motor Protector				1
54	Shaft	Stainless Steel	S 30400	1.4301	1
55	Rotor				1
56	Stator				1
60	Bearing Housing	Aluminum Alloy Die Casting	B85 383.0	EN 1706 AC-46100	1
64	Motor Housing	Stainless Steel	S 30400	1.4301	1
65	Outer Cover	Stainless Steel	S 31600	1.4401	1
68	Handle	ABS Resin			1
76	Capacitor				1