

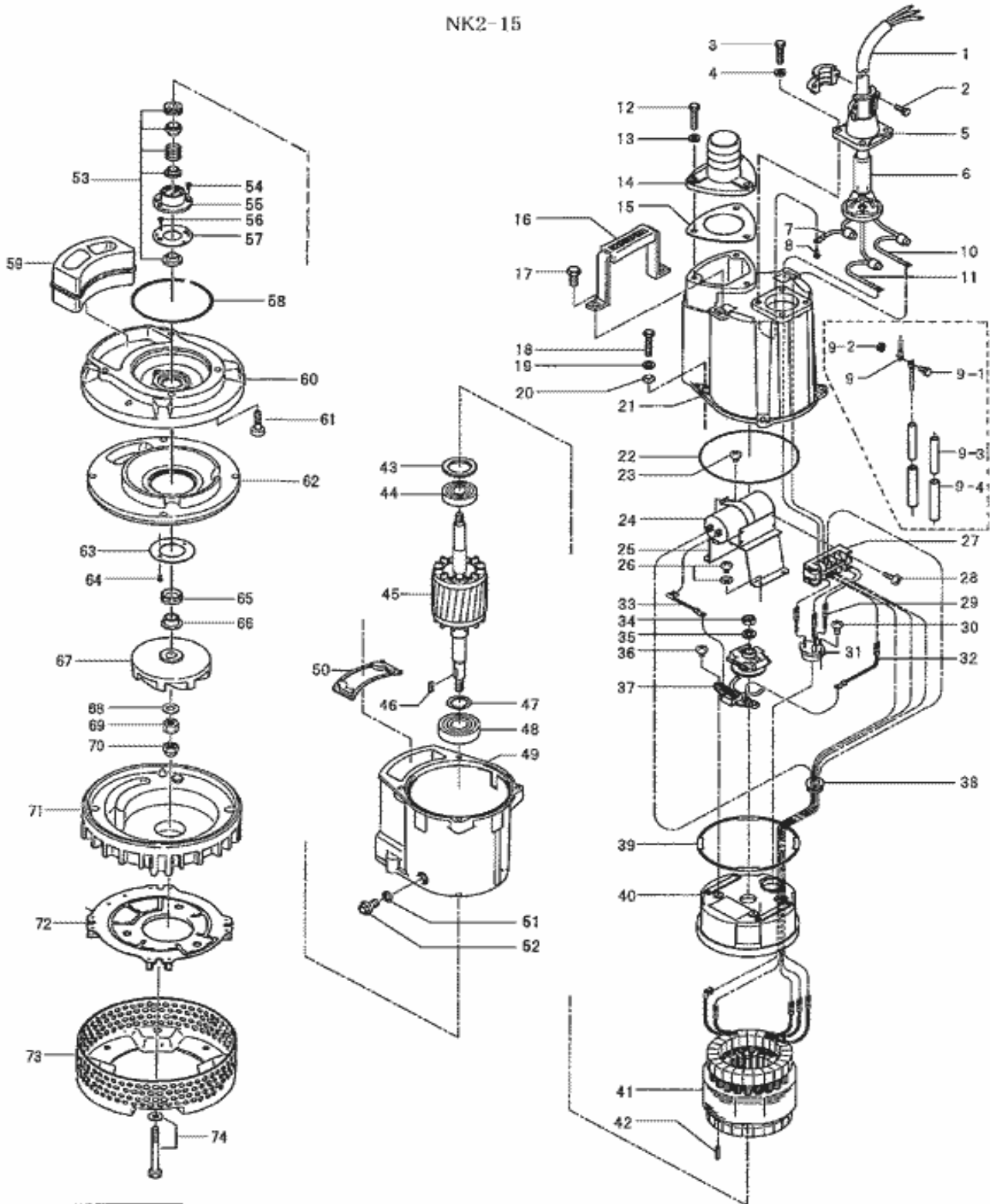
PARTS LIST		CONTRACTOR PUMPS			12/4/2012	
ITEM	PART No.	DESCRIPTION	QTY	SIZE	MATERIAL	NOTES
1	001-500-11	Cabtyre Cable Set (10m)110V-60Hz(USA)	1	2PNC3F3Cx3.5mm2	STOW	
	001-500-11	Cabtyre Cable Set (10m)220V-60Hz(USA)	1	2PNC3F3Cx3.5mm2	STOW	
2	140-033-12	Hex.Bolt	2	M6x16	SUS304	
3	140-418-15	Hex.Bolt	4	M8x25(B=12)	SUS304	
4	142-210-11	Plain Washer	4	d8.6xd13.4x1t	SUS304	
5	003-122-24	Stuffing Box	1	No.1-1(w/Clamp)	ADC	
6	008-120-14	Mould Cover	1	No.1-5	CR	
7	009-194-12	Intermediate Lead Wire	1Set	AWG-14x360L(R2-4)		
8	143-085-34	Pan Screw (w/Spring Washer)	1	M4x6	C3604	
9	009-143-16	Terminal	6	R-3.5-5S	CU	
1-Sep	143-070-10	Pan Screw	3	M5x6	SWRM	
2-Sep	141-003-58	Hex.Nut	3	M5	SWRM	
3-Sep	002-128-14	Heat Shrink Tube (Sold per meter)	m	EVA(d10x1t)	(Vm)	
4-Sep	002-164-12	Heat Shrink Tube (Sold per meter)	m	A4(d13x0.3t)	(Vm)	
10	009-222-10	Intermediate Lead Wire	1Set	AWG-12x400L(3.5Y-U)		
11	009-221-19	Intermediate Lead Wire	1Set	AWG-12x400L(3.5Y-U)		
12	140-056-11	Hex.Bolt	3	M8x30	SUS304	
13	142-127-23	Plain Washer	3	M8	SPC	
14	032-355-15	Hose Coupling	1	KTV2-15(NPT-3)	FC	
15	121-001-09	Packing	1	KTV2-15/22	NBR	
16	068-000-35	Handle (for USA)	1	KTV-15/22	SPC+Rubber	interchangeable with OLD part# 068-232-16 (does not have TSURUMI logo)
17	140-074-15	Hex.Bolt	2	M10x20	SUS304	
18	140-056-11	Hex.Bolt	4	M8x30	SUS304	
19	142-163-18	Spring Washer	4	M8	SUS304	
20	142-127-10	Plain Washer	4	M8	SUS304	
21	051-225-14	Motor Head Cover	1		ADC	
22	122-473-12	O-Ring	1	150xd3.3	NBR	
23	143-085-34	Pan Screw (w/Spring Washer)	1	M4x6	C3604	
24	076-141-12	Capacitor	1	750MF-125VAC		
25	078-115-39	Centrifugal Switch Cover	1	NK2-15	SPC	
26	143-085-34	Pan Screw (w/Spring Washer)	4	M4x6	C3604	
27	006-171-14	Terminal Box	1	NK2-15		
28	143-016-18	Pan Screw	2	M4x12	SWRM	
29	009-201-13	Intermediate Lead Wire	3Set	AWG-12x240L(3.5Y-U)		
30	143-136-15	Truss Screw	2	M4x10	SWRM	
31	053-219-11	Motor Protector 110V-60Hz(USA)	1	KA143-CCZL402	(H.C)	
	053-219-11	Motor Protector 220V-60Hz(USA)	1	KA143-CCZL402	(H.C)	
32	009-200-12	Intermediate Lead Wire	1Set	AWG-14x200L(N2-3)		
33	009-199-20	Intermediate Lead Wire	1Set	AWG-14x220L(#41802)		
34	141-119-16	Hex.Nut	1	M10 (U-nut)	SS	
35	142-128-24	Plain Washer	1	M10	SPC	
36	143-015-17	Pan Screw	2	M4x10	SWRM	
37	077-115-10	Centrifugal Switch	1	GS-114		
38	016-132-14	Lead Wire Protection Bush	1	NK2-15/22	NBR	

PARTS LIST		CONTRACTOR PUMPS			12/4/2012	
ITEM	PART No.	DESCRIPTION	QTY	SIZE	MATERIAL	NOTES
39	121-474-10	Packing	1	NK2-15/22	NBR	
40	050-416-11	Motor Bracket	1		FC	
41	056-708-11	Stator 110V-60Hz(USA)	1Set			
	056-708-11	Stator 220V-60Hz(USA)	1Set			
42	145-031-15	Spring Pin	1	#4x25l	SCM	
43	142-195-19	Wave Washer	1	6204/6303(d47x,0.3t)	SK5	
44	052-103-18	Bearing	1	6204ZZC3		
45	055-695-11	Rotor	1	w/Bearing		
46	147-128-16	Impeller Key	1	5x5x18.5l	SUS403	
47	061-161-12	Bearing Collar	1	d25.1xd36x1.6t	SPC	
48	052-108-13	Bearing	1	6305ZZC3		
49	064-000-84	Motor Frame	1		ADC	
50	121-445-12	Packing (Water Way, Upp.)	1	KTV2-15/22	NBR	
51	121-246-11	Packing	1	d10.3xd16x2t	PE	
52	035-125-13	Oil Plug	1	M10x20(B=13)	SUS304	
53	025-243-17	Mechanical Seal	1	H-20T	SIC	
54	143-070-23	Pan Screw	2	M5x6	SWRM	
55	030-144-13	Oil Lifter	1	H-20(A)(T)	Resin	
56	143-070-10	Pan Screw	2	M5x6	SWRM	
57	030-155-17	Seal Stopper	1	H-20(KTV2)	SPCC	
58	122-134-18	O-Ring	1	G-115(114.4xd3.1)	NBR	
59	121-001-04	Packing (Water Way, Low.)	1	KTV2-15/22	SBR	
60	029-000-77	Oil Casing	1	KTV2-15/22	ADC	interchangeable with OLD part#029-408-14
61	140-270-13	Hex.Socket Cap Bolt	4	M8x30	SUS304	
62	031-000-08	Wear Ring	1	KTV2-15/22	BR+NR	
63	058-000-25	Protection Plate	1	d44xd70x3t	SUS304	interchangeable with OLD part# 058-000-10
64	143-166-14	Flat Screw	2	M4x8	SUS304	
65	122-443-13	V-Ring	1	VR-20	NBR	
66	071-297-19	Shaft Sleeve	1	d16xd20x10l	SUS304	
67	021F7317	Impeller (60Hz)	1	NK2-15	FCD	
68	142-129-25	Plain Washer	1	M12	SPC	
69	141-007-10	Hex.Nut	1	M12	SUS304	
70	141-032-14	Hex.Cap Nut	1	M12	SUS304	
71	020B1918	Pump Casing	1	KTV2-15/22	BR+NR	
72	127-249-12	Fixing Plate	1	KTV2-15/22	SPCC	
73	023-432-19	Strainer Stand	1	KTV2-15/22	SPCC	
74	140-479-14	Hex.Bolt (w/Plain Washer)	4	M8x85	SUS304	
		<Packing O-Ring Set>				
	173-502-19	Packing O-Ring Set	1Set	(Marked by *)		
15	121-001-09	Packing (Hose Coupling)	1	KTV2-15/22	NBR	
22	122-473-12	O-Ring (M.Head cover/M.Frame)	1	150xd3.3	NBR	
39	121-474-10	Packing (M.Head cover/M.Frame)	1	NK2-15/22	NBR	
50	121-445-12	Packing (Water Way, Upp.)	1	KTV2-15/22	NBR	
51	121-246-11	Packing (Oil Plug)	1	d10.3xd16x2t	PE	

PARTS LIST		CONTRACTOR PUMPS				12/4/2012
ITEM	PART No.	DESCRIPTION	QTY	SIZE	MATERIAL	NOTES

EXPLODED VIEW

NK2-15



C-00151-1