

PARTS LIST		CONTRACTOR PUMPS			12/13/2012	
ITEM	PART No.	DESCRIPTION	QTY	SIZE	MATERIAL	NOTES
1	001-329-27	Power Cable 50'	1	KR-3, AWG6/4 x 50'	2PNCT.F	see 001-519-39 (w/ Terminal)
2	010-128-19	Cable Clip Rubber	1	75x80x2t	NBR	
3	010-101-16	Cable Clip	2	No.3	SPC	
4	140-035-14	Bolt	3	M6x20	SUS304	
5	141-004-17	Nut	3	M6	SUS304	
6	011-101-19	Shackle	1	6mm (M8)	SS400	
7	095-100-18	Chain	1	d5(9-Link)	SS400	
8	140-035-14	Bolt	2	M6x20	SUS304	
9	070-107-18	Cable Clamp	1	No.2/No.3	FC150	
10	140-055-10	Bolt	4	M8x25	SUS304	
11	006-127-15	Stuffing Box	1	No.3	FC200	c/w Power Cable
12	008-145-15	Rubber Boot	1	KR3-7	CR	c/w Power Cable
13	140-076-17	Bolt	4	M10x30	SUS304	
14	142-164-19	Spring Washer	4	M10	SUS304	
15	042-106-18	Stuffing Box Sheet	1	11KW	FC200	
16	122-135-19	O-Ring (S.Box Seat)	1	G-120	NBR	*
17	141-004-59	Nut	4	M6	SWRM3	see 141-004-17
18	009-107-18	Terminal (Solderless)	4	R-14-6	CU	
19	009-107-18	Terminal (Solderless)	3	R-14-6	CU	
20	140-029-28	Bolt	4	M6x10	SWRM3	see 140-029-15
21	002-115-18	Heat Shrink Tube	1	EVA(d16.5x1t)	\$/3.2ft	
22	002-116-19	Heat Shrink Tube	1	A4(d19x0.35t)	\$/3.2ft	
29-1	009-106-17	Terminal (Solderless)	2	R-8-6	CU	
29-2	009-	Grounding Wire	1	AWG8x240L, G/Y		
29	143-000-58	Pan Screw	1	M6x12, w/ S.Washer & Washer	SWRM3	
23	140-098-15	Bolt	6	M12x35	SUS304	
24	032-255-14	Hose Coupling NPT 8"	1	NPT-8" (KRS)	FC200	
25	121-144-18	Gasket (Hose Coupling)	1	KRZ8 (P.C.236xd190)	NBR	*
26	140-130-10	Bolt	4	M16x70	SUS304	
27	142-166-11	Spring Washer	4	M16	SUS304	
28	068-000-38	Handle	1	KRS819/822(L)-51/61 (P.C.330, 4holes)	SGP+SS	068-267-10 (P.C.350, 5holes) is not acceptable.
30	140-127-14	Bolt	1	M16x55	SUS304	
31	142-166-11	Spring Washer	1	M16	SUS304	
32	140-101-12	Bolt	2	M12x50	SUS304	
33	142-165-10	Spring Washer	2	M12	SUS304	
34	050-001-08	Motor Bracket	1	KRS819/822(L)-51/61	FC200	
35	122-160-13	O-Ring (M.Bracket/M.Frame)	1	G-290	NBR	*
36	121-001-44	Gasket (U.Water Way)	1	KRS819/822(L)-51/61	SBR	*
37	143-032-10	Pan Screw	2	M5x16	SWRM3	
38	142-112-25	Washer	2	M5 (N, D=10)	SPC	see 142-112-12
39	053-	Motor Protector 380/440/460V-60HZ	1	KA315-JNAL00 (B.C)		see 053-285-18(H.C)
39	053-303-13	Motor Protector 575V-60HZ	1	KA315-JNZL00 (B.C)		
40	141-004-59	Nut	3	M6	SWRM3	see 141-004-17
41	142-162-33	Spring Washer	3	M6	SWRH	see 142-162-17

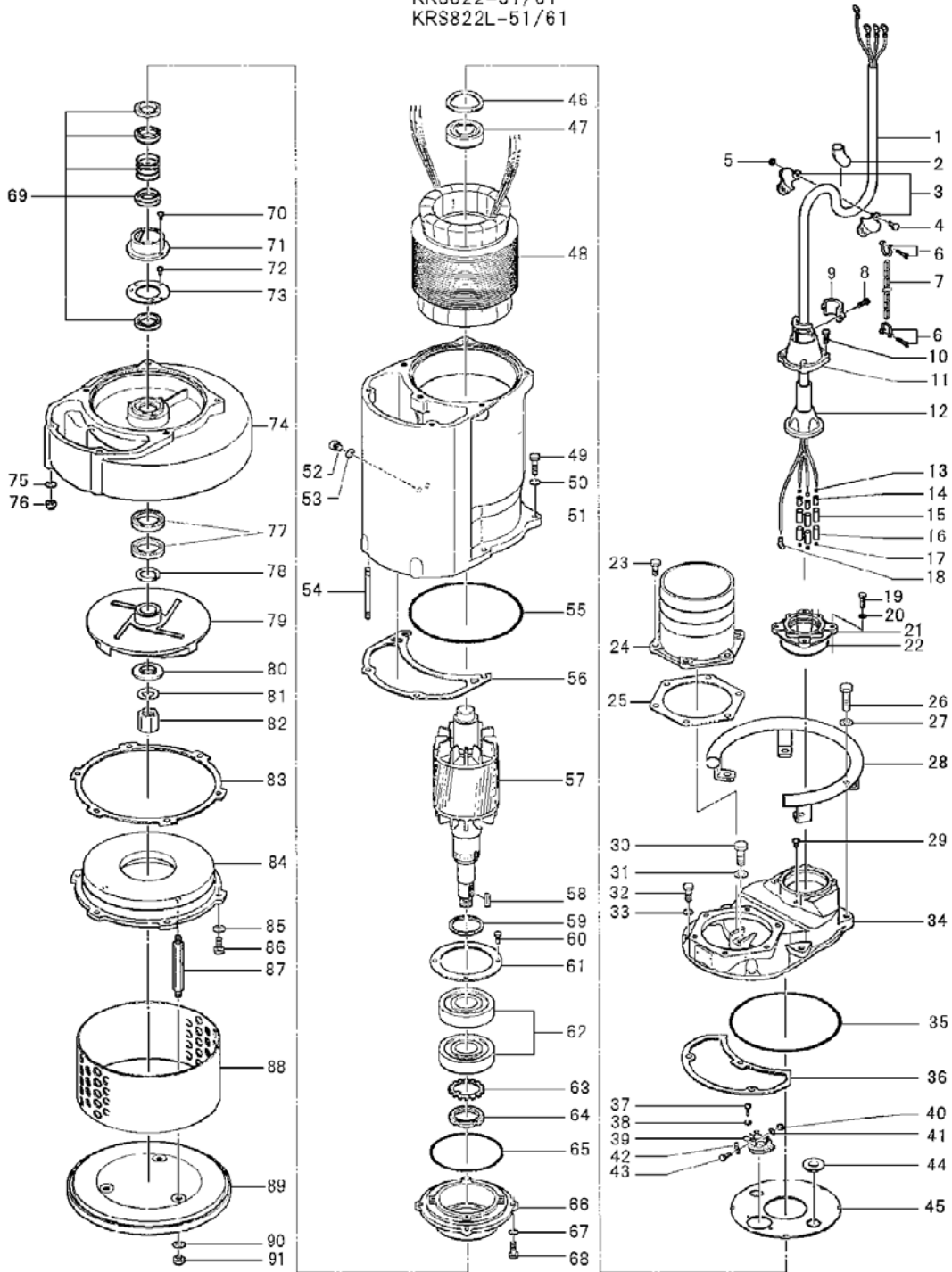
PARTS LIST		CONTRACTOR PUMPS			12/13/2012	
ITEM	PART No.	DESCRIPTION	QTY	SIZE	MATERIAL	NOTES
42	009-107-18	Terminal (Solderless)	3	R-14-6	CU	
43	140-030-35	Bolt	3	M6x12	SWRM3	see 140-030-19
44	016-000-04	Lead Wire Prot. Bush	2	d21xD52x11t	SBR	
45	058-000-39	Lead Wire Prot. Plate 400V & 500V class	1	KRS819/822(L)-51/61 (d114xD290x1.0t).	SPCC	see 058-000-38 for 200V class
46	142-000-70	Wave Washer	1	#6309, d83xD99x7H, 0.9T	SK-5	142-201-19 is not acceptable.
47	052-112-36	Ball Bearing (Upper)	1	6309ZZC3 (SRL Grease)		see 052-112-10
48	056-	Stator 380/440/460V-60HZ	1	KRS822(L)-51/61 (380/420-50, 380/460-60)		
48	056-	Stator 575V-60HZ	1	KRS822(L)-51/61 (500/525-50, 575-60)		
49	140-126-13	Bolt	4	M16x50	SUS304	
50	142-166-11	Spring Washer	4	M16	SUS304	
51	064-001-22	Motor Frame	1	KRS819/822(L)-51/61	FC200	
52	035-113-18	Oil Plug	2	M12x14 (Socket Bolt, J=10)	SUS304	
53	121-247-12	Gasket (Oil Plug)	2	d11.8xD18x2t	PE-sheet	*
54	144-148-13	Stud Bolt	2	M12x175 (18/18)	SUS403	
55	122-161-14	O-Ring (M.Frame/P.Casing)	1	G-300	NBR	*
56	121-001-41	Gasket (L.Water Way)	1	KRS819/822(L)-51/61	NBR	* 121-132-13 (for -50/60) is not acceptable.
57	055-002-80	Rotor and Shaft	1	KRS822(L)-51/61		
58	147-057-13	Key	1	12x8x50L (R/C)	SUS420J2	= 147-142-16. see 147-007-18 (SUS304)
59	061-000-14	Bearing Collar	1	d70xD90x3t	SPCC	= 061-000-17. see 061-162-13
60	140-054-48	Bolt	4	M8x20	SWRM3	see 140-054-19
61	062-000-21	Bearing Cover	1	P.C.170, d130xD190x4.5t	SS400	062-216-16 (d129xD195) is acceptable.
62	052-224-16	Ball Bearing (Lower)	1set	6314ZZD2C3 (SRL Grease)		see 052-145-12
63	142-247-17	Bearing Washer	1	AW14	SPCC	
64	141-079-13	Bearing Nut	1	AN14	SS400	
65	122-151-11	O-Ring (M.Frame/B.Housing)	1	G-200	NBR	*
66	060-001-74	Bearing Housing	1	KRS819/822(L)-51/61	FC200	
67	142-164-35	Spring Washer	4	M10	SWRH	see 142-164-19
68	140-076-33	Bolt	4	M10x30	SWRM3	see 140-076-17
69	025-197-15	Mechanical Seal	1	H-45	SiC	see 025-313-19
70	143-070-23	Pan Screw	2	M5x6, w/ Scotch Grip	SWRM3	
71	030-140-19	Oil Lifter	1	H-45	PBT+GF/MD40	
72	143-070-10	Pan Screw	3	M5x6	SWRM3	
73	030-149-18	Seal Stopper	1	H-40/45	SPCC	
74	020-464-11	Pump Casing	1	KRS-8H/8M	FC200	
75	142-165-10	Spring Washer	2	M12	SUS304	
76	141-032-14	Acorn Nut	2	M12	SUS304	
77	026-117-14	Oil Seal	2	TC-709212	NBR	
78	040-111-12	Impeller Shim		d42.5xD58x0.3t (Type A)	SUS304	
79	021-739-26	Impeller	1	KRS-822-60Hz	FCD700-H	KRS822-60Hz
79	021-321-18	Impeller	1	KRS-B8	FCD700-H	KRS822L-60Hz
80	142-387-10	Impeller Washer	1	d8xD31x13t	SUS304	
81	142-171-19	Spring Washer	1	M30	SUS304	
82	157-005-17	Impeller Nut	1	M30, P3.5 (Acorn Nut)	S35C	157-022-10(NEW)
83	120-106-15	Gasket (S.Cover)		d360xD390x0.5t	PE-sheet	

PARTS LIST		CONTRACTOR PUMPS				12/13/2012
ITEM	PART No.	DESCRIPTION	QTY	SIZE	MATERIAL	NOTES
84	022-144-21	Suction Cover	1	KRZ-19/22H	FC200	
85	142-129-25	Washer	6	M12	SPC	see 142-129-12 (SUS304)
86	140-098-15	Bolt	6	M12x35	SUS304	
87	144-127-29	Stud Bolt	3	M12x207 (20/20)	SUS403	
88	023-120-11	Suction Strainer	1	KRZ-19/22KW	SPC	
89	049-117-15	Bottom Plate	1	KRS-C8/A8	FCD700	
90	142-129-25	Washer	3	M12	SPC	see 142-129-12 (SUS304)
91	141-007-10	Nut	3	M12	SUS304	
<Gasket O-Ring Set>						
	173-003-17	Gasket O-Ring Set	1set	(*)		
16	122-135-19	O-Ring (S.Box Seat)	1	G-120	NBR	*
25	121-144-18	Gasket (Hose Coupling)	1	KRZ8 (P.C.236xd190)	NBR	*
35	122-160-13	O-Ring (M.Bracket/M.Frame)	1	G-290	NBR	*
36	121-001-44	Gasket (U.Water Way)	1	KRS819/822(L)-51/61	SBR	*
53	121-247-12	Gasket (Oil Plug)	2	d11.8xD18x2t	PE-sheet	*
55	122-161-14	O-Ring (M.Frame/P.Casing)	1	G-300	NBR	*
56	121-001-41	Gasket (L.Water Way)	1	KRS819/822(L)-51/61	NBR	* 121-132-13 (for -50/60) is not acceptable.
65	122-151-11	O-Ring (M.Frame/B.Housing)	1	G-200	NBR	*
		Lubricant		Turbine Oil#32 6,500 mL (220 floz)	(SAE 10W-20)	

PARTS LIST		CONTRACTOR PUMPS				12/13/2012
ITEM	PART No.	DESCRIPTION	QTY	SIZE	MATERIAL	NOTES

EXPLODED VIEW

KRS819-51/61
 KRS822-51/61
 KRS822L-51/61



C-01535-1