

PARTS LIST		CONTRACTOR PUMPS			11/12/2013	
ITEM	PART No.	DESCRIPTION	QTY	SIZE	MATERIAL	NOTES
1	001-314-32	Cabtyre Cable Set (50') 60Hz (USA)	1	2PNCTF4Cx8mm2	KR-3	
2	006-127-15	Stuffing Box	1	No.3	FC	
3	140-055-10	Hex.Bolt	4	M8x25	SUS304	
4	070-107-18	Cable Clamp	1		FC	
5	140-035-14	Hex.Bolt	2	M6x20	SUS304	
6	008-147-17	Mould Cover 60Hz (USA)	1	KR3-9	CR	
7	010-120-18	Cable Clip	1	No.2-1	SPC	
8	010-122-10	Cable Clip Rubber	1	No.2	NBR	
9	141-004-33	Hex.Nut	1	M6	S35C	
10	140-032-37	Hex.Bolt	1	M6x15	SWRM	
11	095-131-18	Chain	1	4mm(3L)	SS	
12	011-110-11	Shackle	1	6mm(M8,SC)	SS	
13	140-104-15	Hex.Bolt	4	M12x65	SUS304	
14	142-165-10	Spring Washer	4	M12	SUS304	
15	070-103-10	L-Shape Fitting	1	KT-55	SPC	
16	009-129-16	Terminal	3	E (Small)	CU	
17	009-101-12	Terminal(C/W Screw)	3	d12x(d6.6xd6.6)x25l	C3604	
18	002-129-15	Heat Shrink Tube (Sold per meter)	m	EVA(d14x1t)	(V/m)	
19	002-132-11	Heat Shrink Tube (Sold per meter)	m	A4(d17x0.27t)	(V/m)	
20	032-254-13	Hose Coupling 6"	1	NPT-6(KRS)	FC	
	032-378-14	Hose Coupling 4" OPTIONAL		NPT-4	FC	OPTION
21	140-000-01	Hex.Bolt	5	M10x30(B=14)	SUS304	
22	122-285-15	O-Ring	1	155xd3.1	NBR	*
23	140-100-11	Hex.Bolt	1	M12x45	SUS304	
24	142-165-10	Spring Washer	1	M12	SUS304	
25	068-160-12	Handle	1	KRS-D6/B6(T)	SGP+SPC	
26	143-041-12	Pan Screw	1	M6x8	SWRM	
27	142-162-33	Spring Washer	1	M6	SWRH	
28	009-106-17	Terminal	1	R-8-6	CU	
29	050-365-14	Motor Bracket	1		FC	
30	122-250-11	O-Ring	1	230xd3.8	NBR	*
31	053-317-10	Motor Protector 208/230V-60Hz(USA)	1	KA315-JTAL00	(B.C)	
		Motor Protector 460V-60Hz(USA)	1			
		Motor Protector 575V-60Hz(USA)	1			
32	143-125-24	Pan Screw (w/Spring Washer/Plain Washer)	2	M4x14	SWRM	
33	142-199-13	Wave Washer	1	6208/6307	SK5	
34	052-110-18	Bearing	1	6307ZZC3		
35	058-147-12	Lead Wire Protection Plate	1	d100xd204x1.6t	Bakelite	
36	055-564-10	Rotor	1Set			
37	147-021-18	Impeller Key	1	8x8x44l	SUS420	
38	056-492-19	Stator 208/230V-60Hz(USA)	1Set			
		Stator 460V-60Hz(USA)	1Set			
		Stator 575V-60Hz(USA)	1Set			
39	121-304-18	Packing (Water Wav. Upp.)	1	KRS-7.5/11(T)	NBR	*

* Indicates items included in set

PARTS LIST		CONTRACTOR PUMPS			11/12/2013	
ITEM	PART No.	DESCRIPTION	QTY	SIZE	MATERIAL	NOTES
40	064-450-10	Motor Frame	1		FC	
41	140-100-11	Hex.Bolt	4	M12x45	SUS304	
42	121-247-12	Packing	1	d12.3xd18x2t	PE	*
43	035-113-18	Oil Plug	1	M12x14	SUS304	
44	121-129-17	Packing (Water Way, Low.)	1	KRS-7.5/11	NBR	*
45	122-311-11	O-Ring	1	220xd3.5	NBR	*
46	140-029-28	Hex.Bolt	3	M6x10	SWRM	
47	062-158-19	Bearing Fixing Plate	1	d95xd144x4.5t(6Hole)	SPCC	
48	061-142-17	Bearing Collar	1	d50xd70x3t	SPC	
49	052-113-11	Bearing	1	6310ZZC3		
50	146-029-13	Retaining Ring	1	C50	SK5	
51	122-140-17	O-Ring	1	G-145(144.4xd3.1)	NBR	*
52	060-222-19	Bearing Housing	1		FC	
53	140-054-48	Hex.Bolt	4	M8x20	SWRM	
54	025-195-13	Mechanical Seal	1	H-35	SiC	
55	143-070-23	Pan Screw	2	M5x6	SWRM	
56	030-156-18	Oil Lifter	1	H-35(A)(T)	Resin	
57	143-070-10	Pan Screw	3	M5x6	SWRM	
58	030-150-12	Seal Stopper	1	H-35(A)(T)	SPCC	
59	020-380-12	Pump Casing (60Hz)	1	KRS-B6	FC	
60	142-165-10	Spring Washer	1	M12	SUS304	
61	140-113-17	Hex.Bolt	1	M12x120	SUS304	
62	026-123-13	Oil Seal	1	TC-406211	NBR	
63	071-128-47	Shaft Sleeve	1	KRS-7.5/11KW	SUS403	
64	040-110-24	Impeller Shim		d32.5xd58x0.3t	SUS304	
65	021-572-16	Impeller (60Hz)	1	KRS2-150	HiCrFC	
66	024-126-23	Connection Rod	1	KRS-100	FCMB	
67	024-120-14	Stirrer	1	GPN-80	HiCrFC	
68	142-130-16	Plain Washer	1	M16	SUS304	
69	141-008-40	Hex.Nut	1	M16(H=10)	SUS304	
70	140-139-19	Hex.Bolt	1	M16x143(B=19)	SUS304	
71	120-112-14	Packing (S.Cover)		d260xd314x0.5t	PE	*
72	033-110-19	Suction Plate	1	KRS-100	HiCrFC	
73	140-057-41	Hex.Bolt	3	M8x35(B=14)	SWRM	
74	022-420-24	Suction Cover	1	KRS-100	FC	
75	142-129-25	Plain Washer	3	M12	SPC	
76	140-097-14	Hex.Bolt	3	M12x30	SUS304	
77	142-163-18	Spring Washer	3	M8	SUS304	
78	141-005-18	Hex.Nut	3	M8	SUS304	
79	142-129-25	Plain Washer	3	M12	SPC	
80	144-478-15	Stud Bolt	3	M12x111(21/25)	SUS403	
81	023-241-19	Strainer Stand	1Set	KRS-100	SPC+SGP	
82	142-165-10	Spring Washer	3	M12	SUS304	
83	141-007-10	Hex.Nut	3	M12	SUS304	



MODEL KRS2-150

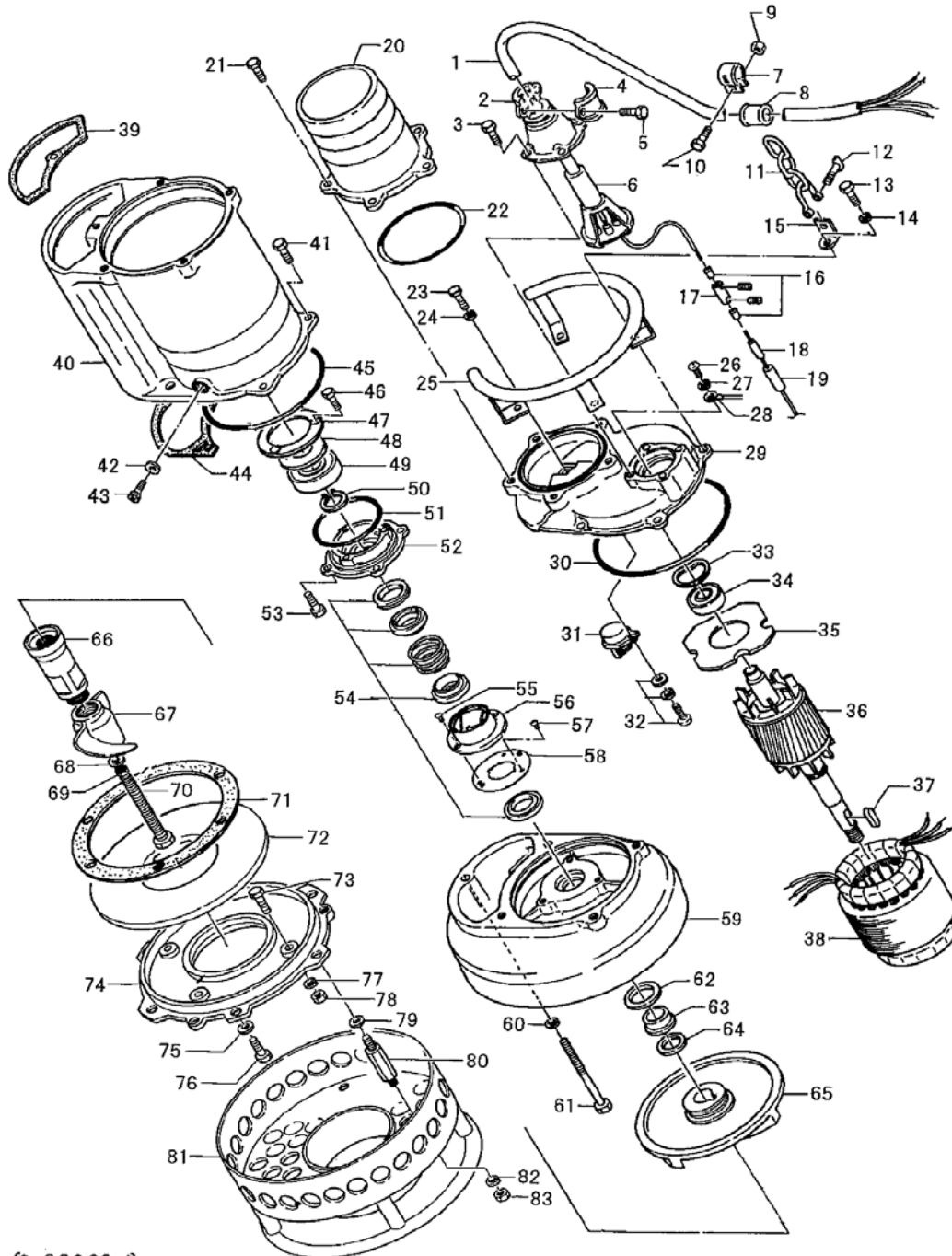
PARTS LIST		CONTRACTOR PUMPS				11/12/2013
ITEM	PART No.	DESCRIPTION	QTY	SIZE	MATERIAL	NOTES
		Packing O-Ring Set				
	173-436-11	Packing O-Ring Set	1Set	(Marked by *)		
22	122-285-15	O-Ring (Hose Coupling)	1	155xd3.1	NBR	*
30	122-250-11	O-Ring (M.Bracket/M.Frame)	1	230xd3.8	NBR	*
39	121-304-18	Packing (Water Way, Upp.)	1	KRS-7.5/11(T)	NBR	*
42	121-247-12	Packing (Oil Plug)	1	d12.3xd18x2t	PE	*
44	121-129-17	Packing (Water Way, Low.)	1	KRS-7.5/11	NBR	*
45	122-311-11	O-Ring (M.Frame/P.Casing)	1	220xd3.5	NBR	*
51	122-140-17	O-Ring (M.Frame/Brq.Housing)	1	G-145(144.4xd3.1)	NBR	*
		Lubricant		Turbine Oil VG32 2.300ml		

* Indicates items included in set

PARTS LIST		CONTRACTOR PUMPS			11/12/2013	
ITEM	PART No.	DESCRIPTION	QTY	SIZE	MATERIAL	NOTES

EXPLODED VIEW

KRS2-150



(G-00008-1)