

PARTS LIST		CONTRACTOR PUMPS			11/15/2013	
ITEM	PART No.	DESCRIPTION	QTY	SIZE	MATERIAL	NOTES
1	011-110-11	Shackle	1	6mm(M8,SC)	SS	
2	141-005-18	Hex.Nut	3	M8	SUS304	
3	010-143-10	Cable Clip	2	No.5	SPC	
4	140-054-19	Hex.Bolt	3	M8x20	SUS304	
5	001-302-11	Cabtyre Cable (per meter) 460/575V-60Hz (USA)	15m	2PNCTF4Cx22mm2	(Vm)	
6	140-078-19	Hex.Bolt	2	M10x35	SUS304	
7	142-164-19	Spring Washer	2	M10	SUS304	
8	003-000-20	Gland	1	SHD-150,KRS1022	FC	
9	005-104-13	Bush Washer 60Hz(USA)	2	d33xd54x3.2t	SPC	
10	004-112-11	Cable Bush 60Hz(USA)	1	No.11	SBR	
11	006-000-45	Stuffing Box	1	KRS/SHD	FC	
12	122-135-19	O-Ring	1	G-120(119.4xd3.1)	NBR	*
13	140-076-17	Hex.Bolt	4	M10x30	SUS304	
14	142-164-19	Spring Washer	4	M10	SUS304	
15	143-041-12	Pan Screw	1	M6x8	SWRM	
16	009-117-11	Terminal	4	R-22-6	CU	
17	009-117-11	Terminal	3	R-22-6	CU	
18	140-029-28	Hex.Bolt	3	M6x10	SWRM	
19	141-004-59	Hex.Nut	3	M6	SWRM	
20	002-115-18	Heat Shrink Tube (Sold per meter)	m	EVA(d16.5x1t)	(Vm)	
21	002-116-19	Heat Shrink Tube (Sold per meter)	m	A4(d20x0.35t)	(Vm)	
22	140-153-19	Hex.Bolt	6	M20x75	SUS304	
23	142-168-13	Spring Washer	6	M20	SUS304	
24	032-388-17	Hose Coupling	1			
25	121-110-28	Packing	1	JIS10Kx250mm	NR	*
26	035-124-12	Air Tightness Test Plug (1st)	1	M10x15	SUS304	
26	035-113-18	Air Tightness Test Plug (2nd)	1	M12x14	SUS304	
27	121-246-11	Packing (1st)	1	d10.3xd16x2t	PE	*
27	121-247-12	Packing (2nd)	1	d12.3xd18x2t	PE	*
28	072-100-20	Eye Bolt	1	M10	SUS304	
29	050-453-10	Motor Bracket (1st)	1	(M10)	FC	
29	050-453-23	Motor Bracket (2nd)	1	(M12)	FC	
30	140-130-10	Hex.Bolt	6	M16x70	SUS304	
31	142-166-11	Spring Washer	6	M16	SUS304	
32	122-467-13	O-Ring	1	266.3xd5.7	NBR	*
33	142-396-12	Wave Washer	1	d75xd89x0.8t	SK5	
34	122-129-10	O-Ring	1	G-90(89.4xd3.1)	NBR	*
35	052-111-19	Bearing	1	6308ZC3		
36	143-032-10	Pan Screw	2	M5x16	SWRM	
37	142-161-32	Spring Washer	2	M5	SWRH	
38	142-125-21	Plain Washer	2	M5	SPC	
39		Motor Protector				
40	058-186-13	Lead Wire Protection Plate	1	d110xd264x3.2t	SPHC	
41	016-135-17	Lead Wire Protection Bush	1	KG-032(L=120)	Nylon	

PARTS LIST		CONTRACTOR PUMPS			11/15/2013	
ITEM	PART No.	DESCRIPTION	QTY	SIZE	MATERIAL	NOTES
42	055-771-12	Rotor	1Set			
43	147-007-18	Impeller Key	1	12x8x50l	SUS304	
44	140-030-35	Hex.Bolt	3	M6x12	SWRM	
45	142-162-33	Spring Washer	3	M6	SWRH	
46	142-126-22	Plain Washer	3	M6	SPC	
47	141-004-59	Hex.Nut	3	M6	SWRM	
48	009-107-18	Terminal	3	R-14-6	CU	
49		Stator	1Set			
50	122-312-12	O-Ring	1	430xd5.7	NBR	*
51	064-515-14	Motor Frame	1		FC	
52	122-475-14	O-Ring	1	457.3xd5.7	NBR	*
53	065-362-17	Outer Cover	1		SS	
54	122-475-14	O-Ring	1	457.3xd5.7	NBR	*
55	140-054-48	Hex.Bolt	4	M8x20	SWRM	
56	142-163-34	Spring Washer	4	M8	SWRH	
57	062-225-18	Bearing Fixing Plate	1	d115xd168x4.5t	SS	
58	052-143-10	Bearing	1Set	6312ZZD2C3		
59	142-245-15	Bearing Washer	1	AW12	SPCC	
60	141-077-11	Bearing Nut	1	AN12	SS	
61	026-111-21	Oil Seal	1	SC-456812	NBR	
62	122-467-13	O-Ring	1	266.3xd5.7	NBR	*
63	060-437-19	Bearing Housing	1		FC	
64	142-165-10	Spring Washer	6	M12	SUS304	
65	140-100-11	Hex.Bolt	6	M12x45	SUS304	
66	035-102-30	Oil Plug	3	M12x16(B=21)	SUS304	
67	122-259-10	O-Ring	3	12xd3	NBR	*
68	122-312-12	O-Ring	1	430xd5.7	NBR	*
69	122-348-17	O-Ring	1	255xd5.7	NBR	*
70	020-535-14	Pump Casing	1	KRS-10M	FC	
71	142-165-10	Spring Washer	6	M12	SUS304	
72	140-303-16	Hex.Socket Cap Bolt	6	M12x40	SUS304	
73	025-000-62	Mechanical Seal	1	H-45X	SiC	changed from 025-197-15 by TB M63-003
74	143-070-23	Pan Screw	2	M5x6	SWRM	
75	030-140-19	Oil Lifter	1	H-45	Resin	
76	143-070-10	Pan Screw	3	M5x6	SWRM	
77	030-149-18	Seal Stopper	1	H-40/45	SPCC	
78	122-330-16	O-Ring	1	155xd3.8	NBR	*
79	028-123-19	Seal Housing	1	KRS-10M	FC	
80	140-268-18	Hex.Socket Cap Bolt	6	M8x20	SUS304	
81	026-117-14	Oil Seal	2	TC-709212	NBR	
82	021-824-16	Impeller (60Hz)	1	KRS1022-60	FCD	
83	142-134-23	Plain Washer	1	M30	SPC	
84	157-002-14	Impeller Nut	1	M30,P3.5	SS	
85	140-052-17	Hex.Bolt	1	M8x16	SUS304	

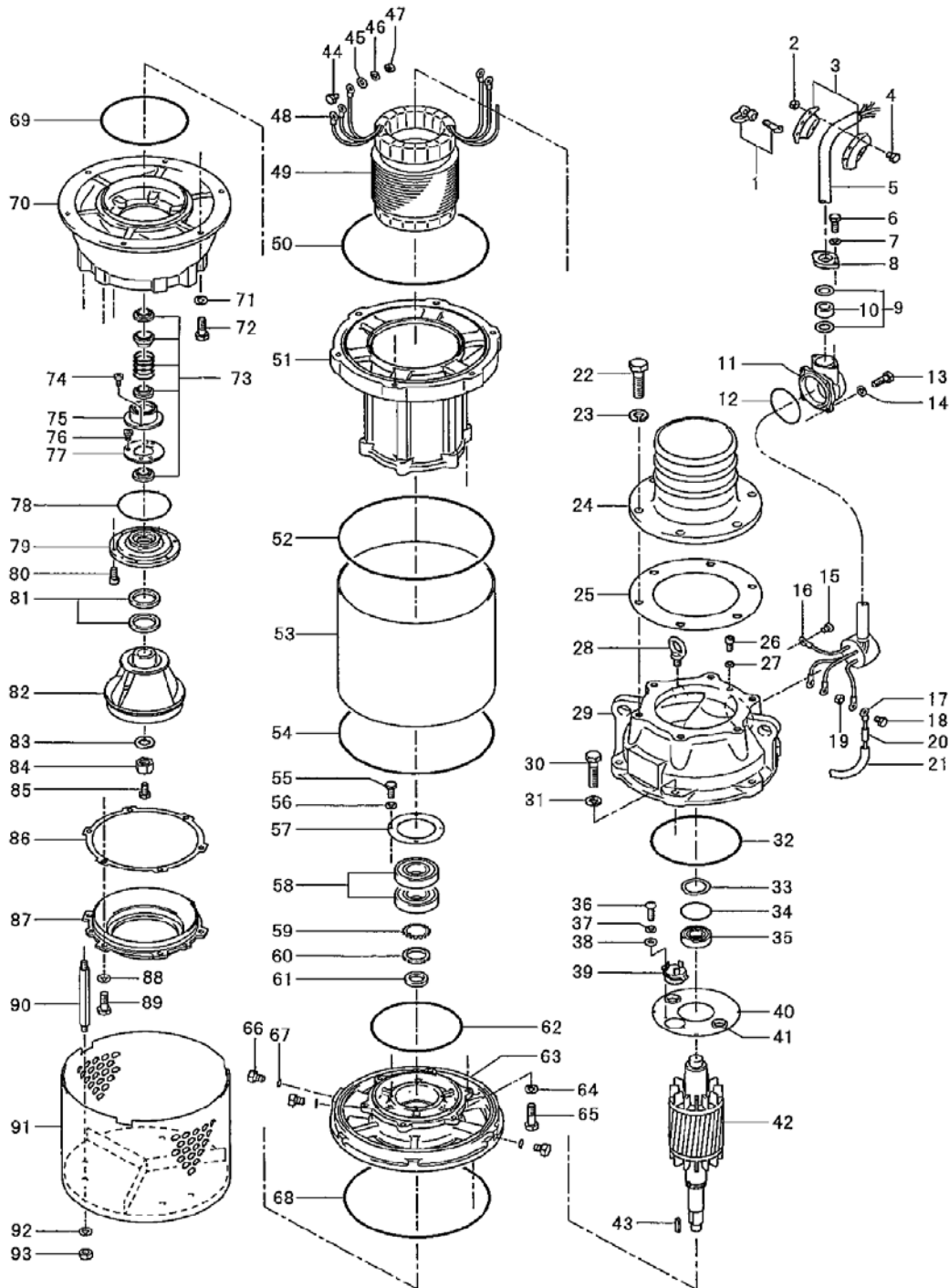
* Indicates items included in set

PARTS LIST		CONTRACTOR PUMPS				11/15/2013
ITEM	PART No.	DESCRIPTION	QTY	SIZE	MATERIAL	NOTES
86	120-103-12	Packing (S.Cover)		d321xd356x0.5t	PE	*
87	022-527-19	Suction Cover	1	KRS-10M	FC	
88	142-165-10	Spring Washer	6	M12	SUS304	
89	140-098-15	Hex.Bolt	6	M12x35	SUS304	
90	144-127-29	Stud Bolt	3	M12x207(20/20)	SUS403	
91	023-000-49	Strainer Stand	1Set	KRS-10M	SS	interchangeable with OLD part# 023-286-29
92	142-165-10	Spring Washer	3	M12	SUS304	
93	141-007-10	Hex.Nut	3	M12	SUS304	
		Packing O-Ring Set				
	173-528-11	Packing O-Ring Set	1Set	(Marked by *)		
12	122-135-19	O-Ring (S.Box)	1	G-120(119.4xd3.1)	NBR	*
25	121-110-28	Packing (Hose Coupling)	1	JIS10Kx250mm	NR	*
27	121-246-11	Packing (Air Tightness Test Plug)(1st)	1	d10.3xd16x2t	PE	*
27	121-247-12	Packing (Air Tightness Test Plug)(2nd)	1	d12.3xd18x2t	PE	*
32	122-467-13	O-Ring (M.Bracket/M.Frame)	1	266.3xd5.7	NBR	*
34	122-129-10	O-Ring (Upp. Bearing)	1	G-90(89.4xd3.1)	NBR	*
50	122-312-12	O-Ring (M.Bracket/M.Frame)	1	430xd5.7	NBR	*
52	122-475-14	O-Ring (Out.Cover/Brq.Housing)	1	457.3xd5.7	NBR	*
54	122-475-14	O-Ring (M.Frame/Out.Cover)	1	457.3xd5.7	NBR	*
62	122-467-13	O-Ring (M.Frame/Brq.Housing)	1	266.3xd5.7	NBR	*
67	122-259-10	O-Ring (Oil Plug)	3	12xd3	NBR	*
68	122-312-12	O-Ring (Brq.Housing/P.Casing)	1	430xd5.7	NBR	*
69	122-348-17	O-Ring (Brq.Housing/S.Cover)	1	255xd5.7	NBR	*
78	122-330-16	O-Ring (P.Casing/Seal Housing)	1	155xd3.8	NBR	*
		Lubricant		Turbine Oil VG32 3.500ml		

PARTS LIST		CONTRACTOR PUMPS				11/15/2013
ITEM	PART No.	DESCRIPTION	QTY	SIZE	MATERIAL	NOTES

EXPLODED VIEW

KRS1022-50/60



C-00231-1