

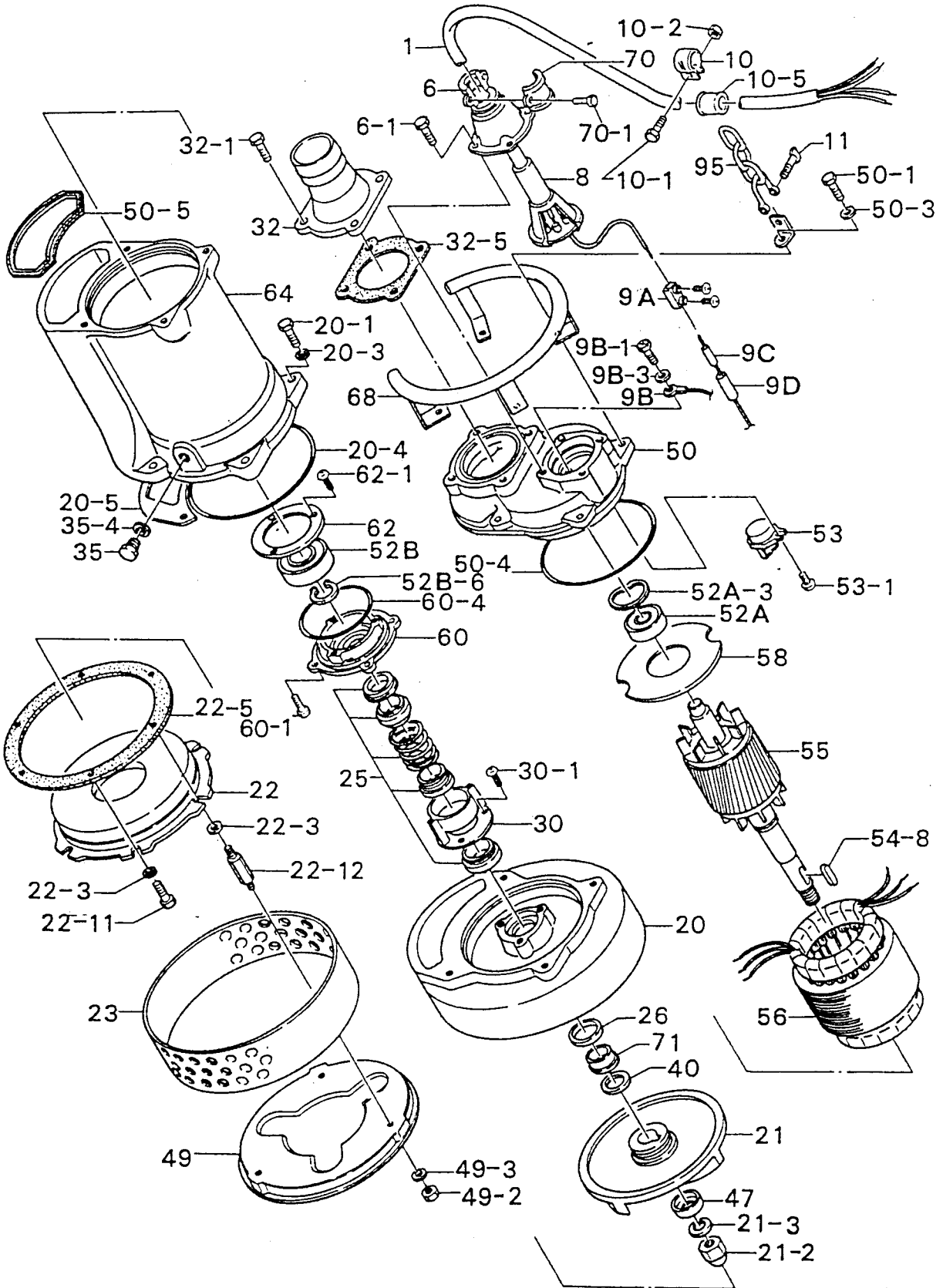
PARTS PRICE LIST

KRS2-A3

IKR2A3A

Control Number :		PLPA-IKR2A3A-02	Supercedes:		PLPA-IKR2A3A-01	(10/15/99)	
ITEM	PARTS NO.	DESCRIPTION	Q'TY	SIZE	MATERIAL	PRICE (\$)	NOTE
1	001-311-39	Cab-tyre Cable	1	AWG14 x 49'	2PNCT.F	509.90	
6	006-126-14	Stuffing Box	1	No.2	FC	40.00	
6-1	140-055-10	Hex. Bolt	4	M8x25L	SUS304	0.80	
8	008-142-12	Rubber Boot	1		CR	12.10	
9A	009-126-13	Solderless Terminal	3	AWG16	Nylon	1.20	
9B	009-116-10	Solderless Terminal	1	R-2-4	CU	0.40	
9B-1	143-013-15	Cross Pan Screw	1	M4x6L	SWRM	0.20	
9C	002-115-18	Heat Shrink Tube	1	NST-150	\$/3.2ft	13.30	
9D	002-116-19	Heat Shrink Tube	1	NST-120	\$/3.2ft	14.80	
10	010-120-18	Cable Clip	1	No.2-1	SPC	5.00	
10-1	140-032-11	Hex. Bolt	1	M6x15L	SUS304	0.30	
10-2	141-004-33	Hex. Nut	1	M6	SUS304	0.20	
10-5	010-124-15	Clip Rubber	1	No.3	NBR	1.20	
11	011-110-11	Shackle	1		SS	2.20	
20	020-381-13	Pump Casing	1		FC20	325.00	
20-1	140-099-16	Hex. Bolt	4	M12x40L	SUS304	2.50	
20-4	122-309-16	O-Ring	1	190x3.5	NBR		*
20-5	121-127-15	Packing	1		NBR		*
21	021-533-44	Impeller	1	60Hz (A3)	FCD	187.20	
21-2	141-034-16	Hex. Cap Nut	1	M20	SUS304	11.80	
21-3	142-168-26	Spring Washer	1	M20	SWRH	0.40	
22	022-365-20	Suction Cover	1		FC20	61.70	
22-3	142-145-27	Plain Washer	6	M12	SPC	0.20	
22-5	120-134-12	Packing	1		Poly.Sheet	3.10	
22-11	140-096-13	Hex. Bolt	3	M12x25L	SUS304	2.10	
22-12	144-121-23	Stud Bolt	3	M12x86L(T)	SUS403	11.20	
23	023-211-10	Strainer	1		SPC	35.50	
25	025-193-11	Mechanical Seal	1	H-25	SIC	236.80	
26	026-106-23	Oil Seal	1	DD-305011	NBR	5.80	
30	030-119-19	Oil Ring	1		SPC	4.40	
30-4	143-070-10	Cross Pan Screw	2	M5x6L	SWRM	0.10	
32	032-161-12	Hose Coupling	1	NPT-3"	FC	83.50	
32-1	140-076-46	Hex. Bolt	4	M10x30L	SUS410	1.60	
32-4	122-132-16	O-Ring	1	G-105(3.1)	NBR	2.10	*
35	035-113-18	Oil Plug	1	M12x14L	SUS304	3.60	
35-4	121-247-12	Packing	1	11.8x18x2t	Poly.Sheet	0.60	*
40	040-108-29	Impeller Shim	1	22.5x45x0.3t	SUS304	1.50	
47	047-105-14	Impeller Prot. Cover	1	No.4	SPC	3.30	
49	049-133-20	Bottom Plate	1		SPC	41.10	
49-2	141-007-10	Hex. Nut	3	M12	SUS304	1.30	
50	050-362-11	Motor Bracket	1		FC	605.30	
50-1	140-081-15	Hex. Bolt	4	M10x50L	SUS304	2.50	
50-4	122-285-15	O-Ring	1	155x3.1	NBR		*
50-5	121-302-16	Packing	1		NBR		*
50-31	142-164-19	Spring Washer	4	M10	SUS304	0.30	
50-32	142-128-24	Plain Washer	1	M10	SPC	0.20	
52A	052-108-13	Ball Bearing	1	#6305ZZC3		14.50	
52A-3	142-197-11	Wave Washer	1	#6305	SK-5	2.40	
52B	052-109-14	Ball Bearing	1	#6306ZZC3		17.90	
52B-6	146-019-10	Stop Ring	1	C-30	SK-5	2.40	
53	053-195-10	Motor Protector	1	KA313GGXL103	220V	162.80	
53	053-327-13	Motor Protector	1	KA313-GQXL102	440V	113.50	
53-1	143-126-12	Cross Pan Screw	2	M4x12L	SWRM	0.30	
53-31	142-160-31	Spring Washer	2	M4	SWRH	0.20	
53-32	142-124-20	Plain Washer	2	M4	SPC	0.20	
54-8	147-022-19	Impeller Key	1	7x7x28L	SUS420	10.40	
55	055-560-16	Rotor and Shaft	1			524.20	
56	056-488-12	Motor Stator	1		220V	554.90	
58	058-126-15	L.Wire Prot. Plate	1	75x155x1.6	Resin	14.80	
60	060-270-12	Bearing Housing	1		FC	217.60	
60-1	140-033-37	Hex. Bolt	4	M6x15L	SWRM	0.20	
60-4	122-130-14	O-Ring	1	G-95(3.1)	NBR	2.10	*
62	062-103-19	Bearing Cover	1	64x94x3.2	SS	5.90	
62-1	143-029-14	Cross Pan Screw	4	M5x12L	SWRM	0.10	
64	064-326-16	Motor Frame	1		FC	854.00	
68	068-185-13	Handle	1			119.70	
70	070-107-18	Cable Clamp	1		FC	4.40	
70-1	140-035-14	Hex. Bolt	2	M6x20L	SUS304	0.40	
70B	070-103-10	L Clamp	1		SPC	4.90	
71	071-126-32	Shaft Sleeve	1		SUS403	19.50	
95	095-131-18	Chain	1		SS	1.20	
	173-433-18	Packing O-Ring Set	1	(*)		29.30	

- Pricing in U.S. currency and subject to change without notice.
- Items with * come in Packing O-Ring Set.



PARTS PRICE LIST

KRS2-A4•KRS2-B3

IKR2B3 (A4)A

Control Number :		FLPA-IKR2B3A-02	Supercedes:		FLPA-IKR2B3A-01	(10/15/99)	
ITEM	PARTS NO.	DESCRIPTION	Q'TY	SIZE	MATERIAL	PRICE (\$)	NOTE
1	001-311-39	Cab-tyre Cable	1	AWG14 x49'	2PNCT.F	509.90	
6	006-126-14	Stuffing Box	1	No.2	FC	40.00	
6-1	140-055-10	Hex. Bolt	4	M8x25L	SUS304	0.80	
8	008-142-12	Rubber Boot	1		CR	12.10	
9A	009-126-13	Solderless Terminal	3	AWG16	Nylon	1.20	
9B	009-116-10	Solderless Terminal	1	R-2-4	CU	0.40	
9B-1	143-013-15	Cross Head Screw	1	M4x6L	SWRM	0.20	
9C	002-115-18	Heat Shrink Tube	1	NST-150	\$/3.2ft	13.30	
9D	002-116-19	Heat Shrink Tube	1	NST-120	\$/3.2ft	14.80	
10	010-120-18	Cable Clip	1	No.2-1	SPC	5.00	
10-1	140-032-11	Hex. Bolt	1	M6x15L	SUS304	0.30	
10-2	141-004-33	Hex. Nut	1	M6	SUS304	0.20	
10-5	010-124-15	Clip Rubber	1	No.1	NBR	1.20	
11	011-110-11	Shackle	1		SS	2.20	
20	020-379-18	Pump Casing	1		FC20	371.20	
20-1	140-099-16	Hex. Bolt	4	M12x40L	SUS304	2.50	
20-4	122-310-10	O-Ring	1	200x3.5	NBR		*
20-5	121-128-16	Packing	1		NBR		*
21	021-535-33	Impeller	1	60Hz (B3)	FCD	224.70	
21	021-537-35	Impeller	1	60Hz (A4)	FCD	224.70	
21-2	157-006-18	Hex. Cap Nut	1	M24	S35C	8.10	
21-3	142-170-21	Spring Washer	1	M24	SPC	1.40	
22	022-368-23	Suction Cover	1	60HZ (A4)	FCD	76.70	
22	022-366-21	Suction Cover	1	60Ha (B3)	FCD	76.70	
22-3	142-145-27	Plain Washer	6	M12	SPC	0.20	
22-5	120-129-14	Packing	1	230x287	Poly.Sheet	3.80	
22-11	140-096-13	Hex. Bolt	3	M12x25L	SUS304	2.10	
22-12	144-121-23	Stud Bolt	3	M12x86L(T)	SUS403	11.20	
23	023-212-11	Strainer	1		SPC	35.50	
25	025-194-12	Mechanical Seal	1	H-30	SIC	315.20	
26	026-109-39	Oil Seal	1	DD-355511	NBR	5.80	
30	030-110-23	Oil Ring	1		SPC	5.30	
30-1	143-070-10	Cross Pan Screw	2	M5x6L	SWRM	0.10	
32	032-162-13	Hose Coupling	1	NPT-4"	FC	95.90	
32	032-161-12	Hose Coupling	1	NPT-3"	FC	83.50	
32-1	140-076-46	Hex. Bolt	4	M10x30L	SUS410	1.60	
32-4	122-132-16	O-Ring	1	G-105(3.1)	NBR	2.10	*
35	035-113-18	Oil Plug	1	M12x14L	SUS304	3.60	
35-4	121-247-12	Packing	1	11.8x18x2t	Poly.Sheet	0.60	*
40	040-109-20	Impeller Shim	1	27.5x52x0.3t	SUS304	1.50	
47	047-106-15	Impeller Prot. Cover	1	No.5	SPC	4.40	
49	049-134-18	Bottom Plate	1		SPC	41.10	
49-2	141-007-10	Hex. Nut	3	M12	SUS304	1.30	
50	050-362-11	Motor Bracket	1		FC	605.30	
50-1	140-081-15	Hex. Bolt	4	M10x50L	SUS304	2.50	
50-4	122-285-15	O-Ring	1	155x3.1	NBR		*
50-5	121-302-16	Packing	1		NBR		*
50-31	142-164-19	Spring Washer	4	M10	SUS304	0.30	
50-32	142-128-24	Plain Washer	1	M10	SPC	0.20	
52A	052-108-13	Ball Bearing	1	#6305ZZC3		14.50	
52A-3	142-197-11	Wave Washer	1	#6305	SK-5	2.40	
52B	052-110-18	Ball Bearing	1	#6307ZZC3		24.30	
52B-6	146-022-16	Stop Ring	1	C-35	SK-5	2.70	
53	053-271-11	Motor Protector	1	KA313GCXL103	440V	115.00	
53	053-241-12	Motor Protector	1	KA313GGXL110	220V	121.70	
53-1	143-126-12	Cross Pan Screw	2	M4x12L	SWRM	0.30	
53-31	142-160-31	Spring Washer	2	M4	SWRH	0.20	
53-32	142-124-20	Plain Washer	2	M4	SPC	0.20	
54-8	147-019-13	Impeller Key	1	7x7x32L	SUS420	14.90	
55	055-561-17	Rotor and Shaft	1			621.20	
56	056-489-13	Motor Stator	1		220V	729.60	
58	058-161-12	L.Wire Prot. Plate	1			20.70	
60	060-271-13	Bearing Housing	1		FC	224.70	
60-1	140-054-48	Hex. Bolt	4	M8x20L	SWRM	0.30	
60-4	122-134-18	O-Ring	1	G-115(3.1)	NBR	2.90	*
62	062-101-17	Bearing Cover	1		SPC	16.60	
62-1	143-042-13	Cross Pan Screw	3	M6x10L	SWRM	0.10	
64	064-442-19	Motor Frame	1		FC	980.40	
68	068-185-13	Handle	1			119.70	
70	070-107-18	Cable Clamp	1		FC	4.40	

PARTS PRICE LIST

KRS2-A4•KRS2-B3

IKR2B3(A4)A

Control Number :		Supercedes:		PLPA-IKR2B3A-01		(10/15/99)	
ITEM	PARTS NO.	DESCRIPTION	QTY	SIZE	MATERIAL	PRICE (\$)	NOTE
70-1	140-035-14	Hex. Bolt	2	M6x20L	SUS304	0.40	
70B	070-103-10	L Clamp	1		SPC	4.90	
71	071-127-33	Shaft Sleeve	1		SUS403	21.50	
95	095-131-18	Chain	1		SS	1.20	
	173-434-19	Packing O-Ring Set	1	(*)		30.80	

- Pricing in U.S. currency and subject to change without notice.
- Items with * come in Packing O-Ring Set.



EXPLODED VIEW

Control Number :

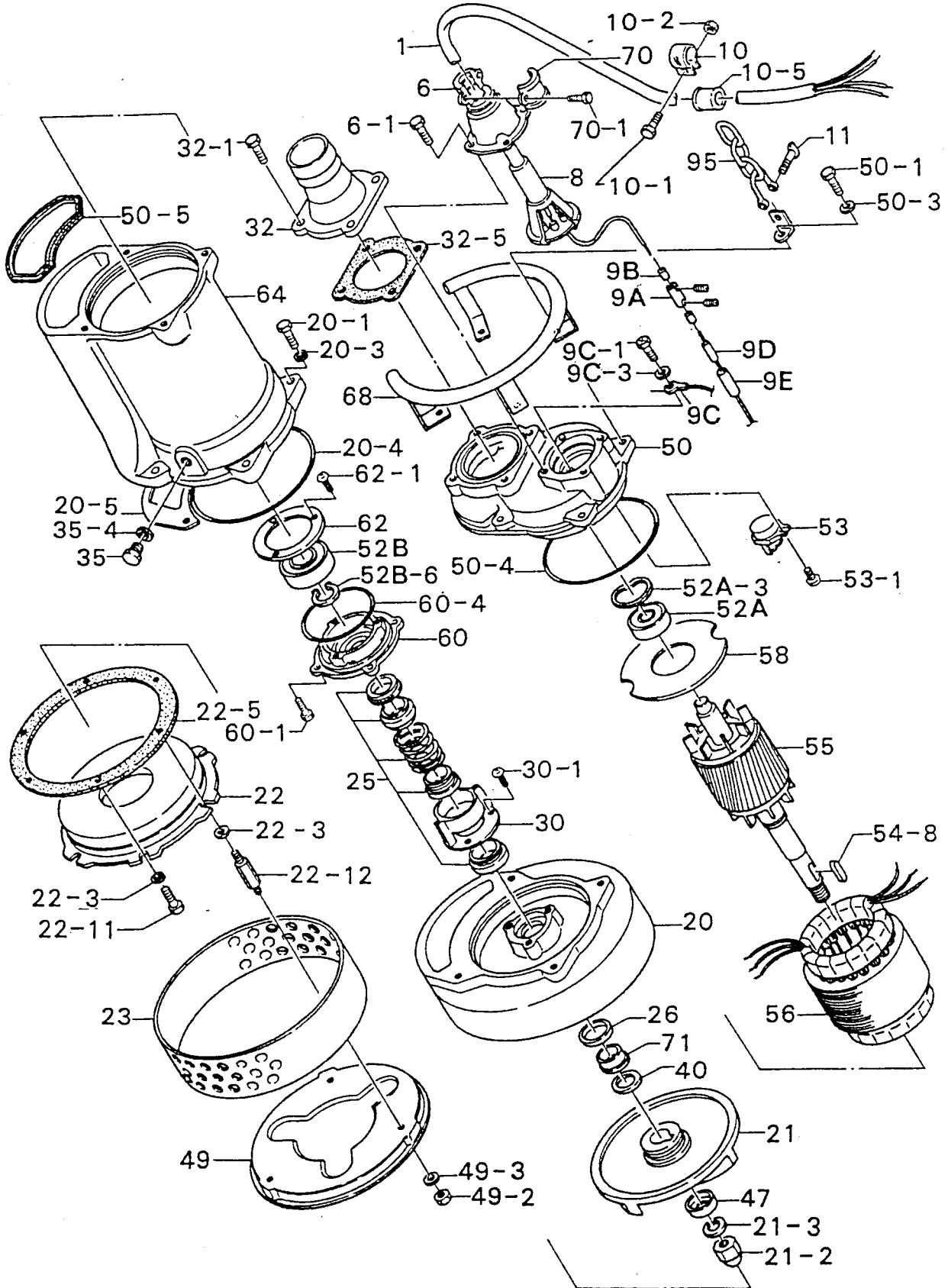
DREV-IKR2B4A-01

Model : KRS2-B4

Supersedes :

Submersible Dewatering Pump (Heavy Duty)

04-01-96



PARTS PRICE LIST

KRS2-B4

IKR2B4A

Control Number :		PLPA-IKR2B4A-02	Supercedes:		PLPA-IKR2B4A-01	(10/15/99)	
ITEM	PARTS NO.	DESCRIPTION	Q'TY	SIZE	MATERIAL	PRICE (\$)	NOTE
1	001-312-30	Cab-tyre Cable	1	AWG12 X 49ft	2PNCT.F	636.40	
6	006-126-14	Stuffing Box	1	No.2	FC	40.00	
6-1	140-055-10	Hex. Bolt	4	M8x25L	SUS304	0.80	
8	008-143-13	Rubber Boot	1		CR	12.10	
9A	009-101-12	Terminal	3		BIBM2	4.70	
9B	009-123-10	Solderless Terminal	6	P-5.5	CU	0.40	
9C	009-122-19	Solderless Terminal	1	R-3.5	CU	0.40	
9C-1	143-013-15	Cross Head Screw	1	M4x6L	SWRM	0.20	
9D	002-115-18	Heat Shrink Tube	1	NST-150	\$/3.2ft	13.30	
9E	002-116-19	Heat Shrink Tube	1	NST-120	\$/3.2ft	14.80	
10	010-120-18	Cable Clip	1	No.2-1	SPC	5.00	
10-1	140-032-11	Hex. Bolt	1	M6x15L	SUS304	0.30	
10-2	141-004-33	Hex. Nut	1	M6	SUS304	0.20	
10-5	010-121-19	Clip Rubber	1	No.1	NBR	1.20	
11	011-110-11	Shackle	1	5	SS	2.20	
20	020-379-18	Pump Casing	1	60Hz (B4)	FC	371.20	
20-1	140-099-16	Hex. Bolt	4	M12x40L	SUS304	2.50	
20-4	122-310-10	O-Ring	1	200x3.5	NBR	*	
20-5	121-128-16	Packing	1		NBR	*	
21	021-539-37	Impeller	1	60Hz (B4)	FCD	309.30	
21-2	157-006-18	Hex. Cap Nut	1	M24 (P3)	S35C	8.10	
21-3	142-170-21	Spring Washer	1	M24	SPC	1.40	
22	022-369-24	Suction Cover	1	60Hz (B4)	FC	76.70	
22-3	142-129-25	Plain Washer	6	M12	SPC	0.20	
22-5	120-129-14	Packing	1	60Hz (B4)	Poly.Sheet	3.80	
22-11	140-096-13	Hex. Bolt	3	M12x25L	SUS304	2.10	
22-12	144-121-23	Stud Bolt	3	M12x86L	SUS403	11.20	
23	023-212-11	Strainer	1	60Hz (B4)	SPC	35.50	
25	025-194-12	Mechanical Seal	1	H-30	SIC	315.20	
26	026-109-39	Oil Seal	1	DD-355511	NBR	5.80	
30	030-110-23	Oil Ring	1		SPC	5.30	
30-1	143-070-10	Cross Pan Screw	3	M5x6L	SWRM	0.10	
32	032-162-13	Hose Coupling	1	NPT-4"	FC	95.90	
32-1	140-076-46	Hex. Bolt	4	M10x30L	SUS410	1.60	
32-4	122-132-16	O-Ring	1	G-105(3.1)	NBR	2.10	*
35	035-113-18	Oil Plug	1	M12x14L	SUS304	3.60	
35-5	121-247-12	Packing	1	11.8x18x2t	Poly.Sheet	0.60	*
40	040-109-20	Impeller Shim	1	27.5X52X0.3t	SUS304	1.50	
47	047-106-15	Impeller Prot. Cover	1	No.5	SPC	4.40	
49	049-134-18	Bottom Plate	1	60Hz (B4)	SPC	41.10	
49-2	141-007-10	Hex. Nut	3	M12	SUS304	1.30	
50	050-363-12	Motor Bracket	1		FC	605.30	
50-1	140-081-15	Hex. Bolt	4	M10x50L	SUS304	2.50	
50-4	122-410-11	O-Ring	1	190x3.8	NBR	*	
50-5	121-409-14	Packing	1		NBR	*	
50-31	142-164-19	Spring Washer	4	M10	SUS304	0.30	
50-32	142-128-24	Plain Washer	1	M10	SPC	0.20	
52A	052-108-13	Ball Bearing	1	#6305ZC3		14.50	
52A-3	142-197-11	Wave Washer	1	#6305	SK-5	2.40	
52B	052-111-19	Ball Bearing	1	#6308ZC3		34.90	
52B-6	146-025-19	Stop Ring	1	C-40	SK-5	5.60	
53	053-196-11	Motor Protector	1	KA314-HLXL00	(B.C)220V	272.30	
53	053-222-17	Motor Protector	1	KA314-HRXL202	(B.C)440V	157.90	
53-1	143-016-18	Cross Pan Screw	2	M4x12L	SWRM	0.10	
53-31	142-160-31	Spring Washer	2	M4	SWRH	0.20	
53-32	142-124-20	Plain Washer	2	M4	SPC	0.20	
54-8	147-019-13	Impeller Key	1	7x7x32L	SUS420	14.90	
55	055-562-18	Rotor and Shaft	1			736.90	
56	056-490-17	Motor Stator	1		220V	898.40	
58	058-155-13	L.Wire Prot. Plate	1		Baklite	20.70	
60	060-272-14	Bearing Housing	1			239.80	
60-1	140-054-48	Hex. Bolt	4	M8x20L	SWRM	0.30	
60-4	122-134-18	O-Ring	1	G-115(3.1)	NBR	2.90	*
62	062-116-15	Bearing Cover/Clutch	1		SPC	8.00	
62-1	143-042-13	Cross Pan Screw	3	M6x10L	SWRM	0.10	
64	064-443-10	Motor Frame	1		FC	1097.70	
68	068-235-19	Handle	1			119.70	
70	070-107-18	Cable Clamp	1		FC	4.40	
70-1	140-035-14	Hex. Bolt	2	M6x20L	SUS304	0.40	
70B	070-103-10	L Clamp	1		SPC	4.90	

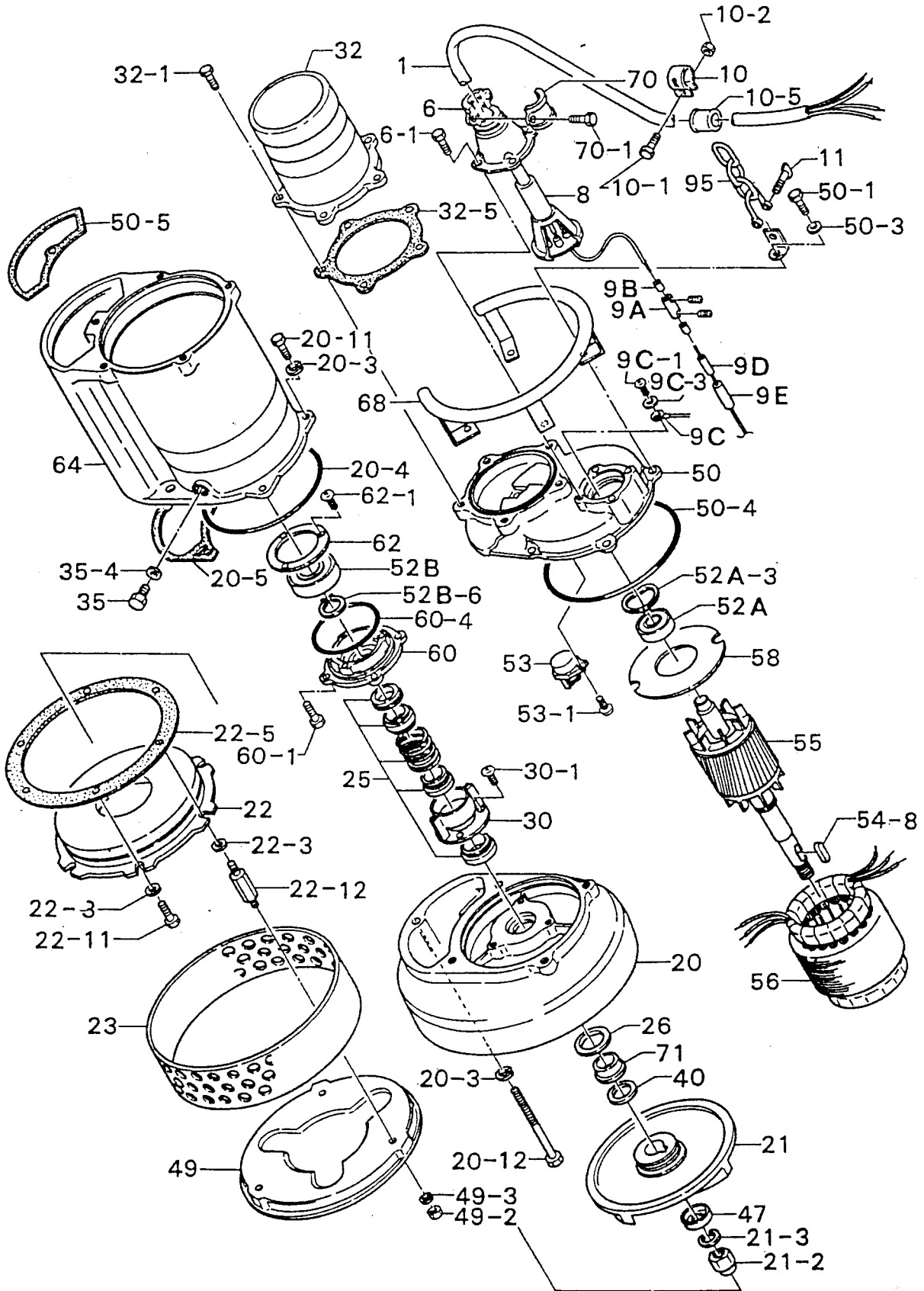
PARTS PRICE LIST

KRS2-B4

IKR2B4A

Control Number :		PLPA-IKR2B4A-02		Supercedes:		PLPA-IKR2B4A-01		(10/15/99)	
ITEM	PARTS NO.	DESCRIPTION	Q'TY	SIZE	MATERIAL	PRICE (\$)	NOTE		
71	071-127-33	Shaft Sleeve	1		SUS403	21.50			
95	095-131-18	Chain	1	4	SS	1.20			
	173-435-10	Packing O-Ring Set	1	(*)		51.80			

- Pricing in U.S. currency and subject to change without notice.
- Items with * come in Packing O-Ring Set.



PARTS PRICE LIST

KRS2-A6

IKR2A6A

Control Number :		PLPA-IKR2A6A-02	Supercedes:	PLPA-IKR2A6A-01		(10/15/99)	
ITEM	PARTS NO.	DESCRIPTION	Q'TY	SIZE	MATERIAL	PRICE (\$)	NOTE
1	001-313-31	Cab-tyre Cable	1	AWG10 x 49ft	2PNCT.F	760.70	
6	006-126-14	Stuffing Box	1	No.2	FC	40.00	
6-1	140-055-10	Hex. Bolt	4	M8x25L	SUS304	0.80	
8	008-139-16	Rubber Boot	1	No.2	CR	12.10	
9A	009-101-12	Terminal	3		BSBM2	4.70	
9B	009-123-10	Solderless Terminal	6	P-5.5	CU	0.40	
9C	009-130-10	Solderless Terminal	1	R-5.5-4		0.60	
9C-1	143-013-15	Cross Pan Screw	1	M4x6L	SWRM	0.20	
9C-3	142-160-31	Spring Washer	1	M4	SWRH	0.20	
9D	002-115-18	Heat Shrink Tube	1	NST-150	\$/3.2ft	13.30	
9E	002-116-19	Heat Shrink Tube	1	NST-120	\$/3.2ft	14.80	
10	010-120-18	Cable Clip	1	No.2-1	SPC	5.00	
10-1	140-032-11	Hex. Bolt	1	M6x15L	SUS304	0.30	
10-2	141-004-33	Hex. Nut	1	M6	SUS304	0.20	
10-5	010-122-10	Clip Rubber	1	No.2	NBR	1.20	
11	011-110-11	Shackle	1	6MM	SS	2.20	
20	020-380-12	Pump Casing	1		FC	440.40	
20-3	142-165-10	Spring Washer	1	M12	SUS304	0.50	
20-4	122-311-11	O-Ring	1	220x3.5	NBR	4.30	*
20-5	121-129-17	Packing	1		NBR	9.50	*
20-11	140-100-11	Hex. Bolt	4	M12x45L	SUS304	2.80	
20-12	140-113-17	Hex. Bolt	1	M12x120L	SUS304	6.20	
21	021-541-32	Impeller	1	60Hz (A6)	FCD	318.20	
21-2	157-010-15	Hex. Cap Nut	1	M30 (P3.5)	S35C	13.00	
21-3	142-171-35	Spring Washer	1	M30	SWRH	3.00	
22	022-378-26	Suction Cover	1		FC	93.50	
22-3	142-129-25	Plain Washer	6	M12	SPC	0.20	
22-5	120-112-14	Packing	1	260x314	Poly.Sheet	3.80	
22-11	140-097-14	Hex. Bolt	3	M12x30L	SUS304	2.40	
22-12	144-122-24	Stud Bolt	3	M12x107L	SUS403	12.40	
23	023-113-11	Strainer	1		SPC	39.20	
25	025-195-13	Mechanical Seal	1	H-35	SIC	367.00	
26	026-123-26	Oil Seal	1	DD406211	NBR	7.40	
30	030-110-23	Oil Ring	1		SPC	5.30	
30-1	143-070-10	Cross Pan Screw	3	M5x6L	SWRM	0.10	
32	032-254-13	Hose Coupling	1	NPT-6"	FC	163.40	
32-1	140-076-46	Hex. Bolt	5	M10x30L	SUS410	1.60	
32-4	122-285-15	O-Ring	1	155x3.1	NBR		*
35	035-113-18	Oil Plug	1	M12x14L	SUS304	3.60	
35-4	121-247-12	Packing	1	11.8x18x2t	Poly.Sheet	0.60	*
40	040-110-24	Impeller Shim	1	32.5X58X0.3t	SUS304	1.50	
47	047-107-16	Impeller Prot. Cover	1	No.6	SPC	5.80	
49	049-115-26	Bottom Plate	1		SPC	44.80	
49-2	141-007-10	Hex. Nut	3	M12	SUS304	1.30	
50	050-364-13	Motor Bracket	1		FC	558.00	
50-3	142-165-10	Spring Washer	5	M12	SUS304	0.50	
50-4	122-250-11	O-ring	1	230x3.8	NBR	3.50	*
50-5	121-304-18	Packing	1		NBR	11.90	*
50-11	140-100-11	Hex. Bolt	1	M12x45L	SUS304	2.80	
50-12	140-101-12	Hex. Bolt	4	M12x50L	SUS304	3.00	
50-31	142-165-10	Spring Washer	1	M12	SUS304	0.50	
50-32	142-165-10	Spring Washer	4	M12	SUS304	0.50	
52A	052-109-14	Ball Bearing	1	#6306ZC3		17.90	
52A-3	142-198-12	Wave Washer	1	#6306	SK-5	2.40	
52B	052-112-10	Ball Bearing	1	#6309ZC3		44.50	
52B-6	146-027-11	Stop Ring	1	C-45	SK-5	5.60	
53	053-307-17	Motor Protector	1	KA314HLFQ00	(B.C)220V	176.10	
53	053-241-12	Motor Protector	1	KA313GGXL110	(B.C)440V	121.70	
53-1	143-016-18	Cross Pan Screw	2	M4x12L	SWRM	0.10	
53-31	142-160-31	Spring Washer	2	M4	SWRH	0.20	
53-32	142-124-20	Plain Washer	2	M4	SPC	0.20	
54-8	147-021-18	Impeller Key	1	8x8x44L	SUS420	11.80	
55	055-563-19	Rotor and Shaft	1			738.70	
56	056-491-18	Motor Stator	1	220V		965.00	
58	058-120-19	L.Wire Prot. Plate	1	94X220X1.6t	Resin	11.10	
60	060-221-18	Bearing Housing	1		FC	260.30	
60-1	140-054-48	Hex. Bolt	4	M8x20L	SWRM	0.30	
60-4	122-140-17	O-Ring	1	G-145(3.1)	NBR		*
62	062-102-18	Bearing Cover	1	85X125X3.2	SS	16.70	
62-1	140-029-28	Hex. Bolt	3	M6X10L	SWRM	0.10	
64	064-451-11	Motor Frame	1		FC	612.70	
68	068-159-18	Handle	1			142.20	
68-5	165-017-17	Rubber Cap	2		NBR	4.40	
70	070-107-18	Cable Clamp	1		FC	4.40	
70-1	140-035-14	Hex. Bolt	2	M6x20L	SUS304	0.40	
70B	070-103-10	L Clamp	1		SPC	4.90	
71	071-128-34	Shaft Sleeve	1		SUS403	25.30	

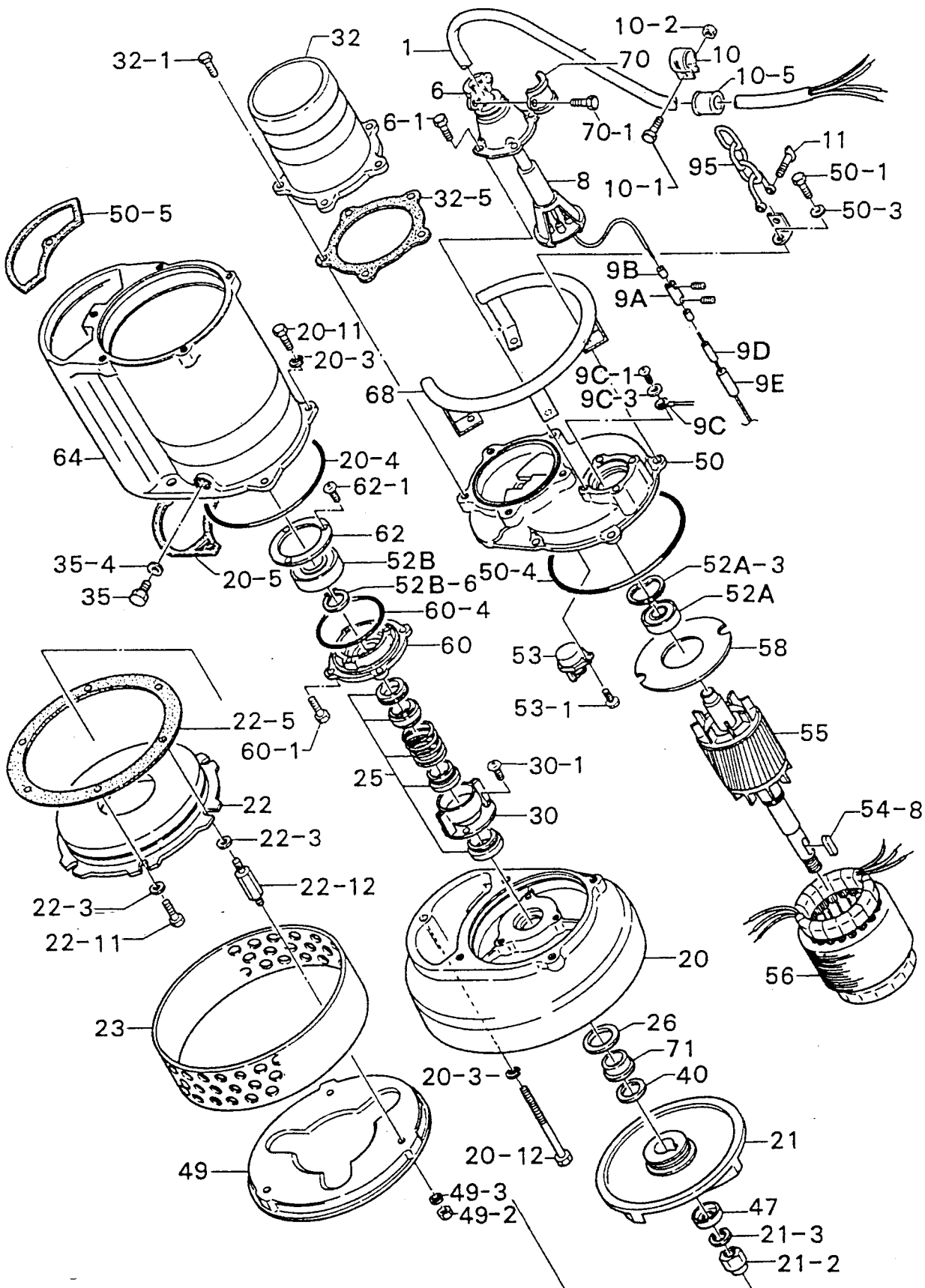
PARTS PRICE LIST

KRS2-A6

IKR2A6A

Control Number :		PLPA-IKR2A6A-02		Supercedes:		PLPA-IKR2A6A-01		(10/15/99)	
ITEM	PARTS NO.	DESCRIPTION	Q'TY	SIZE	MATERIAL	PRICE (\$)	NOTE		
95	095-131-18	Chain	1	4	SS	1.20			
	173-436-11	Packing O-Ring Set	1	(*)		34.00			

- Pricing in U.S. currency and subject to change without notice.
- Items with * come in Packing O-Ring Set.



PARTS PRICE LIST

KRS2-B6

IKR2B6A

Control Number :		PLPA-IKR2B6A-02	Supercedes:		PLPA-IKR2B6A-01	(10/15/99)	
ITEM	PARTS NO.	DESCRIPTION	QTY	SIZE	MATERIAL	PRICE (\$)	NOTE
1	001-314-32	Cab-tyre Cable	1	AWG8 x 49'	2PNCT.F	1,069.30	
6	006-127-15	Stuffing Box	1	No.3	FC	42.90	
6-1	140-055-10	Hex. Bolt	4	M8x25L	SUS304	0.80	
8	008-147-17	Rubber Boot	1		CR	11.80	
9A	009-101-12	Terminal	3		BSBM2	4.70	
9B	009-129-16	Solderless Terminal	6		CU	0.40	
9C	009-106-17	Solderless Terminal	1	R-8-6	CU	0.80	
9C-1	143-041-12	Cross Pan Screw	1	M6x8L	SWRM	0.10	
9C-3	142-162-33	Spring Washer	1	M6	SPC	0.20	
9D	002-115-18	Heat Shrink Tube	1	NST-150	\$3.2ft	13.30	
9E	002-116-19	Heat Shrink Tube	1	NST-120	\$3.2ft	14.80	
10	010-120-18	Cable Clip	1	No.2-1	SPC	5.00	
10-1	140-032-11	Hex. Bolt	1	M6x15L	SUS304	0.30	
10-2	141-004-33	Hex. Nut	1	M6	SUS304	0.20	
10-5	010-122-10	Clip Rubber	1	No.2	NBR	1.20	
11	011-110-11	Shackle	1	5	SS	2.20	
20	020-380-12	Pump Casing	1	60Hz (B6)	FC	440.40	
20-3	142-165-10	Spring Washer	1	M12	SUS304	0.50	
20-4	122-311-11	O-Ring	1	220x3.5	NBR	4.30	*
20-5	121-129-17	Packing	1		NBR	9.50	*
20-11	140-100-11	Hex. Bolt	4	M12x45L	SUS304	2.80	
20-12	140-113-17	Hex. Bolt	1	M12x120L	SUS304	6.20	
21	021-543-34	Impeller	1	60Hz (B6)	FCD	347.20	
21-2	157-010-15	Hex. Cap Nut	1	M30 (P3.5)	S35C	13.00	
21-3	142-171-35	Spring Washer	1	M30	SPC	3.00	
22	022-379-27	Suction Cover	1	60Hz (B6)	FC	112.30	
22-3	142-129-25	Plain Washer	6	M12	SPC	0.20	
22-5	120-112-14	Packing	1	60Hz (B6)	Poly.Sheet	3.80	
22-11	140-097-14	Hex. Bolt	3	M12x30L	SUS304	2.40	
22-12	144-122-24	Stud Bolt	3	M12x107L	SUS403	12.40	
23	023-113-11	Strainer	1		SPC	39.20	
25	025-195-13	Mechanical Seal	1	H-35	SIC	367.00	
26	026-123-26	Oil Seal	1	DD-406211	NBR	7.40	
30	030-110-23	Oil Ring	1		SPC	5.30	
30-1	143-070-10	Cross Pan Screw	3	M5x6L	SWRM	0.10	
32	032-254-13	Hose Coupling	1	NPT-6"	FC	163.40	
32-1	140-076-46	Hex. Bolt	5	M10x30L	SUS410	1.60	
32-4	122-285-15	O-Ring	1	155x3.1	NBR		*
35	035-113-18	Oil Plug	1	M12x14L	SUS304	3.60	
35-4	121-247-12	Packing	1	11.8x18x2t	Poly.Sheet	0.60	*
40	040-110-24	Impeller Shim	1	32.5X58X0.3t	SUS304	1.50	
47	047-107-16	Impeller Prot. Cover	1	No.6	SPC	5.80	
49	049-115-26	Bottom Plate	1	60Hz (B6)	SPC	44.80	
49-2	141-007-10	Hex. Nut	3	M12	SUS304	1.30	
50	050-365-14	Motor Bracket	1		FC	606.80	
50-3	142-165-10	Spring Washer	5	M12	SUS304	0.50	
50-4	122-250-11	O-Ring	1	230x3.8	NBR	3.50	*
50-5	121-304-18	Packing	1		NBR	11.90	*
50-11	140-100-11	Hex. Bolt	1	M12x45L	SUS304	2.80	
50-12	140-104-15	Hex. Bolt	4	M12x65L	SUS304	3.60	
50-31	142-165-10	Spring Washer	1	M12	SUS304	0.50	
50-32	142-165-10	Spring Washer	4	M12	SUS304	0.50	
52A	052-110-18	Ball Bearing	1	#6307ZZC3		24.30	
52A-3	142-199-13	Wave Washer	1	#6307	SK-5	2.70	
52B	052-113-11	Ball Bearing	1	#6310ZZC3		52.40	
52B-6	146-029-13	Stop Ring	1	C-50	SK-5	3.80	
53	053-317-10	Motor Protector	1	KA315-JTAL00	(B.C)220V	414.40	
53	053-196-11	Motor Protector	1	KA314-HLXL00	(B.C)440V	272.30	
53-1	143-017-19	Cross Pan Screw	2	M4x14L	SWRM	0.10	
53-31	142-160-31	Spring Washer	2	M4	SWRH	0.20	
53-32	142-124-20	Plain Washer	2	M4	SPC	0.20	
54-8	147-021-18	Impeller Key	1	8x8x44L	SUS420	11.80	
55	055-564-10	Rotor and Shaft	1			805.00	
56	056-492-19	Motor Stator	1		220V	1,048.40	
58	058-147-12	L.Wire Prot. Plate	1	100x204x1.6t	Resin	11.10	
60	060-222-19	Bearing Housing	1		FC	292.70	
60-1	140-054-48	Hex. Bolt	4	M8x20L	SWRM	0.30	
60-4	122-140-17	O-Ring	1	G-145(3.1)	NBR		*
61	061-142-17	Slinger	1	50x70x3t	SPC	32.70	
62	062-158-19	Bearing Cover	1		SPC	11.50	
62-1	140-029-28	Hex. Bolt	3	M6x10L	SWRM	0.10	
64	064-450-10	Motor Frame	1		FC	1,228.40	
68	068-160-12	Handle	1			83.90	
68-5	165-017-17	Rubber Cap	2		NBR	4.40	
70	070-107-18	Cable Clamp	1		FC	4.40	
70-1	140-035-14	Hex. Bolt	2	M6x20L	SUS304	0.40	
70B	070-103-10	L Clamp	1		SPC	4.90	

PARTS PRICE LIST

KRS2-B6

IKR2B6A

Control Number :		PLPA-IKR2B6A-02		Supercedes:		PLPA-IKR2B6A-01		(10/15/99)	
ITEM	PARTS NO.	DESCRIPTION	Q'TY	SIZE	MATERIAL	PRICE (\$)	NOTE		
71	071-128-34	Shaft Sleeve	1		SUS403	25.30			
95	095-131-18	Chain	1	mm Ring	SS	1.20			
	173-436-11	Packing O-Ring Set	1	(*)		34.00			

- Pricing in U.S. currency and subject to change without notice.
- Items with * come in Packing O-Ring Set.



EXPLOADED VIEW

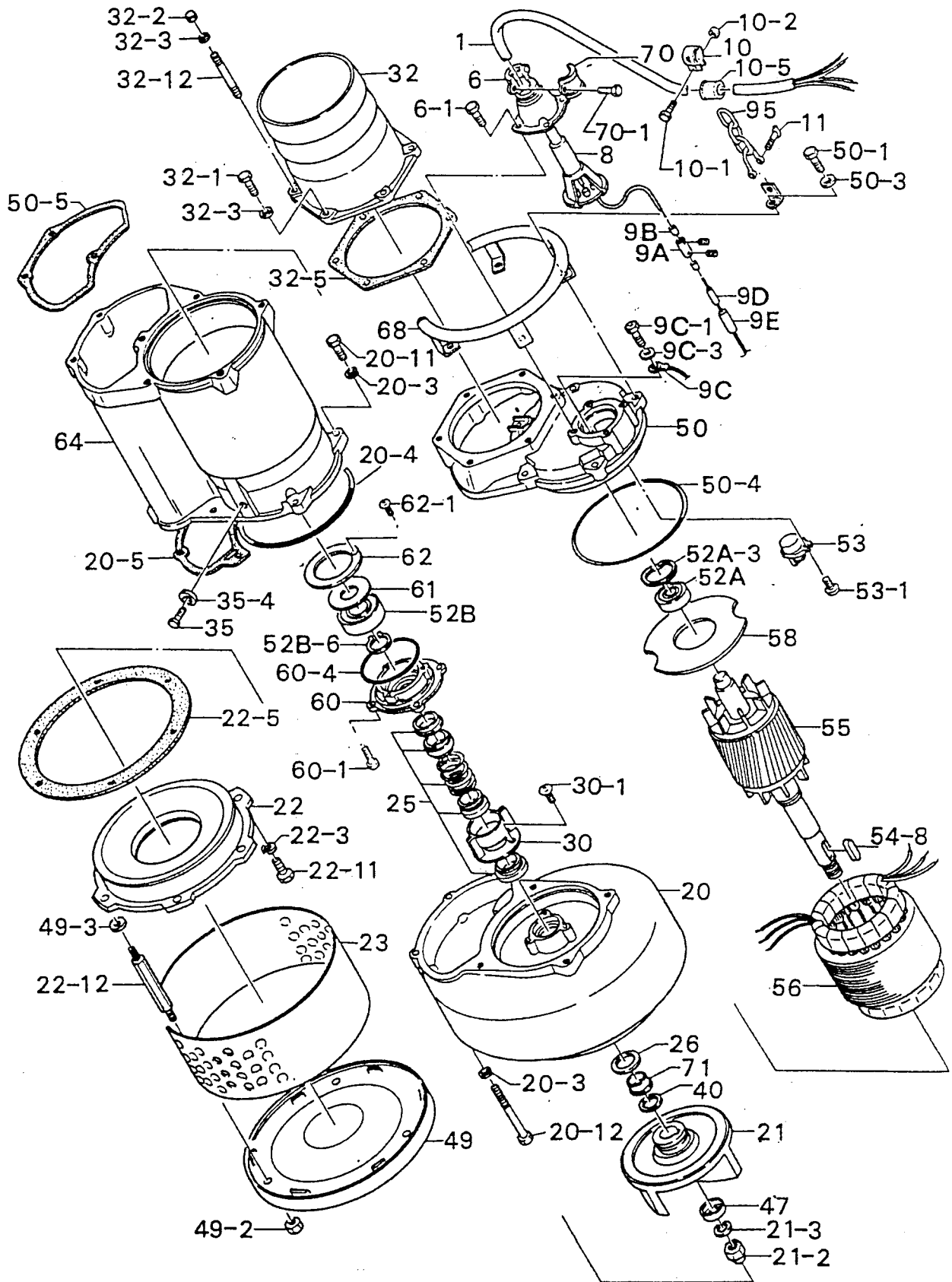
Control Number :
DREV-IKR28S6-01

Model : KRS2-8S

Supersedes :

Submersible Dewatering Pump (Heavy Duty)

04-01-96



PARTS PRICE LIST

KRS2-8S

IKR28S6

Control Number :		Supercedes:		PLPA-IKR28S6-01		(10/15/99)	
ITEM	PARTS NO.	DESCRIPTION	Q'TY	SIZE	MATERIAL	PRICE (\$)	NOTE
1	001-314-32	Cab-tyre Cable	1	AWG8 x 49'	2PNCT.F	1,069.30	
6	006-127-15	Stuffing Box	2	No.3	FC	42.90	
6-1	140-055-10	Hex. Bolt	4	M8x25L	SUS304	0.80	
8	008-147-17	Rubber Boot	1		CR	11.80	
9A	009-101-12	Terminal	3		BIBM2	4.70	
9B	009-129-16	Solderless Terminal	6			0.40	
9C	009-106-17	Solderless Terminal	1	R-8-6		0.80	
9C-1	143-041-12	Cross Pan Screw	1	M6x8L	SWRM	0.10	
9C-3	142-162-33	Spring Washer	1	M6	SPC	0.20	
9D	002-115-18	Heat Shrink Tube	1	NST-150	\$/3.2ft	13.30	
9E	002-116-19	Heat Shrink Tube	1	NST-120	\$/3.2ft	14.80	
10	010-120-18	Cable Clip	1	No.2-1	SPC	5.00	
10-1	140-032-11	Hex. Bolt	1	M6x15L	SUS304	0.30	
10-2	141-004-33	Hex. Nut	1	M6	SUS304	0.20	
10-5	010-122-10	Clip Rubber	1	No.2	NBR	1.20	
11	011-110-11	Shackle	1	5	SS	2.20	
20	020-478-18	Pump Casing	1		FC	802.80	
20-3	142-165-10	Spring Washer	6	M12	SUS304	0.50	
20-4	122-311-11	O-Ring	1	220x3.5	NBR	4.30	*
20-5	121-130-11	Packing	1		NBR		*
20-11	140-100-11	Hex. Bolt	4	M12x45L	SUS304	2.80	
20-12	140-113-17	Hex. Bolt	2	M12x120L	SUS304	6.20	
21	021-427-15	Impeller	1	60Hz	FCD	347.20	
21-2	157-010-15	Hex. Cap Nut	1	M30 (P3.5)	S35C	13.00	
21-3	142-171-35	Spring Washer	1	M30	SPC	3.00	
22	022-469-38	Suction Cover	1		FC	187.20	
22-5	120-105-14	Packing	1	291x348x0.5t	Poly.Sheet	3.80	
22-11	140-097-14	Hex. Bolt	3	M12x30L	SUS304	2.40	
22-12	144-153-24	Stud Bolt	3	M12x142L	SUS403	16.00	
22-31	142-165-10	Spring Washer	3	M12	SUS304	0.50	
22-32	142-129-25	Plain Washer	3	M12	SPC	0.20	
23	023-278-15	Strainer	1		SPC	48.50	
25	025-195-13	Mechanical Seal	1	H-35	SIC	367.00	
26	026-123-26	Oil Seal	1	DD-406211	NBR	7.40	
30	030-110-23	Oil Ring	1		SPC	5.30	
30-1	143-070-10	Cross Pan Screw	3	M5x6L	SWRM	0.10	
32	032-255-14	Hose Coupling	1	NPT-8"	FC	429.80	
32-5	121-144-18	Packing	1		NBR	7.60	*
32-11	140-098-15	Hex. Bolt	4	M12x35L	SUS304	2.40	
32-12	140-112-16	Hex. Bolt	2	M12x110L	SUS304	6.20	
35	035-113-18	Oil Plug	1	M12x14L	SUS304	3.60	
35-5	121-247-12	Packing	1	11.8x18x2t	Poly.Sheet	0.60	*
40	040-110-24	Impeller Shim	1	32.5x58x0.5t	SUS304	1.50	
47	047-107-16	Impeller Prot. Cover	1	No.6	SPC	5.80	
49	049-136-10	Bottom Plate	1		SPC	59.80	
49-2	141-007-10	Hex. Nut	3	M12	SUS304	1.30	
50	050-372-14	Motor Bracket	1		FC	867.30	
50-3	142-165-10	Spring Washer	5	M12	SUS304	0.50	
50-4	122-250-11	O-Ring	1	230x3.8	NBR	3.50	*
50-5	121-200-13	Packing	1		NBR		*
50-11	140-100-11	Hex. Bolt	1	M12 x 45L	SUS304	2.80	
50-12	140-101-12	Hex. Bolt	4	M12 x 50L	SUS304	3.00	
50-31	142-165-10	Spring Washer	4	M12	SUS304	0.50	
50-32	142-165-10	Spring Washer	1	M12	SUS304	0.50	
52A	052-110-18	Ball Bearing	1	#6307ZZC3		24.30	
52A-3	142-199-13	Wave Washer	1	#6307	SK-5	2.70	
52B	052-113-11	Ball Bearing	1	#6310ZZC3		52.40	
52B-6	146-029-13	Stop Ring	1	C-50	SK-5	3.80	
53	053-317-10	Motor Protector	1	KA315JTAL00	220V	414.40	
53	053-196-11	Motor Protector	1	KA314HLXL00	440V	272.30	
53-1	143-125-11	Cross Pan Screw	2	M4x14L	SWRM	0.20	
53-31	142-160-31	Spring Washer	2	M4	SWRH	0.20	
53-32	142-124-20	Plain Washer	2	M4	SPC	0.20	
54-8	147-021-18	Impeller Key	1	8x8x44L	SUS420	11.80	
55	055-564-10	Rotor and Shaft	1			805.00	
56	056-492-19	Motor Stator	1		220V	1,048.40	
58	058-120-19	L.Wire Prot. Plate	1	94x220x1.6t	Resin	11.10	
60	060-222-19	Bearing Housing	1		FC	292.70	
60-1	140-054-48	Hex. Bolt	4	M8x20L	SWRM	0.30	
60-4	122-140-17	O-Ring	1	G-145(3.1)	NBR		*
61	061-142-17	Slinger	1		SPC	32.70	
62	062-158-19	Bearing Cover	1		SPC	11.50	
62-1	140-029-28	Hex. Bolt	3	M6x10L	SWRM	0.10	
64	064-449-16	Motor Frame	1		FC	1,553.90	
68	068-159-18	Handle	1			142.20	
68-5	165-017-17	Rubber Cap	2		NBR	4.40	
70	070-107-18	Cable Clamp	1		FC	4.90	

PARTS PRICE LIST

KRS2-8S

IKR28S6

Control Number :		PLPA-IKR28S6-02		Supercedes:		PLPA-IKR28S6-01		(10/15/99)
ITEM	PARTS NO.	DESCRIPTION	Q'TY	SIZE	MATERIAL	PRICE (\$)	NOTE	
70-1	140-035-14	Hex. Bolt	2	M6x20L	SUS304	0.40		
70B	070-103-10	L Clamp	1		SPC	4.90		
71	071-128-34	Shaft Sleeve	1		SUS403	25.30		
95	095-131-18	Chain	1	4mm Rink	SS	1.20		
	173-437-12	Packing O-Ring Set	1	(*)		45.30		

- Pricing in U.S. currency and subject to change without notice.
- Items with * come in Packing O-Ring Set.